

ESSEX SOCIETY FOR ARCHAEOLOGY AND HISTORY

(Founded as the Essex Archaeological Society in 1852)



Digitisation Project

COLCHESTER MUSEUM REPORTS

**FOR THE YEARS ENDING
31 MARCH 1915
TO
31 MARCH 1918**

2015

**ESAH REF:
C0915918**

BOROUGH OF COLCHESTER.

**The Colchester Museum of Local
Antiquities.**

(Founded 1846).



(OBERSE OF BOROUGH SEAL, 15TH CENTURY.)

Report of the Museum & Muniment Committee

For the Year ended 31st March, 1915.

Price Twopence.

Frontispiece.



COLCHESTER CASTLE, NORMAN GATEWAY.

From a Photograph by the Curator.

Borough of



Colchester.

THE
Corporation Museum
OF
LOCAL ANTIQUITIES
(FOUNDED 1846).
REPORT
OF THE
Museum and Muniment Committee

FOR THE YEAR ENDED 31ST MARCH, 1915.

PRICE—TWO PENCE.

COLCHESTER:
BENHAM AND COMPANY, LIMITED,
1915.

Committee and Officers, 1914=15.

Committee :

ALDERMAN E. H. BARRITT, J.P., *Chairman.*

ALDERMAN W. G. BENHAM, J.P., *Deputy-Chairman.*

THE WORSHIPFUL THE MAYOR (COUNCILLOR W. COATS
HUTTON, J.P.).

ALDERMAN H. LAVER, J.P.

COUNCILLOR J. W. BARE.

COUNCILLOR A. M. JARMIN.

COUNCILLOR C. M. STANFORD.

*The following are not on the Council, but represent the
Essex Archaeological Society.*

THE REV. HAMILTON ASHWIN, LL.D.

THE REV. J. W. KENWORTHY.

Mr. PHILIP G. LAVER, F.S.A.

Honorary Curator :

ALDERMAN HENRY LAVER, J.P., F.S.A.

Curator :

ARTHUR G. WRIGHT,

Assistant :

THEOBALD SMITH,

The Corporation Museum.

To the Mayor and Council of the Borough of Colchester.

GENTLEMEN,

We beg to submit our Annual Report on the Corporation Museum for the year ended 31st March, 1915.

During the past year the number of visitors has reached the unprecedented total of 49,689.

This large increase is due to the number of troops quartered in Colchester and the opening of the Museum on Sunday afternoons for their benefit.

The first Sunday opening was on October 2nd, when over 2,000 soldiers viewed the collections; the last opening was on March 28th. During the six months the Museum was open on Sundays it was visited by 17,982 persons.

A large number of valuable and interesting additions have been made to the various collections and your Committee are again indebted to numerous donors. The gifts have also been supplemented by many purchases.

All these are recorded in the following lists, and several are illustrated from photographs taken specially for this Report by the Curator.

The collection of antiquities from Braintree formed by the Rev. J. W. Kenworthy, sometime Vicar of that town, and presented by him to the Colchester Corporation, has been arranged in a case specially provided, and presents a valuable illustration of the history of the place during Prehistoric and Roman times.

The recolouring and rearrangement of the Mediæval Wall Cases, in progress when the last Report was issued, have been completed and have much improved the appearance and utility of the collections.

A good deal of ordinary routine work has also been carried out, such as cleaning, restoring and mending specimens, numbering in oil paint, rearranging and labelling.

The Committee record with satisfaction that an Order establishing a Scheme for the future regulation of the Albert School premises as a Museum and Art Gallery has been made by the Board of Education, but no further steps will be taken until the premises cease to be used by the Military Authorities as a Recruiting Station.

In conclusion your Committee invite the members of the Council and general public to visit the Museum and inspect the past year's work and accessions, and they feel convinced the Council will appreciate the interest and activity displayed by the responsible officers of the department.

ERNEST H. BARRITT, *Chairman*

HENRY LAVER, *Hon. Curator.*

ARTHUR G. WRIGHT, *Curator.*

Visitors to the Museum, 1914-15.

			Days Open		Attendance, Sundays.		Total Attendance, Sundays included.
April	26	...	—	...	3765
May	26	...	—	...	2129
June	26	...	—	...	4082
July	27	...	—	...	3150
August	26	...	—	...	4562
September	26	...	—	...	3585
October	31	...	5196	...	8809
November	30	...	3585	...	5337
December	30	...	1758	...	3248
January	31	...	1765	...	3793
February	28	...	1906	...	3564
March	31	...	2052	...	3665
			—		—		—
<i>Total</i>	338	...	17,982	...	49,689

BANK HOLIDAY ATTENDANCES.

Easter Monday, 13th April	1130
Whit Monday, 1st June	1247
August Monday, 3rd August	606
26th December	74

*The total number of Visitors for the year ending March 31st, 1903, was 20,887; 1904, was 27,039; 1905, was 28,408; 1906, was 29,588; 1907, was 31,078; 1908, was 30,875; 1909, was 29,842; 1910, was 34,453; 1911, was 29,423; 1912, was 27,298; 1913, was 32,149; 1914, was 29,564.

The Colchester Museum

IS OPEN DAILY FROM

1st April to 30th September—10 a.m. till 5 p.m.
1st October to 31st March—10 a.m. till 4 p.m.

AND CLOSED ON

Sundays, Good Friday, and Christmas Day, and such other days as the Committee may order.

ADMISSION FREE.

It is urgently requested that any discovery of Archæological interest in the neighbourhood may be brought to the notice of either the Chairman, Honorary Curator or the Curator as early as possible.

The Curator will be pleased to give any information in his power and may be seen daily, Museum engagements permitting.

Postcards of many of the most important antiquities may be obtained in the Museum at One Penny each.

Curator ... ARTHUR G. WRIGHT.

List of Additions to the Museum

BY GIFT AND PURCHASE.

From 1st April, 1914, to 31st March, 1915.

All the objects were found in Colchester, unless otherwise stated.

STONE AND BRONZE AGES.

Polished Axe of flint with thick white patina, the sides slightly rounded by grinding, the cutting edge semi-circular in form. Traces of the original chipped surfaces remain. Length $7\frac{1}{4}$ ins. Found at East Bay, Colchester. Late Neolithic or Early Bronze Age. Purchased. 3009.14

See Evans, *Stone Implements of Great Britain*, Second Edition, pp. 98-99.

Fusiform Bead of Shale, covered with two thin gold plates meeting in the centre, ornamented by five groups of engraved parallel lines, encircling the bead and acting as a key to the plates. Length, $1\frac{7}{16}$ in.; greatest diameter, $1\frac{1}{16}$ in. Small bead of same type with portions of engraved gold covering remaining. Length, $\frac{8}{16}$ in.; greatest diameter, $\frac{6}{16}$ in. Four gold plates from two similar beads about the size of the perfect example. Bead of amber, disc-shaped, imperfect. Diameter, $1\frac{1}{16}$ in. Perforation, $\frac{4}{16}$ in. Thickness in centre, $\frac{3}{16}$ in. Small bead of similar type, diameter, $\frac{5}{16}$ in.; perforation, $\frac{2}{16}$ in. The amber has changed to a dark colour with much corroded surface and is very brittle. Found with a burial under an inverted urn, which was too much broken to be preserved, near Rochford, Essex. Bronze Age, between 1500 and 1100 B.C. Purchased.

3011.14

A gold bead of the Rochford type is preserved in the Museum at Devizes and is figured in the Catalogue of that Museum, page 36, figure 140. It is described as "formed by plating a core of shale or jet (?) with two thin gold cones meeting in the centre; there is a band of parallel engraved lines round the centre and a similar one round each end." The bead was found in a barrow at Normanton, Wilts, and forms part of the Stourhead Collection. It is also figured in Hoare's *History of Ancient Wilts*, 202, plate xxv.

Three fragments of the Cinerary Urn inverted over the burial with gold beads; of coarse, gritty paste with red brown exterior and grey black interior. Found near Rochford, Essex. Bronze Age. Purchased. 3011.14

Polished Axe of horn coloured flint, with slightly oblique cutting edge and ground flat on sides. Length, $4\frac{1}{2}$ ins. Found at Lexden. Late Neolithic or Early Bronze Age. Donor, Miss Hilda Martin. 3112.14

Two Picks, made from antlers of the Red Deer (*Cervus Elaphus*), found during the recent excavations in galleries of the Prehistoric Flint Mines at Grimes Graves, Weeting, Norfolk. Donors, The Prehistoric Society of East Anglia and Mrs. T. S. Hall. 3117.14

A full report of these excavations will be published by the Prehistoric Society of East Anglia in due course. See *Archæologia*, vol. 62, pp 101-124, "On the Use of the Deer-Horn Pick in the Mining Operations of the Ancients. By Horace W. Sandars, Esq., F.S.A."

Four Implements, tongue-shaped and ovate, of cherty flint. Length, $5\frac{3}{4}$ ins., $3\frac{1}{2}$ ins. and $4\frac{1}{2}$ ins. Found at Grays, Essex. Palæolithic. Purchased. 3208.15

Two Cores and polygonal flake of flint, found by donor at Wormingford. Neolithic. Donor, the Curator, Mr. A. G. Wright. 3195.15

Bronze Socketed Axe, with loop which is imperfect, the mouth square in section and moulded at top. The curved wings of the palstave are seen as a survival on the sides, indicating the origin of the Socketed Celt. Length, $3\frac{7}{8}$ ins. Found near Braintree. Late Bronze Age. Donor, the Rev. J. W. Kenworthy. 3200.15

See Evans, *Ancient Bronze Implements*, figure 110, for a similar example with wings found at High Roding, Essex.

Bronze Socketed Axe, with loop and triple moulding below the brim of the oval mouth. Length $2\frac{5}{8}$ ins. Found near Braintree. Late Bronze Age. Donor, the Rev. J. W. Kenworthy. 3200.15

These two Axes are included in the Kenworthy Collection of Braintree Antiquities.

EARLY IRON AGE (LATE-CELTIC).

Six fragments of Bronze and Iron Age pottery with thumb and tooled decoration. Found at Shoeburyness. Donor, Quarter-Master-Sergeant J. J. Gurnett. 3010.14

Upper and Lower Stones of British Querns of Hertfordshire Conglomerate (Pudding Stone). The upper stone has a hole in the side for the insertion of a handle. Found at Bocking. Early Iron Age. Purchased. 3067.68.14

The Stones were not found together.

Neck of large cylindrical Amphora, of pinkish buff ware with beaded lip. Donor, Mr. Philip G. Laver, F.S.A. 3116.14

For this type of Amphora, which is frequently found on Late-Celtic Sites, see Loeschcke, *Haltern*, Taf. xix., 5 and 6.

ROMANO-BRITISH PERIOD.

Cinerary Urn of hard grey ware, with everted brim and tooled trellis pattern on sides, contains a quantity of burnt bones. Height, $11\frac{5}{16}$ ins. Base of pan of brown ware with polished black exterior, used as a cover. 2nd Century, A.D. Donor, Mr. Philip G. Laver, F.S.A. 2981.14

Half of a shallow flanged Bowl, of light grey ware, with polished black exterior and low foot ring. Belgic, 1st Century, A.D. Donor, Mr. R. Godfrey. 2982.14

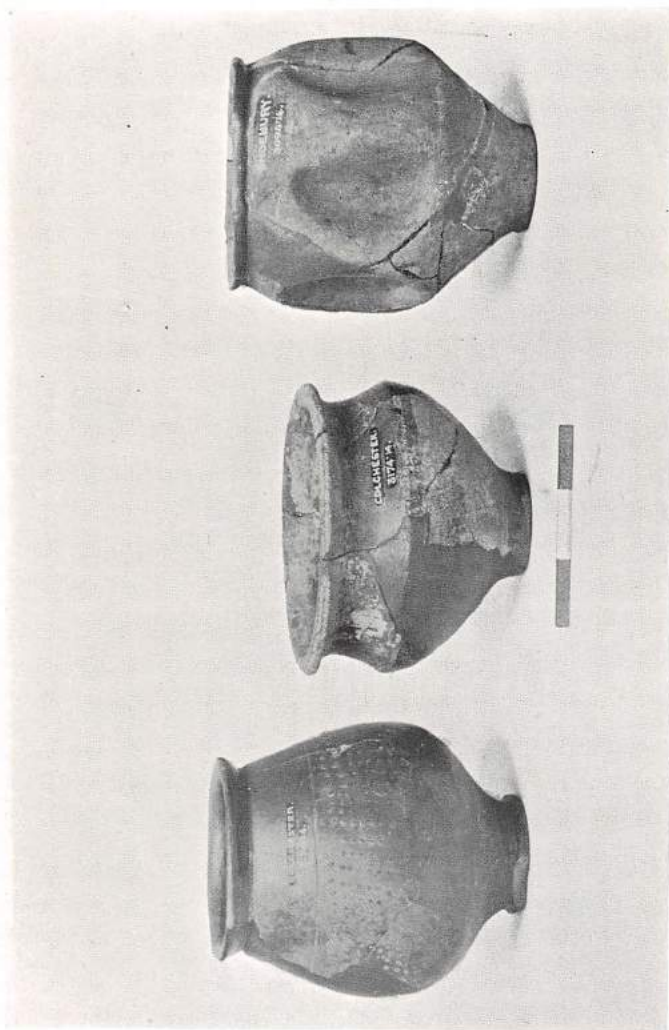
This form appears to be a copy of the "Samian" bowl figured by Ward, *Roman Era in Britain*, Fig. 43, No. 18, and by Ritterling, *Hofheim*, 1913, Plate xxxi. fig. 12. Fragments of these "Samian" examples are preserved in the Museum.

Portion of a shallow Bowl of thin grey ware, with broad moulded flange, similar to type mentioned above, No. 2982.14. Probably Belgic ware, 1st Century, A.D. Found at Shoeburyness. Donor, Quarter-Master-Sergeant J. J. Gurnett. 3010.14

Bead, melon-shaped, of blue vitreous paste. Roman period. Donor, Mr. W. Meaden. 3028.14

Gold Ear Ring of crescent shape, formed by drawing out a small tube to a wire at each end, one of which forms a loop round which the other is twisted. A pendant hung from the ring, of which only the gold attachment remains. Roman period. Purchased. 3053.14

- Bronze Fibula, or brooch, which shows traces of tinning; the upper part of bow is fluted, the dividing ridge being finely notched, the hinge pin is wanting. Found near the gold ear ring described above. Purchased. 3054.14
- Mortarium of buff ware, with broad, nearly vertical rim and smooth interior. Diameter, $7\frac{7}{8}$ ins. 2nd Century, A.D. Donor, Mrs. Adelaide Cater. 3061.14
- Child's Gold Ring, set with a garnet or carbuncle(?) *en cabochon*; found in a grave. Inside diameter of ring, $\frac{6}{16}$ ins. Roman period. Purchased. 3065.14
- A number of fragments of various wares, including "Samian" of forms 15, 18, 24, 27, 29, 30, 36, 37, 38, 43, 45, some of which bear the following potters' stamps, MARTIMA, OPASEN, OFPAS, SCOTNVS, SEXTIMA, SVCESVSF, VITALI, and small Unguent Pot of light buff ware with corrugated body and slender foot (similar to *May-Roman Pottery at York*, pl. xix, fig. 15). Found on site of Town Hall. Donor, Mr. Philip G. Laver, F.S.A. 3074.14
- Iron Axe, and fifteen large and small Iron Nails, from Roman rubbish pits. Donor, Mr. Philip G. Laver, F.S.A. 3075-77.14
- Portion of "Samian" Bowl (Form 37), with free figure decoration in the style of Paternus, a potter of Lezoux, in the second half of the 2nd Century, A.D. Donor, Mr. Philip G. Laver, F.S.A. 3086.14
- Fragment of Roman Brick, $3\frac{1}{4}$ ins. thick, found in High Street. Donor, Mr. Philip G. Laver, F.S.A. 3120.14
- Indented Beaker of hard greyish brown ware, restored by the Curator from fragments purchased March 1914. Height, $4\frac{7}{8}$ ins. Found at Shoebury. Purchased. (*Plate I.*). 3094.14
- Iron object, commonly known as a Hippo-Sandal, but more probably the shoe of a pole brake. Found in the river at Colchester. Roman period. Purchased. 3139.14
- See Pitt-Rivers. *Excavations in Cranborne Chase*, vol. 1, pp 77-79.
- Bronze Pin with ornamented head. Length, 3 ins. Roman period. Purchased. 3172.14



3174.14

3094.14

ROMANO-BRITISH BEAKERS AND BOWL.

From a Photograph by the Curator.

- Base fragment of "Samian" Bowl (Form 37), with large foliated scroll decoration. On the base of the foot ring a small M is incised, probably a mark of ownership. Found in Castle Park. 2nd Century, A.D. Purchased. 3173.14
- Olla, of hard grey ware with polished black surface, everted rim and small beaded foot. The bulge is ornamented with lines of raised dots *en barbotine* beneath a narrow girth groove. Restored by the Curator from fragments found in a Roman rubbish pit. Height, $5\frac{1}{8}$ ins. Belgic ware, 1st Century, A.D. (*Plate I.*). Donor, Mr. Philip G. Laver, F.S.A. 3174.14
- Carinated Bowl, of hard grey ware with polished black exterior; wide mouth and narrow foot. Restored by the Curator from fragments found in a Roman rubbish pit with No. 3174.14. Height, $3\frac{5}{8}$ ins. Probably Belgic Ware, 1st Century, A.D. (*Plate I.*). Donor, Mr. Philip G. Laver, F.S.A. 3174.14
- A number of fragments of wares from a Roman rubbish pit, including the neck of a Lagena with a reeded handle of pinkish ware and base of an Amphora of red ware. Donor, Mr. Philip G. Laver, F.S.A. 3174.14
- Small bronze bell, of conical form with hexagonal loop handle. Height, $2\frac{3}{4}$ ins. Bronze Key. Length, $2\frac{5}{8}$ ins. Two Bronze Eggspoons, with circular bowls and pointed stems. Length, $3\frac{1}{2}$ and $3\frac{7}{8}$ ins. Bronze Hair Pin, with flat expanding engraved head with rectangular opening, imperfect. Length, $5\frac{7}{8}$ ins. Bronze Probe, tapering to a point at each end. Length, $8\frac{7}{8}$ ins. Purchased. 3181-86.15
- Number of fragments of painted Wall Plaster, from a Roman rubbish pit. Donor, Mr. Philip G. Laver, F.S.A. 3196.15
- Bronze Bracelet of twisted wire, similar to Ward 76A (Roman Era in Britain). Bronze Brooch with coil spring, pin wanting. Bronze Brooch imperfect, as Ward fig. 72D. Bronze Nail Cleaner. Bronze Stud. Blue glass Bead. Bone handle of Bodkin, inlaid with jet. Small bronze lid of Flagon. Iron Arrow head. Iron Key, 13th Century. Iron Punch. Three iron Nails. All of Roman period (with exception of key). Found in Braintree. Donor, the Rev. J. W. Kenworthy, to be included in his collection of Braintree Antiquities. 3200.15

Fragment of "Samian" Bowl (Form 37), decoration in two bands; in the upper, a lion springing to r. facing a bull charging to l. (D. 898), portion of a tree; lower band, demi medallions or festoons enclosing birds (D. 1009). Found near Hospital Vespasian-Domitian period. Donor, Dr. E. Chichester. 3204.15

See Knorr. *Rotweill*, 1907, pl. v., fig. 4.

Bead of blue vitreous paste, the surface of which is covered with groups of small pits, which may have held glass or enamel of other colours. Diameter, $\frac{3}{4}$ in.; of hole, $\frac{1}{4}$ in. Roman period Donor, Mr. A. E. Purkiss. 3209.15

See Curle, *Roman Fort at Newstead*, pl. xci., figs. 12 and 16.

Fifteen iron Nails, various types and sizes. Two iron Staples with Eyes. Iron Chisel. Iron Knife with broad tanged blade. Two iron Styli. Iron Spearhead with open socket. Portion of iron Spring of Padlock Portion of iron Hinge with clinched nails, showing thickness of wooden door to which it was attached. Found in Roman rubbish pits. Donor, Mr. Philip G. Laver, F.S.A. 3210.15

A large number of fragments of Late-Celtic and Romano-British wares, including some more or less imperfect vessels, acquired by the late Mr. E. A. Fitch, of Maldon, during the making of the railway between Maldon and Heybridge, also, a number of fragments of "Samian" ware, both plain and decorated, Forms 15, 18, 24, 27, 29, 31, 33, 35, 37, 38, 44, 45, 51, 67 (?) and Ritterling's 12, twenty-two of which bear Potters' Stamps and a "Samian" Bowl (Form 37), with free figure decoration of lions chasing stags and retrograde Potters' Stamp C R in relief below ornamented zone. Restored from fragments by the Curator. (Plate II.). 3214.15

Bronze Fibula, with spiral spring and perforated pin plate. Bronze Fibula, with reeded bow showing traces of gilding. Bronze Fibula, in form of a Sandal, inlaid with pale blue enamel. Two bronze Pins, one with cone shaped head. Bronze Probe, with groove for lancet blade. Bronze Piercer, with handle terminating in an eye for suspension. Bronze Stud, resembling a large collar stud. Cone shaped object of bronze, with moulded base and traces of an iron pin or tang. Two Handles of bronze Spoons. Six fragments of bronze mountings, piece of bronze rod and runner from casting. All from the Fitch Collection, found near Maldon and Heybridge. Purchased. 3214.15



"SAMIAN" BOWL FROM MALDON, 3214.15.

From a Photograph by the Curator,



MODEL OF PEDLAR, WOMAN, 2987.14.

From a Photograph by the Curator.

MEDIÆVAL AND LATER PERIODS.

Model of old Pedlar Woman, in "coalscuttle" bonnet and scarlet cloak, with basket of wares. Height, 12ins. Donor, Mrs. Adelaide Cater. (*Plate III.*). 2987.14

Sampler by Elizabeth Daniell, 1843. Two Bookmarkers, texts worked on perforated card mounted on ribbons. Group of Seaweed in basket mounted on card. Steel latch key, Roman type. Shell cameo, female figure in biga. Spy glass in case. Pen and ink case of painted wood, "A Tunbridge Wells Gift" on label. Book of views, "Thirty-two remarkable places in England and Wales," Price, One Shilling; paper cover, London, 1820. Donors, Mr. Thomas Brett Daniell and Miss Daniell. 2990.14

Double-barrelled Flint lock Gun, with short barrels for shooting in woods, by Manton, date about 1800. Pair of Flint lock Horse Pistols, brass mounts, by Hewson, London. Flint lock Pistol with octagonal barrel, by Bennett and Lacy, 67, Royal Exchange, London. Pair pocket Flint lock Pistols, by W. Richards. Pair small Flint lock Pistols with octagonal barrels, by Prosser, London. Large leather Powder Magazine to hold 20lbs., scored 20 on base. Steel Crossbow for bullets, by Harcourt, Ipswich. Service Sword with damascened blade, inscribed on one side "Grenadier Guards"; on the other, "For my Country and King," with Royal Arms, mantling, etc.; on the back R. Johnston, St. James's Street, London. This sword probably belonged to Sir Charles Rowley, about 1825; the gun metal mounts of the leather sheath were gilded and one is engraved R. Johnston. late Bland & Foster, Sword Cutler and Belt maker to his Majesty, 68, St. James's Street, London. Sword with gilt hilt and guard, burnished blade, in iron sheath. This sword and sheath do not appear to belong to one another. Donor, Sir Joshua T. Rowley, Baronet. 2995-3003.14

Set of "Latten" Bells with black leather, brass mounted hood, fringed with scarlet wool. This was fixed to the hames of the horse collar like the Essex Hounce. Purchased in Kent for comparison with the Hounce. 3006.14

Miss Jekyll in "Old West Surrey," p. 213, says, "There were four rings of bells in the set, and each set had four bells, except the one with three of the largest bells of deep tone; each set made its own chord, while the whole clanged and jingled in pleasant harmonies."

"Latten is an old English word for a kind of brass or bronze, answering to the French *laiton*." For a description of the Hounce, with illustration, see Annual Report, 1913-14, p. 21, plate vi.

Dulcimer with painted wood case ; a common toy about sixty or seventy years ago. Donor, Mr. J. Miller Winch.

3007.14

Pair of Double-barrelled Service Pistols, for use with percussion caps, by Tipping & Lawden, Holborn, London. Silver plate engraved with crest on stock. In mahogany case with powder horn, bullet moulds, tools, caps, etc. Donor, the Rev. J. P. Noyes.

3025.14

Pair ornamental Candlesticks, in white metal with brass sconces. Early 19th Century. Donor, Mrs. A. E. Purkiss.

3029.14

Fishing line furnished with whitethorn hooks, formerly used on the coast of Essex. Donor, the Hon. Curator, Alderman Henry Laver, F.S.A.

3033.14

Brass Spirit Taper with mahogany handle ; on one side of reservoir, in relief, H. M. Greville, Northampton Regd. Novr. 5th 1845, No. 576 ; on the other, Wilmot, Roberts & Co. Manufacturers, Birmingham. Length, 11 $\frac{1}{4}$ ins. Donor, Mr. J. Miller Winch.

3056.14

Pair of Curling Irons, used about middle of last Century. Length, 9 $\frac{1}{4}$ ins. Donor, Mr. J. Miller Winch.

3057.14

Five Horse Shoes of Iron, of various dates, and one modern shoe for comparison. Donor, the Hon. Curator, Alderman Henry Laver, F.S.A.

3066.14

Iron Candlestick with moulded collar. Height, 9 $\frac{1}{8}$ ins. Purchased.

3073.14

Scarificator, formerly used for cupping, in shagreen case. Donor, the Hon. Curator, Alderman Henry Laver, F.S.A.

3078.14

Iron Key, with jointed stem and reniformed bow. 16th Century. Found near the Priory, Earls Colne. Donor, Mrs. L. B. Root.

3079.14

Iron Knife with hammered hollow socket. Length, 7 ins. Found at Wickham Bishops. Age doubtful. Donor, Mr. John Akerman.

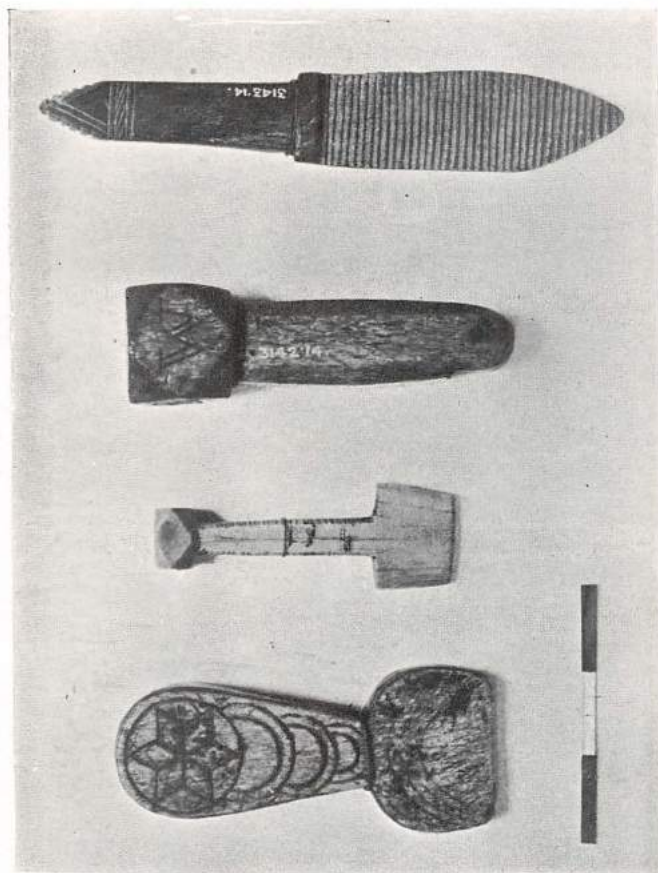
3092.14

Tea Urn Stand with woolwork. Small red leather Casket. Small Box Iron with heater. Transparent drawing Slate. Pair antique Razors with tortoise shell handles, in case. Turned wood Medal Box. Antique paper Valentine. Donors, Mr. Thomas Brett Daniell and Miss Daniell.

3096.14

- Plate with Medallion and Inscription "Father Mathew, the great advocate for Temperance." Donor, Mr. Philip G Laver, F.S.A. 3101.14
- Iron blade of Dagger, or Knife, with maker's stamp, a Tudor rose crowned, one each side. Length, 15½ ins. 16th Century. Donor, Mr. Philip G. Laver, F.S.A. 3102.14
- Antique dark Lantern. Ten corset Whalebones. Four hanks Embroidery Silks. Framed Map, "The Land of Matrimony." Small willow pattern Plate. Small leather Jewel Box. Hank of small Beads. Steel Button-hook in green ivory handle. Amber heart. Polished cornelian. Pair coral Pendants. Small volume of Psalms and Dr. Watts' Hymns, 1818. Donors, Mr. Thomas Brett Daniell and Miss Daniell. 3107.14
- Water Bottle of the Loyal Colchester Volunteers, painted chocolate with inscription in white within a circle A|LCV| 25. This bottle was in the possession of the Bawtree family. John Bawtree was Lt-Colonel Commandant in 1803. Purchased. 3109.14
- Old Bayonet used with "Brown Bess" rifle. Purchased. 3110.14
- Embossed Tudor Rose, from a large gotch of red ware. 16th Century. Purchased. 3115.14
- Brass Table Spoon, with hexagonal stem and baluster top. Middle 16th Century. Donor, Mr. A. G. Wheeler. 3118.14
- Brick, from old kiln at West Bergholt. 8½ ins. × 4 ins. × 1¼ ins. About 15th Century. Donor, Mr. Philip G. Laver, F.S.A. 3121.14
- Set of ivory Spillikins. Purchased. 3127.14
- Antique Spectacles with steel frame, in shagreen case. Early 19th Century. Purchased. 3128.14
- Fishing Line with white-thorn hooks, procured by donor from a Thames fisherman, now rarely used. Donor, Mr. Edward Lovett. 3132.14
- Large iron Key, with reniform bow, piped and moulded stem with perforated web. 16th Century. Purchased. 3144.14
- Bronze Key, with annular bow, piped stem, web deeply grooved and divided into two groups of four points on edge. About 14th Century. Purchased. 3145.14

- Small bronze Key, with annular bow, quadrilateral stem and plain T-shaped web. 14th Century. Purchased. 3146.14
- Bronze Key, stamped with ring and dot pattern, bow imperfect flat indented web. Date uncertain. Purchased. 3147.14
- Iron Spur, with curved neck and slender shanks, buckle and strap plates, and eleven pointed star rowel. 16th Century. Purchased. 3148.14
- Drinking Horn, 6 ins. high. Found in an old house in Colchester. Purchased. 3149.14
- Two leather Bottles, in shape of a small keg, from which "clouts" have been cut, converting the bottles into receptacles for odds and ends. One stamped on base T.M. Found in an old house in Colchester. Stuart period. 3150-3151.14
- Tobacco Jar of lead or pewter, with bands of annular ornament, domed lid with "blackamoor" head for handle. Found in an old house in Colchester. 18th Century. Purchased. 3152.14
- Large Watchman's Rattle, with double tongue and ratchets. 18th Century. Purchased. 3153.14
- Wooden Bowl, with handle in one piece, from Manningtree. Early 19th Century. Purchased, 3154.14
- Two Windows, with carved oak tracery, corner post, beams, etc., from an old house (No. 49), in High Street, now demolished. Early 15th Century. Donors, Messrs. Lawrence & Co. 3156.14
- Two Sword Scabbards, of thin wood covered with leather, with tooled ornamentation. One for a straight, the other for a curved sword, or cutlass. The straight scabbard has the initials JA stamped twice on back Length, 30 ins. 17th Century Found in No. 49, High Street, when demolished. Donors, Messrs Lawrence & Co. 3157-3158.14
- Iron Stirrup, found in No. 49, High Street, when demolished. 17th Century. Donors, Messrs. Lawrence & Co. 3159.14
- Constable's Staff, of turned wood painted, with Crown and Borough Arms and inscription V.R. James Mason Cemetery, in gold and colours. Length, 10½ ins. Purchased. 3164.14



BONE TOOLS, 3140-3143-14.

From a Photograph by the Curator.

- Pair antique Spectacles in embossed cardboard case with initials R.B. Purchased. 3165.14
- Special Constable's Staff, of plain turned wood. Length, 10 $\frac{3}{4}$ ins. Donor, Councillor A. M. Jarmin. 3166.14
- Sliding Toasting Rack, of iron, to fit on grate bars. Length, 18 $\frac{1}{2}$ ins. 18th Century. Donor, Mrs. Adelaide Cater. 3167.14
- Iron Joint Fork with two prongs, for lifting joints from pot or spit. Length, 21 ins. 18th Century. Donor, Mrs. Adelaide Cater. 3168.14
- Large Glass Bottle for wine or spirit, of cylindrical form with deep "kick." The circular glass Seal on side bears the initials G * C and date 1796. Height 10 $\frac{1}{4}$ ins., diameter 4 $\frac{7}{8}$ ins. Purchased. 3169.14
- This Bottle belonged to Golding Constable, the father of the celebrated painter. It was purchased at the sale of Daniel Constable Whalley over 40 years ago, by F. C. Cook, of Thorrington, Essex, of whom it was acquired by Mrs. Adelaide Cater, in 1914.
- Tobacco Pipe, time of Charles II.; and a portrait Medallion from a Bellarmine 17th Century. Donor, Mr. Philip G. Laver, F.S.A. 3174.14
- Two Iron Steelyards of an obsolete type. Donor, Mr. T. Davies. 3178.14
- Glass Pen, in black card case, in use about 1800. Donor, the Hon. Curator, Alderman Henry Laver, F.S.A. 3189.15
- Bone Fruit Knife. 18th Century. Donor, the Hon. Curator, Alderman Henry Laver, F.S.A. 3190.15
- Card of thirteen hand-made Buttons. Early 19th Century. Donor, the Hon. Curator, Alderman Henry Laver, F.S.A. 3191.15
- Salt Cellar, of Delft ware with bluish glaze. Found at Copford. 18th Century. Donor, Mr. Philip G. Laver, F.S.A. 3198.15
- Brass Strap Buckle with tang complete. Length, 2 in. Found in donor's garden. 16th or 17th Century. Donor, Mr. H. Lazell 3211.15
- Dandy Cane of carved bamboo. Length, 4 feet 4 ins. 18th Century. Donor, Mrs. Adelaide Cater. 3215.15

Large serrated Ridge Tile, glazed, imperfect. Length, 11 ins
13th or 14th Century. Donor, Mr. Philip G. Laver, F.S.A.

3219.15

Circular papier-maché Wafer Box, with painting on lid representing a Sweep's boy reading the new act; beneath is the line "I have a silent sorrow here." Diameter, $3\frac{5}{8}$ ins. Medal Box of turned wood, diameter, $2\frac{7}{8}$ ins. Three Steel Frames for bead purses. Gilt metal repoussé Frame for purse. Cut steel Purse ring. Gilt ditto. Early brass Thimble. Bone Fish Counter. Mother-o'-pearl ditto. Two strings of Beads. Twenty-two skeins and twists of old coloured Silks. Reel "Best China Sewing Silk." Donor, Mrs. Havard.

3221.15

Four bone tools, one ornamented with engraved circles, semi-circles and six pointed stars; another with faceted head has the initials R.W. engraved on two facets; another resembles a rasp. Use doubtful. Found together in river at Colchester. Date uncertain. Purchased. (*Plate IV.*)

3140-3143.14

Small bronze Tag, terminating in a dragon's head with engraved perforated plate for attachment to a strap. Length, $1\frac{3}{8}$ ins. Purchased.

3187.14

COINS, TOKENS, MEDALS.

Bronze Medal, struck in memory of the donor's father, Edward Milligan Beloe, 1826-1907, of King's Lynn. Donor, Mr. E. M. Beloe, F.S.A.

3018.14

Four Roman Coins, including one of Gallienus (A.D. 254-268), *Rev.* FORTVNA REDVX. Donor, the Hon. Curator. Alderman Henry Laver, F.S.A.

3019.14

Third Brass of Constantine the Great (A.D. 306-337). *Rev.* GLORIA EXERCITVS. Purchased.

3020.14

Trade Token. *Obv.* William Aldred. *Rev.* In Colchester, ^AWM. 17th Century. Purchased.

3020.14

First Brass of Crispina, wife of Commodus (died 183 A.D.). *Rev.* VENVS [AVG]. S.C. Donor, Mr. A. T. Baker.

3026.14

Second Brass of Claudius (A.D. 41-54). *Rev.* PAX AVGVSTA. *Ex.* S.C. Donor, Mr. W. Meaden.

3028.14

- Money Changer's Weight in Brass. *Obv.* Head of James I.
I.R.M.BRIT. *Rev.* VS VLD (a quarter unite) beneath
a crown. Donor, Mr. W. Meaden. 3028.14
- Guernsey, 8 Doubles, 1834. Farthings, Victoria, 1878 and
1887. Half Farthing, Victoria, 1844. Donor, Mr. T. B. S.
Menzies. 3037.14
- Trade Token. *Obv.* John Lambe, 1656. *Rev.* Of Coulchester,
L. Donor, Mr. Felix King. 3038.14
- Bank of England Token for 1s. 6d. George III., 1912.
Donor, Mr. A. E. Partridge. 3063.14
- Money Changer's Weight in Brass. *Obv.* Head of King to r.
Gulielmus III. Dei Gratia. *Rev.* Crown and crossed
Sceptres. 1 Guinea W. Purchased. 3081.14
- Silver Denarius of Roman Republic. Donor, Mr. J. Asten.
3084.14
- Second Brass of Constantine the Great (306-337 A.D.). *Rev.*
SOLI. INVICTO COMITI. Donor, Mr. A. T. Baker.
3087.14
- Third Brass of Tetricus (A.D. 268-273). *Rev.* Illegible.
Donor, Mr. Charles E. Benham. 3090.14
- Trade Token. *Obv.* Tho. Lambe at Butts. *Rev.* Gate in
Coulchester, 1654. Found at Marks Tey. Donor, Mr.
William Little. 3106.14
- Third Brass of Constantius II. (A.D. 337-350). *Rev.* GLORIA
EXERCITVS. Third Brass of Constantinopolis. *Rev.*
Victory with spear and shield on prow of galley. Donor,
Councillor J. W. Bare. 3119.14
- Six Silver Denarii, viz., Julia Domna (Augusta). *Rev.*
PIETAS PVBLICA. Constantius II. *Rev.* VOTIS XXX
MVLTIS XXXX. Gratian. *Rev.* URBS ROMA,
TRPS. Valens. *Rev.* URBS ROMA. Valentinian II.
Rev. VIRTVS ROMANORVM. Magnus Maximus.
Rev. VIRTVS ROMANORVM. Second Brass
Constantius Chlorus. 2 Third Brass Magnentius.
2 ditto Constantius II. 6 ditto Constans. 1 ditto
Constantine. 3 ditto Urbs Roma type. All the above
coins are from the collection of the late Rev. J. H.
Pollexfen. Purchased. 3155.14

- Gold Aureus of Constantius II. (A.D. 323-361). Third son of Constantine the Great. *Obv.* Full faced bust, FL IVL CONSTANTIVS PERPAVG. *Rev.* Two figures supporting a shield inscribed VOTXXX MVLTXXXX. *Round the field*, GLORIA REIPUBLICAE. *Ex.* SMANS. Found in Essex. Purchased. 3177.14
- Small Brass of Gallienus (A.D. 253-268). *Rev.* ORIENS AVG. Two ditto, Constantine family Donor, Mr. A. E. Purkiss. 3193.15
- Farthing, Victoria, 1853. Donor, the Curator, Mr. A. G. Wright. 3194.15
- A number of Roman and English Coins, Tokens, Abbey Jettons, etc., found at Braintree, to be included in the Kenworthy Collection. Donor, the Rev. J. W. Kenworthy. 3200.15
- A number of Roman, Saxon and English Coins, Seventeenth and Eighteenth Century Tokens and two Medals. From the collection of the late Mr. E. A. Fitch, Maldon. Purchased. 3214.15
- Penny of Henry II. *Obv.* Crowned head, full face, HENRICVS REX. *Rev.* Short + AIMER ON LUND. +. Found by Private Duncan, "B" Coy. 10th (Service) Battalion Royal Fusiliers, while digging a trench in a field south of Donyland Wood, about 900 yards N.N.W. of Fingringhoe Church, 28th December, 1914. Donor, Major Raymond F. Boileau, 10th (Service) Battalion Royal Fusiliers. 3217.15

PRINTS, MAPS, PHOTOGRAPHS, AND PRINTED MATTER.

- Two plates of Late-Celtic and Roman Pottery found in Surrey. Donor, Mr. F. H. Elsley. 2989.14
- Four Engravings of Colchester Castle, Priory and St. Mary Magdalen's Church, published by S. Hooper, 1783. Donor, Mr. W. J. Wyman. 3004.15
- Three Pictorial Postcards of the Bignor Roman pavements. Donor, Major E. C. Freeman, R.A.M.C. 3021.15
- Two Engravings of Mr. Edward Bright, late of Maldon, and Robert Devereux, Earl of Essex Published for J. Hinton, 1751. Donor, Mr. Arthur Smith, F.E.S., etc. 3027.14

- Photograph of Guttus, of buff ware, found with other Roman remains at Long Melford, 1913. Donor, Dr. J. Sinclair Holden. 3058.14
- Stereoscopic coloured Portrait of Major John F Bishop, seven times Mayor of Colchester, 1863-1876, in leather case with lenses Donor, Mrs. Veasey. 3103.14
- Seven framed pencil Drawings by Josiah Parish, of views in the old Botanic Gardens, Colchester, Purchased. 3108.14
- "An Accurate Map of the County of Essex," by Eman Bowen. Donor, Mr. J. W. Gale. 3111.14
- Six Pictorial Postcards of Excavations at Letocetum (Wall) Donor, Mr. G. J. Buscall Fox. 3137.14
- New Testament, bound in blue leather, stamped in gold on side. with crown, garter, flags, etc., V.R. Jubilee, 1887. Donor, Miss Omond. 3138.14
- Photograph of portion of Late-Celtic Firedog in the Maidstone Museum. Donor, Mr. J. H. Allchin. 3176.14
- Two sets of British Museum Pictorial Postcards, Bronze Age and Roman Britain. Donor, Mr. G. J. Buscall Fox. 3202.15
- Four unmounted Photographs of ornamental Plaster Ceiling at 97, The Hythe. This house was formerly "The Yorkshire Grey" public house and dates from the 16th Century; the ceiling is later, about James the Second's time. Purchased. 3203.15
- Coloured Lithograph of Ancient Roman Pavement at Woodchester, as remaining in 1880. Donor, Mr. F. C. Wellstood, M.A. 3205.15
- Eight Photographs of Roman Antiquities, found in Colchester and in collection of donor. Donor, Mr. A. G. Wheeler. 3226.15

DEPOSITED.

- Gold Denarius, or Aureus, of Nero (A.D. 54-68). *Obv.* NERO AVG CAESAR IMP. *Rev.* Within a wreath EX.S.C. Round the edge PONTIFMAXTRP. Deposited by Mr. W. C. Wells. 3052.14

Perforated Axe Hammer of Stone, the shaft hole, tapering from each side, about 2 ins. diameter; the head flat, sides nearly so and parallel. Length, $8\frac{3}{4}$ ins. Found in Barking Creek. Late Neolithic or Early Bronze Age. Deposited by Mr. W. C. Wells. 3124.14

Bronze Palstave, with semi-elliptical ornament below stop, through which runs a vertical rib. Length, 6 ins. Found in Epping Forest. Middle Bronze Age. Deposited by Mr. W. C. Wells. 3125.14

A similar specimen from Harston is figured in Evans, *Ancient Bronze Implements*, fig. 60.

Bronze Socketed Axe with loop, the socket slightly moulded at mouth, which is oval, in section. Length, $3\frac{1}{2}$ ins. Found at Stratford, Essex. Late Bronze Age. Deposited by Mr. W. C. Wells. 3126.14

A similar example of this characteristic Irish type is figured in Evans' *Ancient Bronze Implements*, fig. 119. Other examples found in Essex are in the Museum collection.

Museum Library.

- The Bronze Age in Ireland, by George Coffey, Dublin, 1913
Purchased. 2983.14
- Belfast Museum Publications. Nos. 42, 44. Donor, Mr.
Arthur Deane. 2984.14, 3160.14
- John Hall of Wivenhoe. By H. W. Lewer, F.S.A. (Reprint).
Donor, the Author. 2986.14
- The Opening of a Mound at Chadwell St. Mary, by Miller
Christy and F. W. Reader. Report by the Morant Club,
1914 (Reprint). By Subscription. 2991.14
- The Opening of Plumberrow Mount in Hockley. By E. B.
Francis. Report by the Morant Club, 1914. (Reprint).
By Subscription. 2991.14
- Sur L'Anse Funiculaire, par le Dr. Adrien Guébard, 1913
(Extrait). Sur Quelques Curiosités Céramiques de
L'Antiquité, par le Dr. A. Guébard, A.F.M. (Extrait).
Les Bronzes Préhistoriques trouvés dans les Alpes
Maritimes, par le Dr. Adrien Guébard, A.F.M. (Extrait).
Société Préhistorique Française, Rapports LVIII-LXII.
Donor, Dr. Adrien Guébard 2992.14
- Hull Museum Publications, Nos. 98, 99, 100, 101, 102, 105.
Donor, Mr. Thomas Sheppard, F.G.S. 2993.14, 3046.14,
3224.15
- Excavations on Rockbourne Down, Hampshire. By Heywood
Sumner, F.S.A., 1914. Donor, the Author. 3005.14
- White Quartz Pebbles and their Archæological significance, by
Nona Lebour. (Reprint.) Donor, the Author. 3013.14
- On the Presence of Shell Fragments in Prehistoric Pottery, by
J. Wilfrid Jackson, F.G.S. (Reprint). Donor, the
Author. 3015.14
- Pigmy Flint Implements, their Provenance and Use. By W. H.
Sutcliffe, F.G.S., and W. A. Parker, F.G.S. (Reprint).
Donor, Mr. J. Wilfrid Jackson, F.G.S. 3015.14
- Pigmy Flint Implements. The Rochdale Floor. By W. H.
Sutcliffe, F.G.S., and W. A. Parker, F.G.S. Donor, Mr.
J. Wilfrid Jackson, F.G.S. 3015.14

- The Corinium Museum. Guide to Roman Remains. Tenth Edition. By Sir Arthur H. Church, K.C.V.O., etc. Donor, Mr. E. C. Sewell. 3017.14
- Brighton and Hove Archæologist, published by the Brighton and Hove Archæological Club. Edited by Frederick Harrison, M.A., 1914. Donor, Mr. Eliot Curwen. 3023.14
- The Journal of Roman Studies. Vol. III., part 2, 1913. By Subscription. 3032.14
- The Public Utility of Museums. Official Report of the Debate in the House of Lords, May 20th, 1914. Donor, The Right Honourable, the Lord Sudeley. 3034.14
- Royal Institution of South Wales, Swansea. Catalogue of Antiquities, 1913. Donor, Col. W. Ll. Morgan, R.E. 3035.14
- Fangfoss Church. By the Rev. W. D. Wood-Rees, Vicar. (Reprint.) Donor, the Author. 3039.14
- Die Keramik des Kastells Niederbieber bearbeitet Von Franz Oelmann. Frankfurt a M., 1914. Purchased. 3043.14
- Guide to the Dorset County Museum, 1913. Compiled by John E. Acland, F.S.A., Curator. Donor, Mr. G. J. Buscall Fox. 3047.14
- Ancient Britain and the Invasions of Julius Cæsar. By T. Rice Holmes, Hon.Litt.D. (Dublin). Oxford, 1907. Donor, Mr. W. M. Tapp, LL.D., F.S.A. 3048.14
- Paviland Cave: An Aurignacian Station in Wales (Huxley Memorial Lecture, 1913). By W. J. Sollas, M.A., Sc.D., LL.D., F.R.S. Purchased. 3049.14
- The Arrival of Man in Britain in the Pleistocene Age. (Huxley Memorial Lecture, 1910.) By W. Boyd Dawkins, M.A., Hon.D.Sc., F.R.S. 3050.14
- The Metals in Antiquity. (Huxley Memorial Lecture, 1912.) By William Gowland, Assoc. R.S.M., F.R.S., F.S.A. 3051.14
- The Roman Cemetery in the Infirmary Field, Chester. By R. Newstead. (Reprint). Donor, the Author. 3055.14
- English Costume from Prehistoric Times to the End of the Eighteenth Century. By George Clinch, F.S.A. Scot., F.G.S. 3059.14

- The Colne Oyster Fishery. By Henry Laver, Chairman of the Board. (2 copies.) Donor, the Author. 3060.14
- The Re-attribution of a Seleucid Tetradiachm. By E. J. Seltman, New York, 1914. (Reprint.) Donor, the Author. 3062.14
- Kelly's Directory of Essex, 1914. Purchased. 3080.14
- Die Nauheimer Funde der Hallstatt und Latene-Period von Dr. F. Quilling. Frankfurt a M., 1903. Purchased. 3082.14
- Origine du Culte des Morts. Les Sépultures Préhistoriques, par Paul de Mortillet, Paris, 1914. Purchased. 3083.14
- England before the Norman Conquest. By Charles Oman, M.A. 3rd edition. London, 1913. Purchased. 3085.14
- An Oronsay Shell Mound. By A. Henderson Bishop, F.S.A. Scot. (Reprint.) Donor, the Author. 3089.14
- Congress of Archæological Societies, June 26th, 1914. Report of Committee on Ancient Earthworks. Donor, Mr. Albany F. Major, Hon. Secretary. 3095.14
- Report of the Research Committee of the Society of Antiquaries of London. No. 2, Excavations on the site of the Roman Town of Wroxeter, Shropshire, in 1913. Purchased. 3100.14
- Essex Naturalist. Vol. XVII., parts 10-12. Donors, the Council of the Essex Field Club. 3104.14
- The Excavations of the Augustinian Priory Church of Little Dunmow. By Alfred W. Clapham, F.S.A. Report by the Morant Club, 1914. (Reprint.) By Subscription. 3105.14
- Historical Sketches of Old Charing. By James Galloway, A.M., M.D. Donor, the Author. 3113.14
- Proceedings of the Prehistoric Society of East Anglia for 1913-14. Vol. I., part IV. By Subscription. 3114.14
- The Accuracy of the Domesday Land Measures in Middlesex and their Roman origin. By Montagu Sharpe. Donor, the Author. 3122.14
- Botanical and Geological Observations made during the Opening of the Romano-British Barrow on Mersea Island. By S. Hazzledine Warren, F.G.S. Report of the Morant Club (Reprint). By Subscription. 3123.14

- Roman Coins. By Cav. Francesco Gneccchi, translated by the
Revd. Alfred Watson Hands. 2nd Edition, 1903. Pur-
chased. 3129.14
- Roman (and other) Triple Vases. By Walter J. Kaye, Junr.,
B.A. F.S.A. Scot. London, 1914. Purchased. 3130.14
- English Charms, Amulets and Mascots. By Edward Lovett.
(Reprint.) Donor, the Author. 3133.14
- The Folk Lore of the Horse. By Edward Lovett. (Reprint.)
Donor, the Author. 3134.14
- The Origin and Folk Lore of Boats. By Edward Lovett,
F.R.H.S. (Reprint.) Donor, the Author. 3135.14
- Letocetum (Wall) Excavations, 1912. By R. J. Mott and the
North Staffs Field Club. (Reprint.) Donor, Mr. G. J.
Buscall Fox. 3136.14
- Roman Britain in 1913. (British Academy Supplemental
Paper, II.) By Professor F. Haverfield. Oxford, 1914.
Purchased. 3161.14
- The Journal of Roman Studies. Volume IV., part I. 1914.
By Subscription. 3162.14
- A Saxon Brooch from Brislingcote, near Burton-on-Trent.
By the Rev. G. Montagu Benton, B.A. (Reprint.)
Donor, the Author. 3170.14
- On Certain Carvings in Saffron Walden Church. By the Rev.
G. Montagu Benton, B.A. (Reprint.) Donor, the Author.
3171.14
- Corstopitum. Report on the Excavations in 1913. (Reprint.)
Donor, Professor F. Haverfield, LL.D., F.S.A. 3175.14
- Early Dolls. By Edward Lovett. (Reprint.) Donor, the
Author. 3179.14
- Lincoln Museum Publication, No. 18. Donor, Mr. Arthur
Smith, F.E.S., etc. 3192.15
- An Account of the Roman Antiquities discovered at Wood-
chester in 1695. Second Edition, 1880. Donor, Mr. F. C.
Wellstood, M.A. 3205.15
- General Guide to Gloucester Museum. Published by the
Museum Commiteee, 1914. Donor, Mr. A. G. Thacker.
3207.15
- Archæologia. Vol. LXV., 1913-14. Purchased. 3212.15

- Proceedings of the Society of Antiquaries of London. Second Series. Vol. XXVI., 1913-14. Purchased. 3213.15
- Margidunum, a Roman Fortified Post on the Fosseway. Excavations in 1913. By F. Oswald and T. Davies Pryce. (Reprint.) Donors, the Authors. 3216.15
- Romano-British Potteries in Mid-Somerset. By Arthur Bulleid, F.S.A. (Reprint.) Donor, the Author. 3218.15
- Notes on some Traces of Ancient Settlements near Shoburyness. By Mrs. Charles Chenevix Trench. (Reprint.) Donor, the Author. 3222.15
- Prehistoric Gatherings from Wigtonshire. By Nona Lebour. Donor, the Author. 3223.15
- Guide to Fossil Remains of Man * * * in the British Museum (Natural History), 1915. Donor, Mr. G. J. Buscall Fox. 3227.15
- Handbook to the Collection of British Pottery and Porcelain in the Museum of Practical Geology, Jermyn Street, London, S.W., 1893. Donor, the Curator, Mr. Arthur G. Wright. 3228.15
- Manuel d'Archéologie, par Joseph Déchelette. Tome II., Troisième partie. Second Age du Fer ou Époque de La Tène. Paris. Purchased. 3229.15
- The Antiquary. Vol. L., 1914. Monthly. Purchased. 3230.15
- Spinks' Numismatic Circular. Vol. XXII., 1914. By Subscription. 3231.15
- The Museums' Journal. Vol. 13, 1913-14. By Subscription. 3232.15
- Proceedings, Society of Antiquaries of Newcastle-on-Tyne. 3rd Series. Vol. VII., Part 2 and Plate. Donor, Mr. R. Blair F.S.A. 3233.15

Reports.

RECEIVED TO MARCH 31, 1915.

Belfast, Public Art Gallery and Museum.
 Bootle, Free Library and Museum.
 Bristol, Museum and Art Gallery.
 Buckingham, County Architectural and Archæological Society.
 Cambridge, Fitzwilliam Museum.
 Cambridge, Friends of the Fitzwilliam Museum.
 Cambridge, University Library.
 Cardiff, The National Museum of Wales.
 Chester, Society of Natural Science, etc.
 Doncaster, Art Gallery and Museum.
 Dundee, Free Library and Museum.
 Edinburgh, Royal Scottish Museum.
 Glasgow, Museum and Art Gallery.
 Gloucester, Public Museum.
 Ipswich, Borough Museums and Free Library
 London (C.C.), Horniman Museum and Library.
 Massachusetts, U.S.A., Mount Holyoke College.
 New York, American Museum of Natural History.
 Norwich, Castle Museum.
 Oxford, Ashmolean Museum
 Rochdale, County Borough Museum, etc.
 South Wales, Royal Institution.
 Spalding, Gentlemen's Society.
 Stockport, County Borough Museum, etc.
 Stratford-on-Avon, Shakespeare's Birthplace.
 Sydney, N.S.W. Technological Museum.
 Taunton, Castle Museum.
 Warrington, County Borough Museum.
 Washington, U.S.A., National Museum.
 Weston-Super-Mare, Library and Museum.
 Yarmouth, Great, Free Libraries and Museum.

*N.B.—Curators of Museums will much oblige by forwarding
 their Reports in exchange as issued.*

List of Donors.

Akerman, John (Wickham Bishops).
 Allchin, J. H. (Maidstone).
 Asten, J.
 Baker, A. T.
 Bare, Councillor J. W.
 Benton, Rev. G. Montagu (Saffron Walden).
 Beloe, E. M. (King's Lynn).
 Benham, C. E.
 Bishop, A. Henderson (Thornton Hall by Glasgow).
 Blair, R. (South Shields).
 Boileau, Major Raymond F.
 Bulleid, Dr. Arthur (Midsomer Norton).
 Cater, Mrs. Adelaide.
 Curwen, Eliot (Hove).
 Chichester, Dr. E.
 Daniell, Miss S. A. (West Bergholt).
 Daniell, Thos. B. (West Bergholt).
 Davies, T.
 Deane, Arthur (Belfast).
 Elsley, F. H.
 Essex Field Club, Council of (Stratford).
 Fox, G. J. Buscall (Upper Tooting).
 Freeman, Major E. C.
 Gale, J. W.
 Galloway, Dr. James (London).
 Godfrey, R.
 Guébbard, Dr. Adrien (France).
 Gurnett, J. J. (Shoeburyness).
 Hall, Mrs. T. S. (Weeting).
 Havard, Mrs. (West Bergholt).
 Haverfield, Prof. F. (Oxford).
 Holden, Dr. J. Sinclair (Sudbury).
 Jackson, J. Wilfrid (Manchester).
 Jarmin, Councillor A. M.
 Kenworthy, Rev. J. W.
 King, Felix (Peldon).
 Laver, Philip G.
 Laver, Henry (Hon. Curator).
 Lawrence and Co., Messrs.
 Lazell, H.

Lebour, Mrs. G. A.
 Lewer, H. W. (Loughton).
 Little, W. (Marks Tey).
 Lovett, Edward (Croydon).
 Major, Albany F. (Croydon).
 Martin, Miss Hilda (Lexden).
 Meaden, W.
 Menzies, T. B. S. (Aldham).
 Morgan, Col. W. Ll. (Swansea).
 Newstead, Prof. R. (Liverpool).
 Noyes, Rev. J. P. (Finchingfield).
 Omond, Miss (Colne).
 Oswald, Dr. F. (Nottingham).
 Partridge, A. E. (Ford Street).
 Purkiss, Mrs. A. E.
 Purkiss, A. E.
 Prehistoric Society of East Anglia.
 Pryce, Dr. T. Davies (Nottingham).
 Root, Mrs. L. B. (Wakes Colne).
 Rowley, Sir Joshua T. (Hadleigh, Suffolk).
 Seltman, E. J. (Berkhamstead).
 Sewell, E. C. (Cirencester).
 Sharpe, Montagu (Brentford).
 Sheppard, T. (Hull).
 Smith, Arthur (Lincoln).
 Sudeley, the Right Hon. Lord (Ham Common).
 Tapp, Dr. H. M. (London).
 Thacker, A. G. (Gloucester).
 Trench, Mrs. C. Chenevix (Camberley).
 Veasey, Mrs. (Earls Colne).
 Wellstood, F. C. (Stratford-on-Avon).
 Wheeler, A. G. (Clacton-on-Sea).
 Winch, J. Miller.
 Wood-Rees, Rev. W. D. (Barmby Moor).
 Wright, A. G. (Curator).
 Wyman, W. J. (London).

DEPOSITOR.

Wells, W. C. (Wembley).

FORMS OF BEQUEST.

I bequeath out of such part of my personal Estate as may by Law be bequeathed for such purposes, to the Mayor, Aldermen and Burgesses of the Borough of Colchester, the sum of

free from Legacy Duty, for the Benefit of the Corporation Museum of Antiquities, to be expended in such a way as they may deem expedient; and I direct that the Receipt of the Treasurer for the time being of the said Borough shall be an effectual discharge for the same Legacy.

*I bequeath**

*ANTIQUITIES
OR OTHER
OBJECTS.

to the Mayor, Aldermen and Burgesses of the Borough of Colchester (Free from Legacy Duty, which duty I direct shall be paid out of my pure personality), for the Benefit of the Corporation Museum of Antiquities, either for Exhibition, or for such other purposes as they may deem expedient: and I further direct that the Receipt of the Town Clerk for the time being of the said Borough shall be an effectual discharge for the same Legacy.



(REVERSE OF BOROUGH SEAL, 15TH CENTURY.)

BOROUGH OF COLCHESTER.

**The Colchester Museum of Local
Antiquities.**

(Founded 1846).



(OBVERSE OF BOROUGH SEAL, 15TH CENTURY).

Report of the Museum & Muniment Committee

For the Year ended 31st March, 1916.

Price Twopence.

Frontispiece.



COLCHESTER CASTLE, NORMAN GATEWAY.

From a Photograph by the Curator.

Borough of



Colchester.

THE
Corporation Museum
OF
LOCAL ANTIQUITIES

(FOUNDED 1846).

REPORT

OF THE
Museum and Muniment Committee

FOR THE YEAR ENDED 31ST MARCH, 1916.

PRICE—TWO PENCE.

COLCHESTER:
CULLINGFORD & CO.
1916.

Committee and Officers, 1915=16.

Committee :

ALDERMAN E. H. BARRITT, J.P., *Chairman.*

ALDERMAN W. G. BENHAM, J.P., *Deputy-Chairman.*

THE WORSHIPFUL THE MAYOR (COUNCILLOR A. G. ALDRIDGE).

ALDERMAN H. LAVER, J.P.

COUNCILLOR J. W. BARE.

COUNCILLOR A. M. JARMIN.

COUNCILLOR C. M. STANFORD.

*The following are not on the Council, but represent the
Essex Archæological Society.*

THE REV. J. W. KENWORTHY.

MR. PHILIP G. LAVER, F.S.A.

MR. DUNCAN W. CLARK, A.R.I.B.A.

Honorary Curator :

ALDERMAN HENRY LAVER, J.P., F.S.A.

Curator :

ARTHUR G. WRIGHT.

Assistant :

THEOBALD SMITH.

The Corporation Museum.

To the Mayor and Council of the Borough of Colchester.

GENTLEMEN,

We beg to submit our Annual Report on the Corporation Museum for the year ended 31st March, 1916.

The number of visitors to the Museum during the past year is considerably above the average, having reached the large total of 44810.

This is to a great extent due to the number of troops now stationed in Colchester and the neighbourhood, many of whom take more than a passing interest in the collections.

Your Committee are indebted to many donors for a number of valuable and interesting gifts which have been supplemented by several purchases.

By the generosity of a few "Friends of the Museum," several local implements have been added to the Stone Age Collection which were formerly in the collection of the late Rev. J. W. Kenworthy.

The Anglo-Saxon Collection has also been enriched, by exchange, by the addition of two of that rare weapon the "scramasax," found in Colchester some years ago.

All these are recorded in detail in the accompanying lists and some are illustrated by photographs specially taken by the Curator.

The work of the Museum has steadily proceeded, and your Committee desire to express their gratification at the way in which the responsible officers have carried out their duties.

ERNEST H. BARRITT, *Chairman.*

HENRY LAVER, *Hon. Curator.*

ARTHUR G. WRIGHT, *Curator.*

Visitors to the Museum, 1915=16.

				Days Open.		Attendance
April	25	...	3775
May	26	...	5835
June	26	...	5759
July	27	...	4380
August	26	...	7046
September	26	...	3790
October	26	...	2301
November	26	...	1772
December	26	...	2266
January	26	...	3009
February	25	...	2167
March	27	...	2710
				—		—
<i>Total</i>				312	...	*44810

BANK HOLIDAY ATTENDANCES.

Easter Monday, 5th April	883
Whit Monday, 24th May	1686
August Monday, 2nd August	1109
27th December	613

* The total number of Visitors for the year ending March 31st, 1903, was 20,887 ;
 1904, was 27,039 ; 1905, was 28,408 ; 1906, was 29,588 ; 1907, was 31,078 ;
 1908, was 30,875 ; 1909, was 29,842 ; 1910, was 34,453 ; 1911, was 29,423 ;
 1912, was 27,298 ; 1913, was 32,149 ; 1914, was 29,564 ; 1915, was 49,689.

The Colchester Museum

IS OPEN DAILY FROM

1st April to 30th September—10 a.m. till 5 p.m.

1st October to 31st March—10 a.m. till 4 p.m.

AND CLOSED ON

Sundays, Good Friday, and Christmas Day, and such other days as the Committee may order.

ADMISSION FREE.

It is urgently requested that any discovery of Archæological interest in the neighbourhood may be brought to the notice of either the Chairman, Honorary Curator or the Curator as early as possible.

The Curator will be pleased to give any information in his power and may be seen daily, Museum engagements permitting.

Postcards of many of the most important antiquities may be obtained in the Museum at One Penny each.

Curator ... ARTHUR G. WRIGHT.

List of Additions to the Museum

BY GIFT AND PURCHASE.

From 1st April, 1915, to 31st March, 1916.

All the objects were found in Colchester unless otherwise stated.

STONE AND BRONZE AGES.

Flint Scraper found on surface of a field near Lexden.
Neolithic. Donor, Lance-Corporal F. N. Roberts.

3252.15

Sixteen small worked flint flakes, borers, etc., found in
neighbourhood of Shoeburyness by the donor. Neolithic.
Donor, Quarter-Master Sergeant J. J. Gurnett.

3300.15

Hammer-head of Stag's Horn with oval perforation for
handle $1\frac{1}{4}$ in. \times $\frac{7}{8}$ in., dredged from the Thames at Grays,
Essex. Length, 5 ins. Neolithic. Donor, Mr. W. C.
Wells.

3304.15

For descriptions and illustrations of similar hammers made from the
antlers of the Red Deer, see Greenwell, *British Barrows*, pp. 43, 217, 390,
Mortimer, *Burial Mounds of East Yorkshire*, pp. 28, 72, plates viii, xviii.

Axe or adze of flint, stained ochreous brown, roughly
chipped and with cutting edge formed by junction of
two facets. Length, 7 ins. Found at Stanway. Early
Neolithic. Purchased.

3313.15

See Evans, *Ancient Stone Implements*, p. 68, fig. 13.

Portion of a Flint Knife, formed from a large flake beauti-
fully worked on one face to a sharp point, with milk
white porcellaneous patina. Present length, $3\frac{1}{2}$ ins.
Found on surface at Notley Hill, Braintree. Donor,
Mrs. J. W. Kenworthy for inclusion in the Kenworthy
Collection.

3327.15

Large Axe of flint, finely chipped, with orange red patina.
Length, $8\frac{1}{2}$ ins. Found at Coggeshall. Neolithic.
Purchased.

3342.15

Polished Axe of grey flint, with oblique cutting edge and sides slightly rounded by grinding. Length, $5\frac{5}{8}$ ins. Found at Kelvedon. Late Neolithic. Purchased.

3343.15

Polished Axe of grey flint of similar type; the cutting edge has been reduced by an early break and re-ground at fracture. Length, $5\frac{1}{4}$ ins. Found at Kelvedon. Late Neolithic. Purchased.

3344.15

Axe of grey flint, carefully chipped, with cutting edge and sides ground and polished. Length $5\frac{1}{4}$ ins. Found at Kelvedon. Purchased.

3345.15

Axe of grey flint, chipped all over, with oblique cutting edge. Length, $4\frac{1}{2}$ ins. Found at Kelvedon. Early Neolithic.

3346.15

Ovate Implement of ochreously stained flint, point slightly damaged. Length, $5\frac{1}{8}$ ins. Found at Ilford. Palæolithic. Purchased.

3347.15

Pointed Implement of flint, with blue and buff mottled surface. Length, 4 ins. Found at Broomhill, Rochford, Essex. Palæolithic.

3348.15

Ovate Implement of cherty flint, formed from a large flake. Length, $3\frac{1}{8}$ ins. Found in Notley Road Pit, Braintree. Palæolithic.

3349.15

Large Flint Flake, with lustrous brown surface and remains of original crust on edges, probably a scraper. Length, 3 ins. Found in Hunnable's Pit, Braintree. Palæolithic.

3350.15

Flint Flake, with mottled lustrous surface and portion of original crust. Length, $2\frac{7}{8}$ ins. Found at Pond End, Braintree. Palæolithic.

3351.15

Small Ovate Implement formed from a piece of Hertfordshire conglomerate (Pudding Stone). Length, $2\frac{7}{8}$ ins. Found in Notley Pit, Braintree. Palæolithic. Purchased.

3352.15

Implements of this material are very rare and none is recorded in Evans, *Ancient Stone Implements*

The above eleven implements. Nos. 3342 to 3352, were purchased from the Collection of the late Rev. J. W. Kenworthy by a small fund contributed by a few friends of the Museum.

Small Knife-dagger of bronze, much worn and corroded, the broad flat base perforated for two rivets by which it was secured to its handle after the manner of the example figured by Evans, *Ancient Stone Implements*, Fig. 280. Present length, 4ins. Found in Rayne Road, Braintree. Early Bronze Age. Donor, Mrs. J. W. Kenworthy, for inclusion in the Kenworthy Collection.

3353.15

Two Plaster Casts of the flint knife found in the lower bed of the so-called Lake-Dwelling at Skitts Hill, Braintree (see *Essex Naturalist*, Vol. XI.). Donor, Mrs. J. W. Kenworthy, for inclusion in the Kenworthy Collection.

3358.15

Long pointed flake of translucent brown flint with glossy surface, one face faceted and edges near butt slightly chipped or battered. Length, $6\frac{1}{2}$ ins. Found in the Churchyard, Tiptree, 1881. Late Palæolithic (?). Donor, Mrs. J. W. Kenworthy.

3359.15

For description of similar long, fine flakes, see *Proceedings, Prehistoric Society of East Anglia*, vol. I., p. 219.

Three roughly chipped implements of flint, one a pointed ovate, found in Braintree. Palæolithic (?). Donor, Mrs. J. W. Kenworthy, for inclusion in the Kenworthy Collection.

3360.15

Six Pigmy Flint Implements found in Yorkshire, from the collection of the late Rev. Reginald A. Gatty, LL.B. Donor, Mrs. Florence E. Gatty.

3365.15

Knife-dagger of brown flint, beautifully worked. Length, 5ins. Found in Essex, exact locality not known. Late Neolithic. Purchased.

3372.15

Polished Axe of greenstone, the cutting edge ground flatter on one side owing no doubt to a flaw in the stone. Length, 4ins. Found near Romford. Late Neolithic or Early Bronze Age. By Exchange.

3391.16

Compare Evans, *Ancient Stone Implements*, fig. 70.

Polished Axe of stone, of a thin flat type with rounded sides, slightly broken at butt end. Length, $5\frac{3}{8}$ ins. Found near Stratford, Essex. Late Neolithic. By Exchange.

3392.16

Cutting End of a polished Axe of sandstone, roughly reworked at fracture to form a butt. Length, $3\frac{1}{4}$ ins. Found near Barking. Late Neolithic. By Exchange.

3393.16

Butt End of a narrow polished Axe of sandstone reworked at fractured end. Length, $3\frac{1}{4}$ ins. Found near Grays. Late Neolithic. By Exchange.

3394.16

Scraper of flint, made from a curved ridged flake neatly worked to a semi-circular edge at one end. Length, $2\frac{1}{2}$ ins. Dredged from Thames at Grays. By Exchange.

3395.16

Model of Cinerary Urn of Late Bronze Age. Found at Dedham. Height, $14\frac{3}{4}$ ins. Donors, Messrs. James Carter & Co.

3399.16

The model is nearly full size. The original urn, now in the possession of Messrs. James Carter & Co., the well-known seedsmen, belongs to the class known as the Overhanging Rim type dating about 900 B.C. It was inverted over a cremation burial. Other urns were found at the same time but were inadvertently destroyed.

Polished Axe of cherty grey flint with deep brown patina; the sides slightly rounded by grinding. Length, 7 ins. Found at Stanford-le-Hope. Late Neolithic or Early Bronze Age. Donor, Dr. Frank Corner, F.G.S.

3405.16

Polished Axe of Basalt (?) with rounded sides and slightly oblique cutting edge. Length, 5 ins. Found in marsh near Barking. Late Neolithic or Early Bronze Age. Purchased.

3409.16

Chipped Axe of grey flint with brown patina; the pointed cutting edge is formed by the intersection of two facets. Length, $4\frac{3}{4}$ ins. Found in Epping Forest. Early Neolithic. Purchased.

3410.16

Small Axe, or chisel, of roughly chipped grey flint with olive brown patina. Length, $3\frac{3}{4}$ ins. Dredged from Thames, near Tilbury. Early Neolithic. Purchased.

3411.16

Flint Nodule, with natural hole, roughly chipped to form a hammer or mace head. Found in gravel brought from Stanway pit. Donor, Mr. F. Farman.

3412.16

Half of an ovate flint implement with highly glazed ochreous patina. Found near G.E.R. Station, Walthamstow. Palæolithic. Donor, Mrs. J. W. Kenworthy.

3413.16

EARLY IRON AGE (LATE-CELTIC).

Small Vase of polished brown ware with everted brim and girth grooves at base, beaded foot ornamented on base with concentric grooves and pellet. Slightly restored. Height, $3\frac{9}{16}$ ins. Found on Lexden Park Estate. Late-Celtic. Donor, Mr. Vernon E. Marshall. (*Plate I.-1.*)

3419.16

Body of Pot of similar form, neck wanting, of thin brown ware with fine horizontal tooling on sides, chamfered base. Found with No. 3419. Late-Celtic. Donor, Mr. Vernon E. Marshall.

3420.16

The approximate date for these vessels is between 25 B.C. and 35 A.D.

ROMANO-BRITISH PERIOD.

Large globular Amphora (*Seria*) of buff ware. Found near Plum Hall. Roman period. Purchased.

3245.15

A similar example is figured in *Annual Report*, 1909-10, plate V.

Three Tiles, $16\frac{1}{2}$ ins. \times $11\frac{3}{4}$ ins. \times $1\frac{1}{2}$ ins. Found near above. Roman.

3246.15

Two fragments of "Samian" Bowls (Form 29), one with decoration as Knorr, *Rottweil*, 1912, pl. V. 20, where it is assigned to middle of 1st Century. Base fragment of "Samian" platter (Form 16). Base fragment of ditto (Form 18). Base fragment of cup (Form 27) with potter's stamp, **OF AQVIT**, Aquitanus, a potter of the Claudian-Neronic period. Donor, the Hon. Curator, Alderman Henry Laver, F.S.A.

3249.15

Fragment of hard grey ware with impressed herring-bone and dot ornament. Found in donor's garden. 1st Century, A.D. Donor, Mr. J. Murray.

3259.15

Cinerary Urn of hard grey ware with narrow everted brim and broad zone of indented dots between girth grooves. Carefully finished base with concentric circles. Contains burnt bones. Height, $5\frac{9}{16}$. Diameter $4\frac{4}{16}$. 1st Century, A.D. Purchased. (*Plate I.-2.*)

3279.15

Circular object of buff ware with cone-shaped projection on side. The circular portion has an eight-petalled flower within concentric circles in relief. Probably a stamp for forming the tops of lamps. A similar design is to be seen on a lamp in the Joslin Collection, Burial Group, No. 32. Diameter, $1\frac{1}{4}$ in. Thickness, $\frac{7}{16}$ in. Found at Stanway. Purchased.

3301.15



LATE-CELTIC AND ROMANO-BRITISH POTTERY.

From a Photograph by the Curator.



PEDESTALLED CUP (*Cantharus*).

From a Photograph by the Curator.

- Bronze Loop with ring, from a Scale Beam. Roman. Purchased. 3302.15
- Iron Trowel found in excavation for new gas main in High Street, 1915. Roman. Donor, Mr. W. Meaden. 3306.15
- Iron Nail with cusped head. Length, $3\frac{5}{8}$ ins. Found in donor's garden in Lexden. Roman. Donor, Mr. Harrington Lazell. 3308.15
- Small Unguent Pot of buff ware with small foot; sides ornamented with girth grooves. Imperfect. Found at Lexden. Purchased. 3314.15
- Small Olla of rough cast ware with painted brown exterior. Height, 3 ins. Found at Lexden. 1st Century, A.D. Purchased. (*Plate I.-3.*) 3315.15
- Ornamented base of Tazza of buff ware. Imperfect. Found at Lexden. Purchased. 3316.15
- Two-handled Pedestalled Cup (*Cantharus*), Form 53, of brick red ware with burnished surface. The trumpet-shaped mouth has a turned over brim indented along lower edge; the straight stem has a collar moulding and the foot a beaded edge with concentric groove on base. Height, $6\frac{1}{2}$ ins. Found on St. John's Green. Roman period. Donor, Mrs. J. W. Kenworthy. (*Plate II.*) 3325.15
- For remarks on this type of vessel see May, *Roman Pottery in York Museum*, p. 83, plate xx., 1.
- Nine fragments of wares from a Roman rubbish pit, including portion of strainer and two pieces of painted red ware with tooled and rouletted ornamentation. Found at Shoeburyness. Probably 2nd Century, A.D. Donor, Major K. E. Haynes, R.A. 3326.15
- Fragment of rim of Mortar of buff ware, with portion of potter's stamp in two lines. Found in Hospital Lane. 1st Century, A.D. Donor, Mrs. J. W. Kenworthy. 3328.15
- Four fragments of pottery with various decorations. Found at Shoebury. 1st Century, A.D. Donor, Quartermaster-Sergeant J. J. Gurnett, R.A. 3371.15

Fragment of top of small vessel of black ware, probably an inkstand, with raised beading and concentric circles; in the centre a small circular opening. Found in donor's garden. Roman period. Donor, Mr. Alfred Asten. 3380.15

Portion of "Samian" Bowl (Form 81), with potter's stamp **DIVICATVS** obliquely across rim. Donor, Dr. Philip G. Laver, F.S.A. 3414.16

Divicatus was a potter of Lezoux of the Antonine period.

ANGLO-SAXON PERIOD.

Iron Sword Blade with shallow groove down centre, tang imperfect. Length (including tang, $2\frac{3}{4}$ ins.) 29 ins. Width, 2 ins. Found in river at Colchester about 1880. Probably Danish, 9th Century. By Exchange. (*Plate III.*) 3388.16

Similar Swords found in the Thames, are described by C. Roach Smith, *Catalogue of London Antiquities*, p. 100, No. 534, etc., and in Denmark by Engelhardt, *Denmark in the Early Iron Ages*.

Iron blade of Scramasax with thick back and tapering curved point. Length (including tang, $4\frac{3}{4}$ ins.) $24\frac{1}{2}$ ins. Width, $2\frac{1}{8}$ ins. Found in river at Colchester about 1880. Saxon, 7th or 8th Century. By Exchange. (*Plate III.*) 3389.16

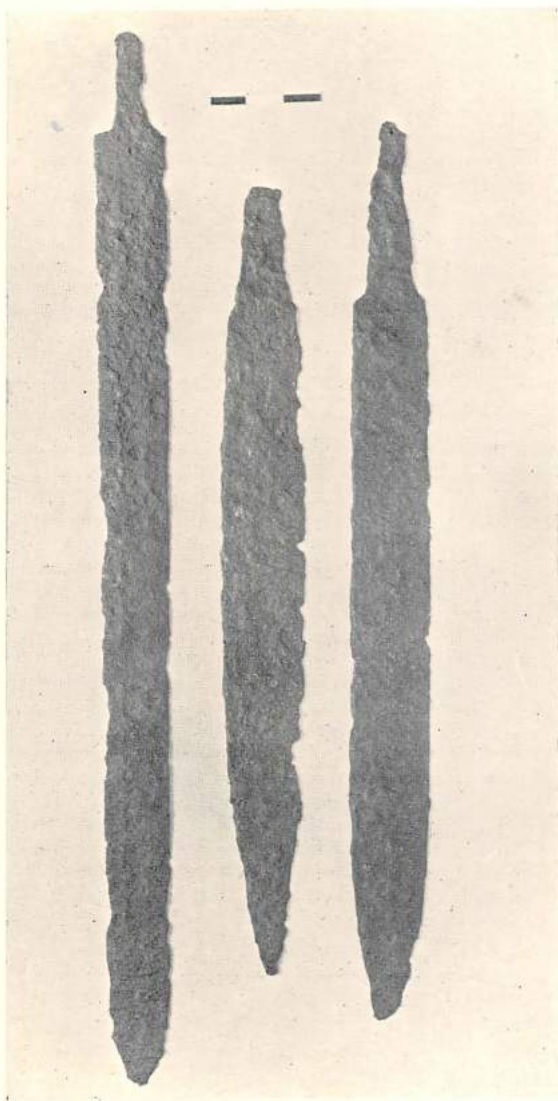
Iron blade of Scramasax, similar to the above but rather more curved on back. Length (including tang, $3\frac{1}{4}$ ins.) $21\frac{1}{2}$ ins. Width in centre, $2\frac{1}{4}$ ins. Found in river at Colchester about 1880. Saxon, 7th or 8th Century. By Exchange. (*Plate III.*) 3390.16

For a valuable and interesting account of the Scramasax, see Professor Baldwin Brown, *The Arts in Early England*, vol. iii., pp. 225-231, plate xxviii., where it is stated that this weapon "in its fully developed form * * * is of very rare occurrence in England."

Skull, with lower jaw, of adult male. Found at Clacton, Anglo-Saxon. Donor, Mr. J. Quilter. 3428.16

MEDIEVAL AND LATER PERIODS.

Two Bellarmine, or Ale Jugs, of glazed stoneware, one with mask and medallion, the other plain. Both are encrusted with casts of marine worms, etc. Dredged up off Brightlingsea. 16th-17th Century. Purchased. 3238.15



SWORD AND SCRAMASAXES.

From a Photograph by the Curator.

- Neck of Bellarmine with fine mask and unusual white interior glaze. 16th Century. Donor, Mrs. Adelaide Cater. 3247.15
- Carved bone Wafer Seal, baluster pattern, surmounted by a closed hand. Early 19th Century. Donor, Mrs. Adelaide Cater. 3248.15
- Bronze Handle of Spoon, date uncertain; Bowl of Tobacco Pipe, early 18th Century. Donor, the Hon. Curator, Alderman Henry Laver, F.S.A. 3250-3251.15
- Pair of Handcuffs used by the donor's father when a Special Constable. Donor, Mr. George Page. 3272.15
- Wrought iron fastening for Gun Rack. 18th Century. Purchased. 3276.15
- Metal Badge for cap of the 16th Essex Rifle Volunteers; the county arms on a shield within an inverted band on a star surmounted by a crown. Purchased. 3277.15
- Plated Button, shank wanting, of Loyal Colchester Volunteers. Donor, Mr. W. B. Plant. 3278.15
- Iron two-pronged Dumpling Fork, late 18th Century. Donor, Mr. George Page. 3285.15
- Large Bellarmine or Ale Jug of brown stone ware, with mask on neck and three indented rosettes on bulge. Height, 17ins. 17th Century. Donor, Miss Mary Josselyn Page. 3286.15
- Small Bottle of greenish blue glass, with wide flanged lip and pointed "kick." Height, $3\frac{1}{4}$ ins. Found on Hythe Hill. 16th Century. Donor, Mr. Duncan W. Clark, A.R.I.B.A. 3288.15
- Long Phial of greenish glass, with tapering neck, $2\frac{1}{4}$ ins. long, moulded brim; base wanting. Present length, $7\frac{7}{8}$ ins. Found at Rowhedge. Date uncertain. Donor, Mr. Walter Clark. 3289.15
- Taper of dark blue wax, coiled in form of a cone on three feet; ornamented with raised flowers in colours and gilt. Early 19th Century. Donor, Mrs. Adelaide Cater. 3293.15
- Iron Key, with oval bow and perforated web, from Marquis of Granby. 18th Century. Donor, Mr. J. W. Bather. 3305.15

Belt Plate, copper gilt, of the Writtle Loyal Volunteers ; engraved with Royal Crown and garter upon a star ; within the garter, which is inscribed Writtle Loyal Volunteers, are the Essex arms,—three seaxes. 3ins. \times 2 $\frac{1}{4}$ ins. Purchased. 3303.15

The Company of Loyal Writtle Volunteers was formed in 1803, and became absorbed in the Local Militia 1807-8. The officers were Captain John Rowland Berkeley (in command) ; Lieutenants, James William Porter and George Parr ; and Ensigns, Thomas Lucking and Joseph Lucking.

Iron Key, with reniform bow and indented web. 14th Century. Donor, the Hon. Curator, Alderman Henry Laver, F.S.A. 3309.15

Japanned Box of tin for wax matches, in common use thirty years back. Purchased. 3310.15

Antique Iron Coffee Mill, handle wanting, from an old house at Kelvedon. 18th Century. Purchased. 3311.15

Guinea Scales and Weights in oval japanned metal case. The weights bear the date 1717. Donor, Mr. C. H. Hills. 3322.15

Goffering Iron with baluster stem on three legs. From an old house in Kelvedon. 18th Century. Purchased. 3333.15

Brass Stamp in mahogany handle, "Essex Rifles Reading Room." Donor, Mr. Miller Winch. 3337.15

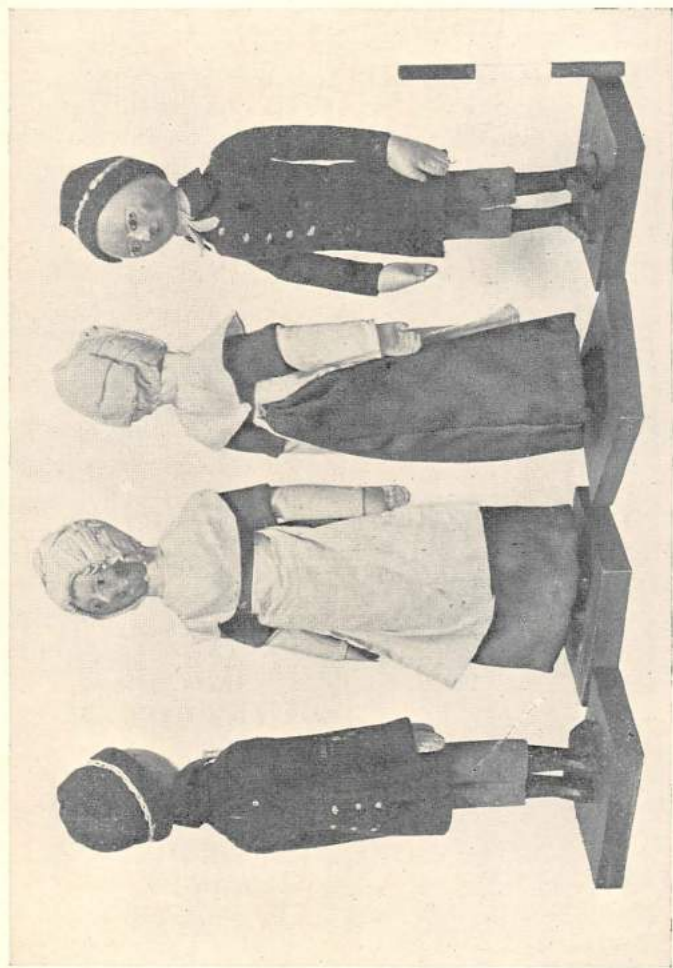
Piece of Carved Oak Moulding from an old house at Braintree. 16th Century. Donor, Mrs. J. W. Kenworthy. 3354.15

Small Punch Ladle of pear or apple wood, found in the walling of an old house in New Street, Braintree. 18th Century. Donor, Mrs. J. W. Kenworthy. 3355.15

Two pronged iron Table Fork, with horn handle. Early 17th Century. Donor, Mrs. J. W. Kenworthy. 3356.15

Civic Mace of the Braintree Select Vestry, consisting of a tube of brass surmounted by the Royal Crown, staff wanting. Length 6ins. Donor, Mrs. J. W. Kenworthy. 3357.15

Large Ale Jug of brown stoneware, with the figure 2 stamped on shoulder (2 gallons ?) Height, 14 $\frac{1}{4}$ ins. English, early 18th Century. Donor, Mr. J. Bird. 3363.15



DUTCH DOLLS IN COLCHESTER BLUE SCHOOL COSTUMES.

From a Photograph by the Curator.

Pointed Jar of red ware covered with pale buff slip, no handles, slightly corrugated near base. Height, 15ins. 17th Century. Donor, Mr. J. Bird. 3364.15

Life Preserver, with whalebone handle, said to have been found in Felstead Church. Length, 13ins. 18th Century? Donor, Mrs. J. W. Kenworthy. 3375.15

A number of fragments of Medieval Pottery, including handles, bases, etc., of Jugs of coarse red ware, found during excavations by Mr. Miller Christy and Mr. Francis W. Reader, on behalf of the Morant Club, on the site of a Medieval Pottery at Mill Green, Ingatestone, 1914. Donors, The Morant Club. 3384.15

The excavations and finds are fully described in a Report by the Morant Club which appears in the *Trans. Essex Archl. Society*, N.S. vol. xiv. The specimens there figured are included in the above gift. See also *op. cit.* N.S. vols. ii. and xii., and *Essex Naturalist*, vols iii., vi and xvii.

Large Bell Metal Mortar with Iron Pestle. The mortar has a moulded brim and base, round the former is a narrow band, $\frac{7}{8}$ in. wide, of relief ornamentation with initials and date, **T.G. 1684**; round the waist is a broader band of relief ornament, $2\frac{1}{4}$ ins. deep. Height, $11\frac{3}{8}$ ins., diameter at mouth, $14\frac{3}{8}$ ins., length of pestle, $26\frac{3}{8}$ ins. Purchased. 3396.16

Portion of Lead Piping with pear-shaped section and banded joint, found in foundations at St. Osyth's Priory. 11th or 12th Century. Donor, Mr. R. J. Steggles. 3401.16

Six Fire Insurance Signs in copper and lead from various Essex localities. The offices are Atlas, County, Imperial, Royal, Royal Exchange, and Sun. Bequeathed by the late Mr. Charles Thompson, of Clapton. 3403.16

Iron Bill-hook, for left-handed worker, about 90 years old. Donor, the Assistant, Mr. T. Smith. 3429.16

COINS, TOKENS, MEDALS.

Farthing, William III., 1831, in fine state. Donor, Private of 6th Warwick Regiment. 3254.15

Tower Groat, Henry VIII. Mint mark, fleur-de-lys. Fine state (Hawkins, pl. XXX. 396). This second coinage of Henry was struck in his 18th year. Donor, Mr. John Smith. 3258.15

- Farthing, William and Mary, 1694. Donor, Private G. McCormick, Middlesex Regiment. 3307.15
- A collection of thirty-three Essex Trade and other Tokens found at Braintree and collected by the late Rev. J. W. Kenworthy, sometime Vicar of that town. Donor, Mrs. J. W. Kenworthy, for inclusion in the Kenworthy Collection. 3331.15
- Denarius of Commodus (A.D. 180-192). *Rev.* **PM.TRP. XIII.IMP.VIII.COS.V.PP.** Purchased. 3332.15
- "First Brass" of Faustina junr., wife of Marcus Aurelius (died 175 A.D.). *Obv.* **FAVSTINA AVGVSTA** *Rev.* **Matri Deum** type, Cybele seated between two lions. *Ex.* S.C. Found at West Mersea. Donor, Mr. W. S. Draycott. 3335.15
- Fourpenny bit, William III., 1836. Donor, Mr. James T. Hall 3339.15
- Six Roman coins, including three of Tetricus; one, **DIVO CLAUDIO**; and two *minimi*. Donor, Mr. A. E. Purkiss. 3341.15
- Silver Medal to commemorate the laying of the first stone of the Colchester National Central Schools on May 21, 1861. Engraved on rim "Presented to James Inglis, Esq." Donor, Major T. D. Inglis. 3367.15
- Silver denarius of Republican era of Rome. Donor, Mr. W. Hum. 3379.15
- Half Farthing, Victoria, 1843. Donor, Mrs. J. Reynolds. 3382.15
- Shilling, George I., 1723, with S.S.C. (South Sea Coy.) in angles of cross on reverse. Found at Castle Hedingham. Purchased. 3386.16
- Silver denarius, Severus Alexander (A.D. 222-235). *Obv.* **IMP C M AVR SEV ALEXAND AVG.** *Rev.* **PM TR P II COS PP.** Donor, Mr. A. E. Purkiss. 3406.16

PRINTS, MAPS, PHOTOGRAPHS, AND PRINTED MATTER.

- Set of six Maidstone Museum Picture Postcards. Donor,
Mr. J. H. Allchin. 3267.15
- Three receipted accounts of Hedge and Younghusband,
Colchester, 1782-90, and John Payne, Maldon, 1787.
Letter dated 1787 to Mr. Isaac Brown at the Farm,
Colne Engaine. Donor, Mr. R. W. Mason. 3273.15
- Portfolio of illustrations with letterpress from the *Art
Journal* of various antiquities. Donor, the Curator,
Mr. A. G. Wright. 3294.15
- Four Mounted Photographs of 16th or 17th Century Vessels
in the Rotterdam Museum. Donor, Mrs. J. W. Ken-
worthy. 3374.15
- Photograph of Handbill advertising Hertner's Eupyrion, a
new method of obtaining a light. Donor, Mr. Miller
Christy, F.L.S. 3383.15
- The Prince's Album of Colchester*, a set of eight lithographic
views in imitation cloth cover stamped in gold. Pub-
lished by Rock & Co., London, 1875. Donor, Councillor
A. M. Jarmin. 3397.16
- Photograph of Late-Celtic Vessels found at Wisley, Surrey.
(*Surrey Arch : Collections*, Vol. XXIV., pl. 53). Donor,
Dr. Eric Gardner. 3407.16

DEPOSITED.

- Iron Hake or Pot Crane from an old house at Kelvedon.
Deposited by Mr. W. C. Wells. 3292.15
- Officer's Crossbelt Plate, engraved with the Arms of Essex
surmounted by a crown. Deposited by Mr. W. C.
Wells. 3312.15
- These plates were worn by Officers of the Local Militia which was formed
from Volunteer Regiments in 1807 and disbanded in 1816.
- Five Dutch Dolls, dressed in the costumes of the boys and
girls of the Blue Schools, Colchester, by Mrs. William
Mason, the great-grandmother of the depositor, about
1830-1850. Deposited by Major T. D. Inglis. (*Plate IV.*)
3366.15

Museum Library.

- Manchester Museum Publication, No. 75. Donor, Dr. W. M. Tattersall, Keeper. 3235.15
- The Gentleman's Magazine Library. Romano-British Remains. Parts 1 and 2. 2 Vols. Donor, Mr. Will C. Priestley. 3237.15
- A Hoard of Samian Ware from Pompeii. By Donald Atkinson. (Reprint). Donor, the Author. 3241.15
- British Numismatic Journal. First Series. Vol. X., 1913. By Subscription. 3242.15
- James Green of Leytonstone. By H. W. Lewer, F.S.A. Donor, the Author. 3243.15
- Catalogue of Anthropological Collection. Parts 1 and 2. 1 Vol. By Colonel Lane Fox, 1887. Donor, the Curator, Mr. A. G. Wright. 3244.15
- Report of Research Committee of the Society of Antiquaries of London. No. III. Excavations at Hengistbury Head, Hampshire, in 1911-12. Donor, Mr. Thomas May, F.S.A. (Scot.). 3255.15
- The opening of a Tumulus near Pickering. By John L. Kirk, B.A., etc. (Reprint). Donor, the Author. 3256.15
- The Romanization of Roman Britain. By F. Haverfield. Third Edition, 1915. Purchased. 3261.15
- Belfast Museum Publication, No. 49. Donor, Mr. Arthur Deane. 3265.15
- The British Academy Supplemental Papers. III. Roman Britain in 1914. By Professor F. Haverfield. Donor, the Author. 3266.15
- Flints. By T. McKenny Hughes, M.A., F.R.S., etc. (Reprint). Donor, the Author. 3269.15
- The Game of Knuckle Bones. By Edward Lovett. Donor, the Author. 3270.15
- Catalogue of the Antiquities in the Norwich Castle Museum, 1909. Donor, the Curator, Mr. A. G. Wright. 3271.15

- Remains of Pagan Saxondom. By J. Yonge Akerman.
Parts I.-IX. London, 1852-3. Donor, Mr. Will C.
Priestley. 3275.15
- Prehistoric Society of East Anglia. Report on the Excava-
tions at Grime's Graves, Weeting, Norfolk, 1914.
Purchased. 3280.15
- Cambridgeshire War Dykes and the Icknield Way. By
Robert Stephenson. Donor, the Author. 3283.15
- The Journal of Roman Studies. Volume IV., part 2, 1914.
By Subscription. 3286.15
- First Supplementary Catalogue of Lantern Slides in the
Joint Collection of the Societies for the Promotion of
Hellenic and Roman Studies. By Subscription.
3287.15
- Amber and Jet in Ancient Burials. By Nona Lebour.
(Reprint). Donor, the Author. 3290.15
- On the Dating of Glass Wine Bottles of the Stuart Period.
By E. Thurlow Leeds, F.S.A. (Reprint). Donor, the
Author. 3297.15
- Notes on Examples of Late Anglo-Saxon Metal Work. By
E. Thurlow Leeds, B.A., F.S.A. (Reprint). Donor, the
Author. 3298.15
- The Church Plate of the Newport and Stansted Deanery,
Essex. By G. Montagu Benton, M.A., and John G.
Geare, M.A., R.D. (Reprint). Donor, the Rev. G.
Montagu Benton. 3318.15
- Problems of Coast Erosion. Brighton's Lost River. Token
Money in Croydon. By Edward A. Martin, F.G.S.
(Reprints). Donor, the Author. 3319-3321.15
- Essex Naturalist. Vol. XVIII., parts 1-6. Donors, the
Council of the Essex Field Club 3323.15
- Notes on a Collection of very minute Flint Implements from
Scunthorpe, Lincolnshire. By the Rev. Reginald A.
Gatty, LL.B. (Reprint). Donor, Mrs. Florence E. Gatty.
3329.15
- Hunsbury or Danes Camp and the Discoveries there. By
Sir Henry E. L. Dryden, Hon. Member, Society of
Antiquaries of Scotland. (Reprint). Purchased.
3330.15

- Congress of Archæological Societies, 1915. Report of the Committee on Ancient Earthworks, etc. Donor, Mr. Albany F. Major, Hon. Sec. 3334.15
- Proceedings of the Prehistoric Society of East Anglia for 1912-13. Vol. II., part 1. By Subscription. 3340.15
- Description of the Tumulus opened at Gristhorpe, near Scarborough. By W. C. Williamson, F.R.S. 3rd Edition, 1872. Donor, Mrs. J. W. Kenworthy. 3361.15
- Excavation of the Site of a Medieval Pottery at Mill Green, Ingatestone. By Miller Christy and Francis W. Reader. Report by the Morant Club, 1915. (Reprint). By Subscription. 3362.15
- British Barrows. By William Greenwell, M.A., F.S.A. Oxford, 1877. Purchased. 3368.15
- Hull Museum Publication, No. 103. Donor, Mr. T. Sheppard, F.G.S., etc. 3369.15
- Art of the Stone and Bronze Ages. By Nona Lebour. Donor, the Author. 3370.15
- Three Volumes of Cuttings and Sketches, etc., of Archæological subjects. 4to. Donor, the Curator, Mr. A. G. Wright. 3373.15
- Acoustic Vases in Churches traced back to the Theatres and Oracles of Greece. By T. McKenny Hughes, M.A., F.R.S., F.G.S., F.S.A. (Reprint). Donor, the Author. 3377.15
- On some objects found in the King's Ditch under the Masonic Hall. By T. McKenny Hughes, M.A., F.R.S., F.S.A. (Reprint). Donor, the Author. 3378.15
- Roman and Mediæval Discoveries in London. Described by Mr. Frederick Izant, Surveyor. Folio, illustrated. (Reprint). Donor, the Author. 3381.15
- Submerged Forests. By Clement Reid, F.R.S. Cambridge, 1913. Purchased. 3385.16
- The Journal of Roman Studies. Volume V., part 1, 1915. By Subscription. 3400.16
- Société Préhistorique Française. Rapports LXIII.-LXVII., 1913-14. Donor, Dr. Adrien Guébard, L.S.M., L.S.P. 3402.16

- Sur la VI^e Année d'Activité de la Commission d'Etude des Enceintes Préhistoriques, par M. Armand Viré, Dr.Sc., 1913. Donor, Dr. Adrien Guébard, L.S.M., L.S.P. 3402.16
- Sur une petite mais importante amélioration à apporter aux signes de la "Légende paléœthnologique internationale," par Dr. Adrien Guébard. Donor, the Author. 3402.16
- Applications Nouvelles de la Radiographie à l'Histoire Naturelle, par Dr. Adrien Guébard, L.S.M., L.S.P. Donor, the Author. 3402.16
- On a Strange Object from a Bronze Age Interment in Essex. By Miller Christy. (Reprint). Donor, the Author. 3415.16
- General Guide to the Collections in the Manchester Museum, University of Manchester, 1915. Donors, the Museum Committee. 3418.16
- Recent Roman Discoveries in London. By Frank Lambert, M.A. (Reprint). Donor, the Author. 3416.16
- Proceedings of the Society of Antiquaries of London. Second Series. Vol. XXVII., 1914-15. Purchased. 3421.16
- The Fortifications of Roman Caerwent. By John Ward, F.S.A. (Reprint). Donor, the Author. 3422.16
- The Antiquary. Vol. LI., 1915. Purchased. 3425.16
- Spinks' Numismatic Circular. Vol. XXIII., 1915. By Subscription. 3426.16
- The Museums Journal. Vol. 14, 1914-15. By Subscription. 3427.16
- Prehistoric Art. By E. A. Parkyn. Donor, Mr. F. J. Bennett, F.G.S. 3430.16

Reports

RECEIVED TO MARCH 31, 1916.

Belfast, Public Art Gallery and Museum.
 Brighton, Public Library and Museum.
 Bristol, Museum and Art Gallery.
 Bury St. Edmunds, Moyses Hall Museum.
 Cambridge, Fitzwilliam Museum.
 Cambridge, Friends of the Fitzwilliam Museum.
 Cambridge, University Library.
 Cardiff, The National Museum of Wales.
 Chester, Society of Natural Science, etc.
 Doncaster, Art Gallery and Museum.
 Dundee, Free Library and Museum.
 Edinburgh, Royal Scottish Museum.
 Glasgow, Museums and Art Gallery.
 Ipswich, Borough Museums and Free Library.
 Liverpool, Free Public Libraries and Museum.
 Liverpool, University Institute of Archæology.
 London (C.C.), Horniman Museum and Library.
 Manchester, University Museum.
 New York, American Museum of Natural History.
 Norwich, Castle Museum.
 Oxford, Ashmolean Museum.
 Rochdale, County Borough Museum, etc.
 Saffron Walden, Literary and Scientific Institution.
 Salisbury, South Wilts and Blackmore Museums.
 Spalding, Gentlemen's Society.
 Stockport, County Borough Museum, etc.
 Stratford-on-Avon, Shakespeare's Birthplace.
 Sydney, N.S.W. Technological Museum.
 Warrington, County Borough Museum.
 Washington, U.S.A., National Museum.

*N B.—Curators of Museums will much oblige by forwarding
 their Reports in exchange as issued.*

List of Donors.

Allchin, J. H. (Maidstone).
 Asten, Alfred.
 Atkinson, Donald (Reading).
 Bather, J. W.
 Bennett, F. J.
 Benton, Rev. G. Montagu (Saffron Walden).
 Bird, J. (Lexden).
 Carter, James & Co. (Raynes Park).
 Cater, Mrs. Adelaide.
 Christy, Miller (Chignal St. James).
 Clark, Duncan W.
 Clark, Walter (Halstead).
 Corner, Dr. Frank (London).
 Deane, A. (Belfast).
 Draycott, W. S. (West Mersea).
 Essex Field Club, Council of (Stratford).
 Farman, F.
 Gardner, Dr. Eric (Weybridge).
 Gatty, Mrs. Florence E. (Walthamstow).
 Guébhard, Dr. Adrien (France).
 Gurnett, Q.M.-Sergt. J. J. (Shoeburyness).
 Hall, James T. (Lowestoft).
 Haverfield, Prof. F. (Oxford).
 Haynes, Major K. E. (Shoeburyness).
 Hills, C. H. (Belstead).
 Hughes, Prof. T. McKenny (Cambridge).
 Hum, W.
 Inglis, Major T. D.
 Izant, Frederick (London).
 Jarmin, Councillor A. M.
 Kenworthy, Mrs. J. W.
 Kirk, John L. (Pickering).
 Lambert, F. (London).
 Laver, Alderman H. (Hon. Curator).
 Laver, Dr. P. G.
 Lazell, H.
 Lebour, Mrs. (Corbridge).
 Leeds, E. Thurlow (Oxford).
 Lewer, H. W. (Loughton).
 Lovett, Edward (Croydon).
 Major, Albany F. (Croydon).
 Manchester Museum Committee.
 Marshall, V. E.

Martin, E. A. (Croydon).
 Mason, R. W. (Colne Engaine).
 May, T. (Crieff).
 McCormick, Private G.
 Meaden, W.
 Morant Club, The
 Murray, J.
 Page, George (Bures Hamlet).
 Page, Miss M. J. (Bures Hamlet).
 Plant, W. B.
 Priestley, Will C. (Birmingham)
 Purkiss, A. E.
 Quilter, J.
 Reynolds, Mrs. J. (Kings Lynn).
 Roberts, Lce.-Corpl. F. M. (Croydon).
 Sheppard, T. (Hull).
 Smith, John (Sudbury).
 Smith, T. (Assistant).
 Steggles, R. J.
 Stephenson, Robert (Burwell).
 Tattersall, Dr. W. M. (Manchester).
 Thompson, late Charles (Clapton)
 Ward, J. (Cardiff).
 Wells, W. C. (Sudbury, Harrow).
 Winch, Miller.
 Wright, A. G. (Curator).

Depositors.

Inglis, Major T. D.
 Wells, W. C. (Sudbury, Harrow).

FORMS OF BEQUEST.

I bequeath out of such part of my personal Estate as may by Law be bequeathed for such purposes, to the Mayor, Aldermen and Burgesses of the Borough of Colchester, the sum of

free from Legacy Duty, for the Benefit of the Corporation Museum of Antiquities, to be expended in such a way as they may deem expedient ; and I direct that the Receipt of the Treasurer for the time being of the said Borough shall be an effectual discharge for the same Legacy.

*I bequeath**

*ANTIQUITIES
OR OTHER
OBJECTS

to the Mayor, Aldermen and Burgesses of the Borough of Colchester (Free from Legacy Duty, which duty I direct shall be paid out of my pure personality), for the Benefit of the Corporation Museum of Antiquities, either for Exhibition, or for such other purposes as they may deem expedient : and I further direct that the Receipt of the Town Clerk for the time being of the said Borough shall be an effectual discharge for the same Legacy.



(REVERSE OF BOROUGH SEAL, 15TH CENTURY).

BOROUGH OF COLCHESTER.

The Colchester Museum of Local
Antiquities.

(Founded 1846.)



(OBERSE OF BOROUGH SEAL, 15TH CENTURY).

REPORT

Of the Museum and Muniment Committee

For the Two Years ended 31st March, 1918.

Price Sixpence.

Borough of



Colchester.

THE
Corporation Museum
OF
LOCAL ANTIQUITIES

**Owing to prevailing war conditions,
the Plates to illustrate this Report are
unavoidably held over.**

For the Two Years ended 31st March, 1918.

PRICE—SIXPENCE.

COLCHESTER :
CULLINGFORD & CO.
1918.

Committee and Officers.

Committee, 1916-17 :

Alderman E. H. BARRITT, J.P., *Chairman.*

Alderman W. G. BENHAM, J.P., *Deputy-Chairman.*

THE WORSHIPFUL THE MAYOR (Councillor J. T. BAILEY).

Alderman H. LAVER, J.P.

Councillor W. COATS HUTTON, J.P.

„ A. M. JARMIN.

„ C. T. GALE.

1917-18 :

Alderman W. G. BENHAM, J.P., *Chairman.*

THE WORSHIPFUL THE MAYOR (Councillor A. M. JARMIN)

Deputy-Chairman.

Alderman WILSON MARRIAGE, J.P.

Councillor COATS HUTTON.

„ C. T. GALE.

„ F. HARRIS.

„ PENRY ROWLAND, M.D.

*The following are not on the Council, but represent the
Essex Archæological Society.*

Mr. PHILIP G. LAVER, F.S.A.

Mr. DUNCAN W. CLARK, A.R.I.B.A.

Mr. HARRINGTON LAZELL.

Curator :

ARTHUR G. WRIGHT.

Assistant :

THEOBALD SMITH.

The Corporation Museum.

To the Mayor and Council of the Borough of Colchester.

GENTLEMEN,

We beg to submit our Report on the Corporation Museum for the two years ended 31st March, 1918.

The number of visitors to the Museum during the past two years has reached a very high figure; the number for 1916-17 being 46,437 and for 1917-18, 47,610 making a grand total of 94,047.

This attendance is largely due to the interest taken in the Museum by the troops stationed in Colchester and the neighbourhood and wounded soldiers.

A number of valuable and interesting additions have been made to the collections by various donors and these have been supplemented by several purchases. All are recorded in the accompanying lists and the most important are illustrated from photographs specially taken for the Report.

Your Committee are also indebted to Mrs. G. W. Dobson, Mr. W. C. Wells and Dr. Philip Laver, F.S.A., for placing on loan several very interesting exhibits.

Brief mention only can be made here of the various objects acquired by gift and purchase for the Albert Museum and Art Gallery. They will be more fully described and reported in due course. They include—

Handweaving Loom, purchased. Collection of Paintings by the late Major Bale, from the Colchester Arts Club. Portrait in oil of late Major Bale, from Mr. Frank Daniell. Cases of rare British birds, from Mr. W. A. G. Taylor. Collection of Australian Native Weapons, from Mr. Wm. J. Rogers. Early 14th Century Windows, from Messrs. Lawrence & Co. Travelling Carriage of about 1820, from Mrs. C. G. S. Reade. Collection of Nests and Eggs of Essex Birds, purchased. Collection of Shells, from Mrs. Eleanor S. Evans. Oil Painting, Flatford Mill, by Hain Friswell, by Mr. C. E. Benham on behalf of subscribers. Oil Painting by David Muirhead, from the Hon. Mr. Justice Darling. Collection of Iron Tools and Weapons, from Lea Valley, from Mr. Frank Corner. Nest of Rare Wasp, from the High Sheriff and Mrs. Courtauld. Japanese Fishing Lines, etc., from Dr. H. Laver, F.S.A. Beak of Fossil Whale, from Councillor A. M. Jarmin. Small collection of Watches and Movements of 18th and 19th centuries from Mr. Evan Roberts through Directors of Victoria and Albert Museum. A number of Sculptured Stones, from

St. Botolph's Priory, from H.M. Board of Works. Cases of Essex Birds, from Mr. C. B. Pigot. Portion of Wall Stencilling in case, from Major W. F. Dick. Antique Bonnet, from Mr. Fred Roe, R.I. Hornet's Nest, from Mr. Edgar Partridge. Specimens of Carved Woodwork, etc., from Mr. Thos. Brett Daniell. Early Victorian Teapot, from Mr. John Andrews. Pencil Drawing of Colchester Castle, 1790, from Mr. John Ward, F.S.A. Oil Painting, Portrait of Dr. Gilberd, purchased. Barrel Organ used in Workhouse Chapel, from the Guardians. Water colour drawing of Balkearne Gate, from Mrs. E. Benham. Uniforms of Officer of Essex Militia, from Mrs. Potter, etc.

During the past year further excavations at the Balkearne Gate were undertaken by Captain R. Mortimer Wheeler, R.F.A., ably assisted by two members of his battery, Gunner West and Gunner Freemantle. The result of these excavations was to throw considerable light upon several points which it was not possible to clear up in the previous excavations. Captain Wheeler's report and plan will be published in due course.

In reply to a circular letter from the Earl of Plymouth, Chairman of the Committee of the Local War Museums Association, your Committee have become members of the Association, subscribing thereto, and have appointed a Sub-Committee to consider the best means of forming a Local War Museum in Colchester.

The Roman and Saxon antiquities from the site of the Roman Station of Othona, afterwards the Saxon Ithan-ceaster, at Bradwell-on-Sea, deposited on loan in 1909 by Mr. Christopher W. Parker, D.L., have been returned. While regretting their loss, your Committee desire to express their thanks to Mr. Parker for having allowed them to remain so long.

The ordinary routine of Museum work has continued as in normal times and a large number of specimens have been cleaned, restored, numbered in oil paint and arranged.

In conclusion your Committee desire to express their deep sense of the loss the Museum has suffered by the death of the Hon. Curator, Alderman Henry Laver, F.S.A., to whose foresight and generosity it owes many of its most valuable treasures.

W. GURNEY BENHAM, *Chairman.*

ARTHUR G. WRIGHT, *Curator.*

Visitors to the Museum.

			1916-17.		1917-18.	
			Days open.	Attendance.	Days open.	Attendance.
April	24	7242	24	4767
May	*29	4097	27	4781
June	*30	4816	26	3405
July	*29	4570	27	3724
August	27	7130	27	8856
September	26	5067	25	4924
October	26	2863	27	3261
November	26	2204	26	2715
December	25	2089	25	2919
January	27	2000	27	2767
February	24	1819	24	2529
March	27	2540	26	2962
<i>Total</i>	320	*46437	311	47610

*Including Sundays, May 21st to July 16th.

BANK HOLIDAY ATTENDANCES.

Easter Monday, 24th April, 1916	...	2476
, 9th April, 1917	...	1102
Whit Monday, 28th May, 1917	...	884
August Monday, 6th August, 1917...	...	1011
26th December, 1917	...	318

* The total number of Visitors for the year ending March 31st, 1903, was 20,887 ;
 1904, was 27,039 ; 1905, was 28,408 ; 1906, was 29,588 ; 1907, was 31,078 ;
 1908, was 30,875 ; 1909, was 29,842 ; 1910, was 34,453 ; 1911, was 29,423 ;
 1912, was 27,298 ; 1913, was 32,149 ; 1914, was 29,564 ; 1915, was 49,689
 1916, was 44,810.

The Colchester Museum

IS OPEN DAILY FROM

1st April to 30th September—10 a.m. till 5 p.m.

1st October to 31st March—10 a.m. till 4 p.m.

AND CLOSED ON

Sundays, Good Friday, and Christmas Day, and such other days as the Committee may order.

ADMISSION FREE.

It is urgently requested that any discovery of Archæological interest in the neighbourhood may be brought to the notice of either the Chairman or the Curator as early as possible.

The Curator will be pleased to give any information in his power and may be seen daily, Museum engagements permitting.

Postcards of many of the most important antiquities may be obtained in the Museum at One Penny each.

Curator

...

ARTHUR G. WRIGHT.

List of Additions to the Museum

BY GIFT AND PURCHASE.

From 1st April 1916, to 31st March, 1918.

All the objects were found in Colchester unless otherwise stated.

STONE AND BRONZE AGES.

Tanged and barbed Arrow-head of black flint, one barb wanting. Length, $1\frac{1}{2}$ ins. Found at Dovercourt. Late Neolithic. Purchased. 3434.16

Small chipped implement of yellow flint, slightly patinated and iron stained; probably a spear or lance head. Length, $2\frac{1}{2}$ ins. Found in Epping Forest. Purchased. 3464.16

Small Food Vessel (Abercromby, type 5) of coarse brown ware with admixture of pounded flint. Height, $2\frac{7}{8}$ ins. Found in a midden or shell mound at Bourne's Green Farm, Southchurch. Bronze Age. Donor, Dr. Alfred G. Francis. 3468.16

For illustrations of similar Food Vessels, see Mortimer, *Burial Mounds of East Yorkshire*, plate xxii, fig. 186, plate xxxviii, fig. 317.

Plaster Cast of perforated slab of baked clay, $5\frac{3}{4}$ ins. \times $5\frac{1}{4}$ ins. \times $\frac{1}{2}$ in. One of four slabs found 2 feet below surface of a field which has yielded numerous urns and flint implements, at Viewsley, Middlesex. The slabs are probably of late Bronze Age. Donor, Mr. R. Garraway Rice, F.S.A.

Portions of similar Slabs found at Shoebury are in the Museum and others have been found in the British Camp near Wallington, see *Man.*, July, 1911, No. 67 and at Cherry Hinton Cambs, see *Proc. Cambridge Antiquarian Society*. No. xlv.

Three Scrapers of flint. Found near Chelmsford. Purchased. 3535.17

Axe of greenstone, roughly chipped, or re-chipped, slightly ground at cutting edge. Length, $4\frac{5}{8}$ ins. Found near Nayland. Late Neolithic. Purchased. 3536.17

Re-worked cutting end of broken polished Axe of grey flint; re-worked cutting end of polished Adze of grey flint. Butt of polished Axe of grey flint. Found near Bartlow Hills, Essex. Purchased. 3537.17

Butt end of chipped Axe of flint with bluish white patina and iron stains. Found near Grays. Purchased. 3538.17

- Two portions, butt ends, of polished flint Axes, one re-worked, with chalky white patina. Found in a chalk pit near Grays. Purchased. 3539.17
- Palæolithic Implement of black flint, slightly patinated and iron stained. Found in a bank near Ramsden, Belhus. Donor, Mr. A. E. Carter. 3646.18
- Molar tooth of Extinct Elephant (*E. Meridionalis*). Found in digging a saw pit at Church Street, Bocking. Donor, Mr. H. C. Suckling. 3647.18

EARLY IRON AGE (LATE CELTIC.)

- Bowl of thin brownish red ware with polished black exterior, rounded base with omphalos and tooled line round bulge. Partly restored. Height, $3\frac{1}{8}$ ins. Found in the Thames at Grays. Late Celtic, (La Tène I. Period). Purchased. 3433.16

The round hollow or depression generally known as the omphalos is characteristic of vessels of the Hallstatt Period, when it also appears in bronze bowls or buckets. Examples have been found both at Hengistbury and Glastonbury, in the former case dating about the 3rd or 4th century, B.C., in the latter, being of a late and debased character, about the 2nd century, B.C., see Bushe-Fox, *Excavations at Hengistbury Head, Hampshire, 1911-12*, p. 36, plate xvii.

- Pedestalled Vase of dark brown ware with polished exterior; hollow cup shaped base, rim wanting. Partly restored. Present height, $7\frac{1}{4}$ ins. Found at Wickham Bishops. Late Celtic, 1st Century, B.C. Donor, Colonel Harry Cooper, C.M.G., D.L., J.P. 3481.16

- Small carinated Bowl of grey ware with polished black exterior; beaded rim, narrow cordon formed by two tooled lines round waist, tooled groove at periphery of carination and flat foot ring. Partly restored. Height, $2\frac{3}{8}$ ins. Found with No. 3481. Late-Celtic, 1st Century, B.C. Donor, Colonel Harry Cooper, C.M.G., etc. 3482.16

- Portion of large Cinerary Pot of polished brown ware, beaded base with circular groove on underside; contains cremated bones. Portion of small Pot of hard grey ware with carefully finished base and carinated shoulder, found in above urn. Found with Nos. 381 and 382 at Wickham Bishops. Late-Celtic, 1st Century, B.C. Donor, Colonel Harry Cooper, C.M.G., etc. 3483.16

- Portion of large Cinerary Pot of polished brown ware with beaded base. Portion of foot of a Pedestalled Vase; fragments of rims, etc. All found at Wickham Bishops with the above during the digging of trenches, September, 1915. Donor, Colonel Harry Cooper, C.M.G., etc. 3484.16

Iron Spear Head with narrow slender blade. Length, $20\frac{3}{4}$ ins. Dredged from the Thames at Grays. Late-Celtic. Purchased. 3505.16

A similar weapon also from the Thames is in the British Museum Collection, see *Guide to Early Iron Age*, p. 98, fig. 75-5.

Iron Spear Head of angular form. Length, $10\frac{1}{4}$ ins. Found in river at Colchester. Late Celtic. Purchased. 3506.16

This angular type is not uncommon from the Thames, see *op. cit.* p. 89, fig. 75-67 and a similar weapon was found on a Late-Celtic site at Traprain Law, Haddington, N.B., see *Proc. Society of Antiquaries of Scotland*, vol. xlix, p. 183, fig. 33 4.

ROMANO-BRITISH PERIOD.

Bronze Boss with lion face, resembling the repousse bosses of lock plates in the Joslin and Jarmin collections. Bronze cup shaped object with ornamental protuberance on base. Roman. Purchased. 3498-9.16

Iron object resembling a horse's bit, consisting of two rings about $2\frac{1}{2}$ ins. in diameter, joined by a figure of 8 loop twisted in centre, 3 ins. in length. Found in soil thrown out of a trench at Fingringhoe. Probably Roman. Purchased. 3503.16

Clay Weight of comical form with small perforation near top; perhaps a loom weight. Height, $4\frac{5}{8}$ ins. Found in Union Grounds. Roman. Donor, Dr. Philip G. Laver, F.S.A. 3519.16

Small bronze Bell of rectangular form with loop for handle, clapper wanting. Height, $1\frac{1}{2}$ ins. Roman. Donor, Dr. Philip G. Laver, F.S.A. 3520.16

Handle of Iron Knife with twisted stem and loop for suspension. Roman. Donor, Dr. Philip G. Laver. 3521.16

Millstone of Millstone Grit roughly worked on upper side, 19 ins. in diameter, and $2\frac{1}{2}$ ins. thick. Circular perforation $2\frac{1}{2}$ ins. in diameter. Found in digging a trench at Donyland. Roman. Donor, Lt.-Col. Guggisberg, R.E. 3548.17

The material was kindly identified by the Director of the Geological Survey Museum, Jermyn Street, London.

Cinerary Urn of dark grey ware with under-cut everted brim, containing burnt bones. Height, $7\frac{3}{4}$ ins. Roman. Donor, Mr. Vernon E. Marshall. 3576.17

Cinerary Urn of dark grey ware with everted brim on short neck grooved at base; base of vessel slightly concave. Contains burnt bones and remains of small glass perfume bottle. Height, $5\frac{1}{4}$ ins. Roman, 1st Century, A.D. Donor, Mr. Vernon E. Marshall. 3577.16

Small Olla of red micaceous ware with brown exterior; small everted brim with tooled lines on shoulder; beaded foot with tooled circle on base. Imperfect. Height, $4\frac{1}{4}$ ins. Donor, Mr. Vernon E. Marshall.

Base fragment of "Samian" cup (Form 27) with potter's stamp, illegible. Base fragment of "Samian" cup (Form 33) with stamp, **SOLL**; perhaps that of Sollemnis, a potter of Lezoux. Base fragment of vessel of black ware with hollow base. Roman. Donor, Dr. Philip G. Laver, F.S.A.

Fragment of "Samian" ware, found in Rivenhall Churchyard. Donor, Mr. Miller Christy, F.L.S.

Iron Knife with loop for suspension Roman. Purchased.

Bone Knife Handle ornamented with incised circles and dots. Roman. Purchased.

Four fragments of "Samian" Bowl (Form 37) with two bands of roulette hatching bordered by tooled girth grooves. Roman, probably early 2nd Century. Donor, Dr. Philip G. Laver, F.S.A.

See May, *Silchester Pottery*, plate xxixb, fig. 2, pp. 85-86.

Lamp of light stone coloured ware with chocolate brown colour coating, ornamented with ovolo border and figure of gladiator in relief. Found at Moulsham, near Chelmsford. Roman, 1st Century, A.D. Donor, Mr. E. A. Milligan.

Portion of Candlestick of tile red ware with black exterior. From Roman rubbish pit. Donor, Dr. Philip G. Laver, F.S.A.

Penannular Bracelet of bronze of oval section, flattened on interior, ornamented at one end with shallow grooves. A similar bracelet of circular section, the ends ornamented with encircling grooves. Found with the skeleton of a woman, by the donor. Roman, probably 3rd Century, A.D. Donor, Mr. H. G. H. Elliott.

Forceps of iron, imperfect. Length $6\frac{1}{2}$ ins. Roman. Purchased.

"Samian" Bowl (Form 29) of deep red ware with lustrous glaze. The moulded decoration consists of an upper frieze of festoons, similar to Déchelette, 24 but with poppy head terminals to tassels, between rows of pearls; a lower frieze of cruciform ornaments with corner tendrils alternating with medallions enclosing a fleur-de-lys like design. Roulette notched brim and turned

- foot ring. The potter's stamp within a circle inside base
OF PAZZENI is that of Passenus, or Passienus, a
 Rutenian potter of La Graufesenque in the Nero-
 Vespasian period. Partly restored. Height, $4\frac{1}{2}$ ins. dia-
 meter of mouth, 10 ins. Donor, Dr. Philip G. Laver,
 F.S.A. 3640.17
- Needle or Pin Case of turned bone. Length, 4 ins. diameter
 $\frac{7}{8}$ ins. Partly restored. Roman. Purchased. 3643.18
- Small Ring of bronze, plano-convex section, $\frac{1}{16}$ ins. in
 diameter. Roman. Donor, Dr. Philip G. Laver, F.S.A.
 3658.18
- Bone Dress Pin with expanding head with perforation for
 cord for attachment to dress. Length, 4 ins. Found by
 donor on allotment Old Heath Road. Roman period.
 Donor, Mr. Charles A. W. Wooding. 3667.18

ANGLO-SAXON PERIOD.

- Axe Head of iron with broad cutting edge and with pro-
 jecting spurs on each side of opening for handle. This
 feature is characteristic of axes of the Viking period.
 Found in river at Colchester about 1880. Probably
 Danish, 9th or early 10th Century. Purchased.
 3507.16
- See Baldwin Brown, *The Arts in Early England*, vol. 3, page 234.
- Axe Head of iron with winged blade and projecting spurs
 on each side of opening for handle. Found in river at
 Colchester. Probably Danish. Purchased. 3565.17
- Axe Head of iron, similar to No. 3565, but smaller. Found
 in river at Colchester with above. Probably Danish.
 3566.17
- Small Spear Head of iron, with split socket. Length $5\frac{3}{8}$ ins.
 Found at Colchester. Anglo-Saxon. Purchased.
 3609.17
- Knife Blade of iron with long tang. Length, $6\frac{7}{8}$ ins. Found
 in river at Colchester. Anglo-Saxon. Purchased.
 3635.17

MEDIEVAL AND LATER PERIODS.

- Small Jug of buff ware with mottled green and yellow
 glaze, partly restored. Height 7 ins. Tudor ware,
 16th Century. Purchased. 3432.16
- Latch Key, resembling a Roman type. Early 19th
 Century. Donor, The Hon. Curator, Alderman Henry
 Laver, F.S.A. 3440.16

Large Gotch of red ware with rich orange glaze, inscribed on front—"Success to the Malting Trade, W. Groom, July 1st, 1807"; on either side of inscription "J. Stent" and beneath "Potter." Height, $14\frac{1}{4}$ ins., capacity, 33 pints. Donor, Mrs. R. W. Mason.

3463.16

Mr. W. Groom (Mrs. Mason's grandfather) lived in Queen Street, Colchester, about 1830. He had maltings at Bures St. Mary, where he and the other members of his family are buried. He belonged to the Angel Lodge of Freemasons, his certificate being dated 1811. The family came from Suffolk. The Gotch filled with his best brew was placed on the table on the occasion of his annual supper to his men at the close of the malting season.

Antique Lanthorn with perforated sides and top, and the door fitted with horn. Donor, Mr. Charles Barrow.

3466.16

Three moulded Bricks for window mullions, one imperfect, from Winsley's Almhouses. Donor, Alderman Wilson Marriage, J.P.

3467.16

Flask of olive green Glass of flattened pear shape with long neck on which is a circular medallion with shield of arms beneath a crown and the words "Pouhon in Spa." Donor, Mrs. R. W. Mason.

3469.16

Piece of moulded Oak from gable end window of the George Hotel; removed during repairs in 1916. Donor, Councillor A. M. Jarmin.

3472.16

Ornamental Hat Iron, used for ironing the brims of beaver hats. Donor, Mrs. Adelaide Cater.

3486.16

Carved Oak Bracket from Marquis of Granby Inn. Probably 16th Century. Donor, Mr. Jonathan T. Ward.

3491.16

Cap Badge of the 15th Essex Rifle Volunteers, with arms of county in centre. Donor, Mr. Charles H. Butcher.

3493.16

Small Box, turned in apple or pear wood, with screw on lid. Said when found to have contained two silver pennies, date unknown. Found during demolition of Horwood's premises in High Street. Probably 17th Century. Purchased.

3500.16

Pair of Steel Snuffers with ornamental handles. 18th Century. Purchased.

3501.16

Large Mug of Sunderland ware with a view of "Sunderland Bridge" on one side and "The Gauntlet Clipper Ship" on the other. Height, $5\frac{1}{2}$ ins. Donor, Dr. E. Chichester.

3523.16

Circular Theatre Ticket in pewter. *Obv.* Royal Arms between the words "Theatre Royal" in relief. *Rev.* "Colchester Pit" engraved. Diameter, $1\frac{1}{4}$ ins. About George IV.—William IV. Purchased.

3532.17

- Cobbler's Foot Iron or Last. Early 19th Century. Donor, the Assistant, Mr. T. Smith. 3549.17
- Iron Man Trap with circular toothed jaws. Found at Billericay. Donor, Mr. C. B. Pigot 3558.17
- Large Caudle Pot of Delft ware with spout, cover wanting; decoration in blue, green, orange and yellow. Height, 6 $\frac{3}{8}$ ins. Early 18th Century (?). Donor, Miss Smoothy. 3560.17
- Ink Pot of coarse red ware with rough olive green glaze. Height, 3ins. 14th Century. Purchased. 3563.17
- Iron Axe for squaring timber, cutting edge bevelled on one side only. Length, 7ins. Found at Monkwick. 11th or 12th Century. Donor, Mr C. A. Parker. 3564.17
- A similar axe is shown on a leaden font of Norman date in Brookland Church, Kent. See *Archaeological Journal*, vol. vi., p. 160.
- Large Iron Nail with square cusped head, point wanting. Length, 9 $\frac{3}{4}$ ins. Found at Halstead. Medieval. Donor, Mr. W. Duncan Clark, F.R.I.B.A. 3568.17
- "Partridge" Cane with silver mount; carried by young dandies under the arm in Early Victorian times. Donor, Mr. Thomas Brett Daniell. 3574.17
- Small Steel Fork with two prongs, probably from a toy set. Early 18th Century Purchased. 3575.17
- Vase of red Wedgwood ware with foliage decoration in black relief, *en barbotine*. Imperfect. Donor, Mr. Vernon E. Marshall. 3579.17
- Surveyor's Measuring Wheel with brass dial inscribed "J. Pritty, 51," in glass-faced box. Donor, Mrs. F. W. Dick. 3582.17
- Antique Lemon Squeezer in turned wood. Donor, Mrs. Adelaide Cater. 3585.17
- Balling Iron, used when giving a physic ball to a sick horse. Donor, Mr. A. J. Goody. 3592.17
- Antique Folding Shoe Horn in iron. Purchased. 3597.17

E

- Metal Button inscribed **ESSEX** in relief. Probably from uniform of East Essex Militia. Donor, Mr. W. Seaborn. 3605.17
- Brown Glazed Stoneware Jug with horizontally reeded sides and handle. Height, 6 $\frac{5}{8}$ ins. Found in river at Colchester 17th Century. Purchased. 3604.17
- Card to which are attached several miscellaneous objects such as thimbles, buckles, key, pendants, girdle end, etc., of Roman and Medieval dates. Purchased. 3610.17
- Cap Badge of Essex 2nd Volunteer Battalion in bronze. Donor, Mr. R. J. Godfrey. 3622.17

- Button of uniform of old Borough Police of silvered copper.
Donor, Mr. R. J. Godfrey. 3623.17
- Antique Coffee or Chocolate pot, enamelled cream colour
with dark and light blue vertical stripes, enamelled
black wood handle. Height, $5\frac{1}{2}$ ins. Early 19th Century.
Donor, Mr. H. Mothersole. 3624.17
- Small Sample on fine canvas mounted on board, inscription
worked in black thread. "Ebenezer—Jehovah-Jireh—
Gen. xxii, 14, 1835—H.G." Donor, Mr. W. J. Bather. 3627.17
- Bottle Lanthorn, made by an old tinker from a whiskey
bottle, with perforated iron top, handle and suspension
ring Donor, Mr. A. J. Goody. 3629.17
- Small Leather Beaker, $3\frac{1}{2}$ ins. high. Probably 18th Century.
Donor, Mr. A. J. Goody. 3630.17
- Obsolete Printer's Candlestick of iron, weighted with lead.
Donor, Mr. Charles E. Benham, J.P. 3631.17
- Iron Dagger with thick flat back and long tang, point
reinforced. Length $10\frac{3}{4}$ ins. 14th Century. Purchased. 3639.17
- Collection of 19 Tobacco Pipes from Elizabeth to William
III; small figure of Bacchus seated on a cask, head
wanting, and Trade Token of "Miles Hacklutt in
Bilreky in Essex" pipe maker. On *Obv.* 3 Tobacco
pipes. Found at Billericay. Purchased. 3641.18
- Circular Brass Candlestick with spring tongue on base.
Formerly used on pulpit of Kelvedon Church. Pur-
chased. 3642.18
- Pair of Antique Spectacles with wire gauze guards in
Japanned tin box. Early 19th Century. Donor, Mrs.
Herbert Currell. 3644.18
- Nest of Three Cup-shaped Weights in bell metal, 1lb, 2lbs,
4lbs. Each weight is stamped inside base with a
dagger, or sword, probably London mark, a monogram
A.T. the letter G crowned and a ewer; on the flat
brims are the monogram A.B. and XVI, XXXII and
LXIII respectively. Purchased. 3655.18
- This type of weight was in use in Queen Elizabeth's reign, a fine example
stamped CCLVI OZ is preserved in Norwich Museum and is illustrated by an
excellent photograph in the Annual Report of the Museum for 1916.
- Portion of Rapier Hilt of foliated design, black on gilt
ground. French, *temp.* Louis XV. Found behind
panelling of an old house in Colchester. Donor, Mr.
F. Gordon Roe. 3656.18
- Pocket Pistol, iron barrel, etc., by "Brasher London";
wood stock on which is a small silver plate engraved
with initials "J.J."; the sides of lock are engraved with

trophies and maker's name and city as above. Hammer wanting. Found in a cottage garden near Thundersley, Essex. Donor, Mr. F. Gordon Roe. 3657.18

This weapon is recorded in an article by Mr. Fred Roe, R.I. on "Some Forgotten Nooks" in *The Connoisseur*.

Glass Bottle containing rigged model of Steamship with three masts. Donor, Mrs. Adelaide Cater. 3666.18

COINS, TOKENS, MEDALS

First Brass of Hadrian (A.D. 117-138). *Rev.* Victory standing to r. S.C. Second Brass of Severus Alexander (A.D. 222-235) *Rev.* Mars Ultor. S.C. Donor, Mr. Thomas Reader. 3441-2.16

Small Brass of Constantine family. Donor, Mr. A. E. Purkiss. 344.16

Plated Denarius of Gallienus (A.D. 254-268). *Rev.* Two Captives at foot of trophy. **GERMANICVS MAX V.** Another, *Rev.* Fortune with cornucopia and rudder. **FORT REDVX** Donor, Mr. A. E. Purkiss. 3470.16

Antoninianus of Gordian III. (A.D. 238-244). *Rev.* Emperor standing to r. **SAECVLI FELICITAS.** Found at Frinton-on-Sea. Purchased 3471.16

First Brass of Nerva (A.D. 96-98). *Rev.* Fortune with cornucopia and rudder, **FORTVNA AVGVSTA** S.C. Donor, Master Jack Durrant. 3478.16

Nickel Penny, Nigeria, 1909. Perforated in centre. Donor, Miss Saunders. 3479.16

Third Brass of Gordian III. *Rev.* Emperor standing with globe and spear. **PM TRP V COS II PP.** S.C. Donor, Councillor H. J. Everett. 3485.16

Bronze Medallion of Antoninus Pius (A.D. 138-161). *Obv.* Head of Emperor to r. **ANTONINVS AVG PIVS PP TRP XXIII.** *Rev.* blank. Found in Colchester. Purchased. 3508.16

Small Bronze Medal to commemorate the Duke of Wellington, in boxwood case. Donor, the Hon. Curator, Alderman Henry Laver, F.S.A. 3511.16

Brass Counter or Token. *Obv.* Head of Queen to l. **VICTORIA REGINA** *Rev.* Figure with sword on horseback, two-headed dragon below. **TO HAN-OVER. 1837.** Donor, the Mayor, Councillor Allen G. Aldridge 3516.16

Gold Laurel (Twenty Shilling piece) of James I. *Obv.* Bust of King to l. with laurel wreath, at back **XX. IACOBVS D G MA BRI FRAN ET HI REX.** *Rev.* Shield of Arms with crown above, on cross fleury.

- FACIAM EOS IN GENTEM VNAM.** Perforated for gold ring for suspension. Found near foundations of Hassiobury, Farnham, Essex. Donor, Mrs. J. Thornton Steele. 3527.16
- Second Brass of Nero (A.D. 54-68). *Rev.* Victory marching to l. **VICTORIA AVGVSTA** S.C. Found at Lexden Heath. Purchased. 3551.17
- Eight Roman Coins, including—Second Brass of Domitian (A.D. 81-96). *Rev.* **VIRTVI AVGVSTI**. S.C. Second Brass of Trajan (A.D. 98-117). *Rev.* **TRPOT** /// S.C. Silver Denarius of Septimius Severus (A.D. 193-211). *Rev.* **COS II PP**. Silver Denarius of Julian (The Apostate). *Rev.* Within a wreath, **VOTIS V. MVLTI** X. Purchased. 3552.17
- Bank of England Token for Three Shillings, 1812. Donor, Mr. George Hynard. 3557.17
- Second Brass of Trajan (A.D. 98-117). *Rev.* A Military Cuirass; legend illegible. S.C. Donor, Mr. W. Seaborn. 3603.17
- Second Brass of Vespasian (A.D. 69-79), said to have been found with lamp at Moulsham. (See p. 10.) Donor, Mr. E. A. Milligan. 3618.17

PRINTS, MAPS, PHOTOGRAPHS, AND PRINTED MATTER.

- Set of Six Pictorial Postcards of restorations of British Castles by donor. Donor, Mr. Charles H. Ashdown. 3444.16
- A copy of Verses. Humbly presented to all his worthy Masters and Mistresses of Colchester in Essex. By Thomas Harrison, Bellman. For the year, 1832. In woodcut border. Swinborne, Walter and Taylor, Colchester. 19 $\frac{3}{4}$ ins. \times 14 $\frac{3}{4}$ ins. Purchased. 3484a.16
- Three Hearth Tax Receipts, dated 1671 and 1672. Found in an old house at Copford. Donor, Mr. R. Beaumont. 3490.16
- Birds Eye View of Roman Cologne as restored by Dr. Poppelreuter. Donor, Mr. Henry W. Fischer. 3504.16
- Autograph Letter of Sir John Franklin, the discoverer of the North West Passage. Purchased by Donor at the Farmers' Red Cross Sale at Colchester, 1916. Donor, Councillor C. M. Stanford. 3514.16

- Crown Broadside Poster, Nayland Association against Felonies, etc., meeting held 2nd February, 1836 Printed by G. Dennis, 40 High Street, Colchester. Donor, Councillor A. M. Jarmin. 3533.17
- Eight reprints of Drawings of old Essex Houses, etc., from "Connoisseur" by the donor. Donor, Mr. Fred Roe, R.I. 3544.17
- Page of Missal, probably the Missale Augustanum, 1491. A fine specimen of early printing. Donor, Mr. W. Clark. 3567.17
- Parchment Deed relating to Gestingthorpe, 1541; in oak frame with translation on back. Donor, Mr. W. Clark. 3600.17
- Lithograph, East End of Tiltey Abbey, by Johnson and Newman, published by Day and Son. $14\frac{1}{2}$ ins \times $10\frac{3}{4}$ ins. Purchased. 3611.17
- Engraving, "Lady Plomer's Palace" in Epping Forest, by J. T. Smith, published by N. Smith, 1797. Appears in "Remarks on Rural Scenery," by John Thos. Smith, 1797. Purchased. 3612.17
- Map, Essex divided into Hundreds, "with the most antient and fayre Toune of Colchester. Described and other memorable Monuments observed. Anno 1610. Described by John Norden augmented by I. Speede and are to be solde by G. Humble, *cum Privilegio*. Donor, Miss Hughes. 3613.17
- Photograph of Wooden Font in Marks Tey Church. Donor, Rev. G. Montagu Benton. 3633.17
- St. John's Abbey, printed in colours after a sketch by the donor. Donor, Mr. C. E. Benham, J.P. 3645.18
- Photo-postcard of Doorway with old iron work, at St. Peter's Church, Colchester taken by Mr. Harrington Lazell. Donor, The Assistant, Mr. T. Smith. 3648.18
- Letter from Jones Fawson of Colchester to Edward T. Jarvis of King's College, Windsor, Nova Scotia, dated 28th November, 1806. Donor, Mr. W. H. P. Jarvis. 3650.18
- Nineteen Reprints of Views of Kelvedon from Ancient and Modern Drawings and Prints. Donor, the Rev. E. F. Hay. 3664.18

DEPOSITED.

- Long Narrow Axe of grey flint carefully chipped and partly ground over both faces cutting edge and sides. Length, $7\frac{5}{8}$ ins. Found on Mucking Heath. Late Neolithic. Deposited by Mr. W. C. Wells. 3496.16

Hammer or Mace Head made from an ovoid quartzite pebble, perforated. Found on cliff at Brightlingsea. Early Bronze Age. Deposited by Mr. W. C. Wells.

Fine Glass Bowl with small leaden Patera for cover. Contains burnt bones and was found within the large Amphora deposited in 1909 by Councillor Ernest S. Beard, J.P. (see *Annual Report*, 1910. Plate v. page 25). Height, $9\frac{1}{4}$ ins. Roman. Deposited by Mrs. G. W. Dobson.

Oval Silver Badge with swivel loop. *Obv.* Volunteer surrounded by inscription "Loyal Colchester Volunteers." *Rev.* Inscription, "Given by Capt. Samuel Bawtree. First Prize Target Practice, 1805." Deposited by Dr. Philip G. Laver, F.S.A.

3497.16

3651.18

3607.17

ADDITIONS TO MUSEUM LIBRARY,
1916 AND 1917.

- The Pottery found at Silchester. By Thomas May, F.S.A., Reading, 1916. Donors, The Committee of the Reading Art Gallery and Museum. 3435.16
- Stone Implements from South African Gravels. By Major E. R. Collins, D.S.O., and Reginald A. Smith, F.S.A. (Reprint) Donor, Mr. Reginald A. Smith. 3436.16
- Flint Finds in connection with Sand. By Reginald A. Smith, F.S.A. (Reprint.) Donor, the Author. 3437.16
- Prehistoric Problems in Geology. By Reginald A. Smith, F.S.A. (Reprint.) Donor, the Author. 3438.16
- Four Papers on various Antiquities exhibited before the Society of Antiquaries, with notes by Mr. Reginald A. Smith. (Reprints.) Donor, Mr. Reginald A. Smith, F.S.A. 3439.16
- Archæologia, Vol. lxvi., 1914-15. Purchased. 3446.16
- Report of Research Committee of the Society of Antiquaries of London. No. IV. Third Report on the Excavations on the site of the Roman Town at Wroxeter, Shropshire, 1913. By J. P. Bushe-Fox, Esq., F.S.A. Purchased. 3447.16
- A Guide to the Departments of Archæology and Ethnology in the Saffron Walden Museum. By Guy Maynard. Donor, the Author. 3448.16
- Report on the Animal Remains found at the Roman Fort at Manchester. By J. Wilfrid Jackson, F.G.S. (Reprint.) Donor, the Author. 3449.16
- Middlesex in Saxon Times. By Montagu Sharpe. D.L. Donor, the Author. 3453.16
- Museum Bulletin of the National Museum, Dublin. Vols. 1, 2, 3 and parts 1 and 2 Vol. 4. Donor, the Director of the Museum. 3455.16
- Roman Life and Manners under the Early Empire. By Ludwig Friedländer. Translated by J. H. Freese, M.A., and Leonard A. Magnus, L.L.B. Vol. II. Purchased. 3457.16
- Roman Provincial Administration By W. T. Arnold. Purchased. 3458.16
- Ancient Roman Settlement at Long Melford. By J. Sinclair Holden, M.D. (Reprint.) Donor, the Author. 3465.16
- Ironwork. Part I. Victoria and Albert Museum Hand Book. By J. Starkie Gardner. Purchased. 3473.16

- English Earthenware. Victoria and Albert Museum Handbook. By Sir Arthur H. Church, K.C.V.O. Purchased. 3474.16
- Old English Pattern Books of the Metal Trades, Victoria and Albert Museum Catalogue. Purchased. 3475.16
- Guide to the English Costumes presented by Messrs Harrods, Ltd. Victoria and Albert Museum 3476.16
- Review of the Principal Acquisitions, 1914. Victoria and Albert Museum. Purchased. 3477.16
- Notes on the Coinage and Silver Currency in Roman Britain from Valentinian I. to Constantine III. By Sir Arthur Evans, (Reprint). Donor, the Author. 3480.16
- John James Hall, Portrait Painter and Biographer. By H. W. Lewer, F.S.A. Donor, the Author. 3487.16
- Handbook of the Wellcome Historical Museum. Founded by Henry S. Wellcome. Donor, Mr. G. R. Carline. 3489.16
- What do we owe to the Romans in Art. By Professor G Baldwin Brown. Donor, the Author. 3494.16
- Guide to the Greek and Roman Coins in the Albany Museum, Grahamstown (S.A.) By F. S. Salisbury, M.A. Donor, the Author. 3495.16
- Municipalité D'Alexandrie. Alexandria ad Aegyptum. Guide de la Ville Ancienne et Moderne et du Musée Gréco-Romain. Par E. Breccia. Purchased. 3509.16
- Proceedings of the Prehistoric Society of East Anglia for 1914-15. Vol. II., part. ii. By Subscription. 3510.16
- Some London Street Names, their Antiquity and Origin. First Part. By Arthur Bonner, F.S.A. (Reprint). Donor, the Author. 3513.16
- Roman Suffolk. By G. E. Fox, Hon. M. A. Oxon, F.S.A. (Reprint). Donor, Mr. V. B. Redstone. 3517.16
- The Earthworks at Charlton, London, S.E. By Frank C. Elliston Erwood. (Reprint). Donor, the Author. 3522.16
- Origin of the Neolithic Celt. By Reginald A. Smith, Esq., F.S.A. (Reprint). Donor, the Author. 3524.16
- The Journal of Roman Studies, Vol. V., part 2, 1915. By Subscription. 3526.16
- Hull Museum Publications, Nos. 104, 106 to 109. 3528.16
- Notes Préhistoriques sur le N.E. du Var et confins des Basses-Alpes. Par Dr. Adrien Guébbardt, A.F.M. (Extrait.) Donor, the Author. 3529.16
- Une Curieuse Survivance Céramique. Par Dr. Adrien Guébbardt. (Extrait.) Donor, the Author. 3529.16

- Société Préhistorique Française. Rapports lxxviii. et lxxix.
Donor, Dr. Adrien Guébhardt. 3529.17
- The Romano-British Site on Lowbury Hill in Berkshire.
By Donald Atkinson. 1916. Purchased. 3530.17
- The British Numismatic Journal, Second Series, Vol. I.,
1914 (Vol. XI. O.S.) By Subscription 3534.17
- Local War Museums, a Suggestion. By C. Reginald
Grundy. Donor, the Author. 3541.17
- Congress of Archæological Societies. Report of Earth-
works Committee, 1916 Donor, The Hon. Sec., Mr.
Albany F. Major. 3543.17
- The Connoisseur, January and October, 1916. Donor, the
Editor, Mr. C. Reginald Grundy. 3546.17
- The Connoisseur. October, 1915, March, 1916, March, 1917
and October, 1917. Donor, Mr. Fred Roe, R.I. 3547.17, 3554.17, 3614.17
- On a Collection of Antiquities from the Early Iron Age
Cemetery of Hallstatt presented to the British Museum
by Lord Avebury, 1916. By Sir C. Hercules Read,
LL.D., F.S.A., and Mr. Reginald Smith, F.S.A. (Re-
print.) Donors, the Authors. 3555.17
- Belfast Museum Publications, Nos. 59 and 60. Donor, the
Curator, Mr. Arthur Deane. 3556.17
- Notes on the Palæolithic Floor near Caddington. By
Worthington G. Smith, F.L.S. (Reprint), 3559.17
- Archæologia, Vol. LXVII, 1915-16. Purchased. 3561.17
- Proceedings of the Society of Antiquaries of London.
Second Series. Vol. XXVIII, 1915-16. Purchased. 3562.17
- The Glastonbury Lake Village. By Arthur Bulleid,
L.R.C.P., F.S.A., and Harold St. George Gray. Vol.
II, 1917. By Subscription. 3570.17
- The Medals of Our Fighting Men. By Stanley C. Johnson,
M.A., D.Sc., etc. Purchased. 3580.17
- The St. Nicholas Chambered Tumulus, Glamorgan. By
John Ward, F.S.A. (Reprint.) Donors, the Director
of the Welsh National Museum and the Author.
- The Towns of Roman Britain. By Rev J. O. Brien. Pur-
chased. 3584.17
- Guide to the Meynell Museum, Denstone College, Alton,
1913. Donor, Mr. Cyril Brett. 3601.17
- Notes on the Roman Villa, Chedworth, Glos., and Museum
Catalogue with plan. Purchased. 3602.17
- Palæolithic Man and Terramara Settlements in Europe.
By Robert Munro, M.A., M.D., LL.D. Purchased. 3608.17

- The Essex Review. October, 1917. Donor, Mr. H. Wilmer, C.E., F.S.A. 3615.17
- Samuel Williams of Colchester, Wood Engraver and Painter. By H. W. Lewer, F.S.A. (Reprint). Donor, the Author. 3616.17
- A Washington Token. By William C. Wells. (Reprint). Le Jeu du Fort. Par Joseph Dechelette (Extrait). Early Potters Art in Britain. By T. McKenny Hughes, M.A., F.R.S., F.S.A. (Reprint). On the Natural Forms which have suggested some of the commonest implements of stone, bone and wood. By T. McKenny Hughes, F.R.S. (Reprint). Donor, the Curator, Mr. Arthur G. Wright 3617.17
- Proceedings of the Prehistoric Society of East Anglia for 1916-17. Vol II., part 3. By Subscription.
- An Outline Survey of Saffron Walden and its Regions. Sections IV. and V. By Guy Maynard. Donor, the Author. 3621.17
- Plateau Deposits and Implements. By Reginald Smith, F.S.A. (Reprint). Donor, the Author. 3626.17
- The Church Plate of the Saffron Walden Deanery, Essex. By G. Montagu Benton, M.A. (Reprint). Donor the Author. 3628.17
- Notes on a Proposed Modification of the Design of the Arms of Middlesex. By Colonel Ottley Perry, V.D., J.P., F.S.A. Donor, Lt.-Colonel J. W. Slater, C.M.G., V.D. 3652.18
- British Numismatic Journal. Second Series. Vol. II., 1915. By Subscription. 3659.18
- Spinks' Numismatic Circular. Vol., XXIV. 1916, and XXV., 1917. By Subscription. 3660.18
- The Museums Journal. Vols. XV. 1915-16, and XVI., 1916-17. By Subscription. 3661.18
- The American Museum Journal. Vol. XVII., 1917. Donors, the Trustees of the American Museum of Natural History. 3662.18
- Art and Archæology, An Illustrated Magazine published at Washington, W.C., by the Archæological Institute of America. December, 1916, and January, 1917. Donor, Mr. W. H. Overend. 3663.18
- The Connoisseur, September, 1915, and March, 1918. Donor, Mr. F. Gordon Roe. 3665.18
- Essex* Naturalist. Vol. XVIII., parts 6-11. Donors, the Council of the Essex Field Club. 3668.18

Reports

RECEIVED FROM APRIL 1ST, 1916, TO MARCH 31ST, 1918.

Bootle, Free Library and Museum
 Bristol, Museum and Art Gallery
 Bury St. Edmunds, Moyses Hall Museum
 Cambridge, Fitzwilliam Museum.
 Cambridge, Friends of the Fitzwilliam Museum
 Cambridge, University Library.
 Cardiff, The National Museum of Wales
 Chester, Society of Natural Science, etc.
 Dublin, National Museum
 Dundee, Free Library and Museum
 Hove, Borough Library and Museum
 Ipswich, Borough Museums and Free Library
 London, London Museum
 Manchester, University Museum
 New York, American Museum of Natural History.
 Norwich, Castle Museum
 Oxford, Ashmolean Museum
 Rochdale, County Borough Museum, etc.
 Salisbury, South Wilts and Blackmore Museums
 South Wales, Royal Institution of
 Spalding, Gentlemen's Society
 Stratford-on-Avon, Shakespeare's Birthplace
 Sydney, N.S.W. Technological Museum
 Taunton, Castle Museum
 Warrington, County Borough Museum
 Washington, U.S.A., National Museum
 Whitby, Literary and Philosophical Society

*N.B.—Curators of Museums will much oblige by forwarding
their reports in exchange as issued.*

List of Donors.

Aldridge, Councillor A. G.
 Ashdown, Chas. H. (St. Albans)
 Barrow, Charles (West Bergholt)
 Bather, W. J.
 Beaumont, R. (Lexden)
 Benham, C. E.
 Benton, Rev. G. M. (Saffron Walden)
 Bonner, A. (London)
 Brett, Cyril (Alton)
 Brown, Prof. G. Baldwin (Edinburgh)
 Bushe-Fox, J. P.
 Butcher, Chas. H. (Ilford)
 Cater, Mrs. Adelaide
 Carline, G. R. (London)
 Carter, A. E. (Wickford)
 Chichester, Dr. E.
 Christy, Miller (Chignal St. James)
 Clark, W. (Halstead)
 Clark, W. Duncan
 Committee, Reading Art Gallery and Museums
 "Connoisseur," Editor of (London)
 Cooper, Col. Harry (Wickham Bishops)
 Currell, Mrs. H. (Lexden)
 Daniell, T. B. (West Bergholt)
 Deane, A. (Belfast)
 Dick, Major W. F. (Little Horkesley)
 Director of National Museum (Dublin)
 Director of Welsh National Museum (Cardiff)
 Durrant, Jack
 Elliott, H. G. H. (London)
 Erwood, F. C. E. (London)

Evans, Sir Arthur (Oxford)
 Everett, Councillor H. J.
 Fischer, H. W. (London)
 Francis, Dr. Alfred G. (Hull)
 Godfrey, K. J.
 Goody, A. (Messing)
 Grundy, C. R. (London)
 Guébhard, Dr. A. (France)
 Guggisberg, Lt.-Colonel
 Hay, Rev. E. F. (Kelvedon)
 Holden, Dr. J. S. (Sudbury)
 Hughes, Miss (Chelmsford)
 Hynard, G.
 Jackson, J. Wilfrid (Manchester)
 Jarmin, Councillor A. M.
 Jarvis, W. H. P. (Toronto)
 Laver, Alderman H. (Hon. Curator)
 Laver, Dr. Philip G.
 Lewer, H. W. (Loughton)
 Marriage, Alderman Wilson
 Marshall, V. E.
 Mason, Mrs. R. W. (Colne Engaine)
 Maynard, Guy (Saffron Walden)
 Milligan, E. A. (Chelmsford)
 Mothersole, H. (Chelmsford)
 Overend, J. W. (Bradford)
 Parker, C. A.
 Pigot, C. B. (Ipswich)
 Purkiss, A. E.
 Reade, Sir C. H. (British Museum)
 Reader, Thomas (London)
 Redstone, V. B. (Woodbridge)
 Rice, R. G. (London)

Roe, Fred (London)
 Roe, F. G. (London)
 Salisbury, F. S. (Harpenden)
 Saunders, Miss (Chelmsford)
 Seaborn, W.
 Sharpe, Montagu (Brentwood)
 Sheppard, Thos. (Hull)
 Slater, Lt.-Colonel J. W. (Bolton)
 Smith, Reginald A. (British Museum)
 Smith, T. (Assistant)
 Smith, W. G. (Dunstable)
 Smoothy, Miss (Bocking)
 Stanford, Councillor C. M.
 Steele, Mrs. (Marks Tey)
 Suckling, H. C. (Braintree)
 Trustees of American Museum of Natural History (New
 York)
 Ward, J. T.
 Ward, John (Cardiff)
 Wilmer, H. (Loughton)
 Wright, A. G. (Curator)
 Wooding, C. A. W.

Depositors.

Dobson, Mrs. G. W.
 Laver, Dr. Philip G.
 Wells, W. C. (Harrow)

FORMS OF BEQUEST.

I bequeath out of such part of my personal Estate as may by Law be bequeathed for such purposes, to the Mayor, Aldermen and Burgesses of the Borough of Colchester, the sum of

free from Legacy Duty, for the Benefit of the Corporation Museum of Antiquities, to be expended in such a way as they may deem expedient; and I direct that the Receipt of the Treasurer for the time being of the said Borough shall be an effectual discharge for the same Legacy.

I bequeath*

*ANTIQUITIES
OR OTHER

OBJECTS to the Mayor, Aldermen and Burgesses of the Borough of Colchester (Free from Legacy Duty, which duty I direct shall be paid out of my pure personality), for the benefit of the Corporation Museum of Antiquities, either for Exhibition, or for such other purposes as they may deem expedient: and I further direct that the Receipt of the Town Clerk for the time being of the said Borough shall be an effectual discharge for the same Legacy.



(REVERSE OF BOROUGH SEAL, 15TH CENTURY.)