

# **ESSEX SOCIETY FOR ARCHAEOLOGY AND HISTORY**

(Founded as the Essex Archaeological Society in 1852)



Digitisation Project

## **COLCHESTER MUSEUM REPORTS**

**FOR THE YEARS ENDING  
31 MARCH 1919  
TO  
31 MARCH 1923**

**2015**

**ESAH REF:  
C0919923**

Brom. 344.

BOROUGH OF COLCHESTER.

The Colchester Museum of Local  
Antiquities.

(Founded 1846.)



(OBERSE OF BOROUGH SEAL, 15TH CENTURY.)

REPORT

Of the Museum and Muniment Committee

For the Two Years ended 31st March, 1920.

Price Sixpence.

FRONTISPIECE.



*Photo by the Curator.*

A Section of the Collection of Romano-British Burial Groups in the Corridor.



Borough of



Colchester.

---

THE  
Corporation Museum  
OF  
LOCAL ANTIQUITIES

(FOUNDED 1846).

REPORT

OF THE  
Museum and Muniment Committee

For the Two Years ended 31st March, 1920.

---

PRICE—SIXPENCE.

---

COLCHESTER :  
CULLINGFORD AND CO., LTD.  
1920.



# Committee and Officers.

---

## COMMITTEE, 1918-19.

Alderman W. G. BENHAM, J.P., *Chairman.*

Councillor A. M. JARMIN, F.R.Hist.S., J.P., *Deputy-Chairman.*

THE WORSHIPFUL THE MAYOR (Councillor G. F. WRIGHT).

Alderman WILSON MARRIAGE, J.P., C.C.

Councillor W. COATS HUTTON, J.P.

„ C. T. GALE.

(Mrs.) „ E. M. GREEN.

## 1919-20.

Alderman W. G. BENHAM, F.S.A., J.P., *Chairman.*

Councillor A. M. JARMIN, F.R.Hist.S., J.P., *Deputy-Chairman.*

THE WORSHIPFUL THE MAYOR (Councillor A. OWEN WARD, J.P.)

Alderman WILSON MARRIAGE, J.P., C.C.

„ W. COATS HUTTON, J.P.

Councillor C. T. GALE.

(Mrs.) „ E. M. GREEN.

*The following are not on the Council, but represent the  
Essex Archaeological Society.*

Mr. PHILIP G. LAVER, F.S.A.

Mr. DUNCAN W. CLARK, A.R.I.B.A.

Mr. HARRINGTON LAZELL.

## Curator :

ARTHUR G. WRIGHT.

## Assistant :

THEOBALD SMITH.



## The Corporation Museum.

*To the Mayor and Council of the Borough of Colchester.*

GENTLEMEN,

We beg to submit our Report on the Corporation Museum for the two years ended 31st March, 1920.

The number of visitors to the Museum during the past two years constitutes a record in the history of the Institution; the number for 1918-19 being 51,496 and for 1919-20 46,144, forming the large total of 97,640; the falling off in the second year being largely due to demobilisation and the consequent reduction of troops stationed in Colchester.

It is gratifying at such a time to record so many interesting and valuable additions to the collections by various donors, which have been supplemented by several noteworthy purchases, all of which are described in detail in the accompanying lists and in special cases illustrated by photographs made for the Report by your Curator.

The illustrations unavoidably omitted from the last Report, owing to prevailing war conditions, are now issued in the present Report.

Gifts and Purchases for the Albert Museum and Art Gallery, which your Committee hope will be established in the near future, are briefly recorded at the end of this Report. They include a remarkable and fine example of Fifteenth Century wall painting on wood, of the Virgin throned, which was discovered during alterations to Park Farm, St. Osyth, and generously presented by Mr. Edgar Lilley, the owner of the property.

At the beginning of March, excavations on the site of the Roman houses in the Castle Park discovered in 1906, were started by the Morant Club, by permission of the Parks Committee, under the direction of Major R. E. Mortimer Wheeler, M.C., Litt.D., and have resulted in valuable discoveries relating to the plan of Roman Colchester. The objects found, together with a plan of the excavations, are temporarily exhibited in the corridor of the Museum.

During July, 1919, the British Archæological Association under the presidency of Charles E. Keyser, Esq., M.A., F.S.A. etc., held their 73rd Congress at Colchester, an inspection of the Museum being one of the principal items on their programme.

W. GURNEY BENHAM, *Chairman.*

ARTHUR G. WRIGHT, *Curator.*



## Visitors to the Museum.

			1918-19.		1919-20.	
			Days open.	Attendance.	Days open.	Attendance.
April	...	...	26	4440	25	4653
May	...	...	27	4641	27	4047
June	..	...	25	4207	25	5137
July	...	...	27	4414	26	5133
August	...	...	27	9458	26	9785
September	...	...	25	5384	26	5422
October	...	...	27	3961	27	2501
November...	...	...	26	3495	25	1400
December	...	...	24	2856	24	1661
January	...	...	27	2948	27	1812
February	...	...	24	2678	24	2198
March	...	...	*21	3014	27	2395
Total	...	...	306	51496	309	46144

\*Closed for Cleaning, March 10-14, 1919.

## BANK HOLIDAY ATTENDANCES.

Easter Monday, 1st April, 1918	...	...	1202
„ 21st April, 1919	...	...	1306
Whit Monday, 20th May, 1918	...	...	914
„ 9th June, 1919	...	...	626
August Monday, 5th August, 1918	...	...	1720
„ 4th August, 1919	...	...	1420
26th December, 1918 and 1919	...	...	closed.

\*The total number of Visitors for the year ending March 31st, 1903, was 20,887;

1904, was 27,039; 1905, was 28,408; 1906, was 29,588; 1907, was 31,078  
 1908, was 30,875; 1909, was 29,842; 1910, was 34,453; 1911, was 29,423  
 1912, was 27,298; 1913, was 32,149; 1914, was 29,564; 1915, was 49,689  
 1916, was 44,810; 1917, was 46,437; 1918, was 47,610;



## The Colchester Museum

IS OPEN DAILY FROM

1st April to 30th September—10 a.m. till 5 p.m.

1st October to 31st March—10 a.m. till 4 p.m.

AND CLOSED ON

Sundays, Good Friday, and Christmas Day, and such other days as the Committee may order.

ADMISSION FREE.

---

It is urgently requested that any discovery of Archæological interest in the neighbourhood may be brought to the notice of either the Chairman or the Curator as early as possible.

The Curator will be pleased to give any information in his power and may be seen daily, Museum engagements permitting.

---

Postcards of many of the most important antiquities may be obtained in the Museum at One Penny each.

---

Curator

...

ARTHUR G. WRIGHT.

# List of Additions to the Museum

BY GIFT AND PURCHASE.

*From 1st April, 1918, to 31st March, 1920.*

All the objects were found in Colchester unless otherwise stated.

## STONE AND BRONZE AGES.

Nineteen Flint Flakes and Scrapers, found by donor at Otten Belchamp. Neolithic. Donor, the Rev. H. P. Parmenter. 3732.18

Chipped and partly ground Axe of grey flint, with oblique cutting edge. From the Thames at Grays. Late Neolithic or Early Bronze Age. Purchased. 3803.19

Perforated Hammerhead made from an oval pebble of greenish quartzite with dark chocolate patination. The shaft hole is biconical. Found near Grays. Late Neolithic or Early Bronze Age. Purchased. 3804.19

Arrow-head of grey flint, probably a fake, said to have been found on a gravel path at Birch Vicarage. Donor, Master J. Luard. 3806a.19

Small Cup of light brown finely gritted ware showing traces of a dark brown exterior, originally polished with a bone tool or smooth stone. On one side are the remains of a horizontal pierced "lug" or handle. Height  $2\frac{1}{8}$  ins. Found in the donor's garden at Little Leighs. Bronze Age. Donor, Mrs. Rosa Neild. (*Plate, I.*) 3827.19

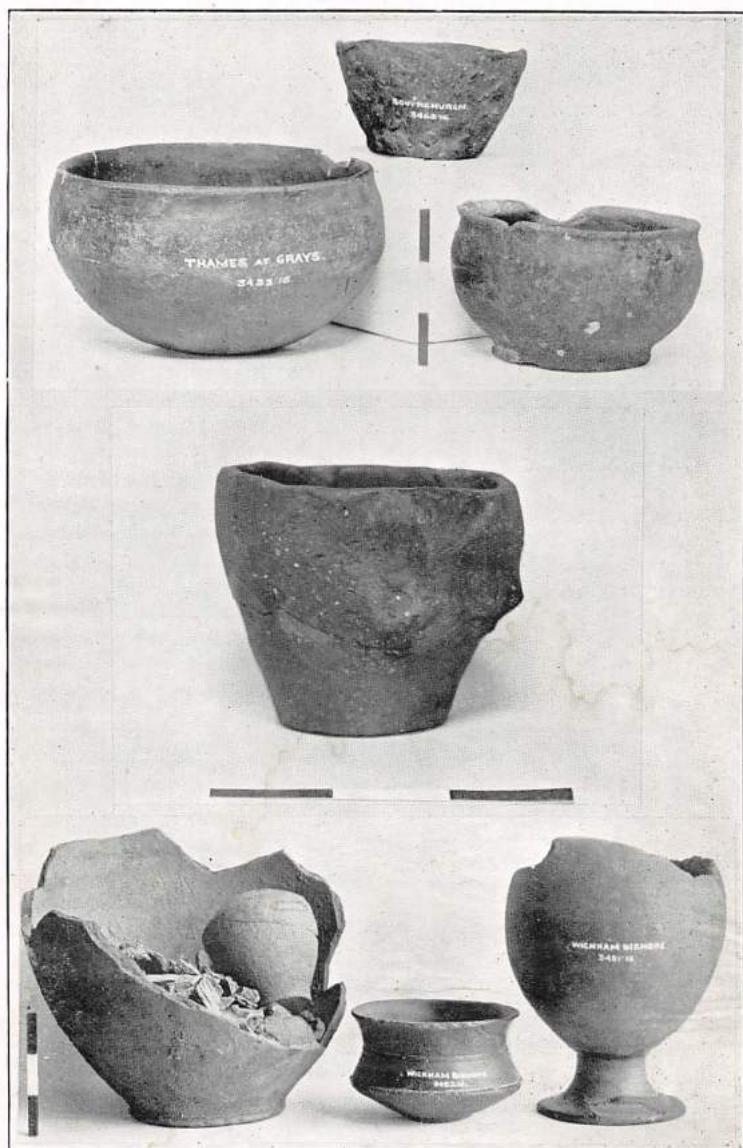
Small leaf-shaped Implement of dark brown flint, one side strongly ridged. Found on Wolves Farm, Tendring. Donor, Mr. Adam Chalmers. 3829.19

Curved Implement of black flint, ochreously stained, with portions of original crust. Found on Wolves Farm, Tendring. Donor, Mr. Adam Chalmers. 3830.19

Half of Flint Nodule with portion of original crust, slightly chipped in places and battered on periphery, perhaps as a hammer. Found on Wolves Farm, Tendring. Donor, Mr. Adam Chalmers. 3831.19







*Photoby the Curator.*

See also Annual Report, 1916-18, pp. 7, 8.

- Two worked Flakes of black flint, found on beach at Wrabness. Neolithic. Purchased 3842.19
- Core of black flint from which several long flakes have been removed. Found at Wickford. Neolithic. Donor, Mr. Alfred E. Carter. 3857.19
- Perforated Hammer-head formed from a large quartzite pebble, with biconical shaft hole. Found at Boxted. Late Neolithic or early Bronze age. Donor, Mr. Edward Gardner. 3969.19

### EARLY IRON AGE (LATE-CELTIC).

- Small Bowl of blackware with polished surface, slightly everted rim and foot-ring. Dredged up in Lawling Creek, near Maldon. Late-Celtic. Donors, the Maldon Fishermen's Co-operative Society, Ltd., and Dr. H. Lyster Jameson. (*Plate, I.*) 3675.18  
Other Bowls and a Spear-head, now lost, are said to have been dredged up at this spot—where are indications of a pile dwelling.
- Upper stone of Quern, of Hertfordshire conglomerate, found at Castle Hedingham. Late-Celtic. Donor, the Rev. H. P. Parmenter. 3731.18
- Fragments of bones and pottery found in pits at Ridgewell, by the donor. Late-Celtic. Donor, Mr. F. J. Gurney, F.R.Met.S. 3789.19
- Lower portion of a Pot of thin, hard, grey ware with black polished exterior; the shoulder acutely turned to a probably wide mouth; below shoulder are traces of shallow, tooled grooves. Dredged up in Lawling Creek, near Maldon. Late-Celtic. Donors, the Maldon Fishermen's Co-operative Society, Ltd., and Dr. H. Lyster Jameson. 3818.19
- Small wide-mouthed Pot of smooth brown ware, showing traces of a black glaze, or *vernis*, with bead rim and foot, and narrow cordon on shoulder. Late-Celtic. 3849.19
- Bell-shaped Cup of fine hard grey clay with highly polished black exterior; the upright rim is slightly concave on outer face and has a narrow groove just below rim or inner; moulded foot-ring and hollow turned base. Potter's stamp on inside base, and owner's marks scratched on sides, M and SEN. Belgic "Terra Nigra" imitating Arretine model, and is not later than 40-50 A.D. Purchased. (*Plate, II.*) 3936.20



Platter, or saucer, of similar ware to above, the black coating much worn on inside; moulded rim and flat foot-ring; inside of base ornamented with concentric tooled lines, within which is a potter's stamp; on under base is scratched owner's mark SE. Belgic "Terra Nigra" imitating Arretine model, not later than 40-50 A.D. Purchased. (*Plate, II.*) 3937.20

For remarks on and illustrations of this class of ware see May, *Silchester Pottery*, pp. 174-176, plates lxxiii.-iv., Loeschke, *Haltern*, p. 262, plate xiv. Ritterling, *Hofheim*, 1913, pp. 333-4, plate xxxvi.

Large Ring of Kimmeridge shale, 2 $\frac{1}{4}$  ins. in outer diameter. First half 1st Century. 3953.20

Fragments of a cordoned Pot with cover, similar to those found at Billericay, Braintree and Lexden. Found in donor's garden. Late-Celtic. Donor, Mr. Vernon Marshall 3964.20

Three Ancient British Gold Staters.—See under Coins, etc.

#### ROMANO-BRITISH PERIOD.

Bronze Fibula with engraved bow. Handle of Amphora with part of maker's stamp. Roman. Donor, Dr. Philip G. Laver, F.S.A. 3669-70.18

Handle fragment of large Amphora with potter's stamp, **SENN[IVS]**. Donor, Dr. Philip G. Laver, F.S.A. 3699.18

Two fragments of "Samian" Bowl (Form 37) with festoon and medallion decoration and the double **D** monogram of the potter **DOECCVS** who worked at Lezoux, about 110-180 A.D. Donor, Dr. Philip G. Laver, F.S.A. 3707.18

Vase of redware with polished exterior ornamented with human mask and false handles. Probably late 2nd or 3rd Century, A.D. Donor, Alderman Lent J. Watts, J.P., C.C. (*Plate, IV.*) 3709.18

Portion of thick Brick, stamped L.L.S. Found by donor in his garden. Donor, Mr. Duncan W. Clark, A.R.I.B.A. 3713.18

A collection of Roman Pottery found in Colchester, formed by the late Councillor Ernest S. Beard. Purchased. (*Plate, III.*) 3741-3764.18



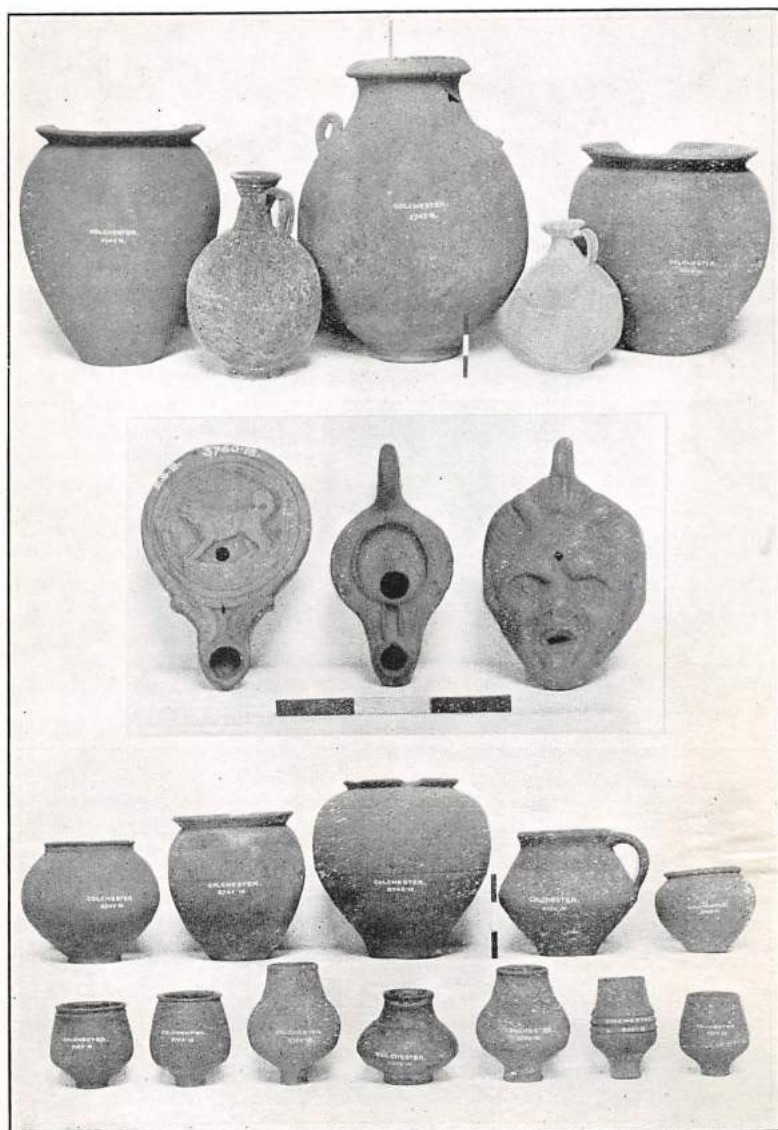
PLATE II.



*Photo by the Curator.*



PLATE III.



*Photo by the Curator.*





Large Globular Amphora, the neck of which was divided from the body to allow the insertion of a cremated burial. 3741.18

See Annual Reports, 1910, p. 25, plate v. and 1918, p. 18.

Large Olla or Store Jar of buff ware with two upright loop handles, one of which is wanting. 3742.18

Large Olla or Cooking Pot of grey-brown ware, with broad mett zone on which are scored tooled lines, trellis fashion. 3743.18

Large Olla, similar to above, with vertical lines on zone and thick oblique rim. 3744.18

Small Cooking Pot similar to above, an owner's mark incised on side. 3745.18

For descriptions of similar vessels see Bushe-Fox, Wroxeter Report, 1913, p. 52, and May, *Silchester Pottery*, p. 154 et seqr.

Olla of hard thin red-brown ware, with band of rouletted ornament between girth grooves; small oblique rim and expanded base. 3746.18

See Bushe-Fox, Wroxeter Report, 1912, p. 73, Fig. 17-26.

Olla of thin, hard grey ware, with tooled surface, narrow upright beaded rim and beaded concave base. 3747.18

Small Olla of hard grey ware with admixture of fine grit, recurved beaded rim and flat base. 3748.18

Beaker of pinkish-buff ware with traces of red brown colour coating; bulbous body and small expanding foot. 3749.18

Bulbous Beaker, similar to above, with traces of chocolate brown colour coating. 3750.18

Beaker of similar character of hard grey ware with deeply tooled girth grooves round bulge. 3751.18

For a description of Bulbous Beakers see May, *Silchester Pottery*, pp. 122-124, 175-176, plate lxxiii. figs. 183-184.

Small Beaker of hard buff ware with red brown colour coating, flat thin rim deeply grooved, slightly expanding foot. 3752.18

Small Beaker, similar to last, "rough cast" with sand or quartz grains. 3753.18

Small Beaker, similar in form to last, with thin edged rim, plain sides and foot. 3754.18

Similar Beakers to above are figured by May, "Cat. Roman Pottery in Carlisle Museum," p. 40, plate ix., figs. 112, 113, 115.

- Small Vase of thick, hard, grey ware with polished surface, curved neck with beaded rim springing from slight offset of strongly outbulged body which is ornamented with bosses within circular grooves and groups of circular indentations. Late 3rd or early 4th Century. (Plate IV.) 3755.18
- One-handled Jug, or Beaker, of thin, coarse brick-red ware with admixture of pounded tile and flint, subcarinated bulging body and narrow curved bevelled rim. Date 3rd or 4th Century. 3756.18
- Flagon of pale buff ware with oval body and long neck, four-ringed funnel-shaped mouth, angular three-ribbed handle, base beaded and concave with circular grooves. 3757.18
- Flagon of pale buff ware with admixture of pounded tile and quartz; short tapering neck with cup-shaped mouthpiece, angular three-ribbed handle, beaded base with concentric grooves. 3758.18
- Mortar of buff ware, restored, with "palm leaf" stamp on each side of spout. 3759.18
- Lamp of pale buff clay, without handle, on the circular plate a barking dog in relief, ornamented nozzle. (Plate, III.) 3760.18
- Lamp of reddish-brown ware, with projecting handle and long tapering nozzle. (Plate, III.) 3761.18
- Lamp of pinkish-red ware with traces of darker colour coating, in form of human face or mask, the open mouth of which forms the nozzle with a small hole in forehead for ventilating. On the base, which is imperfect, are traces of a potter's stamp or inscription. (Plate, III.) 3762.18
- Tall Vase of pale pink ware with admixture of broken tile and grit, bevelled everted rim and beaded foot, small spots of glaze on base and side. 3763.18
- Small Unguent Pot of yellowish-white ware, with plain rim and flat base, coarsely made. 3764.18  
It is doubtful if the last two vessels in Beard Collection are Roman.
- Roman Stone Shot for *balista*, or *catapulta*, found at *Borcovicus*, on the Roman Wall. Donor, Mr. Charles Head. 3782.19





PLATE IV.



*Photo by the Curator.*

See also Annual Report, 1916-18, pp. 10, 11.



Iron Knife Blade with portion of brass mounts; the blade is stamped with maker's name **IVCCVS.F.** Found in the river Colne, at Colchester. Purchased. 3786.19

See Curle, *Roman Fort at Newstead*, page 282, where complete examples from *Vindonissa* are figured.

Fragment of brick-red ware with rouletted decoration. Found in Lexden Park. Donor, Dr. Philip Laver, F.S.A. 3790.19

Roman Pewter Lanx, or Dish, with flat beaded rim and bead foot-ring; stamped in centre with small flower; slightly restored. Donor, Dr. Philip Laver, F.S.A. (*Plate, IV.*) 3807.19

A similar dish was found with others at Manton, Wilts. See Cat. *Devizes Museum*, p. 39, No. 281, plate lxix.

Wide-mouthed Carinated Pot of hard grey ware, with girth grooves on shoulder; partly restored. Donor, Mr. A. D. Passmore. 3836.19

Beaker of hard grey ware, with everted rim and traces of buff slip wash on exterior. Donor, Mr. A. D. Passmore. 3837.19

Iron Stylus, for writing on wax tablets. Donor, Mr. A. D. Passmore. 3838.19

Iron Adze with hammer-like head and oval perforation with expanding sides; on back is incised an owner's mark. Found in river Colne, Colchester. Purchased. 3843.19

Small Spatula, or trowel-shaped tool of iron with twisted handle terminating in small loop for suspension. Found in river Colne. Purchased. 3845.19

Small Spatula-like tool with blade bent into a sharp curve. Found in river Colne. Purchased. 3846.19

Specimens of Cement and Tesserae from the Roman pavement at West Mersea. Donor, Mr. Ashton Turner. 3853.19

Bone Pin, with head in form of a negro's head, probably a hair pin. Donor, Mr. J. F. Marlar. 3866.19

Glass Tesserae and fragments found at the Hythe some years back. Donor, Mrs. Adelaide Cater. 3869.19

Fragment of "Samian" vessel with potter's stamp, **ALBVCI.O**, the first four letters ligatured; and fragments of Mortar with portion of potter's stamp. Donor, Dr. Philip Laver, F.S.A. 3870.19

Albucius was a Lezoux potter of the time of Trajan.



Small Beaker of pale buff ware with light brown colour coating; round the sides are a running stag and hind in relief *en barbotine*. Found with Burial Group at Altnacealgach, Park Road, 1906. Durobrivian ware, Late 1st or Early 2nd Century. Donor, Mrs. F. R. Lees. 3880.20

See Annual Report, 1908, p. 11, plate iii., where the burial is perhaps wrongly attributed to the Early Iron Age.

A Collection of Roman Pottery and other antiquities found in Colchester, formed by Captain A. G. Wheeler. Purchased. 3901-3963.20

Large Olla of hard grey ware with burnished exterior; the brim is ornamented beneath with impressed "pie crust" decoration; below neck is a flat rouletted cordon and a row of pointed stick indentations beneath a girth groove round bulge. 3901.20

Large Olla, or Cooking Pot, of coarse grey gritted ware with wide mouth and moulded rim; has been used as an urn and contains burnt bones. 3902.20

Olla, or Cooking Pot of sandy grey ware with broad zone of tooled lattice work. 3903.20

Pot of light grey gritted ware, with wide mouth and oblique rim; has been roughly trimmed with knife before baking. 3904.20

Pot of hard sandy grey ware; has been used as an urn and contains burnt bones. 3905.20

Olla of hard dark grey ware, the bulge ornamented with broad zone, with double wavy line between two girth grooves. 3906.20

Wide-mouthed Olla of thin brown grey ware with everted rim; round bulge a zone of vertical impressions made with a comb. 3907.20

Wide-mouthed Olla of hard grey ware, with carinated bulge with countersunk cordon on shoulder. 3908.20

Wide-mouthed Pot of brown grey gritty ware; containing burnt bones. First half 1st Century. 3909.20

Small Olla of similar ware, imperfect, with recurved beaded rim. First half 1st Century. 3910.20

- Small Olla of fine grey ware with reddish-brown exterior, narrow recurved rim and expanding foot; beneath a deeply tooled girth groove a band of 12 or 13 lines of small rectangular impressions. First half of 1st Century. 3911.20
- Small Olla of dark grey sandy ware, thick everted rim and tooled girth groove on shoulder. 3912.20
- Small Pot of light grey gritted ware, with wide mouth and bulbous body. 3913.20
- Small Pot of red ware covered with a polished black slip, broad matt zone with tooled lattice work 3914.20
- Wide-mouthed Bowl of light grey sandy clay with everted rim. 3915.20
- Vase of hard grey polished ware with high curved neck and beaded rim, the bulge defined by a slight offset above and below; tapering base with beaded foot. Probably Belgic ware. 3916.20
- Beaker of brown red ware, with dark grey colour coating and broad band of roulette hatching. 3917.20
- Tall butt-shaped vase of brownish-buff ware with thick oblique rim and beaded concave foot; round bulge are two zones of roulette hatching bordered and divided by girth grooves. Early 1st Century. (*Plate, II.*) 3918.20  
See May, *Silchester Pottery*, p. 168, plate lxx., fig. 153.
- Bulbous Beaker of hard light buff ware with chocolate-brown colour coating decorated with scrolls and berries in white slip between two narrow bands of roulette hatching. 2nd to 3rd Century. (*Plate, II.*) 3919.20
- Small Pot of thin grey gritted ware with recurved neck springing from slight offset. 3920.20
- Small Pot of sandy grey buff ware with traces of black colour coating; broad zone of tooled vertical lines. 3921.20
- Small Pot of similar ware to above, narrow everted rim and broad zone of lattice pattern. 3922.20
- Small globular Pot of thin hard grey ware, bead rim, carefully polished above and below matt zone with tooled lattice pattern. 3923.20



Small globular Pot, similar to 3923-20, but black exterior.  
Found with same. 3924.20

Small Vase of grey ware with polished exterior, save a  
matt band round bulge. 3925.20

Small Saucer of hard grey ware with sloping sides and bead  
rim; the cover is formed from base of a pot of similar  
ware, ground round periphery. 3926.20

Neck and handle of Flagon of tile-red ware, the mouth con-  
stricted in centre, forming the figure 8. First half 1st  
Century. 3927.20

*See May, Silchester Pottery, page 145, type 115.*

Flagon, or Jug, of brick-red ware with darker slip coating;  
on front of neck a female face is modelled in low relief;  
on back a false handle of five ribs. 2nd to 3rd Century.  
3928.20

Large Flagon of tile-red ware with boldly bulged body and  
straight tubular neck with wide offset mouthpiece  
grooved round centre; handle wanting; concave  
beaded base with concentric grooving. Early 1st  
Century. 3929.20

Flagon of tile-red ware, boldly bulged body, cone-shaped  
neck with four-ringed mouthpiece, four-ribbed angular  
handle, beaded foot-ring and hollow turned base.  
Middle 1st Century. 3930.20

Flagon of red-buff sandy ware, with pear-shaped body,  
cordoned funnel-shaped mouthpiece, single grooved  
handle with two circular depressions at base, beaded  
footring and hollow-turned base. Middle 1st Century.  
(Plate II.) 3931.20

Flagon of pinkish-buff ware, ovoid body, funnel-shaped  
mouthpiece of five ribs, handle wanting, moulded foot  
with hollow, grooved base. Middle 1st Century.  
3932.20

Flagon of pale yellow ware, plain saucer-shaped mouth and  
three-ribbed handle, base imperfect. 2nd Century.  
3933.20

Small pear-shaped Flask of soft buff ware, single plain  
handle, mouth wanting, moulded foot-ring and hollow  
turned base. Middle 1st Century. 3934.20



Large shallow Lamp Tray of hard micaceous buff ware.  
with small loop handle, nozzle imperfect. 3935.20

Cup and Platter of Belgic Terra Nigra. See under Early  
Iron Age. 3936-37.20

"Samian" Bowl (Form 30) of deep red ware with lustrous  
glaze. The moulded decoration consists of a broad  
frieze of large scrolls from which spring tendrils ending  
in large feathery leaves and spiral buds, beneath a band  
of *ovolo* ornament with pendant rosettes. Moulded rim  
and foot-ring and tooled grooves inside rim. Rutenian  
ware of La Graufesenque, about 50-60 A.D. Found in  
St. Clare Road, 1912. (*Plate, II.*) 3938.20

"Samian" Cup (Form 27) with potter's stamp within  
a small circle in base, **ARDAC**. Ardacus was a  
Claudian potter of La Graufesenque. 3939.20

"Samian" Cup (Form 27), imperfect, with potter's stamp  
within a circle in base, **OFLICIN**. Licinus was a  
Claudian potter of La Graufesenque. He is said to  
have ceased work before Vespasian. 3940.20

Small "Samian" Cup (Form 33), with potter's stamp in  
base **ADVOCISIO**. Advocisus was a potter of Lezoux,  
about 140-180 A.D. 3941.20

Small "Samian" Cup (Form 33) of thick light coloured  
ware, glaze much perished; girth groove and spiral  
line round sides. 3942.20

Large fragment of "Samian" Bowl (Form 29). The  
decoration consists of two friezes separated by a  
moulding with rows of beads above and below. The  
upper frieze consists of a scroll of tendrils and leaves  
and groups of arrow points; the lower, a medallion  
with kneeling Eros, a hare running beneath a festoon,  
with ducks in angles; the panels divided by zig-zag  
lines and rosettes, with tendrils in angles; dark  
lustrous glaze. Probably Rutenian fabric of the  
Vespasian-Domitian period. 3943.20

Fragment of "Samian" Bowl (Form 37). The decoration  
consists of a scroll with large leaves; in volute, lower  
portions of two gladiators, a dog and hare in opposite  
corners; between them, a raised label with potter's  
stamp **FRONTINI**; below, a zig-zag line and band of  
ovals. Frontinus was a Rutenian potter of the  
Vespasian-Domitian period. 3944.20

- Two fragments of "Samian" Bowl (Form 30), moulded rim with *ovolo* border; panel decoration with tendril in corner; gladiators facing a figure holding a wand, and another figure with lion below; all imperfect; dark lustrous glaze. Probably Rutenian ware of Vespasian period. 3945.20
- Small fragment of "Samian" Bowl (Form 37), large *ovolo* band, panel decoration with medallions and semi-medallions; figure of Venus as Déchelette 176. Lezoux ware. 3946.20
- Large fragment of "Samian" Bowl (Form 37). The decoration consists of double ringed medallions with long-stalked leaves between; in medallions, a stag and hound and part of figure as Déchelette 7. Dull orange red glaze. 3947.20
- Fragment of shallow "Samian" Cup, or Bowl, with sloping straight sides and broad brim on which are a hare and leaf *en barbotine*. 3948.20
- Base fragments of "Samian" Cups and Bowls with potters' stamps. (1) **MARCI**; Marcus, a potter of Montans, about 80-100 A.D.; (2) **PATERCL**, Paterclus or Paterclinus, probably end of 1st Century; (3) **OF CRES**. Crestus was a potter of La Graufesenque in Claudian-Domitian period. 3949.20
- Roundel, or Tessera, formed from a fragment of hard grey ware, polished black exterior, inscribed **PARATVS**. Diameter,  $2\frac{3}{4}$  in. 3950.20
- Twelve fragments of various wares including Castor "Samian" and Belgic. 3951.20
- Mouth-rim of large Amphora, the broken edge ground flat to form a stand for a pot with round base; owner's mark cut on upper brim. 3952.20
- Large Ring of Kimmeridge Shale. See under Early Iron Age. 3953.20
- Fine melon-shaped Bead of dark blue glass. 3954.20
- Three Beads of blue and green frit. 3955.20
- Bronze Buckle, pin wanting. 3956.20
- Two iron Styli. 3957.20



Two narrow bronze Spoons, bronze Probe or Ear-pick, bronze Lamp Suspender, two fragments of bronze Steelyards, fragment of bronze Mount, two bronze Studs, five bronze Pins, two bronze Rings, bronze Stud, fragment bronze Fibula.	3958.20
Small bronze Nude Figure of a woman.	3959.20
Portion of Leg and Sandalled Foot in bronze. Probably Votive.	3960.20
Bone Tool, or Spatula, with ornamental handle	3961.20
Ten bone Pins with ornamental heads, six ditto plain, five ditto or Needles with perforated heads.	3962.20
Roman Coins. See under Coins	3963.20

*Completion of Wheeler purchase.*

---

Small carinated Beaker of brownish grey ware with darker exterior much worn, everted plain rim and small moulded and hollow turned foot. Found at Dunmow, Essex, 1828. Late 1st Century. Donor, Mr. F. C. Elliston-Erwood.	3972.20
--	---------

### ANGLO-SAXON PERIOD.

Bronze Buckle, originally heavily gilt with loop and plate in one piece, pin wanting. Found in gravel pit at Feering Hill. Saxon, about 500 A.D. Donor, Mr. H. E. Bacon.	3778.19
--	---------

Mr. Reginald A. Smith, F.S.A., of the British Museum, to whom I submitted the brooch for an opinion, wrote: "the heavy foot reminds one of the tongue of a large series of early buckles (some in gold) that point to the south-east of Europe, but yours probably comes from or through N.E. France."

Ten Anglo-Saxon Silver Pennies. See under Coins, etc.	
---	--

### MEDIEVAL AND LATER PERIODS.

Portion of lead Water-pipe with "burnt joint" as in Roman period. Date about 1830. Donor, Dr. Philip G. Laver, F.S.A..	3671.18
Small circular Weight, stamped with a dagger and flagon and G below a crown. Purchased.	3674.18



Pair of Pocket Pistols by Howe, of Colchester, with powder, bullet and cap flask, bullet caster and screw lever in case. Purchased. 3693.18

China Doll dressed to represent Queen Victoria in Court robe of white satin with velvet train, by an old lady of 90 about 50 years ago. The doll was purchased by Major Dick at the Fête in aid of Lord Roberts' Fund, in the Castle Park, July 4, 5 and 6, 1918. Donors, Major and Mrs. Dick. 3704.18

Two leaden Bullæ, one inscribed **ALEXANDER, PP. III.**, the other **SIXTVS PAPA III.** The obverse of each has the heads of SS. Peter and Paul. Purchased. 3714.18

Cast iron Shield with Arms of the Cordwainers' Company in relief, from an old house in Colchester. Purchased. 3715.18

Cut-glass Decanter, stopper wanting, engraved with Borough Arms and inscription, "Loyal Colchester Volunteers." Donor, Dr. Philip G. Laver, F.S.A. 3718.18

Apothecary's Scales and Weights in japanned metal case. 18th Century. Purchased. 3719.18

Three circular brass Weights. *Obv.* Head of King, **GEORGIUS III. DEI GRA.** *Rev.* (1) Guinea. **W.T.** 5. 8. 1775. an anchor, (2) Half-guinea, (3) Quarter-guinea. Purchased. 3719.18

Swingle or Swingle Staff, used in flax dressing in South Somerset, middle of 19th Century. Donor, Dr. R. Hensleigh Walter, F.S.A. 3723.18

Parchment Lace Pattern. Early 18th Century. Donor, Mr. J. W. Bodger. 3727.18

Money Pot of hard buff ware with patches of yellow glaze. 18th Century. Donor, Mr. Duncan W. Clark, A.R.I.B.A. 3728.18

These pots, which date back to Elizabethan times, and perhaps earlier, were generally known as Christmas Boxes or Thrift Boxes. (See Jnl. Brit. Arch. Assoc., Vol. xxx., p. 443.)

Weighing Machine for testing sovereigns and half-sovereigns, about middle of 19th Century. Purchased. 3729.18





*Photo by the Curator.*

See also Annual Report, 1916-18, p. 14.



- Glass Wine Bottle with long neck and large "kick" in base. Found in old house on the Hythe. Middle 18th Century. Donor, Mr. J. W. Bather. 3730.18
- Cast lead Pump-box with reeded spout and portion of lead pipe with joint; the front of box is ornamented in relief with scallop shell, laurel sprays and two eight-rayed stars. From old pump at Beacon End Farm, Stanway, taken down 1918. Purchased. 3740.18
- Mourning Ring of gold with black enamel. The design is a skeleton with pick, shovel and pall. Inside is engraved "F. Meades, *obt.* 31 Dec. 1725, *æt* 74." Donor, Dr. Philip Laver, F.S.A. 3775.19
- Small Iron Knife in wooden handle; the blade, which is much worn, is stamped with maker's mark. Found in the Colne. Purchased. 3787.19
- Brandy Flask in form of a pistol in Lambeth stone ware, stamped on side, "Green, Lambeth." 18th Century. Donor, Dr. Philip G. Laver, F.S.A. (*Plate V.*) 3796.19
- Stone ware Mug with loop handle and pinched base. 15th Century. Found in excavation in cellar of Red Lion Hotel by the donor. Four bases of Venetian glass goblets; four fragments of Bellarmines, etc.; one fragment of red glazed earthenware; all found with mug. Donor, Mr. T. W. Millgate. 3822-25.19
- Iron Axe with tubular socket. 13th or 14th Century. Found in the Colne. Purchased. 3844.19
- Shoemaker's, or leather-cutter's, iron Knife Blade, handle wanting. Found in the Colne. Purchased. 3847.19
- Five leather Shoe Soles with long, pointed toes, for adults and children. Found in the Colne. 13th and 14th Centuries. Purchased. 3848.19
- Set of Dentist's Instruments, 3 in number. 18th Century. Purchased. 3856.19
- Lambeth stone ware Jug, with panel in relief, St. George and the Dragon. Under, is stamped, **MOOR, COL-CHESTER**. Near the rim is a stamp **W** beneath a crown. Early 19th Century. Purchased, half the amount being given by Alderman Wilson Marriage, J.P. (*Plate, V.*) 3862.19

- Iron Frame of leaded window, with open scroll-work design covering latch. From Elmstead Manor House. 16th Century. Purchased. 3872.19
- Small brass Jew's Harp, tongue wanting. Found in excavations on Balcerne Hill. Donor, Dr. Philip G. Laver, F.S.A. 3879.20
- Knife and Fork with handles of Bow China. About 1750-1770. Donor, Mrs. Adelaide Cater. 3887.20
- Swinging Bludgeon with brass mounts. Donor, Mrs. Bridge. 3891.20
- Brass Roundel engraved with figure of armed knight on horseback, with foliage and flowers in field; perforated on edge and in centre for attachment to leather or wood. Late 16th Century. Found when restoring donor's house in West Stockwell Street. Donor, Mr. Duncan W. Clark, A.R.I.B.A. 3892.20
- Brass Tobacco-pipe Stopper and Seal combined, the bezel engraved I.W. 17th Century. Found when restoring donor's house in West Stockwell Street. Donor, Mr. Duncan W. Clark, A.R.I.B.A. 3893.20
- Iron object in form of an Axe, perforated with quartrefoil. Found at Kersey. Donor, Mr. Duncan W. Clark, A.R.I.B.A. 3897.20
- Figure of an armed Knight, feet and portions of spear and plume wanting. Dug up on Notley Hill, Braintree; an iron casting, probably of a doorstep, of 18th Century. Donor, Mrs. A. Griffin. 3968.20

### COINS, TOKENS, MEDALS.

- Eighteen Roman Silver Coins, consisting of *Denarii* of Vespasian, Domitian, Nerva, Hadrian, Antoninus Pius, Sept. Severus, Caracalla; *Antoniniani* of Gordian III, Philip I., Gallienus, Salonina, and *Quinarii* of Julian II. and Valentinian II. All in excellent condition and found in Colchester. Purchased. 3694.18
- A collection of 123 Trade Tokens of Colchester Tradesmen of the Seventeenth Century. Purchased. 3695.18
- Casting Counter, 15th Century. Found in garden at Chignal. Donor, Mr. G. B. Godfrey. 3703.18

PLATE VI.



*Photo by the Curator.*

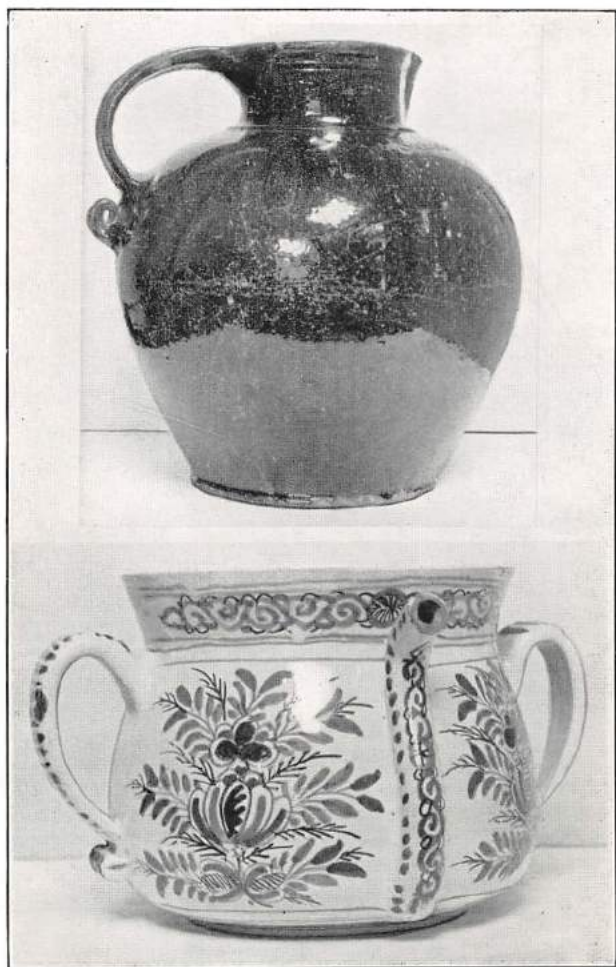
See Annual Report, 1916-18, pp. 10, 18.







PLATE VII.



*Photoby the Curator.*

See Annual Report, 1916-18, pp. 12, 13.



- Half-crown of Charles I. *Obv.* the King on horseback, with plume in field. Aberystwyth Mint. Purchased.  
3716.18
- Trade Token of John Gunfield of St. Oseth, 1665. Purchased  
3717.18
- Silver Medal commemorating the Jubilee of Queen Victoria, 1837 to 1897. Donor, Miss Farrar.  
3726.18
- Two Minims, late Roman coins, and "Third Brass" coin of Carausius, *rev.* **COMES[AVG]**. Donor, Mr. A. E. Purkiss.  
3728.18, 3733.18
- Bronze Medal commemorating Jubilee of Queen Victoria, 1837-97. Donor, Mrs. Councillor Green.  
3734.18
- Groat of Edward IV., London Mint, 1464-1483. Another, Bristol Mint, same period, as Hawkins, No. 5 and three brass Counters, or Jettons, for reckoning on the counting board. 15th Century. All found at Newton, Essex. Donor, Mr. George March.  
3779.81.19
- "Third brass" Coin of Constantine the Great, in fine state. Donor, Mr. R. Chaplin.  
3785.19
- Silver Medal with loop for suspension; *obv.* St. George and the Dragon, **S. GEORGIVS EQVITVM PATRONVS**. *Rev.*, a ship with Christ and Disciples on stormy sea: **IN TEMPESTATE SECVRITAS**. Diameter  $1\frac{5}{16}$  in. Donor, Mr. R. G. Williment.  
3797.19  
Such medals were worn as charms against shipwreck and other accidents.
- Minim with radiated head on obverse. Donor, Mr. A. E. Purkiss.  
3798.19
- Silver Medal. *Obv.*, two busts jugati; inscription—"Living in lawful wedlock 40 years | Peter Muilman A. 68, Mary Chiswell A. 61." *Rev.*, view of house with temple on mount, etc., above, Kirby Hall; in *Exergue*, shield of arms, 28 April, 1774. Deposited by Dr. Philip Laver, F.S.A.  
3799.19
- Roman As. *Obv.* Head of Janus with mark of the As, 1 above. About 200 B.C. Found at Braintree; also a copper coin of Portugal, *obv.* **I.V.** Donor, Mrs. Kenworthy, to be added to Kenworthy Collection.  
3805.19
- Groat of Henry VIII., Posui Deum type, with bust of Henry VII. First issue. Purchased.  
3810.19

Ancient British Gold Stater, *obv.*, Widespread degenerate head to right, hair arranged in tiers. *Rev.*, A Victory above a horse to right; beneath, a rosette. Weight 113 grains. Found at Panfield, Essex, about 1893. Purchased. 3812.19

Ancient British Gold Stater, similar to above, but more worn. Weight 108 grains. Found at Wethersfield, Essex, about 1893. Purchased. 3813.19

Ancient British Gold Stater. *Obv.* Plain and convex. *Rev.*, Disjointed and tailless horse to right, portions of figure of Victory with oval Eyelike ornament behind and in front. Weight 96 grains. Found at Shalford, Essex. Purchased. 3814.19

Silver Denarius of Hadrian, *rev.* **FELICITAS AVG.** (Akerman, No. 29) rare, struck 119 A.D. Donor, Mr. F. W. Lester. 3840.19

Milled Groat of Elizabeth, 1567, fine state. Purchased. 3841.19

Electrotype of the Stater of Philip of Macedon from which the Ancient British Coinage was evolved. Donors, the Trustees of the British Museum, through Sir Frederic Kenyon, K.C.B. 3850.19

Trade Token of Richard Boyse of Colchester, 1668. Donor, Mrs. Fairhead. 3852.19

Silver Denarius of Julius Cæsar, struck in Gaul, 50-49 B.C. False Sestertius of Otho. Donor, Mr. J. Bugg. 3854-5.19

Kindly identified by Mr. G. F. Hill, keeper of Coins and Medals, British Museum.

Twelve English Silver Coins from Henry VIII. to George III., and small silver Medal to commemorate birth of Charles II. Purchased. 3876.19

"Second Brass" coin of Faustina, Sixpence of Elizabeth, 1578. Found when laying pipes on Balkern Hill. Purchased. 3877.20

"Second Brass" coin of Constantine jun. Donor, Mr. B. W. Lee. 3890.20

Ten Anglo-Saxon Silver Pennies of Aethelred II., Canute, and Edward the Confessor, in fine state. Struck at Colchester. Donor, Alderman W. Coats Hutton, J.P. 3900.20



- Bronze Token. *Obv.*, Bust to left, "John Howard, F.R.S., Philanthropist." *Rev.*, Britannia seated, "Rule Britannia, 1795" Inscription on edge illegible. Donor, Mr. Edward Gardner. 3970.20
- "Second Brass" coin of Claudius (41-54 A.D.) *Rev.*, Minerva with spear and shield. **S.G.** Purchased. 3971.20
- Six "Second Brass" Coins, purchased with Wheeler Collection of Pottery. All found in Colchester. 3963.20  
 Vespasian, *rev.*, **ÆQVITAS AVGVSTI, S.C.**  
 Domitian, **COS xlii.** *Rev.* illegible, **S.C.**  
 Antoninus Pius, *rev.*, **LIBERTAS COS. III., S.C.**  
 Marcus Aurelius, *rev.*, **HILARITAS S.C.**  
 Commodus, young head, *rev.* illegible.  
 Commodus, old head, *rev.*, illegible.

#### MANUSCRIPTS, PRINTS, MAPS, PHOTOGRAPHS, LANTERN SLIDES AND PRINTED MATTER.

- Large unmounted Photograph of Late Celtic mirror in the Mayer Museum, Liverpool, and Print of a similar mirror found at Birdlip, Glos. Donor, Mr. Edward Bidwell. 3676-7.18  
 See Romilly Allen, *Celtic Art*, p. 114 and *Archæologia*, vol. LXI. p. 329 et seq.
- Photograph of Brass to Radulphus de Knevynton, 1370, in Aveley Church. Donor, Mr. Aubrey Goodes. 3700.18
- A Critique of the Rev. H. Jenkins' Lecture on Colchester Castle, extracted from the National Miscellany, vol. I., 1853. Donor, Mr. J. T. Ralling. 3705.18
- Wash Drawing of Colchester Castle about 1275, conjecturally restored, by C. H. Ashdown, F.R.G.S. Purchased. 3706.18
- Seven Picture Postcards of Roman and other Antiquities in Namur Museum. Donor, Mr. G. C. Brown. 3766.19
- Photograph of Arab Water-bottle found at Leyton on site of 17th Century house, 1917. Donor, Mr. Francis W. Reader. 3768.19
- Will of Sir Isaac Rebow, Knt., of Colchester, dated 1725, and a number of papers, letters, etc., relating to the Rebow family. Purchased. 3769.19



- Nine Deeds and Leases of Property and Inventory of contents of Mill, 18th Century. Purchased. 3774.19
- Set of Pictorial Postcards of Roman, Frankish and Medieval Antiquities in the Namur Museum. Donor, The Curator of Namur Museum. 3784a.19
- Title Page and Six Plates of "The World of Fashion and Continental Feuilletons," vol. IX., Jan. to Dec., 1832. Donor, Mr. S. Bull. 3793.19
- Three Photographs of Slate Tools found by donor, and of two vessels made by him with the aid of the tools. Donor, Mr. G. W. Smallwood. 3795.19
- Two Photographs of the Hall Farmhouse, Orsett, taken by donor. Donor, Mr. George Biddell. 3802.19
- Set of 413 Photographic Postcards of Essex Churches, by Mr. G. W. Siggers, arranged in two albums by Mr. Paul Mathews, M.A. Donors, Messrs. Boots, Ltd. 3815.19
- Two Albums to contain set of postcards as above. Donor, Mr. Paul Mathews, M.A. 3816.19
- Ten Pictorial Postcards of Colchester and Earls Colne. Donor, Mr. Paul Mathews, M.A. 3817.19
- Photo-Postcard of Late Celtic pedestalled Vase in Letchworth Museum. Donor, Mr. Paul Mathews, M.A. 3820.19.
- Photograph of Roman Pewter Flagon in the Ransom Collection. Donor, Mr. Frank Lambert, M.A. 3834.19
- Folio copy of Wise's *Nummi Bodleiani*, Oxford, 1750; plain calf binding; plates. Donor, Mrs. Adelaide Cater. 3851.19
- Six Lantern Slides of Balkerne Gate, Roman Wall, etc. Donor, Mr. H. Lazell. 3875.19
- Photograph of Roman Feeding Bottle found at N. Petherton, Somerset, 1919. Donor, Dr. R. Hensleigh Walter, F.S.A. 3881.20
- Illustrated London News, May 3, 1856, with account of the Visit of the Prince Consort to Colchester, and woodcut. Purchased. 3882.20

- Six Prints of St. Botolph's Priory, Greenstead Church, St. Mary Magdalene, St. John's Abbey Gate and Aldham Hall. Purchased. 3882.20
- Ten M.S. Lectures upon Astronomy by the late Professor George Scott, of Observatory Court, Colchester, about the year 1830. Presented by his grandson. Donor, Mr. George Bunting Scott. 3883.20
- Photograph of Roman Pottery found by donor at Canterbury, October, 1909. Donor, Lt.-Colonel Oliver H. North, D.S.O. 3884.20
- Six Pictorial Postcards of old houses in Rouen. Donor, Sergeant Harold French, R.A.M.C. 3899.20
- Forty Lantern Slides of British and Roman Antiquities in the Museum. Donor, Dr. Philip Laver, F.S.A. 3974.20
- Five Lantern Slides, Old Cottages, Terling, etc. Donor, The Curator, Mr. A. G. Wright. 3975.20

#### ADDITIONS TO MUSEUM LIBRARY,

From 1st April, 1918, to 31st March, 1920.

- The Vandalisms of Peace. By W. Randolph, London, 1918. Purchased. 3680.18
- On some Human and Animal Bones, Flint Implements, etc. discovered near Ipswich. By J. Reid Moir. (Reprint.) Donor, the Author. 3681.18
- Catalogue of the Roman Pottery in the Museum, Carlisle. By Thomas May, F.S.A., and Linnaeus E. Hope. F.L.S. (Reprint.) Donor, Mr. L. E. Hope. 3682.18
- The Tablet from Yuzgat in the Liverpool Institute of Archæology. By the Rev. A. H. Sayce, D.D., M.R.A.S., and Theophilus G. Pinches, LL.D., M.R.A.S. Donor, Professor R. C. Bosanquet, F.S.A. 3683.18
- Some Axes and a Spear. By R. C. Bosanquet. (Reprint.) Donor, the Author. 3684.18
- The Races of Crete. By Professor R. C. Bosanquet, M.A. (Reprint.) Donor, the Author. 3685.18
- Some Recent Excavations at Sparta. By R. C. Bosanquet, M.A., F.S.A. (Reprint.) Donor, the Author. 3686.18





- Recent Excavations at Miletus. By Professor R. C. Bosanquet, M.A. (Reprint.) Donor, the Author. 3687.18
- Roman Roads and the Distribution of Saxon Churches in London. By Reginald A. Smith, F.S.A. (Reprint.) Donor, the Author. 3688.18
- Archæologia, Vol. lxviii., 1916-17. Purchased. 3689.18
- Proceedings, Society of Antiquaries of London. 2nd series. Vol. xxix., 1916-17. Purchased. 3690.18
- The Evolution of Coinage. By George Macdonald. Purchased. 3692.18
- The Coinage of Suffolk. By Charles Golding. Privately printed, London, 1868. Donor, Mrs. Adelaide Cater. 3696.18
- Sidelights on Italian "Bow-pullers." By Reginald Smith, F.S.A. (Reprint.) Donor, the Author. 3697.18
- On the Ancient Trade Weights of the East. By W. Airy, M.Inst.C.E. (Reprint.) Donor, the Author. 3701.18
- Some Prehistoric Sepulchral Remains, near Pendine, Carmarthenshire. By John Ward, F.S.A. (Reprint.) Donor, the Author. 3702.18
- Centuriation in Roman Britain. By F. Haverfield. (Reprint.) Donor, the Author. 3711.18
- The Connoisseur, August, 1918. Donor, Gunner F. G. Roe, R.F.A. 3712.18
- Guide to Municipal Museum and Art Gallery, Plymouth, 1912. Donor, Mr. H. W. Lewer, F.S.A. 3720.18
- Roman Remains, Perrydarren Park, Merthyr Tydfil, by F. T. James. (Reprint.) Donor, the Author. 3721.18
- The Token Coinage of Essex in the 17th Century, by William Gilbert, F.R.N.S. (Reprint.) Donor, the Author. 3722.18
- Essex Naturalist, Vol. XVIII., part xii. and Vol. XIX., parts i. and ii. Donors, the Council of the Essex Field Club. 3735.18, 3839.19, 3896.20
- Archæology in War Time: A small Romano-Gaulish Settlement at Albert, Somme, France, by F. C. Elliston Erwood. 3738.18



- Proceedings of the Prehistoric Society of East Anglia.  
Vol. II. part 4, 1917-18; Vol. III. part 1, 1918-19. By  
subscription. 3739.18, 3859.19
- The Museums Journal. Vol. XVII., 1917-18, and XVIII.,  
1918-19. By subscription. 3765.19, 3875a.20
- Spinks' Numismatic Circular Vol. XXVI., 1918, and  
XXVII., 1919. By subscription. 3783.19, 3975c.20
- The Connoisseur. Nos. 39, 79, 123, 157, 185, 190, 202, 205,  
209. Purchased. 3784.19
- History of the Ancient Church of St. Peter and St. Paul,  
Little Horkesley. Donor, the Author, Major W. F.  
Dick. 3784b.19
- The Connoisseur, April, 1919. No. 212. Donor, Mr. F.  
Gordon Roe. 3788.19
- Journal of Roman Studies. Vol. VI., 1916, Vol. VII., 1917.  
By subscription. 3791.19, 3894.20
- Note on an Arab Water-bottle. By Francis W. Reader.  
(Reprint.) 3792.19
- Archæological Excavation. By J. P. Droop, M.A., Cam-  
bridge, 1915. Purchased. 3794.19
- The Expert, Vol. I., parts 1 to 8 and July, 1908, in one  
volume. Purchased. 3819.19
- A Short Guide to Letchworth Museum. By W. Percival  
Westell, F.L.S. Donor, Mr. Paul Matthews, M.A. 3820.19
- St. Botolph's Priory, Colchester. (Official Guide.) By C.  
R. Peers, M.A. Donor, the Author. 3826a.19
- The Journal of Hellenic Studies. Vol. XXII., part 2 and  
Vol. XXIII., part 2. Donor, Mrs. Adelaide Cater.  
3828.19
- Proceedings of the Society of Antiquaries of London, 2nd  
Series. Vol. XXX., 1917-18. Purchased. 3832.19
- Six Reprints of Papers on (1) Three Rare Flint Implements;  
(2) Irish Serpentine Latchets; (3) Prehistoric and  
Anglo-Saxon Remains; (4) Roman Bronze Pendant;  
(5) Essex Redhills as Saltwoods; (6) Report Local  
Secretary for Hampshire. Donor, Mr. Reginald A.  
Smith, F.S.A. 3833.19

- A Descriptive Account of the Roman Pottery made at Ashley Rails, New Forest. By Heywood Sumner, F.S.A. Donor, the Author. 3848a.19
- The A.B.C. of Collecting Old Continental Pottery. By J. F. Blacker. Purchased. 3860.19
- The Evolution of the English House. By Sidney O. Addy, M.A., London, 1878. Purchased. 3861.19
- British Numismatic Journal. Second Series. Vol. III., 1916. By subscription. 3863.19
- Hull Museum Publications, Nos. 117, 119-121. Donor, Mr. Thos. Sheppard, M.Sc. 3864.19
- On Excavations at St. Mary-le-Bow, Cheapside. By Frank Lambert, M.A. (Jnl.Brit.Arch.Ass.) Donor, the Author. 3865.19
- Sale Catalogue of the Cater Collection of English Glass. (Sold by Sotheby, Wilkinson and Hodge, Dec., 1919). Donor, Mrs. Adelaide Cater. 3867.19
- Lidbury Camp, by Mrs. M. E. Cunnington. (Reprint.) Donor, the Author. 3868.19
- The Origin of the Rostro-Carinate Implements. By F. N. Hayward (Reprint.) Donor, the Author. 3871.19
- Pre-Palæolithic Man. By J. Reid Moir, F.R.A.I. Purchased. 3873.19
- New Archæological Lights on the Origins of Civilization in Europe. By Sir Arthur J. Evans, D.Litt., LL.D., P.S.A., F.R.S. Washington, 1917. Donor, The Smithsonian Institution, U.S.A. 3874.19
- Church of St. Mary, Dedham. By Gerald H. Rendall, B.D., Litt.D., LL.D., Hon. Canon, Chelmsford. (Reprint.) Donor, the Author. 3886.20
- Hunsbury, with a description of the relics found. By T. J. George. (Reprint.) Donor, the Author. 3895.20
- The Fauna and Flora of an Essex Common. By W. G. Clarke, F.G.S. (Reprint.) Donor, the Author. 3898.20
- List of Romano-British Architectural Remains. By Arthur H. Lyell, M.A., F.S.A., Cambridge, 1912. Purchased. 3965.20
- Summary of Annual Reports, 1915-1919, etc., of the Institute of Archæology, Liverpool. Donor, the Director. 3966.20



- President's Address to Members of the Norfolk and Norwich Naturalists' Society by Mr. Edward Bidwell, April 29, 1919. (Reprint.) Donor, the President. 3967.20
- Royal Commission of Ancient and Historical Monuments in Wales. Inventory IV., County of Denbigh, 1914. Donor, Major R. E. Mortimer Wheeler, M.C., Litt.D. 3973.20
- The American Museum Journal. Vol. XVIII., 1918. Donors, The Trustees of the American Museum of Natural History. 3975b.20

### **Albert Museum and Art Gallery.**

A number of Gifts for the Albert Museum and Art Gallery are here briefly referred to; they will be more fully described in due course. They include—

- Pair of Brocade Shoes, from Mr. Fred Roe, R.I.
- Print of Dr. Gilberd, from Mr. C. E. Benham, J.P.
- Box of Crag Shells, Early Valentine and Antique Silver Watch, from Dr. Philip Laver, F.S.A.
- Iron Cannon Ball of Siege date, from Mr. Wyncoll.
- Tracery Panel from old house, from Messrs. Beckwith.
- Old Engraving, Hythe Bridge, from Mr. H. J. Martin.
- Lead Piping from Leez Priory, from Mr. M. E. Hughes-Hughes, F.S.A.
- Fine 15th Century Wall Painting, on Boards, of the Virgin throned, from donor's house at St. Osyth, from Mr. Edgar Lilley.
- Portion of 17th Century Wall Stencilling, from Messrs. Joslins, Ltd.
- Water-colour Drawing of St. Botolph's, by donor and framed Photogravure of Dr. Gilberd, from Colonel Freeman, C.M.G.
- Natural History Group, Herons, from Mr. John Pettitt.
- Blanket of Colchester Bays, from Miss Woodroffe.
- Two framed silk-woven Pictures, from Mr. George Clark.
- Old Iron Travelling Chest, from Mr. E. Bentley Potter.
- Antique Plush Waistcoat, from Mrs. Fairhead.
- Two Antique Watches and parts, from Mr. Charles E. Basket.

Other donors are Mr. W. B. Nichols, J.P., Mr. David Burston, Mr. Eric A. Brough, Mr. S. E. Yelland, Mr. H. Mothersole, Miss Montagu, Mr. Norman Lott, Mr. W. J. Bather, Mr. Duncan Clark, Miss C. H. Taylor, Mr. Hills, Dr. E. Chichester, Mr. A. Long, Mr. T. J. McKenna, Mr. H. Lazell, Mr. W. T. Sanders, Mr. S. Bull, Mr. O. J. Durrant, Master Hugh Rowland, Master Norman Pettitt.



## Reports

RECEIVED FROM APRIL 1ST, 1918, TO MARCH 31ST, 1920

Ancient Earthworks, Committee of  
 Cambridge, Fitzwilliam Museum  
 Cambridge, Friends of the Fitzwilliam Museum  
 Cambridge, University Library  
 Cardiff, The National Museum of Wales  
 Chester, Society of Natural Science, etc  
 Ipswich, Borough Museums and Free Library  
 New York, American Museum of Natural History  
 Norwich, Castle Museum  
 Oxford, Ashmolean Museum  
 Salisbury, South Wilts and Blackmore Museums  
 Sheffield, Public Museum  
 Spalding, Gentlemen's Society  
 Sydney, N.S.W. Technological Museum  
 Taunton, Castle Museum  
 Washington, U.S.A., National Museum  
 Wisbech, Museum

*N.B.—Curators of Museums will much oblige by forwarding  
 their reports in exchange as issued.*

## List of Donors.

Airy, W. (London)  
 American Museum, Trustees of (New York)  
 Bacon, H. E. (Feering)  
 Bather, J. W.  
 Biddell, G. (Teddington)  
 Bidwell, Edward (London)  
 Bodger, J. W. (Peterborough)

Boots, Ltd.  
 Bosanquet, Professor R. C. (Liverpool)  
 Bridge, Mrs.  
 British Museum, Trustees of (London)  
 Brown, G. C.  
 Bugg, J.  
 Bull, S. (Nayland)  
 Burch, B. C.  
 Cater, Mrs. Adelaide  
 Carter, A. E. (Wickford)  
 Clark, Duncan W.  
 Clarke, W. G. (Norwich)  
 Chalmers, A. (Tendring)  
 Chaplin, R.  
 Cunnington, Mrs. H. B. (Devizes)  
 Dick, Major and Mrs. (Little Horkesley)  
 Elliston-Erwood, F. C. (Shooter's Hill)  
 Essex Field Club, Council of  
 Fairhead, Mrs.  
 Farrar, Miss (Stanway)  
 French, H.  
 Gardner, Edward (Boxted)  
 George, T. J. (Northampton)  
 Gilbert, William (London)  
 Godfrey, G. B. (Chignall)  
 Goodes, Aubrey (Aveley)  
 Green, Mrs. Councillor  
 Griffin, Mrs. A.  
 Gurney, F. J. (Ridgewell)  
 Haverfield, Professor F. (Oxford)  
 Haward, F. N. (Ealing)  
 Head, Charles  
 Hope, Linnæus E. (Carlisle)

Hutton, Alderman W. Coats  
 James, Alderman F. T. (Merthyr Tydfill)  
 Jameson, Dr. H. Lyster (West Mersea)  
 Kenworthy, Mrs. (St. Leonard's-on-Sea)  
 Lambert, F. (London)  
 Laver, Dr. Philip G.  
 Lazell, H.  
 Lee, B. W.  
 Lees, Mrs. F. R.  
 Lester, F. W.  
 Lewer, H. W. (Loughton)  
 Luard, J. (Birch)  
 Maldon Fishermen's Co operative Society (Maldon)  
 Marlar, J. F.  
 Marriage, Alderman W.  
 Marshall, V. H.  
 March, George  
 Mathews, P.  
 Millgate, T. W.  
 Moir, J. Reid (Ipswich)  
 Namur Museum, Curator of (France)  
 Neild, Mrs. R. (Little Leighs)  
 North, Lt.-Col. O. H. (Camer)  
 Parmenter, Rev. H. P. (Otten Belchamp)  
 Passmore, A. D. (Swindon)  
 Peers, C. R. (London)  
 Purkiss, A. E.  
 Ralling, T. J.  
 Reader, F. W. (London)  
 Rendall, Rev. Canon (Dedham)  
 Roe, F. G. (London)  
 Scott, G. B. (Chiswick)  
 Sheppard, T. (Hull)



Sheppard, W.  
Smallwood, G. W. (St. Austell)  
Smith, Reginald A. (London)  
Smithsonian Institution (Washington)  
Sumner, Heywood (Fordingbridge)  
Turner, Ashton (West Mersea)  
Walter, Dr. R. H. (Stoke-under-Ham)  
Ward, John (Cardiff)  
Watts, Alderman L. J.  
Williment, R. G. (Brentwood)  
Wheeler, Dr. R. E. (London)  
Wright, A. G. (Curator)



## FORMS OF BEQUEST.

I bequeath out of such part of my personal Estate as may by Law be bequeathed for such purposes, to the Mayor, Aldermen and Burgesses of the Borough of Colchester, the sum of

free from Legacy duty, for the Benefit of the Corporation Museum of Antiquities, to be expended in such a way as they may deem expedient; and I direct that the receipt of the Treasurer for the time being of the said Borough shall be an effectual discharge for the same Legacy.

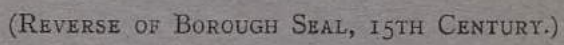
---

I bequeath\*

\*ANTIQUITIES

OR OTHER

OBJECTS to the Mayor, Aldermen and Burgesses of the Borough of Colchester (Free from Legacy Duty, which duty I direct shall be paid out of my pure personality), for the benefit of the Corporation Museum of Antiquities, either for Exhibition, or for such other purposes as they may deem expedient: and I further direct that the Receipt of the Town Clerk for the time being of the said Borough shall be an effectual discharge for the same Legacy.



(REVERSE OF BOROUGH SEAL, 15TH CENTURY.)



Borough of Colchester.

The Colchester Museum of Local  
Antiquities.

(Founded 1846.)



(OBVERSE OF BOROUGH SEAL, 15TH CENTURY.)

# REPORT

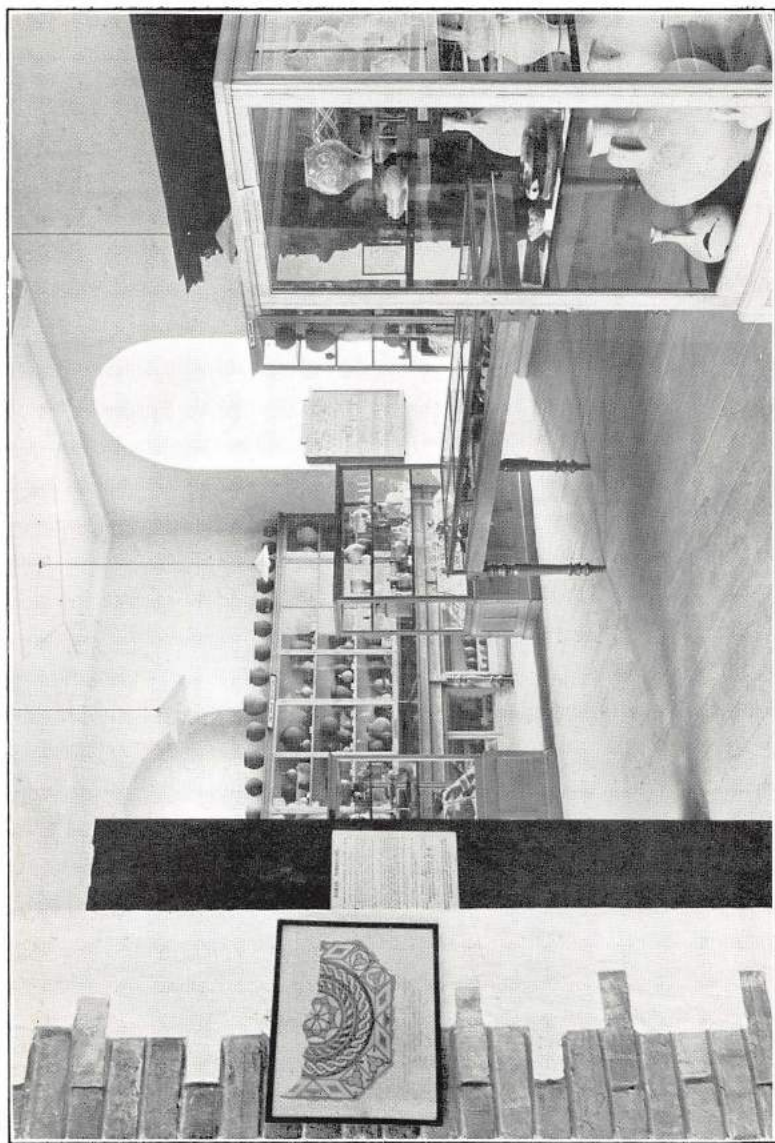
Of the Museum & Muniment Committee

For the Two Years ended 31st March, 1922.

Price Sixpence.



FRONTISPIECE.



*Photo by Messrs. Gill & Son.*

THE NEW ROMANO-BRITISH ROOM.



Borough of



Colchester.

---

THE  
Corporation Museum  
OF  
LOCAL ANTIQUITIES

(FOUNDED 1846).

REPORT  
OF THE  
Museum and Muniment Committee

For the Two Years ended 31st March, 1922.

---

**PRICE—SIXPENCE.**

---

COLCHESTER :  
CULLINGFORD AND CO., LTD.  
1922.

# Committee and Officers.

---

## COMMITTEE, 1920-21.

Alderman W. G. BENHAM, F.S.A., F.R.Hist.S., J.P., *Chairman*.

Councillor A. M. JARMIN, F.R.Hist.S., J.P., *Deputy-Chairman*.

THE WORSHIPFUL THE MAYOR (Councillor Arthur J. Lucking).

Alderman WILSON MARRIAGE, J.P., C.C.

„ W. COATS HUTTON, J.P.

Councillor G. H. DURRANT.

„ P. W. ROWLAND, M.D.

## 1921-22.

Alderman W. G. BENHAM, F.S.A., F.R.Hist.S., J.P., *Chairman*.

Councillor A. M. JARMIN, F.R.Hist.S., J.P., *Deputy-Chairman*.

THE WORSHIPFUL THE MAYOR (Councillor Wasey Chopping).

Alderman WILSON MARRIAGE, J.P., C.C.

„ W. COATS HUTTON, J.P.

Councillor J. T. BAILEY, J.P.

„ P. W. ROWLAND, M.D.

*The following Members represent the  
Essex Archæological Society:—*

Mr. PHILIP G. LAVER, F.S.A.

Mr. DUNCAN W. CLARK, A.R.I.B.A.

Mr. HARRINGTON LAZELL.

## Curator :

ARTHUR G. WRIGHT.

## Assistants :

W. F. BELL.

B. J. SIMPSON.



# The Corporation Museum.

*To the Mayor and Council of the Borough of Colchester.*

GENTLEMEN,

We beg to submit our Report on the Corporation Museum for the two years ended 31st March, 1922.

The number of visitors during the past two years shows a somewhat heavy reduction on the previous two years, partly owing to the withdrawal from the town of a large number of troops due to demobilisation and partly to the closing of the Museum for several weeks for structural alterations. The total number of visitors for the two years ended March 31st, 1922, was 77,586, as compared with the record number 97,640 for the previous two years which ended on March 31st, 1920.

Happily, the additions to the Museum, both by gift and purchase, are as interesting and numerous as heretofore.

During the year 1920, the Castle became the property of the Corporation, and it was decided to convert the Library into an Exhibition Room, which has been named the Romano-British Room, and is intended to be devoted to antiquities of that period. The change was made by opening out three recesses in the north wall, dividing the Library from the Corridor, which entailed the removal of the whole of the Joslin Collection of Burial Groups and its re-arrangement in the new gallery, or room, on its completion.

On Good Friday afternoon, March 25th, 1921, the Museum was re-opened to Members of the Essex Field Club then visiting Colchester for their Spring Excursion, who were entertained at tea by your Chairman in the new Romano-British Room, the public being re-admitted the following day.

The Jarmin Collection has been transferred to the new Romano-British Room and re-arranged in two new cases on either side of the fire-place.





Four of the Island Cases containing the collections of Roman Glass Ware, Samian, Buff and Painted Wares, and Bronzes have also been transferred from the Crypt, and the collections re-arranged.

The window cases in the Corridor, vacated by the removal of the Joslin Collection, have been allocated to the Collection of local Flint and Stone Implements, which has been further enriched by the addition of a fine series of local specimens collected by the late Alderman Henry Laver, F.S.A., and deposited on loan by his sons, Mr. H. Edward Laver and Dr. Philip G. Laver, F.S.A.

Your Committee and Curator deplore the loss by death, after a long illness, of their late assistant, ex-Chief Police Inspector Theobald Smith, who had been in the service of the Museum nearly 20 years. He was devoted to his work and always eager to absorb fresh knowledge of the antiquities by which he was surrounded, in order that he might become an efficient guide to the numerous visitors, who held him in much esteem.

W. GURNEY BENHAM, *Chairman.*

ARTHUR G. WRIGHT, *Curator.*

## Visitors to the Museum.

		1920-21.		1921-22.	
		Days open.	Attendance.	Days open.	Attendance.
April	...	25	4763	26	2795
May	...	26	3943	26	3381
June	...	26	3265	26	3296
July	...	26	4212	26	4219
August	...	26	9569	27	7887
September	...	26	4327	26	5468
October	...	26	2496	26	2862
November	...	26	1781	26	1741
December	...	25	1327	26	1620
January	...	26	1919	26	1067
February	...	*5	814	24	1774
March	...	*6	1223	27	1837
<i>Total</i>	...	<u>269</u>	<u>39639</u>	<u>300</u>	<u>37947</u>

\*Closed for alterations, February 16th—March 25th.

### BANK HOLIDAY ATTENDANCES.

Easter Monday, 5th April, 1920	...	...	884
„ 28th March, 1921	...	...	373
Whit Monday, 24th May, 1920	...	...	644
„ 16th June, 1921	...	...	486
August Monday, 2nd August, 1920	...	...	491
„ 1st August, 1921	...	...	348
26th December, 1920 and 1921	...	...	closed.

\*The total number of Visitors for the year ending March 31st, 1903, was 20,887 ;  
 1904, was 27,039 ;    1905, was 28,408 ;    1906, was 29,588 ;    1907, was 31,078  
 1908, was 30,875 ;    1909, was 29,842 ;    1910, was 34,453 ;    1911, was 29,423  
 1912, was 27,298 ;    1913, was 32,149 ;    1914, was 29,564 ;    1915, was 49,689  
 1916, was 44,810 ;    1917, was 46,437 ;    1918, was 47,610 ;    1919, was 51,496  
 1920, was 46,144 ;

## The Colchester Museum

IS OPEN DAILY FROM

1st April to 30th September—10 a.m. till 5 p.m.

1st October to 31st March—10 a.m. till 4 p.m.

AND CLOSED ON

Sundays, Good Friday, and Christmas Day, and such other days as the Committee may order.

ADMISSION FREE.

---

It is urgently requested that any discovery of Archæological interest in the neighbourhood may be brought to the notice of either the Chairman or the Curator as early as possible.

The Curator will be pleased to give any information in his power and may be seen daily, Museum engagements permitting.

---

Postcards of many of the most important antiquities and a new series showing the Castle from various points of view, may be obtained in the Museum at One Penny each.

---

Curator           ...           ARTHUR G. WRIGHT.



# List of Additions to the Museum

BY GIFT AND PURCHASE.

*From 1st April, 1920, to 31st March, 1922.*

All the objects were found in Colchester unless otherwise stated.

## STONE AND BRONZE AGES.

Flint Flake, found by donor at Great Horkesley. Palæolithic. Donor, Mr. S. Bull. 3986.20

Two Flint Scrapers, found by donor on Wolves Farm, Tendring. Neolithic. Donor, Mr. Adam Chalmers. 3990.20

Two roughly chipped Implements of cherty flint, found by donor at Ridgewell Hill. Donor, Mr. F. J. Gurney. 3993.4.20

Flint Flake, broken.—See under Early Iron Age.

Socketed Bronze Axe, with loop. Found at Great Wakering. Late Bronze Age. Purchased. 4008.20

Four worked Flints, found by donor on Wolves Farm, Tendring. Donor, Mr. Adam Chalmers. 4041.21

Five Flint Implements and Flakes, found by donor at Walton on the Naze. Palæolithic. Donor, the Curator. 4080.21

Large Flint Flake, found by donor at Walton on the Naze. Neolithic. Donor, the Curator. 4081.21

Three Flint Implements, found by donor in the G.E.R. Ballast Pit, Stanway. Palæolithic. Donor, the Curator. 4082.21

Hammer Stone of Flint, found by donor in the G.E.R. Ballast Pit, Stanway. Palæolithic. Donor, Master Norman Pettitt. 4083.21

Four Flint Implements of pointed and ovate types. Found in Gant's Pit, Dovercourt. Palæolithic. Donor, Mr. Walter B. Nichols, J.P. 4105.21

For an account of this Site, see *Proceedings, Prehistoric Society of East Anglia*, vol. 1., page 360., plates.

Small ovate Implement of ochreously stained flint, found at Wormingford. Flake ditto, Colchester Cemetery, both Palæolithic. Stone Rubber, Walton. Neolithic. Donor, the Curator. 4107-9.21

Stone Rubber and ten Flint Flakes and Scrapers, found by donor at Walton on the Naze. Neolithic. Donor Lt.-Colonel Oliver H. North, D.S.O. 4110, 4112.21

Heavy Flint Implement, much rolled, with orange-brown patina, found by donor at Walton on the Naze. Palæolithic. Donor, Lt.-Colonel Oliver H. North, D.S.O. 4111.21

Three Pot-Boilers from excavations on an early site in Norfolk. Donor, Miss Nina F. Layard, F.S.A., F.L.S. 4113.21

See *Nature*, July 14, 1921, for a brief account of the site.

Neolithic Flint Pick.—See under Deposited.

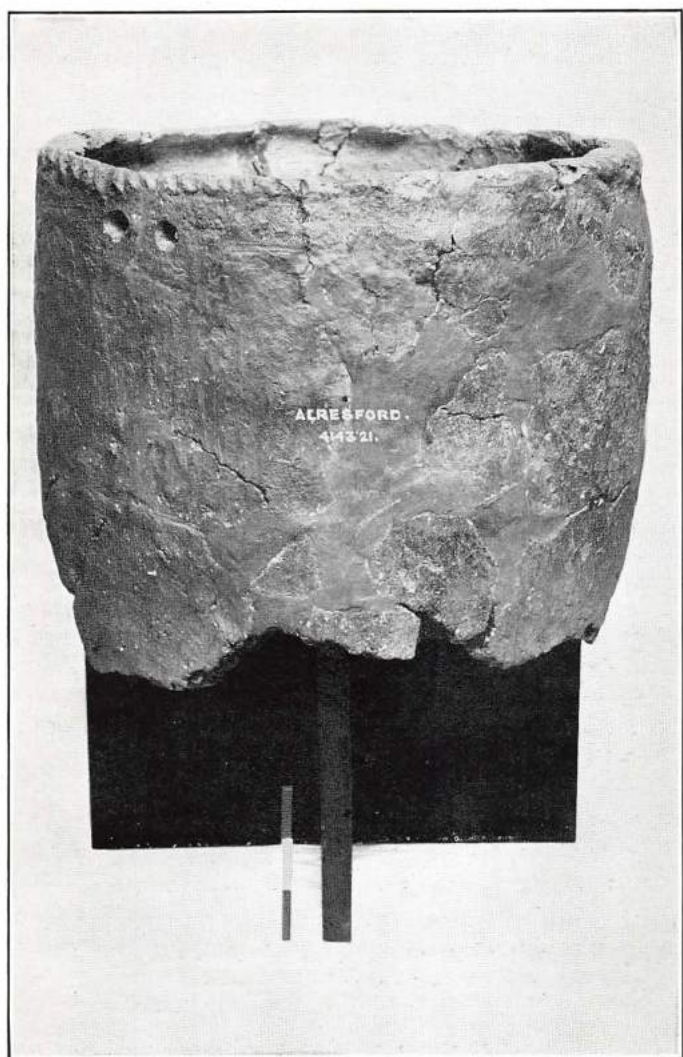
Ovate Implement of lustrous grey flint, slightly iron-stained. Found by donor on surface of field N.E. of Baker's Bridge. Palæolithic. Donor, the Curator. 4119.21

Flint Implement of Chelles type, Palæolithic; Stone Rubber and Flint Scraper or Plane. Neolithic. Found by donor at Walton. Donor, the Curator. 4140-42.21

Portion of Cinerary Urn of coarse brown ware, partly restored, the brim ornamented with "finger-tip" impressions. The urn had evidently been used for domestic purposes and cracked on two sides, two holes having been drilled at head of each crack through which thongs were passed for repair. Found when digging foundations for a cottage near Alresford Grange, inverted over the burnt bones. Late Bronze Age, about 900-650 B.C. Donor, Alderman Wilson Marriage, J.P. (*Plate, I.*) 4143.21

A similar urn ornamented and perforated for repair in the same way is figured in Abercromby's *Bronze Age Pottery*, vol. ii., plate xcv., 470c. See also *Archæologia*, vol. xliii., plates xxix., xxx. and Annual Report, 1912, p. 9 and plate ii.

Chisel of Grey Flint with ground faces and cutting edge. Found by donor at Great Bentley. Late Neolithic. Donor, Mr. J. R. Girling. 4161.21



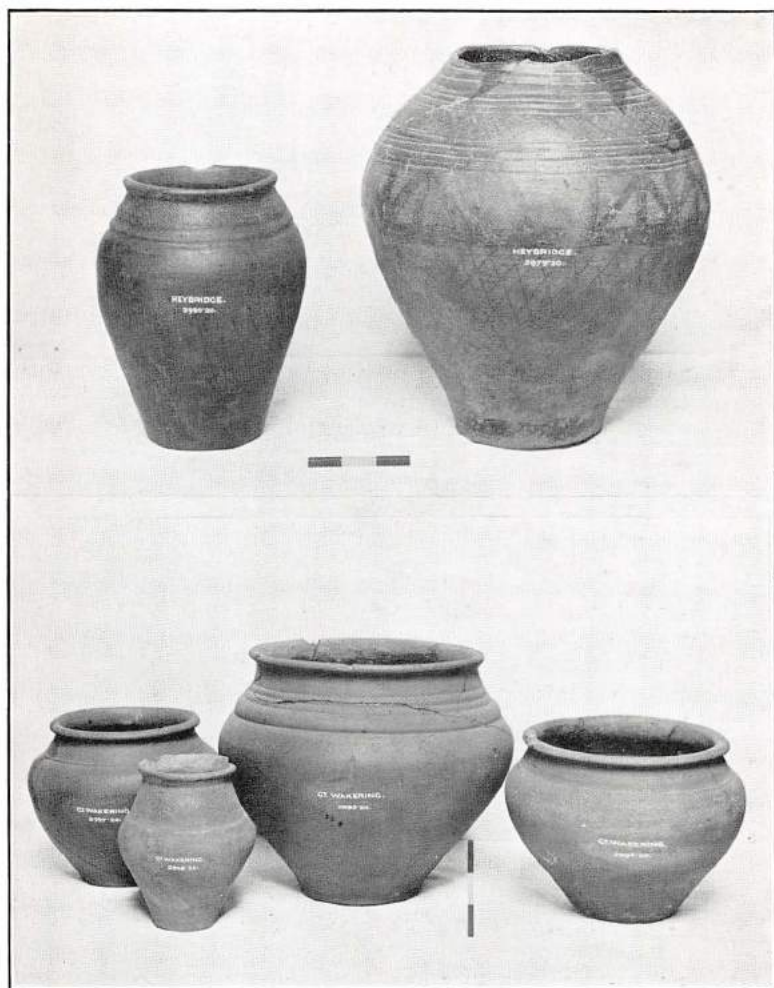
*Photo by the Curator.*

See page 8, No. 4143.21.









*Photo by the Curator.*

See page 9, Nos. 3979, 3980 and 3995-98,20.



Small Scraper and worked Flake of Flint, found at Boxted by donor's son. Neolithic. Donor, Mr. E. T. Lingwood.

4173-4.22

Two large Cores and several Flakes, some with secondary working, of black flint. Found by donor in his garden. Probably Neolithic. Donor, Revd. H. P. Parmenter.

4185.22

### EARLY IRON AGE (LATE-CELTIC).

Large Pot of dark brown ware, rim wanting, ornamented with zones of trellis pattern and panels of arrow-head design between cordons. Found at Heybridge. Late-Celtic. Donors, the Heybridge Parish Council. (*Plate, II.*).

3979.20

Pot of dark brown ware, polished exterior, ornamented with tooled trellis pattern and shallow cordons. Found at Heybridge. Late-Celtic. Donors, the Heybridge Parish Council. (*Plate, II.*).

3980.20

Fragment of Pot of coarse dark gritted ware, with loop handle. Found at West Mersea. Late-Celtic. Donor, Mr. Ashton Turner.

3984.20

Burial Group, consisting of four vessels found together in grave—(1) Large Cinerary Pot of light brown ware with darker coating; graduated cordons on rim and shoulder. (2) Pot of similar ware with bead rim, cordon on shoulder. (3) Pot, similar to above, beaded base. (4) Small Olla, or Beaker, of thin grey paste with reddish-buff coating, ornamented on sides with vertical tooled lines and three bosses, foot beaded and grooved beneath. Found at Great Wakering. Late-Celtic. About 1 to 50 A.D. (*Plate, II.*).

3995-98.20

Burial Group of three vessels found together in grave—(1) Cinerary Pot of greyish-brown paste with traces of darker colour coating, slight cordon on shoulder, beaded and slightly hollow base. (2) Small Pot of light brown paste with darker coating, rim missing, slight cordon on shoulder, rude spiral under base. (3) Small carinated Bowl of dark paste, with traces of black *vern*is, or polish. Found at Great Wakering. Late-Celtic. About 1 to 50 A.D. (*Plate, III.*).

Purchased.  
3999-4001.20

Burial Group of four vessels found together in grave—

(1) Small Pedestalled Vase of hard red-brown paste, slightly micaceous, with dark exterior, everted beaded rim. Partly restored. (2) Olla, or Beaker, of light red paste with traces of darker coating, flat everted rim grooved for cover, tooled groove on shoulder and on edge of slightly expanding base. (3) Olla of dark brown paste with polished surface, beaded rim and slightly expanding beaded foot, concentric grooving on under side. (A similar pot is in the Southminster group, but with plain base). (4) Small Pot of grey paste with red-brown exterior, beaded everted rim grooved inside for cover, beaded base. Portions of a Bronze Fibula and a Flint Flake were found in this pot, and are described below. Found at Great Wakering. Late-Celtic. About 1 to 50 A.D. (*Plate, III.*). Purchased.

4002-5.20

Portion of Bronze Fibula. Found in pot 4005, in Group 3 of Late-Celtic Burial. Found at Great Wakering. Purchased.

4006.20

Half of a Flint Flake, with bulb of percussion, found in pot 4005, in Group 3 of Late-Celtic Burial. Found at Great Wakering. Purchased.

4007.20

Spindle Whorl of baked clay, perforated. Found at Great Wakering. Late-Celtic. Purchased.

4009.20

Pot Cover of tile-red ware, with incurved rim. Late-Celtic. Donor, Dr. Philip G. Laver, F.S.A.

4012.20

For similar cover, see Group of Late-Celtic Urns in Annual Report, 1909, plate x., and *Transactions, Essex Archaeological Society*, vol. ix., p. 348.

Fragment of Pot with loop handle springing from top of rim, with imitation studs or rivet heads below. Found at Heybridge. Late-Celtic. Donor, Dr. Philip G. Laver, F.S.A. (*Plate, V.*).

4013.20

Annular Bead of blue glass with white circles inlaid. Late-Celtic. Donor, Mr. E. C. Sewell.

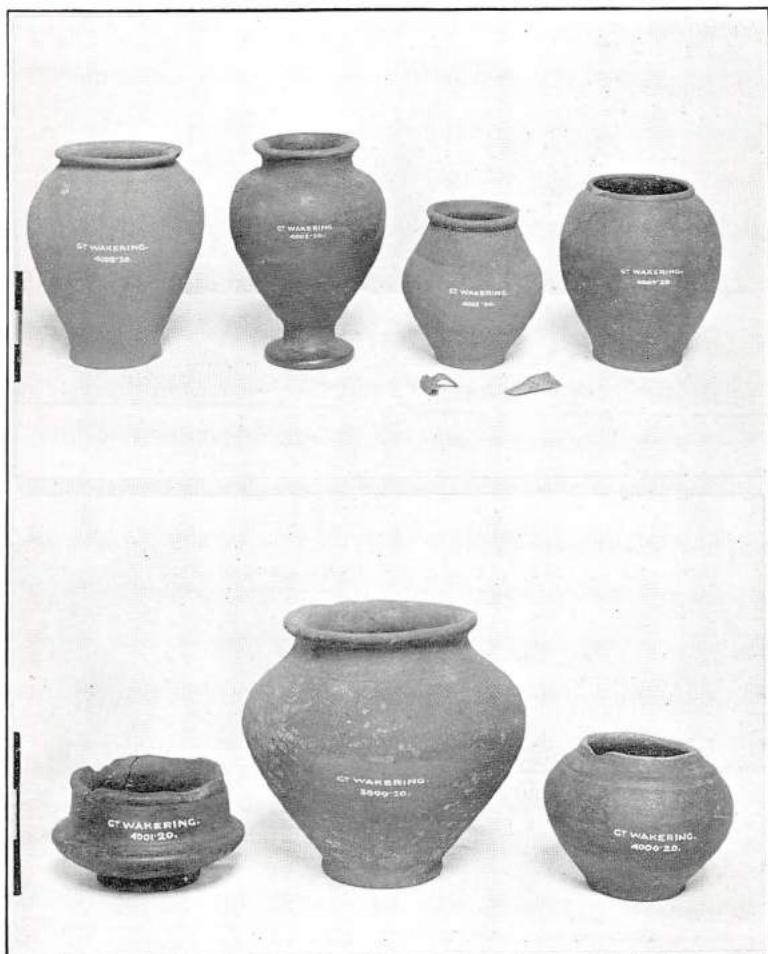
4038.21

This bead found at Colchester, was formerly in the Robert Day Collection, Cork. Similar beads were found in the Early Iron Age graves at Arras, Yorks. See *Archæologia*, xliii., 497.

Fragments of Flagon of tile-red ware, with buff slip coating. Found at Heybridge. Late-Celtic. Donors, the Heybridge Parish Council.

4069.21





*Photo by the Curator.*

See pages 9 and 10, Nos. 3999-4001, and 4002-5.20.





Ancient British Silver Coin—See under Coins.

Thick Bronze Ring. Found in Priory Street. Probably Late-Celtic. Donor, Dr. Philip G. Laver, F.S.A.

4156.21

Several Fragments of Late-Celtic and Belgic wares. Found in donor's garden. Donor, Mr. Vernon E. Marshall.

4165.21

Vase of Belgic Ware—see under Deposited.

### ROMANO-BRITISH PERIOD.

Fragments of various Roman wares. Donor, Mr. J. F. Marlar.

3976.20

Body of Ampulla of red ware, neck and handle wanting, moulded base with circular groove under. Neck of globular Amphora, one handle wanting. Fragment of "Samian" Bowl (Form 37) with panel and medallion decoration. Found at West Mersea. Roman. Donor, Mr. Ashton Turner.

3981-3.20

Small Bead of blue glass. Found at Balkern Gate. Roman. Donor, Dr. Philip G. Laver, F.S.A.

4010.20

Small Pot of coarse black ware with gritty surface. Found in garden Roman Road. Roman. Purchased.

4011.20

Ampulla or Vase of grey ware.—See under Deposited.

Bone Hairpin. Roman period. Purchased.

4025.20

Small bulbous Beaker of fine grey ware with tooled exterior, long neck and hollow foot, groove above bulge. Roman, 3rd to 4th Century, A.D. Purchased.

4039.21

Fragment of large Pot of grey ware with bold recurving lip, narrow bead at junction of body. Roman, 3rd to 4th Century, A.D. Purchased.

4040.21

Cinerary Urn of coarse grey ware, imperfect. Found in donor's garden. Roman. Donor, Major J. O. Parker.

4046.21

Quadrant and Triangular Bricks. Found in donor's garden, North Hill. Roman. Donor, Mr. A. W. Frost.

4050.1.21

Small Triangular Brick. Found in Union Grounds. Roman. Donor, Dr. Philip G. Laver, F.S.A. 4060.21

Fragments of red, buff, and grey wares, base of Amphora, and fragments of "Samian" Cup (Form 27). Found close to Roman Wall in donor's garden, Balkern Lane. Roman. 1st Century, A.D. Donor, Mr. Askew.

4061.21

Large Brick, or Tile, 16ins.  $\times$  11ins.  $\times$  1 $\frac{3}{4}$ in. From the foundation of the so-called Pharos at West Mersea. Roman. Donor, Mr. Ashton Turner.

4062.21

Spoon of white bronze, the oval bowl terminates in a volute to which the stem, or handle is attached. Found after filling in of excavations in Park. Roman, 2nd Century, A.D. Purchased.

4078.21

For an interesting account of silverspoons of a similar type found at Dorchester, see *The Antiquaries' Journal*, vol. ii, No. 2.

Fragment of large Olla of hard grey ware with soapy surface, ornamented with narrow cordon and incised circles. Found in donor's garden in Queen's Road. Roman, 1st Century, A.D. Donor, Mrs. J. Oxley Parker.

4079.21

Portion of Skull of small child. Bone Tool with incised head. Portion of Clay Ring. Fragment of Black Ware. Bronze Fibula with coiled spring. Stem of Bronze Nail. Lump of Bronze. All found on surface of Roman Road, exposed during excavation on East Hill, near East Lodge, 1921. Roman period. Donor, Dr. Philip G. Laver, F.S.A.

4089.21

A portion of the curbing of the Roman Road, built of Septaria, 2 feet wide with off-set, was exposed at same time.

Engraved Stone from bezel of ring. Roman. Purchased.

4099.21

Bone Spoon (*Cochlear*), point of stem wanting. Roman. Purchased.

4100.21

Small bronze Key, probably Roman. Purchased.

4101.21



Portion of rim of Mortarium of buff ware with rectangular stamp of potter, **L.Y.A.** Found under tessellated floor near the Church, West Mersea. Roman, 1st Century, A.D. Donor, Mr. Ashton Turner. 4155.21

Portion of rim of Mortarium of reddish-buff ware, with potter's stamp, **CLX/////**. Six fragments of grey ware and a circular Tessera. Roman. Donor, Dr. Philip G. Laver, F.S.A. 4163.21

Belgic Vase.—See under Deposited.

Large globular Amphora, imperfect. Portions of four buff-ware Tazzas. Two small Lamps of reddish-buff and black wares, slightly micaceous, handles broken. Found near the Military Hospital. Roman, late 1st or early 2nd Century, A.D. Donor, Major A. C. L. Theobald, D.S.O. 4172.22

These are said to have been found together with incinerated bones, the Amphora forming a small vault or tomb. See Annual Reports, 1910, p. 25, plate v.; 1918, p. 18; 1920, p. 9, plate vi.

Small Patera or Saucer of hard greyish-brown ware with black exterior, straight sides slightly everted at brim. Roman, about 80-120 A.D. Donors, Messrs. H. Everett & Son. 4175.22

A "second brass" coin, undecipherable from corrosion was found near it.

Various objects found in sinking a petrol tank in Culver Street, including upper portion of Glass Bottle, fragments of "Samian" and other wares, Tesserae, etc. Roman period. Donors, Messrs. Burton, Son & Sanders, Ltd. 4183.22

Fragments of Pottery and piece of Bronze found on site of "Othona," Bradwell-on-Sea. Roman period. Donor, Mr. A. W. Clapham, F.S.A. 4184.22

### ANGLO-SAXON PERIOD.

Small tubular Bead of red earthenware. Found in garden by donor. Probably Saxon. Donor, Mr. William Taylor. 4124.21

# MEDIEVAL AND LATER PERIODS.

Jug of red ware with yellow glaze round lip. About early 19th Century. Donor, Mr. J. F. Marlar. 3976-20

Bowl of red glazed ware with yellow slip decoration. Probably early 19th Century. Donor, Mr. S. Bull. 3987.20

Four Iron Castings, Otter Trap and Cavalry Sword, blade reduced. All probably of late 18th Century. Donor, Mr. E. J. Wilton. 3989.20

Two Drain Pipes of red ware. Probably early 19th Century. Donor, Mr. F. J. Gurney. 3991-2.20

Large Spirit Cask or Tun; the head is elaborately carved with wreath of grapes and leaves within which is a Furnace, Still and Vat, surmounted by a dove flying, with initials **I A M** and date, 1726, all in relief and painted in gold and colours. Oak Stand for same with carved bosses of concentric circles. This tun was formerly the property of Messrs. Austen & Son, Wine and Spirit Merchants, Dedham; established 1726, closed 1920. (*Plate, IV.*). Donor, Mr. G. B. Cecil Moseley. 4018.20

Glass Stamp from Wine Bottle with initials **I.W.** and Colchester in relief. 18th Century. Donor, Mrs. Adelaide Cater. 4024.20

Five Iron Castings. (1) Bust of Cherub or Cupid. (2) Elephant. (3) Farm Yard Scene. (4) Oval Medallion with classical figure. (5) Ditto. Late 18th or early 19th Century. Donor, Mr. E. Wilton. 4027.20

Circular lead Tobacco Box with negro's head on lid and bands of godroon-like ornament in relief on sides. The box shows traces of painting in orange, red and green. 18th Century. Donor, Dr. Philip G. Laver, F.S.A. 4028.20

Iron Hip-hook for Trace Horse, about 100 years old. Donor, Mr. C. Brown. 4030.21



*Photo by the Curator.*

See page 14, No. 4018.20.





- Salt Cellar of white glazed Delft ware. Portion of white glazed Delft Tile. Antique Door Latch. Wooden Nutcracker. 18th Century. Purchased. 4031-4.21
- Copper Thumb Ring, originally gilt, with plain bezel and ornamented band. Found at Dedham. Probably 15th Century. Purchased. 4036.21
- Leaden Pump-head with box ornamented in relief, with initials **R-D** and date, 1751. Donor, Mr. F. Lankesheer. 4042.21
- Leather Shoe, about 1500, found on donor's premises in High Street. Donor, Mr. F. Lankesheer. 4043.21
- Bird Hopper in green-glazed buff ware. Tudor period. Donor, Mrs. Adelaide Cater. 4048.21
- Iron Cannon Ball, found below Clark's meadow. Probably Siege period. Donor, Mr. T. W. Robinson. 4049.21
- Three Iron Castings. (1) St. George. (2) An Angel. (3) Head of Satyr. 18th or early 19th Century. Donor, Mr. E. Wilton. 4053-5.21
- Colt-breaker's Iron Bit. Early 19th Century. Donor, Mr. E. Wilton. 4056.21
- Large Spirit Bottle of olive green glass with wide "kick" in base. About 1750. Donor, Mr. G. M. Rashbrook.
- Italian Iron ("Tally" Iron) on circular stand. Donor, Miss M. Mottram. 4065.21
- Two Drain Pipes of coarse red ware, formed by folding a flat tile to a ovoid-shaped tube. Found with others on allotments near Cock Watch Farm. Donor, Mrs. Chubb. 4066.21
- Steel Joint Fork, engraved with initials **R.E.** and date, 1651; the handle terminates in two volutes. Purchased. 4074.21
- Steel Lazy Tongs with Tobacco-pipe Stopper on side. Purchased. 4075.21

Bundle of Straws and Hank of Straw Plait, made about 50 years back by Mrs. Halls at Sible Hedingham. Donor, Mrs. Turner. 4084.21

Small piece of "Wattle and Daub" with portion of lath. From old house at St. Osyth. Donor, Dr. Philip G. Laver, F.S.A. 4088.21

Small collection of leaden Bay Seals. Purchased. 4114.21

Tally Clerk's Ink-well of glass. Usually worn suspended by a string from coat-button or button-hole. Early 19th Century. Donor, Dr. Philip G. Laver, F.S.A. 4115.21

Baluster of Stair-case Fence or Altar Rail, turned and spirally fluted in Norway fir-wood. From Colne Valley. Time of George II. (1727-1760). Donor, Mr. William Stevenson. 4116.21

Riding Whip, silver-mounted, used by donor 60 years ago. Donor, Mr. Thomas Brett Daniell. 4117.21

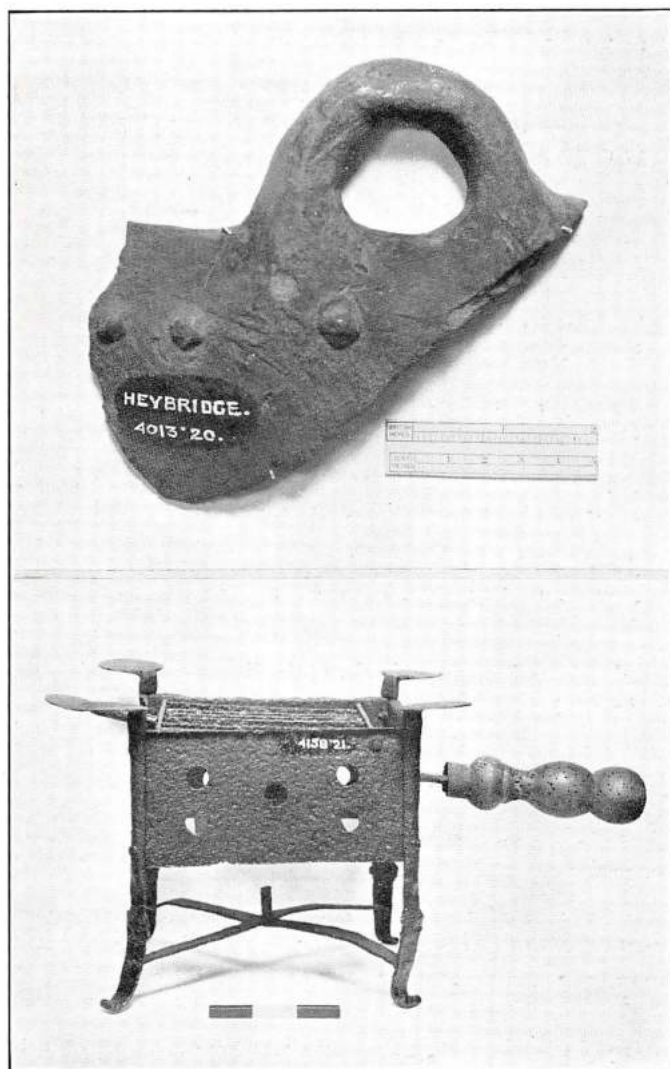
Set of Scales and Weights in oval wood box with stamped design on lid and brass fastening. Label inside lid, of *John Harris, Scale-Maker*, at | the Sign of the Sun and Scales | against the Church in *Rood-Lane*, | near *Fenchurch-Street*. Selleth all Sorts of Beams, Scales, Weights, and Stillards. Donor, Mr. William Taylor. 4120.21

Pocket Candle Box of japanned metal with folding side, carrying candle and division for matches with folding lid. Early 19th Century. Donor, Mr. William Taylor. 4121.21

Pocket Grain Sifter, used by corn chandlers for finding amount of dirt in sample, in turned wood with brass mount and wire sieve. Early 19th Century. Donor, Mr. William Taylor. 4122.21

Embossed white metal Belt Clasp of 2nd Essex Volunteers with Badge, a trumpet or horn surmounted by a crown within a wreath of laurel leaves. Donor, Mr. William Taylor. 4123.21





*Photo by the Curator.*

See pages 10 and 17, Nos. 4013.20 and 4158.21.



- Small Ink Pot of Fulham Ware with embossed wreath round sides. Purchased. 4126.21
- Carved bone Bodkin Case. Purchased. 4127.21
- Pepper Mill of turned oak with brass mounts. Early 19th Century. Purchased. 4128.21
- Small bone Implement with scallop-shell carved in relief at one end, the other having a flat serrated terminal. Found in a garden at Pleshey. Purchased. 4130.21
- A number of Sherds of Pottery found by donor in the Potters' Field, Sible Hedingham. 14th-15th Century. Set of eleven large and small Marbles found by donor in his garden. Probably Medieval. Small bronze Key found at Leez Priory. 14th Century. Donor, Mr. R. V. Keymer. 4131-3.21
- Circular horn Snuff Box and small steel Needle Case. Early 19th Century. Donor, Mr. William Taylor. 4144-5.21
- Military Button with badge in relief—a shield bearing 3 cannon with 3 balls above. Donor, Mr. Councillor A. M. Jarmin. 4149.21
- Terra-cotta Bust of an old woman with frilled cap, on a hollow pedestal. Probably a garden ornament. Found at Mount Bures. Purchased. 4150.21
- Constable's Staff painted blue with black bands and lettered in two lines **IV** | **W.R.** with crown above. From Peldon. Purchased. 4151-21
- Pair antique Spectacles in oblong metal case. Early 19th Century. Donor, Mr. William Tedder. 4154-21
- Wrought-iron Plate Rack for keeping plates hot before fire. Early 19th Century. Purchased. 4157.21
- Small iron Grill with brazier beneath. Early 19th Century. Purchased. (*Plate, V*). 4158.21
- Raffle Outfit consisting of Dice Box, Tray, and a pair of Dice. Formerly part of the furniture of the "Wig and Fidjett Inn" at Boxted. Donor, Mrs. Ellen Clark. 4162.21



Lady's Satchell made of string in what are called Solomon's Knots. Early 19th Century. Donor, Miss Cooper.

4164.21

Fine wrought-iron Hake or Crane. Formerly in Bollington Hall, Essex. Purchased. (*Plate, VI.*)

4166.21

Iron Fireback with Royal Arms supported by Lion and Dragon with motto beneath—*Dieu et mon Droit*. From old house at Dedham. Elizabethan. Purchased. (*Plate, VI.*)

4167.21

Dutch Hearth Tile with sea view, houses and ships in polychrome octagon with blue surround. Found at Canvey Island. About 1700. Donor, Mr. C. H. Butcher.

4168.21

Iron Crusie or Hanging Lamp. Found at Prittlewell. About 18th Century. Purchased.

4176.22

Bone Knife with herringbone pattern incised on handle. Found at Prittlewell.

4177.22

Grandfather Clock, by Mitchell, Colchester, in oak case. Donor, Dr. Philip G. Laver, F.S.A.

4182.22

Iron Horse Shoe and Swivel Ring. Found together by donor. Tudor period. Donor, Mr. H. E. Ellis.

4186.22

### COINS, TOKENS, MEDALS.

"First Brass" Coin of Nero (54-68 A.D.) *Rev.*, Seated figure holding a Victory; in field, S.C., Exergue, **ROMA.**, fine condition. Found at Stanway. Purchased.

3988.20

"Second Brass" Coin of Carausius, (287-294 A.D.) *Rev.*, **VICTORIA AVG (?)** Donor, Mrs. Bugg.

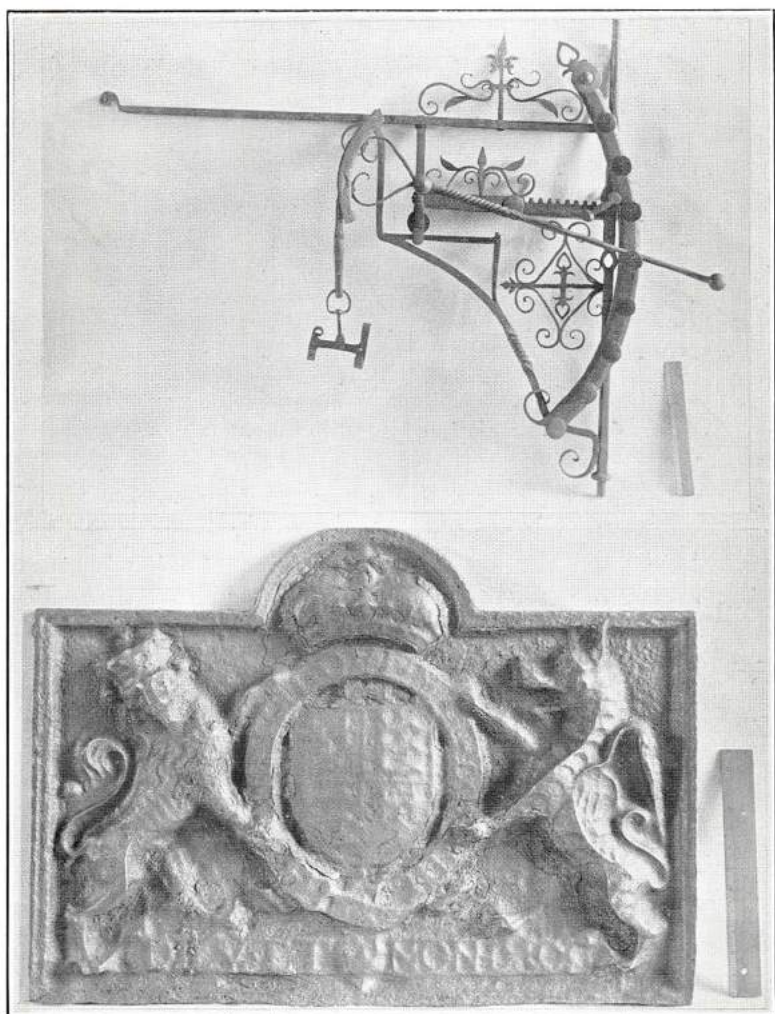
4015.20

Farthing of George III., 1799. Donor, Mr. Harrington Lazell.

4023.20

"Second Brass" Coin of Domitian, (81-96 A.D.) *Rev.*, **MONETA AVG.**, S.C. in field. Donor, Mr. Hearsum.

4029.21



*Photo by the Curator.*

See page 18, Nos. 4166, 4167.21.





- Silver Groat of Henry VII., (Hawkins 273.7). Purchased.  
4035.21
- Threepenny-bit of Victoria, 1888. Donor, Mr. H. E. Laver.  
4037.21
- Silver Denarius of Antoninus Pius, (138-161 A.D.) *Rev.*,  
**CONCILIA.** Donor, Mr. A. W. Frost. 4044.21
- Colchester Bay Token, 1794. Donor, Mr. F. Bagley.  
4052.21
- Penny of William IV., 1834. Donor, Mr. Shippey. 4058.21
- Colchester Bay Token, 1794. Donor, Mr. George Biddell.  
4059.21
- Sixpence of Elizabeth, 1570. Donor, Mr. W. L. Rigg.  
4063.21
- Bronze Medal with ring for suspension. *Obv.*, Arms of  
County, surrounded by garter, in a label, **TUEBOR.**  
*Rev.*, in half circle, **ESSEX LIGHT DRAGOONS.**  
Within a laurel wreath, **REWARD FOR MILITARY**  
**VIRTUE FROM COL. MONTAGUE BURGOWNE.**  
Purchased. 4064.21  
Colonel Montague Burgoyne was M.P. for Dunwich and Colonel of Essex  
Light Dragoons, 1819. Died 1836.
- "Second Brass" of Antoninus Pius (138-161 A.D.). Found  
when repairing wall on top of Castle, 1921. 4067.21
- Three Roman Coins (1) "Small Brass" of Constantine the  
Great, *Rev.*, **GLORIA EXERCITVS** (2) Another of  
Constantine family, same reverse. (3) Double struck  
coin of Claudius Gothicus. *Rev.*, **VIRTVS AVG. (?)**  
Purchased. 4068.21
- Three Anglo-Saxon Silver Pennies of Aethelred II., Canute  
and Edward the Confessor, in fine state. Struck at  
Colchester. Donor, Dr. Philip G. Laver, F.S.A.  
4071-73.21
- Ancient British Silver Coin, (of the **ICENI.**) probably in-  
scribed **ECE** below horse on reverse. *cf.* Evans, Coins  
of the Ancient Britons, pl. xv. 1-4. Purchased. 4091.21  
Kindly identified by Keeper of Coins, British Museum.

Six Coins of various dates. (1) Plated Denarius of Salonina, wife of Gallienus. (2) "Second Brass" of Vespasian. *Rev.* **PAX AVG.** (3) "First Brass" of Antoninus Pius, *Rev.* **REX ARMENIS DATVS.** (4) Silver Halfpenny of Elizabeth. (5) Farthing of George IV., 1825. (6) Ditto, 1828. (6) Twopenny piece of George III., 1797. Purchased. 1492-98.21

"Second Brass" Coin of Trajan, (98-117 A.D.) *Rev.* **OPTIMO PRINCIPI.** Donor, Mr. William Taylor. 4103.21

Circular brass Money Changer's Weight, on *obv.* and *rev.* £3 12s. Donor, Mr. William Taylor. 4104.21

Abbey Jetton or Counter. Purchased. 4106.21

Trade Token of Humfrey Sarjent of Pleshey in Essex, 1659. Found at Pleshey. Donor, Miss Reeve. 4129.21

"Small Brass" coin, Constantinopolis. Struck at Tréves in 4th Century, A.D. Found at Halstead. Donor, Mr. R. V. Keymer. 4134.21

Five Trade Tokens—(1) Henry Thornback of Braintry, (2) John Finch in Halsted. (3) Paul Cannam in Colchester. (4) Colchester Bay Token, 1794. (5) Copper Token, "May Peace and Plenty accompany the Prince and Princess of Wales." Donor, Mr. R. V. Keymer. 4135-39.21

Copper Penny of Victoria, 1854. Donor, Mr. S. S. Wire. 4146.21

Two Halves and Four Quarters of Silver Pennies, representing Halfpennies and Farthings, respectively. Found at Dunwich. Donor, Mr. Edward T. Lingwood. 4147.21

These portions of coins were intentionally cut to supply the want of smaller values in the coinage of the time, about the 12th Century.

Silver Quinarius of Valentinian (354-375 A.D.) *Rev.* **RESTIVTOR REIP.** Found by donor in his garden at Tiptree. Donor, Mr. H. A. C. Tew. 4159.21

Sixpence of William III., 1834, and Threepenny-bit, ditto, 1837. Donor, Captain Gardner, R.A.C. 4171.21

Silver Denarius of Hadrian, (117-138 A.D.). *Rev.* **PMTRP**  
**COS FELIC AVG.** Purchased. 4178.22

Silver Denarius of Galba, (68-69 A.D.) *Rev.* Purchased.  
 4179.22

Jetton or Reckoning Counter. *Obv.*, Shield of three fleurs-de-lis. **AVE MARIA.** *Rev.*, a quartrefoil ornament. 14th Century. Donor, Mr. Baker. 4180.22

"Second Brass" coin of Faustina, wife of Antoninus Pius.  
*Rev.*, **PAX AVG.** (?) Donors, Messrs. H. Everett & Son.  
 4181.22

Trade Token of Nathaniel Strickson of Colchester, 1658.  
 Found at Wormingford. Donor, Mr. G. F. Clarke.  
 4189.22

"Third Brass" coin of Helena, wife of Constantius I. *Obv.*  
 Bust to *v.* **FL IVL HELENAE[AVG.]** *Rev.*, **PAX PV**  
**[BLICA].** *Exergue*, **TRS** (Cohen 4). Purchased.  
 4192.22

Silver Denarius of M. Antonius, *circ.* 32-31 B.C. *Obv.*, **ANT**  
**AVG** above galley, **IIIVIR PPC** below. *Rev.* **LEG**  
**XII.** Eagle between two standards. *cf.*, British Museum  
 Catalogue, II., p. 522. Purchased. 4196.22  
 Kindly identified by the Keeper of Coins, British Museum.

Jetton or Reckoning Counter, 14th Century. Purchased.  
 4197.22

## MANUSCRIPTS, PRINTS, MAPS, PHOTOGRAPHS, LANTERN SLIDES AND PRINTED MATTER.

Indenture of William Miller Parker of Axbridge in the  
 County of Somerset to James Barker of Colchester in  
 the County of Essex, Surgeon and Apothecary, 1st  
 December, 1803. Donor, Mr. H. Mothersole. 3977.20

Admission Ticket of "Mr. James Barker, Pupil, 1797" to  
 Hospital. Donor, Mr. H. Mothersole. 3977.20

Two Picture Postcards of Kastell Saalburg in Taunus,  
 Germany. Donor, Miss Harward. 3978.20



Fifteen unmounted Photographs of Mural paintings in Norfolk and Suffolk Churches. Donor, Mr. E. W. Tristram. 3985.20

Set of Ten Picture Postcards of Beeleigh Abbey. Purchased. 4016.20

Two Photographs of Langenhoe Church, 1912, and N. Porch of Runwell Church, 1911. Donor, Mr. George Biddell. 4017.20

Photograph of Roman Vase found near Faversham, Kent. Donor, Mr. W. Whiting. 4019.20

Photograph of Roman (or Late-Celtic Pot found at Grays, Essex, 1920. Donor, Revd. J. W. Hayes. 4020.20

Photograph of Roman (or Late-Celtic) Pot found at Grays, Essex. Donor, Mr. John W. Burrows, J.P. 4021.20

Eleven Picture Postcards of Medieval Antiquities of Peterborough. Donor, Mr. J. W. Bodger. 4022.20

Lantern Slide, capital of Pillar in Great Bromley Church. Donor, Mr. Harrington Lazell. 4040.21

Stamp Office Ticket for one horse for one day, 8th July, 1831. W. Hibbert, of Colchester, to Dedham. Donor, Mr. W. B. Plant. 4045.21

Photograph of Late-Celtic Bronze Mirror found at Birdlip, Gloucestershire. Donor, Mr. Upton. 4047.21

Six Lantern Slides of (1) Balcerne Gate. (2) Guard Chamber. (3) Plan of Excavations in Park. (4) Section of Hypocaust. (5) Map of Roman Wales. (6) Statue of Aurelius Bassus, Censitor of Camulodunum, in Vatican Museum. Donor, Dr. R. E. Mortimer Wheeler, M.C., F.S.A. 4070.21

Copy Book inscribed on cover, Thos. Sanford, Aug. 15th, 1794. Donor, Councillor Penry Rowland, M.D. 4076.21

Eight Photographs of Samplers, exhibited at the Arts Club,  
Soirée, 1920. Donor, Councillor Penry Rowland, M.D.  
4077.21

Picture Postcard of Hypocaust at Letocetum (Wall), owned  
and excavated by donor. Donor, Mr. J. R. K. Mott.  
4085.21

Photograph of fragment of Roman Vase of buff ware with  
Axe, Pincers, etc., in relief. Donor, Mr. E. P. B. Spain.  
4086.21

Compare Smith's Vase in Jarmin Collection.

Auction Admission Ticket for Sale at Wanstead House,  
Essex, of Furniture and Effects, by Mr. Robins of  
Warwick House, Regent Street [London]. Donor, Mr.  
H. W. Lewer, F.S.A. 4090.21

Photograph on Glass, in Passe Partout, of an Essex Man,  
name unknown. The photograph is backed by black  
velvet. Early 19th Century. Donor, Mr. W. Wire.  
4102.21

Playing Card Map of Essex. A 1750 reprint of the 1680  
issue which was "Sold by Robert Morden at the Atlas  
in Cornhill and Joseph Park, Stationer, at the Three  
Ink Bottles in Castle Alley under the west end of the  
Royal Exchange." The 1750 reprint was "Printed for  
H. Turpin, No. 104 St. John's Street, West Smithfield."  
Donor, Mr. R. P. L. Booker, F.S.A. 4148.21

Small Print from wood block of Chelmsford Institute,  
Chelmsford. Donor, Mr. S. S. Wire. 4152.21

Lithographic Print of Ruins of St. Botolph's Priory, by  
Deason, after a sketch by Mrs. J. Round. July, 1837.  
Donor, Mr. R. D. German. 4160.21

Lantern Slide of Iron Age Burial of Gaulish Chief in the  
Marne. Donor, Mr. G. Maynard, F.R.Ant.Inst.  
4170.21

Eight Lantern Slides of Abbey Gateway, Last Abbot riding  
to Execution, Trinity Church (3), St. Martin's Church,  
Plan of Colchester, and Capital in Great Bromley  
Church. Donor, Mr. Harrington Lazell. 4187, 4190.22



Eight Lantern Slides of Roman Wall, Bastions and Bal-  
kerne Gate. Purchased. 4188.22

Engraving of a Tessellated Pavement found in the garden  
of Mr. Jno. Barnard, Surgeon, at Colchester, 1763.  
Drawn by Dunthorne, Engraved by Larken, and given  
by Dr. Ducasel, F.R.S. & F.S.A., 1764. Donor, Miss  
Mills. 4191.22

Lantern Slide of Vault under Castle showing the niches at  
sides of walls. Purchased. 4193.22

Two Negatives of Vaults under Castle, specially taken to  
show niches in walls. Purchased. 4194.22

Photograph of Late-Celtic bronze Chape, in the National  
Museum of Wales, Cardiff, and two photographs of  
Bronze Sword, in London Museum, found at Waltham-  
stow. Donor, Mr. Parker Brewis, F.S.A. 4195-99.22

Photograph and Section Drawing of Late-Celtic Pedestalled  
Vase and Bowl, found at Abbots Langley, Herts., 1922.  
Donor, Mr. A. Whitford Anderson, A.R.I.B.A. 4198.22

Large Photograph ( $11\frac{1}{2} \times 9\frac{1}{2}$  ins.) of early Fireplace from  
Prittlewell, Essex, in the Victoria and Albert Museum,  
London. Donor, The Director and Secretary of the  
Museum. 4200.22

### DEPOSITED.

Ampulla, or Vase, of light grey ware with narrow neck and  
everted brim, slight offset and tooled groove on shoulder.  
Found at Fordham, 1920. Roman Period. 1st Century,  
A.D. Deposited by Mr. F. W. Beales. 4014.20

Chipped Pick of black flint, ochreously patinated. Found  
by depositor at Parson's Heath. Neolithic. Deposited  
by Mr. A. Auston. 4118.21

Belgic Vase of brownish-grey ware partly polished, with  
girth grooves and two zones of double meander pattern.  
Found at Barking, 1901. About 40-70 A.D. Deposited  
by Mr. Charles H. Butcher. 4169.21

A Collection of Local Stone Implements of the Palæolithic,  
Neolithic and Bronze Ages, formed by the late Hon.  
Curator, Alderman Henry Laver, F.S.A. Deposited by  
Mr. H. Edward Laver and Dr. Philip G. Laver, F.S.A.





**ADDITIONS TO MUSEUM LIBRARY,  
From 1st April, 1918, to 31st March, 1920.**

- Catalogue of Books in the Joint Library of the Societies  
for the Promotion of Hellenic and Roman Studies, 1914  
and appendices. Purchased. L.3
- Journal of Roman Studies. Vol. VIII., 1918, and Vol. IX.,  
1919. By Subscription. L.4, 18, 83, 112
- Worlebury, by Charles William Dymond and the Rev  
Henry George Tomkins. Purchased. L.7
- Horniman Museum Handbook. The Ascent of Man.  
Donor, the London County Council. L.8
- Victoria County History of Sussex, Part IV. Purchased.  
L.11
- Victoria County History of Hertford, Part V. Purchased.  
L.12
- Provinzial Museum in Bonn. Führer durch die antike  
abteilung, 1915. Donor, Dr. R. E. Mortimer Wheeler,  
M.C., M.A. L.13
- British Numismatical Journal. Second Series. Vol. IV.  
By Subscription. L.16
- Archæologia, Vol. LXVIX., 1917-18. Vol. LXX., 1918-20.  
Purchased. L.20, 106
- Proceedings, Society of Antiquaries of London. Second  
Series, Vol. XXXI., 1918-19. Vol. XXXII., 1919-20.  
Purchased. L.21, 103
- Four Reprints of Papers on (1) Jersey Megalithic Monument  
at Henley-on-Thames. (2) Circular Bronze Shields.  
(3) Implements of Copper and Bronze from Spain.  
(4) Flint Implements from \* \* \* Whipsnade,  
Beds. By Reginald A. Smith, Esq., F.S.A. Donor, the  
Author. L.23
- Specimens from the Layton Collection in Brentford Public  
Library. Described by Reginald A. Smith, Esq., F.S.A.  
(Reprint). Donor, the Author. L.24

- Roman Remains from Cardiff Racecourse. By John Ward, M.A., F.S.A. (Reprint). Donor, the Author. L.25
- Pins and Pincushions. By E. D. Longman and S. Loch, 1911. Purchased. L.26
- Handbook of the Bucks County Museum, Aylesbury. Donor, the Curator. L.28
- A Popular Handbook on the Nine Fortresses of the Saxon Shore. By Hugh Lanaway. Purchased. L.31
- Morant Club Report. The Balkerne Gate, Colchester. By R. E. M. Wheeler, M.C., M.A., Litt.D., 1920. (Reprint). Donor, the Author. L.32
- Roman Britain. By W. H. S. Jones, M.A. (Extract). Donor, Dr. F. A. Bruton. L.33
- Proceedings of the Prehistoric Society of East Anglia. Vol. III., parts 2 and 3. By Subscription. L.34, 118
- Classified List of Smithsonian Publications available for distribution. October, 1918. Donor, the Smithsonian Institution, U.S.A. L.37
- Report of Inaugural Meeting, Museums Committee of Local War Museums Association, 1918. Donor, the Museums Association. L.38
- Catalogue of British, Anglo-Saxon, Norman and English Coins, the property of the late Mr. W. Talbot Ready, for Sale by Messrs. Sotheby, Wilkinson & Hodge, 1920. Donor, Dr. Philip G. Laver, F.S.A. L.39
- Essex Naturalist, Vol. XIX., parts iii., iv., and Vol. XX., part i. Donors, Council of Essex Field Club. L.40, 68, 141
- An Introduction to the Study of Terra Sigillata. By Felix Oswald and T. Davies Pryce, 1920. Purchased. L.41
- British and Foreign Arms and Armour. By Charles Henry Ashdown. Purchased. L.42
- Collectanea Cantiana. By George Payne, F.L.S., F.S.A. Purchased. L.43

- Museums Journal, Vols. XIX., 1919-20, and XX., 1920-21.  
By Subscription. L.44, 127
- Miscellaneous Papers by Henry Laver, F.S.A., in one volume.  
L.45
- Report of Excavation on Traprain Law, 1919. By  
Alexander O. Curle, F.S.A., Scot., F.S.A. Donor, the  
Author. L.46
- Catalogue of Important Roman Military Antiquities, the  
property of Ernest John Seltman, Esq., for Sale by  
Sotheby, Wilkinson & Hodge, 1920. Purchased. L.47
- Hull Museum Publications, Nos. 122, 96, 123. Donor, Mr.  
Thomas Sheppard, M.Sc., F.G.S., etc. L.49, 109, 110
- Map of the Centuriation of Norfolk. By Montagu Sharpe,  
K.C., D.L. Donor, the Author. L.50
- Proceedings of Cotteswold Naturalists Field Club. Vol.  
XIX., part 2., Vol. XX., part 1. Donor, Mr. Edward  
C. Sewell. L.52, 53
- Middlesex in British, Roman and Saxon Times. By  
Montagu Sharpe, K.C., D.L. Donor, the Author. L.54
- Discovery in Greek Lands. By F. H. Marshall, M.A.  
Purchased. L.56
- How to Observe in Archæology. British Museum Publica-  
tion, 1920. Purchased. L.57
- Notes on the Pottery from a well on the site of "Cunetio"  
[Mildenhall] near Marlborough. By Mrs. M. E.  
Cunnington, Donor, the Author. L.58
- Rough Stone Monuments. By T. Eric Peet. Purchased.  
L.60
- The Museum. By Margaret Talbot Jackson. Purchased.  
L.63
- Les Fouilles du Mont Beuvray, 1897-1901. Par Joseph  
Déchelette, 1904. In Exchange. L.64
- Manuel D'Archéologie. Par Joseph Déchelette. Three  
Vols. Purchased. L.65



- Catalogue of Irish Gold Ornaments in the Collection of the Royal Irish Academy. By E. C. R. Armstrong, F.S.A., Dublin, 1920. Purchased. L.66
- The Recent Discovery of a Denehole at Grays. By Percy Thompson, F.C.S. (Reprint). Donor, the Author. L.69
- On (another) Annotated Copy of Warner's *Plantae Woodfordiensis*, 2 parts. By Percy Thompson, F.L.S. Donor, the Author. L.70
- Maps, How they are made, etc. By H. N. Dickson, M.A., D.Sc. Oxon. Purchased. L.71
- A descriptive account of Roman Pottery Sites at Sloden and \* \* \* Linwood, New Forest. By Heywood Sumner, F.S.A. Donor, the Author. L.72
- Six Reprints of Papers on (1) Anglo-Saxon Cemetery at Market Overton. (2) Late Anglo-Saxon Metal Work. (3) An Anglo-Saxon Cemetery at Wheatley. (4) Further Excavations in Round Barrows. (5) Two Bronze Age Hoards. (6) Two Matrices of Seals for recognizances under Statute Merchants of Colchester. By E. Thurlow Leeds, M.A., F.S.A. Donor, the Author. L.73-78
- Some lost Church Plate of the Colchester Archdeaconry. By Revd. W. J. Pressey, M.A. Donor, the Author. (Reprint). L.80
- Some Notes on the Elizabethan Communion Cups of Essex. By Revd. W. J. Pressey, M.A. Donor, the Author. (Reprint). L.81
- The M. H. de Young Memorial Museum, Golden Gate Park, San Francisco, California. Donor, the Museum Commission. L.87
- Man, January, 1919. (Illustrated Article on Bronze Age Urns, Essex). Purchased. L.90
- Map. Certuriation of Essex. By Montagu Sharpe, K.C., D.L. Donor, the Author. L.91
- The Roman Wall of Colchester. By Philip G. Laver, F.S.A. (Reprint). Donor, the Author. L.92

- Archæological Notes. (Reprint, Jnl. Brit. Arch. Assoc., Decr., 1920). Donor, Mr. Robert Bagster, F.S.A. L.94
- Some Problems of Prehistoric Chronology in Wales. By R. E. Mortimer Wheeler, M.C., M.A., D.Litt. Donor, the Author. L.97
- The Copper Token Coinage of Walthamstow. By Ambrose G. Barker. Donor, Mr. W. C. Wells. L.98
- The London Museum. Guide to the Prehistoric Section. Purchased. L.100
- British Museum Publication The Book of the Dead. Purchased. L.101
- British Museum Publication. The Babylonian Story of the Deluge and the Epic of Gilgamesh. Purchased. L.102
- Pevensey. Its Castle, Town and Antiquities. By the Revd. A. A. Evans. Donor, Mr. F. E. Wright. L.104
- The Connoisseur, October, 1921. January, 1922. Contain articles on the Colchester Sphinx and Shoebury Head. By F. Gordon Roe. Donor, the Author. L.105, 133
- The Antiquaries Journal, Vol. I., 1921. By Subscription. L.107
- The Public Utility of Museums. By The Rt.-Hon. The Lord Sudeley. (Reprint). Donor, the Author. L.111
- Court Rolls of the Borough of Colchester, Vol. I. (1310-1352). Translated by Isaac Herbert Jeayes, with Introduction, etc., by W. Gurney Benham, F.S.A., F.R. Hist. S. Donors, the Corporation of Colchester. L.113
- Roman Colchester. By R. E. Mortimer Wheeler and Philip G. Laver. (Reprint). Donor, Dr. Philip G. Laver, F.S.A. L.114
- Excavations at Segontium, 1920. By A. G. K. Hayter, F.S.A. (Reprint). Donor, the Author. L.116
- Account of the Excavations on Traprain Law, 1920. By Alexander O. Curle, F.S.A., Scot. and James E. Cree, F.S.A., Scot. (Reprint). L.117



- Nine Reprints of Papers on Dolmens, Tumuli, etc., of the Morbihan, France. By Le Rouzic, Marsille and Keller. Donor, Mr. H. E. Laver. L.119
- Les Monuments Megalithiques de Carnac et de Locmariaquer, par Z. le Rouzic. Donor, Mr. H. E. Laver. L.120
- Morant Club Report. An Inbula of Roman Colchester. By R. E. M. Wheeler, M.C., M.A., D.Litt. (Reprint). Donor, the Morant Club. L.121
- On a Monumental Brass newly discovered in Essex. By Miller Christy and W. W. Porteous. (Reprint). Donor, Mr. Miller Christy, F.L.S. L.122
- Bulletin of the Rhode Island School of Design (Providence, U.S.A.). Vols. I. to IX. and Vol. X., part 1. Donor, the Director and Editor, Mr. L. Earle Rowe. L.124
- Spinks' Numismatic Circular. Vols. XXVIII., 1920, and XXIX., 1921. By Subscription. L.125, 126
- Natural History. The Journal of the American Museum of Natural History, New York. Vols. XIX., 1919, and XX., 1920. Donors, the Trustees of the Museum. L.128, 129
- Das Gräberfeld von Hallstatt. By Dr. Moritz Hoernes, Leipzig, 1921. Donor, the Curator, Mr. A. G. Wright. L.130
- Die Prähistorischen Sammlungen des Museums zu Hallstatt. By Dr. Adolf Mahr, Leipzig, 1921. Donor, the Curator, Mr. A. G. Wright. L.131
- Report, Botanical Society and Exchange Club of the British Isles. Edited by G. C. Brown, (Colchester), 1920. (Contains references to Essex Flora). Donor, Mr. G. C. Brown. L.138
- Excavations at Segontium, 1920. (Reprint). Donor, Dr. R. E. Mortimer Wheeler, M.C., F.S.A. L.139
- Segontium Excavations, 1921. (Reprint). By R. E. Mortimer Wheeler, M.C., D.Litt., F.S.A. Donor, the Author. L.140



- Man and his Past. By O. G. S. Crawford. Purchased.  
L.142
- A Guide to the Castle of Newcastle-on-Tyne. Parts I. and  
II. By Parker Brewis, F.S.A. Donor, the Author.  
L.144
- A Hoard of Bronze discovered at Grays Thurrock. By  
Charles H. Butcher. (Reprint). Donor, the Author.  
L.145

### Albert Museum and Art Gallery.

Several gifts for the Albert Museum and Art Gallery are here briefly referred to; they will be more fully described in due course. They include:—

- Blanket of Colchester Bays and Bay Maker's Comb, Miss Woodroffe.
- Framed copy of Chelmsford Chronicle, 1790. Mrs. Wren.
- Stone Clock Face, 16th Century. Dr. Philip G. Laver, F.S.A.
- Water Colour Drawing of Colchester Castle, 1830. Mr. E. G. Williams.
- Silk Programme of Entertainment at Earls Colne, 1806. Mrs. Mason.
- A.B.C. Guide to Colchester Municipal Elections, 1890. Mr. Councillor A. G. Aldridge, O.B.E.
- Antique Tortoiseshell Combs. Mrs. Chubb.
- White-Fronted Goose set up in Case. Major W. F. Dick.
- Four Carved Marble Tazzas on pedestals and three Exhibition Cases. Mrs. Schofield.

## Reports

RECEIVED FROM APRIL 1ST, 1920, TO MARCH 31ST, 1922

Ancient Earthworks, Committee of  
 Belfast, Public Art Gallery and Museum  
 Bristol, Museum and Art Gallery  
 Cambridge, Fitzwilliam Museum  
 Cambridge, Friends of the Fitzwilliam Museum  
 Cardiff, The National Museum of Wales  
 Chester, Society of Natural Science, etc.  
 Colchester, Public Library  
 Dublin, University College Museum  
 Edinburgh, Royal Scottish Museum  
 Gloucester, Public Museum  
 Ipswich, Borough Museums and Art Gallery  
 Liverpool, University Institute of Archæology  
 New York, American Museum of Natural History  
 Norwich, Castle Museum  
 Nottingham, Art Museum  
 Oxford, Ashmolean Museum  
 Peterborough, Natural History, Scientific and Archæological  
     Society  
 Saffron Walden, Literary Institution  
 Salisbury, South Wilts and Blackmore Museums  
 Southend, Public Library and Museum  
 Spalding, Gentlemen's Society  
 Sydney, N.S.W. Technological Museum  
 Taunton, Castle Museum  
 Washington, U.S.A., National Museum  
 Wisbech, Museum  
 Warrington, Municipal Museum  
 Yorkshire Philosophical Society

*N.B.—Curators of Museums will much oblige by forwarding  
 their reports in exchange as issued,*

## List of Donors.

American Museum of Natural History, Trustees of (New York)  
 Anderson, A. W. (Watford)  
 Askew, E. A.  
 Auston, A. (Parsons Heath), Depositor  
 Bagley, F. (Brightlingsea)  
 Bagster, R. (London)  
 Baker,  
 Beales, F. W. (Fordham), Depositor  
 Biddell, George (Teddington)  
 Bodger, J. W. (Peterborough)  
 Booker, R. P. L. (Droitwich)  
 Brewis, Parker (Newcastle-on-Tyne)  
 Brown, C.  
 Brown, G. C.  
 Bruton, Dr. F. A. (Manchester)  
 Bugg, Mrs.  
 Bull, S. (Nayland)  
 Burrows, J. W. (Southend)  
 Burton, Son & Sanders, Ltd.  
 Butcher, C. H. (Ilford) and Depositor  
 Cater, Mrs. Adelaide  
 Chalmers, A. (Tendring)  
 Christy, Miller (London)  
 Chubb, Mrs.  
 Clapham, A. W. (Sutton)  
 Clark, Mrs. Ellen  
 Clarke, G. F. (Wormingford)  
 Colchester, Corporation of  
 Cooper, Miss (Great Bentley)  
 Cunnington, Mrs. M. E. (Devizes)  
 Curle, A. O. (Edinburgh)  
 Daniell, T. B. (West Bergholt)  
 Ellis, H. E.  
 Essex Field Club, Council of  
 Everett & Son, H.  
 Frost, A. W.



**Gardner, Captain**

German, R. D. ( )

Girling, J. R. (Bentley)

Gurney, F. J. (Ridgewell Hill)

Harward, Miss (West Mersea)

Heybridge Parish Council, The

Hayes, Rev. J. W. (West Thurrock)

Hayter, A. G. K. (London)

Hearsum, R. C.

Jarmin, Councillor A. M.

Keymer, R. V. (Braintree)

Lankesheer, F.

Laver, H. E. and Depositor

Laver, Philip G. and Depositor

Lewer, H. W. (Loughton)

Layard, Miss N. F. (Kelvedon)

Lazell, H.

Lingwood, E. T. (Westleton)

London County Council, Clerk of

Leeds, E. T. (Oxford)

Marlar, J. F.

Marshall, V. E.

Marriage, Alderman W. (Alresford)

Maynard, Guy (Ipswich)

M. H. de Young Museum Commission (San Francisco)

Mills, Miss (Brighton)

Morant Club, Hon. Secretaries of

Moseley, G. B. C. (Hampton Wick)

Mothersole, H. (Chelmsford)

Mott, R. J. K. (Taunton)

Mottram, Miss M. (Mere)

Museums Association, The

Nichols, W. B. (Bradfield)

North, Lt.-Col. O. H. (Camer)

Parker, Major J. O.

Parker, Mrs. J. O.

Parmenter, Rev. H. P. (Otten Belchamp)

Pettitt, Norman (Stanway)

Plant, W. B.

Pressey, W. J. (Margaretting)

Rashbrook, G. M.  
 Reeve, Mrs. (Pleshey)  
 Rigg, W. L.  
 Robinson, T. W.  
 Roe, F. G. (London)  
 Rowe, L. Earle (Providence, U.S.A.)  
 Rowland, Councillor Penry  
 Sewell, E. C. (Cirencester)  
 Sharpe, M. (Brentwood)  
 Sheppard, T. (Hull)  
 Shippey, A. T.  
 Smith, R. A. (British Museum)  
 Spain, E. P. B. (Newcastle-on-Tyne)  
 Stevenson, W. (Halstead)  
 Sudeley, Rt. Hon. Lord (London)  
 Sumner, H. (South Gorley)  
 Taylor, W.  
 Tedder, W. (Manewdon)  
 Tew, H. A. C. (Tiptree)  
 Theobald, Major A. C. L.  
 Thompson, P. (Loughton)  
 Tristram, E. W. ( )  
 Turner, Ashton (West Mersea)  
 Turner, Mrs. (Earls Colne)  
 Upton, C., (Gloucester)  
 Victoria and Albert Museum, Director and Secretary of  
 (London)  
 Ward, John (Cardiff)  
 Wells, W. C. (Sudbury Mx.)  
 Wheeler, Dr. R. E. M. (Cardiff)  
 Whiting, W. (Faversham)  
 Wilton, E. J.  
 Wire, S. S.  
 Wire, W. (Woodford Green)  
 Wright, A. G. (Curator)  
 Wright, F. E. (Redhill)

*Donors to Albert Museum and Art Gallery see under heading.*

## FORMS OF BEQUEST.

I bequeath out of such part of my personal Estate as may by Law be bequeathed for such purposes, to the Mayor, Aldermen and Burgesses of the Borough of Colchester, the sum of

free from Legacy duty, for the Benefit of the Corporation Museum of Antiquities, to be expended in such a way as they may deem expedient; and I direct that the receipt of the Treasurer for the time being of the said Borough shall be an effectual discharge for the same Legacy.

---

I bequeath\*

\*ANTIQUITIES

OR OTHER

OBJECTS to the Mayor, Aldermen and Burgesses of the Borough of Colchester (Free from Legacy Duty, which duty I direct shall be paid out of my pure personality), for the benefit of the Corporation Museum of Antiquities, either for Exhibition, or for such other purposes as they may deem expedient: and I further direct that the Receipt of the Town Clerk for the time being of the said Borough shall be an effectual discharge for the same Legacy.







(REVERSE OF BOROUGH SEAL, 15TH CENTURY.)

The Colchester Museum of Local  
Antiquities.

The seal of the University of Cambridge is a circular emblem. It features a central figure, likely a saint or scholar, seated and holding a large cross. The figure is flanked by two kneeling figures, possibly angels or saints, each holding a shield. The background is filled with architectural details, including towers and arches. The entire scene is enclosed within a circular border containing Latin text: "SIGILLUM UNIVERSITATIS COLLEGIJE PETRI ET MARIE APOSTOLORUM PRINCIPALIS" (Seal of the University of the College of St. Peter and St. Mary, one of the principal colleges of the University).

# REPORT

**For the Year ended 31st March, 1925.**

**Price Sixpence.**



Borough of



Colchester.

---

THE  
Corporation Museum  
OF  
LOCAL ANTIQUITIES

(FOUNDED 1846).

REPORT

OF THE  
Museum and Muniment Committee

For the Year ended 31st March, 1923.

—  
**PRICE—SIXPENCE.**  
—

COLCHESTER :  
BENHAM AND COMPANY, LIMITED.

1923.



# Committee and Officers.

---

## COMMITTEE, 1922-23.

Alderman W. G. BENHAM, F.S.A., F.R.Hist.S., J.P., *Chairman.*

Councillor A. M. JARMIN, F.R.Hist.S., J.P., *Deputy-Chairman.*

THE WORSHIPFUL THE MAYOR  
(Councillor P. A. SANDERS, O.B.E., J.P.).

Alderman WILSON MARRIAGE, J.P., C.C.

„ W. COATS HUTTON, J.P.

Councillor J. T. BAILEY, J.P.

„ P. W. ROWLAND, M.D.

*The following Members represent the  
Essex Archæological Society:—*

Mr. PHILIP G. LAVER, F.S.A.

Mr. DUNCAN W. CLARK, A.R.I.B.A.

Mr. HARRINGTON LAZELL.

## CURATOR:

ARTHUR G WRIGHT.

## ASSISTANTS:

W. F. BELL.

B. J. SIMPSON.

## The Corporation Museum.

---

*To the Mayor and Council of the Borough of Colchester.*

GENTLEMEN,

We beg to submit our Report on the Corporation Museum for the year ended 31st March, 1923.

The total number of visitors to the Museum during the year was 42,860, a substantial and gratifying increase upon the numbers for the two previous years.

A list of over ninety donors testifies to a growing appreciation of the Museum, and many of the gifts are of great interest and value.

Amongst the most important, and perhaps the rarest, is the Wooden Idol of the Viking period, found during excavations in Dagenham marshes, presented by Mr. W. J. Grant, of Romford.

Other valuable gifts include the fine piece of Roman Mosaic Pavement found and presented by Mr. A. W. Frost ; the collection of early Palæolithic flint implements, Roman and later antiquities, given by the Rev. E. C. Smith, B.D., of Chadwell St. Mary ; the fine example of a sixteenth century Costril or Pilgrim's Bottle, found in Colchester some 50 years back, specially acquired and presented to the Museum by Mrs. Herring ; and the large series of worked and unworked Marbles of the Roman period, found in Culver Street, given by Mr. Philip Laver, F.S.A.

Two new "Island Cases" have been placed in the Romano-British Room, and a new wall case on one of the piers in the corridor.

In the latter has been arranged the fine series of Bronze Age Hoards, while in the wall case at end of the Gallery, which has been re-coloured and refitted, the instructive collection of Bronze Age Pottery, ranging from about 2000 to 400 B.C., has been re-arranged.

The collection of Medieval and later pottery is being removed from the Crypt to the Upper Room, in order that a more coherent chronological arrangement of the Late-Celtic and Romano-British antiquities may be carried out.

The collection of Romano-British Pottery is now being catalogued by Mr. Thomas May, M.A., F.S.A., in collaboration with your Curator.

W. GURNEY BENHAM, *Chairman.*

ARTHUR G. WRIGHT, *Curator.*



## Visitors to the Museum.

			1922-23.	
			Days open.	Attendance.
April	...	...	24	3864
May	...	...	27	3150
June	...	...	26	4114
July	...	...	26	4510
August	...	...	27	9177
September...	...	...	26	5904
October	...	...	26	2699
November...	...	...	26	1424
December	...	...	25	2007
January	...	...	27	2316
February	...	...	24	1532
March	...	...	26	2163
<i>Total</i> ...			<u>310</u>	<u>42860</u>

## BANK HOLIDAY ATTENDANCES.

Easter Monday, 17th April, 1922	...	769
Whit Monday, 5th June, 1922	...	454
August Monday, 7th August, 1922	...	401
26th December, 1922	...	232

The total number of Visitors for the year ending March 31st, 1903, was 20,887;

1904, was 27,039; 1905, was 28,408; 1906, was 29,588; 1907, was 31,078  
 1908, was 30,875; 1909, was 29,842; 1910, was 34,453; 1911, was 29,423  
 1912, was 27,298; 1913, was 32,149; 1914, was 29,564; 1915, was 49,689  
 1916, was 44,810; 1917, was 46,437; 1918, was 47,610; 1919, was 51,496  
 1920, was 46,144; 1921, was 39,639; 1922, was 37,947;

## The Colchester Museum

IS OPEN DAILY FROM

1st April to 30th September—10 a.m. till 5 p.m.

1st October to 31st March—10 a.m. till 4 p.m.

AND CLOSED ON

Sundays, Good Friday, and Christmas Day, and such other days as the Committee may order.

ADMISSION FREE.

---

It is urgently requested that any discovery of Archaeological interest in the neighbourhood may be brought to the notice of either the Chairman or the Curator as early as possible.

The Curator will be pleased to give any information in his power and may be seen daily, Museum engagements permitting.

---

Postcards of many of the most important antiquities and a new series showing the Castle from various points of view, may be obtained in the Museum at One Penny each.

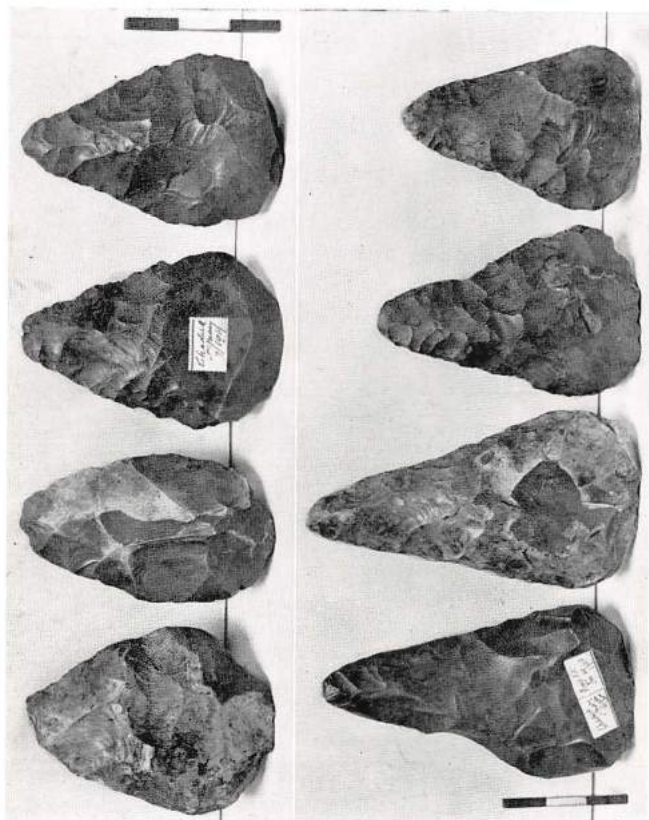
---

Curator

...

ARTHUR G. WRIGHT.

PLATE II.



*Photo by the Curator.*

See page 7, No. 4248.22



# List of Additions to the Museum

BY GIFT AND PURCHASE,

*From 1st April, 1922, to 31st March, 1923.*

All the objects were found in Colchester unless otherwise stated.

## STONE AND BRONZE AGES.

Polished Axe of grey flint,  $7\frac{3}{8}$  ins. in length. Found near Brentwood about 50 years back. Late Neolithic or Early Bronze Age. Purchased. 4214.22

Five worked Flints, found by donor on Wolves Farm, Tendring. Probably Neolithic. Donor, Mr. Adam Chalmers. 4226.22

Seventy-six Flint Implements of Chelles and St. Acheul types, from the River Drift Gravels of Chadwell St. Mary. Palæolithic. Donor, the Rev. E. C. Smith, B.D. (*Plate II.*). 4248.22

Many of the Implements are very fine examples, beautifully patinated, and very slightly rolled.

Perforated Whetstone, found at East Tilbury. Probably Bronze Age. Donor, Rev. E. C. Smith, B.D. 4271.22

Flint Flake, ochreously patinated, Moustier type. Found by donor in pit at Chadwell St. Mary. Dr. Philip Laver, F.S.A. 4280.22

Large Stone Rubber; Flint pebble Rubber; Leaf-shaped Arrow-head of flint; two Cores and eight Flakes of flint and eight Net Sinkers made from pebbles with natural holes. Found by donor at Walton-on-the-Naze. Donor, the Curator, Mr. A. G. Wright. 4303.22

Flint Core or Cone and large Flint Flake from Langham. Donor, the Curator, Mr. A. G. Wright. 4304.22

Three Implements of grey and black Flint, Scraper; two Flakes and five Net Sinkers found by donor at Clacton-on-Sea. Donor, the Curator, Mr. A. G. Wright.

4305.22

Bronze Spear-head,  $5\frac{1}{2}$  ins. in length, Bronze Age, Italy. Donor, Sir Thomas Barrett-Lennard, Baronet.

4319.22

This Spear-head which resembles some British examples and had been preserved at Belhus, Sir Thomas Barrett-Lennard's seat in Essex, for some years, without a history, was submitted to Mr. Reginald A. Smith, F.S.A., of the British Museum, who remarks "the pointed oval section of the socket and the patina point conclusively to its Italian origin." Sir Thomas himself suggested it might have been brought from Italy by his grandfather, who was a great collector.

Flint Scraper and Flint Borer or Graver, found by donor on Wolves Farm, Tendring. Donor, Mr. Adam Chalmers.

4325-26.22

Portion of base of a large vessel of coarse gritted ware, found at Braintree. Late Bronze Age? Donor, Mr. F. J. Weaver, F.R.Hist.S.

4373.23

Vertebra of Mammoth (*Elephas Primigenius*) dredged up off Clacton. Donor, Mr. B. J. V. Bilney.

4407.23

### EARLY IRON AGE (LATE-CELTIC).

Large annular Bead or Hair Ring, of dark blue glass, with inlaid white meander. Diameter  $1\frac{2}{16}$  ins., opening  $\frac{9}{16}$  ins. Found on the Shore at Mersea Island. Late-Celtic. Donor, Master Hugh Rowland.

4243.22

Similar smaller beads are to be seen in the Joslin and Jarmin collections. See also, Curle, *A Roman Frontier Post*, plate xci., figs. 17 and 18, and Déchelette, *Manuel D'Archéologie*, Vol. II. part iii, page 1315.

Eight fragments of various vessels with sharply incised decoration of chevrons, etc., one with small bosses resembling rivet heads. Found at East Tilbury. Early Iron Age. Donor, Revd. E. C. Smith, B.D. (*Plate III.*)

4260-67.22

Similar decoration is found on fragments from Mont Beuvray, illustrated by Déchelette, *Manuel D'Archéologie*. Vol. II., part 3, page 1485.

PLATE III.

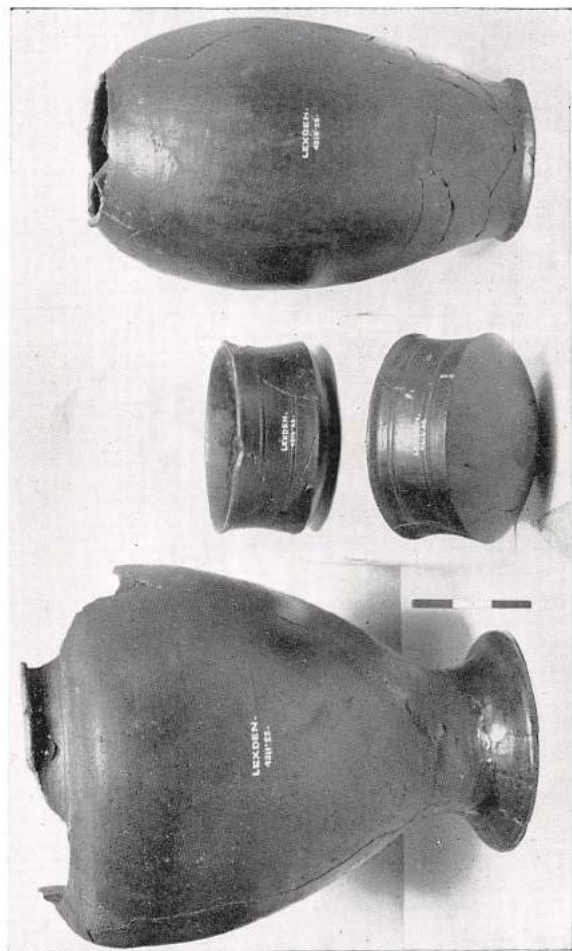


*Photo by the Curator.*

See page 8, No. 4260-67.22.



PLATE IV.



*Photo by the Curator.*

See page 9, Nos. 4310-13.22.

Tall Jar or Beaker of brown ware with dark polished exterior, sunk beaded base, rim wanting. Present height, 13 ins. Found in donor's garden, St. Clare Road, Lexden, 1922. Early 1st Century, A.D. Donor, Mr. John Harper, B.A. 4310.22  
(Plate IV.).

A similar pot is figured by Bushe-Fox, *Excavations at Hengistbury Head*, p. 47. pl. xxiv. 45.

Pedestalled Vase of brown ware, with dark polished exterior, upright everted rim, narrow cordon round pedestal, base slightly dished. Imperfect and partly restored. Height,  $12\frac{3}{4}$  ins. Found near above. Early 1st Century, A.D. Donor, Dr. Philip Laver, F.S.A. 4311.22  
(Plate IV.).

Two small Bowls of brown ware with dark polished exterior, slightly concave sides, with tooled girth grooves, convex bases with concave hollow in centre. Height,  $2\frac{7}{8}$  ins. Found near above. Early 1st Century, A.D. Donor, Dr. Philip Laver, F.S.A. (Plate IV.). 4312-13.22

Similar bowls have been found at Welwyn, Kelvedon and Shoebury. See *Archæologia*, Vol. lxiii.

Remains of a Flagon of buff ware with three-ribbed handle, cylindrical neck and plain moulded rim, beaded and slightly hollow base. Found with Pedestalled Vase, No. 4311.22. Early 1st Century, A.D. Donor, Dr. Philip Laver, F.S.A. 4314.22

This flagon is similar to Loeschcke's type 45, Haltern and Ritterling's type 50 B, Hofheim, which are dated.

Remains of a bronze Pail or Tankard, found with pedestalled vase and flagon and contained burnt human bones. Donor, Dr. Philip Laver, F.S.A. 4315.22

Lower half of Pot of brown ware with cordon round bulge. Found in donor's garden, in St. Clare Road, Lexden. Early 1st Century, A.D. Donor, Mr. Vernon E. Marshall. 4336.22

Large Bowl of brown ware with polished exterior, below the bead rim are two wide, shallow cordons, the upper ornamented with tooled lattice pattern; the base slightly sunk and beaded is covered with fine concentric circles across which is a broadly tooled cross. Partly restored. It contained burnt human bones. Found in garden in St. Clare Road, Lexden. Early 1st Century, A.D. Donor, Dr. Philip Laver, F.S.A. 4409.23

Remains of large lid of above of hard brown ware burnt red in places with small concave handle, similar to those on the lids of the cordoned bowls from Colchester, Lexden and Braintree in the Museum. Donor, Dr. Philip Laver, F.S.A. 4410.23

Pot of coarse brown ware with bead rim and shoulder scored with fine horizontal grooves. Found in an ancient ditch at Braintree. About 40 to 50 A.D. Donor, Mr. F. A. Hunnable. 4420.23

*See Antiquaries Journal, Vol. III., p. 148.*

A number of fragments of Early Vases, including Belgic platters, found in ancient ditch at Braintree, 1922. Donor, Mr. F. A. Hunnable. 4421.23

Cinerary Urn, containing burnt bones, of coarse grey ware with upright everted rim and tooled groove round bulge. Large wide-mouthed Pot of dark grey ware with brown exterior, recurved rim with square edge lip and narrow counter-sunk cordon, slightly beaded and concave base on which is roughly scratched a +. Found near ancient ditch, Braintree, 1922-3. About 20 to 50 A.D. Donor, Mr. Councillor G. Hunnable. 4422-23.23

Fragments of small carinated beaker and other wares, found with above. Donor, Mr. Councillor G. Hunnable. 4424.23

Base of a Pot of thick grey ware found in a small pit near the ancient ditch, Braintree. Donor, Mr. Councillor Grant. 4425.23



Small Pot of coarse brown ware with oblong beaded lip, roughly tooled grooves round bulge and spiral on base, and Small Pot of greyish brown ware, recurved neck with square-edged lip and three tooled grooves on neck. Found in donor's garden, Lexden Road. About 50 A.D. Donor, Mr. Alderman W. Coats Hutton, J.P.  
4426-27.23

# ROMANO-BRITISH PERIOD.

Fragment of "Samian" Bowl (Form 37) with panel decoration. Found during excavations in Maldon Road, 1922. Purchased, 4201A.22

Circular enamelled Fibula of white bronze, with projections at intervals; the pin short and hinged. 1st Century A.D. Donor, Dr. Philip Laver, F.S.A.  
4206.22

Similar brooches have been found at Camelon, Newstead, Wroxeter and Wilderspool. See *Proc. Soc. Antiquaries of Scotland*. Vol. xxxv., p. 405, plate A. 2., Curle, *Newstead Report*, p. 331. pl. lxxxix, 20., Bushe Fox, *Wroxeter Report*, pp. 26 and 28, fig 10.9, and May, *Wilderspool Report*, 1905. The Wroxeter fibula was found with two coins of Vespasian.

Large Cinerary Urn of thin tile-red ware, with recurved roll rim and row of notches above shoulder, and Bowl of dark grey ware, with black exterior and flattened projecting rim. Found with Urn in donor's garden. Donor, Mrs. O. J. Ellison.  
4209-10.22

These vessels with some of "Samian" found with them evidently formed part of a Burial Group.

Small Olla of coarse grey ware with undercut bead rim and tooled line beneath; and small Saucer of hard grey ware with reddish-brown exterior, flat everted sides with chamfered base. Found together in garden of R.A. Barracks, some years ago. Donors, The Officers of the R.A. Mess, Colchester.  
4220-21.22

Remains of a Platter of fine grey ware with curved sides and hollow base with flat foot-ring; maker's stamp within double concentric ring. Belgic ware, between 50-100 A.D. Donor, Dr. Philip Laver, F.S.A.  
4222.22

This platter appears to be a copy of Ritterling's, type 99 B. (Hofheim) the sides sloping out more and driving the foot-ring up into the base so as to be quite useless.

Base fragment of Glass Bottle with moulded concentric circles. Found in donors' brick yard, 1922. 1st Century, A.D. Donors, Messrs. H. Everett and Son.

4223.22

Circular Lamp of buff ware with light slip coated exterior, handle wanting; the lamp has no nozzle only a circular opening for wick. 3rd or 4th Century, A.D. Donor, Mr. Fred Godfrey.

4227.22

Handle of Early Amphora; base fragment of "Samian" platter; base of small Olla; rim fragment of black ware Cooking Pot. 1st Century A.D. Donor, Mr. W. E. Durrant.

4242.22

Bead of semi-opaque pearl coloured glass. Purchased.

4244.22

Large Cooking Pot of reddish brown ware with everted rim and tooled trellis pattern on matt zone on sides. The pot has been used for burial purposes and contains burnt human bones. Early 2nd Century, A.D. Donor, Dr. Philip Laver, F.S.A.

4247.22

A Collection of Pottery and other antiquities of the Roman period formed by the donor. Found at Chadwell St. Mary and other localities. Donor, the Rev. E. C. Smith, B.D.

4249-74.22

Spherical Vase, or Bottle with short recurved neck and moulded rim, ornamented with polished, matt, and rouletted bands. Late 1st Century A.D.

4249.22

A similar Bottle with shallow matt band below neck on which is a tooled meander pattern, girth grooves round body. Found with above. Late 1st Century A.D.

4250.22

Beaker of dark grey ware with polished olive-brown exterior, ornamented with incised chevrons between two cordons and a broad rouletted band.

4251.22

Bulbous Beaker with conical beaded neck with slight offset at base, ornamented round bulge with two rouletted and one grooved band.

4252.22

PLATE V.

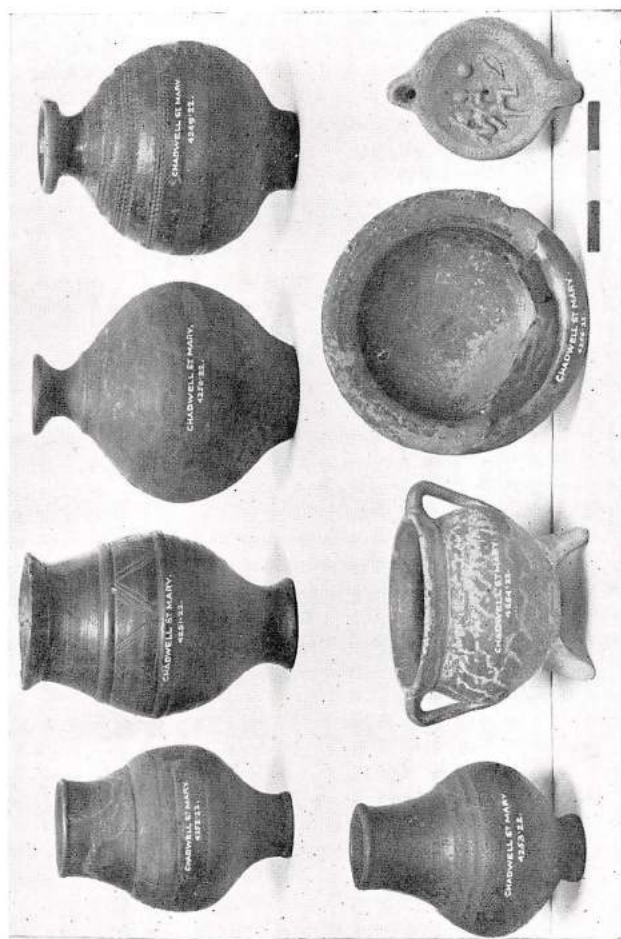


Photo by the Curator.

See pages 12 and 13, Nos. 4249-74.22.



A similar Beaker of tile-red ware with slight offset at base of neck, ornamented with two rouletted bands; the body appears to have been coated with a black glaze.

4253.22

Small two-handled Pot on three short legs, of hard light buff paste with darker slip coating which shows traces of raised irregular lines resembling "rustic ware." Legs restored.

4254.22

Compare Three-legged bowl without handles. Ritterling, *Hofheim*, plate xxxv, fig. 90. Bushe-Fox, *Wroxeter Report*, No. 2. fig. 18, no. 55, and one with single handle, Behn, *Römische Keramik*, pl. x., no. 249.

Lamp of light red ware, originally covered with a darker slip, with lug-shaped handle and small nozzle; the disc is ornamented with an impressed *ovolo* border, within which in relief is the figure of a naked warrior with staff, or club, in right hand and a small circular object in left; a bow (?) is slung across his back, and in the field is another bow-shaped object and circular disc. Apparently a local copy of a 1st Century type of lamp.

4255.22

Shallow Cup of "Samian" Ware (Form 35), without ivy leaf decoration; slightly restored.

4256.22

The above are shown on Plate V.

Forty-nine Potter's Stamps on bases of "Samian" Vessels. (Forms 18, 24, 27, 29, 31 and 33).

4257.22

Nineteen fragments of decorated "Samian" Bowls. (Forms 29 and 37).

4258.22

Horizontal loop Handle of tile-red micaceous ware.

4259.22

All the above were found at Chadwell St. Mary.

One amber coloured Spherical Glass Bead, two faceted dark blue ditto, and one bright blue opaque ditto. Found at West Thurrock.

4269.22

Eight fragments of Bronze Mounts from a wooden casket, found in Sandy Lane, Chadwell St. Mary, 1908.

4272.22

Small pointed Whetstone; sundry iron objects, awl, bolt with loop, pieces of wire and twelve iron nails. Found at Tilbury and Chadwell St. Mary. Date uncertain. 4270-73-74.22

---

Portion of thick Tile with mortar adhering, from excavation in Castle quadrangle during Spring of 1922. 4290.22

Burial Group consisting of a spherical Flask, or Vase, of grey ware, with short curved neck, rim wanting, beaded base. Wide mouthed Bowl of grey ware with everted curved rim. Small Beaker of thin grey Belgic ware of "poppy head" type ornamented with raised pellets. Found near Mucking Church in 1886. About 2nd Century A.D. Donor, the Rev. C. R. Nelson Burrows. (*Plate VI.*). 4292-94.22

Several fragments of Roman Wares picked up by the donor on the site of Othona, Bradwell St. Mary, 1922. Donor, Miss M. V. Taylor. 4299.22

Large bronze Needle flattened at head, eye wanting, present length  $5\frac{1}{2}$  ins. Bronze Stud with flat circular head also imperfect. Found on site of new Bowling Green in Castle Park, 1922. Purchased. 4309.22

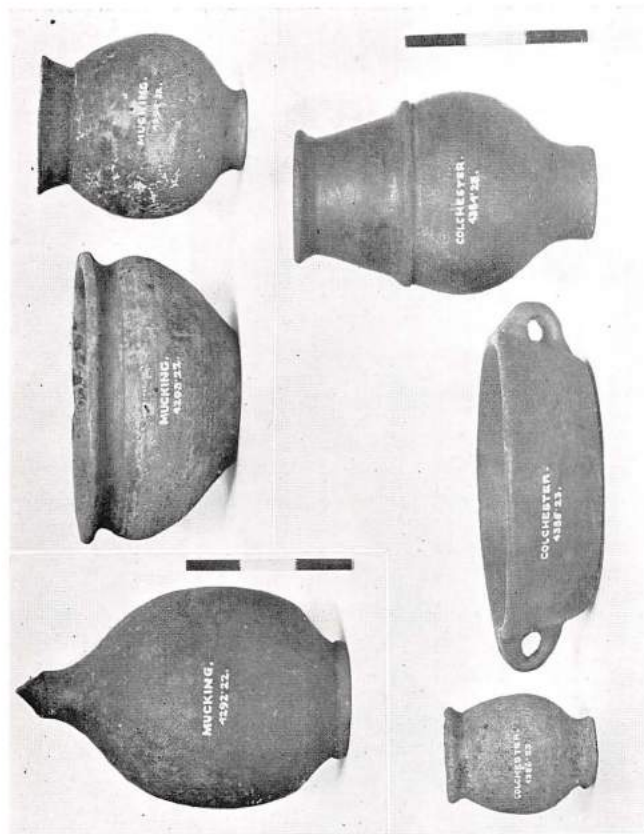
Fragments of Pottery and Bones found by donor on an exposed living site under the line of the demolished sea wall at Clacton-on-Sea, October, 1922. Donor, Mr. John French. 4334.22

Shells, Bones and Potsherds found by donor on same site as above. Donor, Captain H. E. Laver. 4335.22

The following have been purchased and added to the Jarmin Collection. 4337, 4352-55.22. 4381-83.23. 4411-12.23

Small Flagon of buff ware, on the front of the mouth is modelled a female head, on the back a flat three-ribbed handle, all decorated with brown paint and seven bands of brown paint encircle the body. 3rd to 4th Century, A.D. (*Plate, VII.*). 4337.22

PLATE VI.



*Photo by the Curator.*

See pages 14 and 16, Nos. 4292-422 and 4384-6 23.



Small Urn, of grey ware with everted beaded rim, containing cremated bones and two iron shoe nails. Late 1st Century, A.D. (*Plate, VII.*). 4352.22

Beaker of pale buff ware with brown-black colour coating ornamented round bulge with scrolls and leaves *en barbotine* between two rouletted bands, bung shaped foot. The scrolls now showing white were originally the same colour as rest of beaker. Two  $\times \times$ , owner's mark, scratched on side of neck. 3rd to 4th Century. (*Plate, VII.*). 4353.22

Fragment of "Samian" Bowl (Form 37). Metope style of decoration; lower portion of seated figure holding in left hand a shield; beneath, two roundels, portion of small figure and a caryatid, panels divided by zig-zag lines. Probably Lezoux ware, Antonine period. 4354.22

Four Lamps of pale buff ware, with traces of red colour coating, coarsely made, the bodies hood-shaped with *peltæ* form nozzles; the central design in each, a circular *cista* with writing materials.  $3\frac{1}{4} \times 2$  ins. All four were found together in Priory Street. (*Plate, VIII.*). 4355.22

Mr. Reginald A. Smith, F.S.A., of the British Museum, informs me that this type has not occurred before in Britain and was probably derived from Syria or Palestine.

Olla, or Pot, of pale red ware, with flat everted rim, under which is a shallow cordon. 4381.23

Mortar of pale red ware with buff slip coating. First Century, A.D. 4382.23

Unguent Pot of light buff ware with spirally grooved body and small base; mouth wanting. About 80-120 A.D. 4383.23

Flagon of pale buff ware with saucer-shaped mouth and moulded base; and small pear-shaped Lamp of red ware with mica coating. 2nd Century, A.D. 4411-12.23

Half of a large Roman Brick, or Tile, the original size of which was probably  $23\frac{1}{4}'' \times 23\frac{1}{4}'' \times 2''$ ; marked on one side at one end with a segment of a double grooved circle. The corner of another, with segment of double circle at one corner and three parallel wavy grooves running across length. Both found at West Mersea. Donor, Mr. Ashton Turner. 4341-42.22

Wide mouthed Bowl of black ware with carinated shoulder, recurved rim and tooled base, partly polished. Late 1st Century, A.D. Purchased. (*Plate, VII.*). 4350.22

Four beads, Melon-shaped of vitreous paste, Annular of blueglass with white meander. Spherical of white translucent glass and blue opaque glass. Roman period. Purchased. 4370.23

Small terra-cotta Statuette said to have been found in Colchester some years back. From the Page Collection. Donor, the Rev. Canon F. W. Galpin, M.A., F.L.S. 4375.23

Mr. H. B. Walters, O.B.E., M.A., F.S.A., Deputy Keeper of Greek and Roman Antiquities, British Museum, identifies this as an archaic Greek statuette of Seilenos; the type well-known in Greece and Asia Minor, about 500 B.C.

Portions of the rim and handle of a large green Glass Bottle. The handle is broad and divided into three bold ribs; a very unusual type. Portion of an Amphora. Found at Stanford-le-Hope, some years ago. Late 1st Century, A.D. Donor, Mr. G. F. Windle. 4380.23

When found both were perfect, the bottle being placed inside the amphora.

Burial Group, consisting of a Beaker of light grey ware, darker polished exterior, everted rim and slight offset on shoulder with rouletted zone on bulge, Saucer of light grey ware with dark polished exterior and two grooved loop handles on side, one restored. Small unguent Pot of buff ware with everted rim. Found in Wellesley Road, 1912. 3rd Century, A.D. Donor, Councillor Penry Rowland, M.D. (*Plate, VI.*). 4384-4386.23

PLATE VII.



*Photo by the Curator*

See pages 14-17, Nos. 4337, 4352-3, 4360, and 4384-6, 23



Small bronze Fibula, the cylindrical head and bow ornamented with parallel grooves, part of hinge-pin wanting. Late 1st Century A.D., and small bronze Key, with loop for suspension; similar to Fig. 66 Ward's *Roman Era in Britain*. 1st to 2nd Century, A.D. Donor, Mrs. Townsend. 4387-88.23

Burial Group, consisting of Flagon of buff ware with saucer-shaped mouth and oviform body. Porringer of greying brown ware with black exterior, rounded undercut rim and bevelled base, "Samian" Cup (Form 33) with potter's stamp **CIIRTIMA**. Baby's Feeding Bottle of buff ware with upright curved neck and girth grooves on shoulder. Found in grounds of the Essex County Hospital in 1914. 2nd Century, A.D. Donor, Dr. C. Warner. (*Plate, VII.*) 4396-9.23

With the above was found the small grey ware pot figured in Annual Report, 1914, Pl. iii, 2920.14. Certus, was a potter working at probably Heddernheim.

Several fragments of Pottery, found by donor on the Potters' Kiln Field. 1st Century, A.D. Donor, Mr. E. T. Chisnell. 4403.23

Cinerary Urn, of grey ware with undercut roll rim, with tooled groove below, containing burnt human bones. Found in donor's garden in St. Clare Road not far from the Pedestalled Urn, 4311.22. About 50-80 A.D. Donor, Mr. John Harper, B.A. 4404.23

Grotesque Human Mask, nose restored, of pale buff clay, from the side of a large vessel. Found about 30 ft. deep in a Roman well in Maldon Road. Purchased. 4405.2

Large cover of Bowl of pale buff ware with metallic blue-black glaze; ornamented with rouletted bands between girth grooves and cordon. About 3rd Century, A.D. Found in donor's garden on North Hill, Donor, Mr. A. W. Frost. 4406.23

Fragments of Roman and Medieval wares found at Colne Engaine, 1922. Donor, Mr. Duncan W. Clark, A.R.I.B.A. 4416.23

Fragments of Roman and Medieval wares from excavations in Bastion of Roman Wall, South of East Hill House, 1923. Donor, Dr. Philip Laver, F.S.A. 4417.23

Cinerary Urn, containing burnt bones, of fine hard grey ware, with upright curved neck and out bent rim, the body scored to within two inches of base with fine horizontal lines; base polished and slightly hollow with concentric grooves, and cover, or lid, of pale red ware. Belgic. 1st Century, A.D. Found in West Lodge Road, 1923. Donor, Dr. Philip Laver, F.S.A. 4418-19.23

A collection of fragments of worked and unworked Marbles of various kinds from Roman buildings of importance in Colchester. Found during excavations for the new sewer in Culver Street, 1922. Donor, Dr. Philip Laver, F.S.A. 4429.23

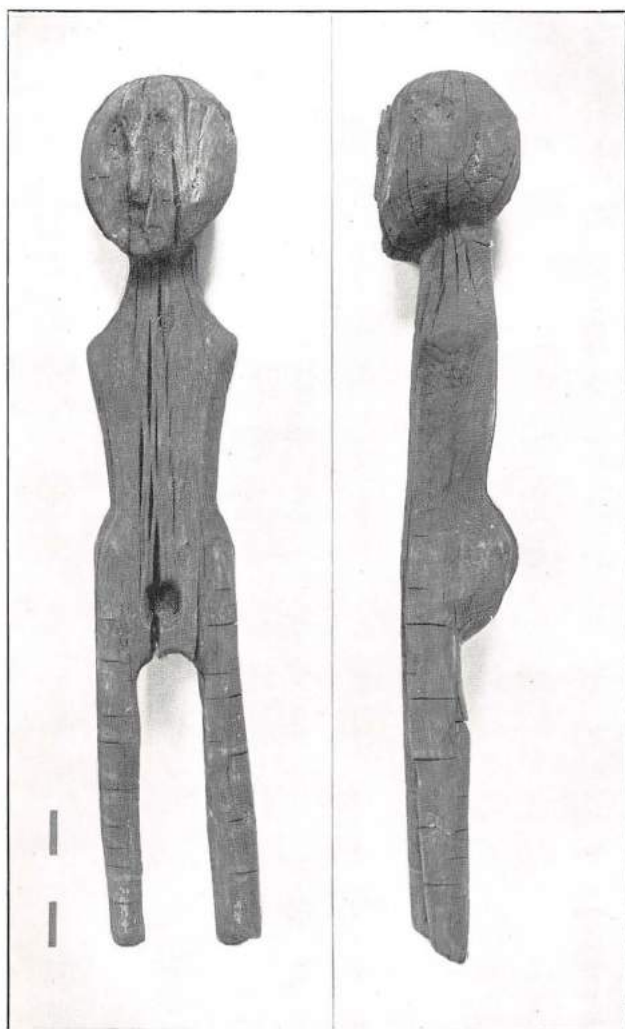
A large number of Tiles, Bricks, fragments of Pottery of various kinds, including "Samian" with potters' stamps, and other antiquities of Roman and later periods. Found during excavations for new sewer in Culver Street, 1922. Donor, Dr. Philip Laver, F.S.A. 4430.23

Two bone and one bronze Pins and portion of a pair of bronze Scales. Found in excavation in Castle quadrangle, 1922. 4431.23

Bronze Fibula with strongly reflex and fluted bow expanding to the semi-circular cover which protects the bilateral coiled spring, the chord of which is held in position by a hook; the catch plate has two perforations. Found in excavation in Castle quadrangle on the top of the vault, 1922. 4432.23

Portion of Mosaic Floor of Geometrical design, in black, red, yellow, blue and white tesserae with border of large red tesserae. Found in donor's garden, North Hill. 15 feet X 9 feet. About 3rd Century, A.D. Donor, Mr. A. W. Frost. 4433.23

PLATE I.



*Photo by the Curator.*

See page 10, No. 4351.22.



Rim fragment of "Samian" Bowl with flange (Form 38). incised on rim are the letters, **VIRI**. About 250 A.D. Found in Grammar School grounds, 1923. Fragment of Bowl (Form 37) with large leaf scroll decoration in the style of Cinnamus, a potter of Lezoux in the Hadrian - Antonine period. Found on West Lodge estate, 1923. Donor, Mr. M. R. Hull. 4435-36.23

### ANGLO-SAXON PERIOD.

Fragment of Cinerary Urn of coarse brown ware, ornamented with tooled horizontal lines and triangular groups of rosettes and semi rosettes. Found at Chadwell St. Mary. Donor, Rev. E. C. Smith, B.D. 4268.22

Rudely carved nude Human Figure of fir-wood, 19 $\frac{1}{4}$  inches in height. The image has no arms and the legs are straight and cylindrical without feet. The head is round and the posterior parts well developed; above the crotch is a circular socket probably intended for the insertion of a *phallus*. Found nine feet below the surface during excavations for a sewer on the edge of the marshes at Dagenham, 1922. Viking Period, about 9th Century, A.D. Donor, Mr. W. J. Grant. (Plate, I.). 4351.22

Similar figures have been found at Roos Carrs, in Holderness and are preserved in the Hull Municipal Museum. See *Hull Museum Publications*, Nos. 4 and 14, where they are fully described and illustrated by Mr. Thomas Sheppard, M.Sc., at Kingsteignton, Devon, see Mr. H. G. Dowie, *Journal*, Torquay Nat. Hist. Society, 1922. and in Scotland and Scandinavia, see *Proceedings of the Society of Antiquaries of Scotland*, Vol. iii, New Series, 1880-81, pp. 158-178. Also *Trans.*, Essex Arch. Soc., Vol xvi.

### MEDIEVAL AND LATER PERIODS.

Pattern and Mould for producing gesso panels for Chimney piece and wall decoration. The wooden pattern is carved in high relief and represents a pseudo-classical marriage scene of Amorini. The plaster mould represents a similar subject. 18th Century. Donor, Mr. Nathan Wade. 4202-03.22

Pair of steel Snuffers with lacquered Tray. Early 19th Century. Donor, Mrs. Ellen Clarke. 4207.22

Portion of Fringe of red wool, used for decorating Hounces or Housings of horses. 19th Century. Donor, Mr. G. C. Brown. 4213.22

Antique Oil Lamp with double glass globes. Probably a Riding Lamp for a ship or yacht. Early 19th Century. Donor, Mrs. Adelaide Cater. 4215.22

Flint-lock Pistol with carved stock and ornamental iron mounts. 18th Century. Donor, Mrs. Adelaide Cater. 4216.22

Sickle for left handed reaper, the blade stamped Spurling. 19th Century. Donor, Mrs. Adelaide Cater. 4217.22

Antique Nursery Toy, sometimes called a Bandalore and a Quiz, consisting of two discs of polished wood slightly separated by an axle on which a string is wound. The game was to let the discs run down the string and by a jerk cause them to run up again. Used about 90 years ago by the donor. Donor, Mrs. Alfred Harwood. 4218.22

Alarum or Ringing Lock, with key; the alarum rings on locking or unlocking the lock. Donor, Mr. Fred Godfrey. 4228.22

Old Blue-ball, used in washing linen. Mid 19th Century. Donor, Mrs. Ellen Clarke. 4229.22

Small horn Powder Flask and small embossed copper ditto, 18th to early 19th Century. Purchased. 4234-35.22

Scotch Toddy Ladles in wood and bone. Early 19th Century. Donor, Mr. Francis H. Newbery. 4236-37.22

Fragments of Medieval Mortars and Tiles, etc., found at May Barn, Dedham. Donor, Sir William Collingwood. 4238.22

Pistol used in firing big guns. Found in ditch at Tilbury Fort. Donor, Rev. E. C. Smith, B.D. 4275.22

Iron Shackles and Chain found on the legs of a skeleton in Chadwell St. Mary Churchyard and removed before re-burying by the Rector and donor. 18th Century. (?) Donor, Rev. E. C. Smith, B.D. 4276.22



- Iron Horse Shoe with slight calkin's and five nails. Found in an old bank at Wigborough. 15th Century. Donor, Mr. A. Curtiss. 4277.22
- Oak Peg from roof of Great Bentley Church. 14th Century. Donor, Dr. Philip Laver, F.S.A. 4279.22
- Iron Hammer-head with claws and moulded hammer. Early 19th Century. Donor, Mr. E. J. Wilton. 4286.22
- Iron piped key with S-shaped wards and loose ring handle. 18th Century. Donor, Mr. F. Farman. 4288.22
- Brick and portions of five Tiles from the excavations made at Pleshey Mount, in 1921-22. 13th and 14th Century. Donor, Dr. Philip Laver, F.S.A. 4291.22
- For a Report on these excavations, see *Trans. Essex Archaeological Society*, N.S. Vol. xvi. pp. 190-204.
- Brass Bodkin and Earpick combined. Found in donor's garden on North Hill. Early 18th Century. Donor, Mr. A. W. Frost. 4295.22
- Japanned Nutmeg Grater. Early 19th Century. Purchased. 4296.22
- Pocket Candle and Match Holder in White Metal. 19th Century. Purchased. 4297.22
- Petroleum Torch, "Salsbury's Patent Anti-Candle for Petroleum, burns 14 hours, made in London at S.L.W." Early 19th Century. Purchased. 4298.22
- Small Phial of green glass with wide rimmed mouth, height 1½ in. 17th Century. Purchased. 4302.22
- Piece of Wattle and Daub from Hazeleigh Church, pulled down 1922. Donor, Mr. J. W. Tanner. 4306.22
- Pair of Iron Tongs. 18th Century. (?) Donor, Mr. E. J. Wilton. 4308.22
- Small Iron Knife in wooden handle. 14th or 15th Century. Purchased. 4338.22



Iron object resembling a pair of dividers, imperfect. Found on North side of Klingoe Hill, 1921. Date uncertain. Donor, Dr. Philip Laver, F.S.A. 4339.22

Tall bottle-shaped Costril or Pilgrim's Bottle, of marbled red ware with lustrous glaze; on either side are two lion-head loops for leathern thong for suspension. Height 11 inches. English, 16th Century. Found in Colchester about 50 years ago. Donor, Mrs. Herring. (*Plate IX.*) 4340.22

Iron Key with broached stem and reni-form bow; length,  $5\frac{1}{2}$  inches. 14th to 15th Century. Small ditto with piped stem, moulded at junction with reni-form bow, length,  $3\frac{5}{8}$  inches. 17th Century. Large ditto with broach ending in knob, the stem with slight offset below wards tapers to a collar of five wide and narrow cordons and bulbous reni-form bow. Length, 9 inches. 18th Century. All found in the donor's garden at Warley Place. Donor, Miss Willmott. 4343-45.22

Two Horseshoes and two Tobacco-pipes, Dutch type. Found on site of London & County & Westminster Bank. Purchased. 4348-49.22

Small Memorial Ring of Copper, inscribed *Memento Mori*, probably originally gilded. Found in donor's garden on North Hill. 18th Century.? Donor, Mr. A. W. Frost. 4357.22

Circular Lead Weight stamped with figure of an angel in a sunk oval. Diameter,  $2\frac{1}{8}$  ins., thickness  $\frac{3}{8}$  in., weight,  $15\frac{1}{4}$  ozs. Donor, Dr. Philip Laver, F.S.A. 4358.22

Iron Strike-a-light, formerly used in East Mersea Church 18th or Early 19th Century. Donor, Mr. J. Ashton Turner. 4359.22

Lead Bulla, or Seal, of Pope Innocent VIII. *Obv.* Heads of SS. Peter and Paul. *Rev.* **INNOCENTIVS P.P. VIII.** Found in donor's garden on North Hill. Donor, Mr. A. W. Frost. 4390.23

Tobacco-pipe, time of Charles II. Purchased. 4391.23



*Photo by the Curator.*

See page 22, No. 4340.22.

Iron Rowel Spur, found on Harwich Road allotment.  
Purchased. 4392.23

Two Samplers, worked in black, by Jane and Louisa  
Osborn. One dated 1826, the other unfinished. Donor,  
Miss L. Elizabeth Gardner. 4401.23

The Osborns were friends of Alderman Henry Vint, of Lexden.  
The former, Jane, was grandmother of the first, if not the only,  
Colchester schoolmaster killed in the war, 1916, Edgar Harold  
Gardner, R.E., brother of the donor.

Portion of Glass Flagon with circular glass medallion  
stamped with crowned coat of arms above which are  
the words **PYRMONT WATER**. Found during  
excavations in Castle Quadrangle, 1922. 4415.23

#### COINS, TOKENS, MEDALS.

Republican Denarius of Cn Lentulus Marcellinus, *obv.*  
Genius of the Roman people, **GPR**. *Rev.* Globe,  
rudder and laurel wreath. *Exergue*, S.C. **CN LEN Q**  
Struck in Spain, c. B.C. 75. Found in Union Grounds.  
Donor, Mr. A. E. Purkiss. 4201.22

Kindly identified by the Keeper of the Coins and Medals, British  
Museum.

Four Roman Coins found at Kelvedon, viz (1) "First Brass"  
of Trajan, *Rev.*, Figure with Cornucopia, legend  
illegible. (2) ditto of Marcus Aurelius, *obv.* **M**  
**ANTONINVS AVG TRP XXIX**. *Rev.* Figure march-  
ing to l. holding a Victory. S.C., legend illegible. (3)  
"Second Brass" of Claudius, *Rev.* Mars with spear and  
shield, S.C., legend illegible. (4) Ditto of Antoninus  
Pius, *Rev.* legend illegible. Donor, Captain Andrew  
Hamilton. 4211.22

Threepenny-bit of William III., 1836. Donor, Mr. E. R.  
Butcher. 4224.22

Trade Token of Thomas Peeke, Wyre Street in Colchester.  
17th Century. Purchased. 4245.22

Trade Token of Jonas Whale, Baker in Colchester. 17th  
Century. Purchased. 4246.22



Fourpenny-bit of William III., 1836. Donor, Mr. W. Taylor. 4278.22

Silver Denarius of Marcus Aurelius. *Obv.* Bust to r. **AURELIVS CAESAR AVG PIIF.** *Rev.* **TR POT III. COS II.** Purchased. 4287.22

Pattern Crown of Victoria. *Obv.* Crowned bust to l. **VICTORIA DEI GRATIA BRITANNIAR REG. F.D.** *Rev.* as florin, roses, thistles, and shamrock in angles **TUEATUR UNITA DEUS ANNO DOM MDCCCXLVII.** On rim **DEVS ET TVTAMEN,** etc. Donor, Mr. Arthur H. Neville. 4300.22

"Second Brass" Coin of Commodus, struck in his third consulate, A.D. 181. Purchased 4301.22

"First Brass" Coin of Hadrian, legend and reverse undecipherable. Found in Castle Park. Purchased. 4309.22

"Third Brass" Coin of Constantine family, legend undecipherable. *Rev.* Soldiers with Standard. Found in donor's garden. Donor, Mr. A. W. Frost. 4317.22

Token of W. J. Sale, Clothier, etc., 15 Culver Street, Colchester. Found in donor's garden. Donor, Mr. A. W. Frost. 4318.22

Billon Denarius of Postumus. *Rev.* A galley, **LAETITIA AVG.** Found at West Mersea. Donor, Mr. Ashton Turner. 4320.22

Copper Forgery plated with silver of shilling of George III, 1816. Found in donor's garden. Donor, General G. B. Skinner, C.B., C.M.G., M.V.O. 4321.22

"First Brass" Coin of Lucilla, wife of Verus. *Obv.* **LVCILLAE AVG ANTONINI AVG.** *Rev.* Standing figure to left. S.C. in field, legend illegible. Found at the Hythe. Purchased. 4322.22

See Akerman, *Roman Coins*, Vol. 1. p. 301.

- Half Groat of James I, second issue, Rose and Thistle crowned, 1607. Found at Pleshey, 1922. Donor, Dr. Philip Laver, F.S.A. 4323.22
- Jetton, or Reckoning Counter, without inscription, probably 16th Century. Found in Castle Park. Purchased. 4324.22
- "Second Brass" Coin of Claudius. *Obv.* Head to l. TI CLAVDIVS CAESAR AVG PM. *Rev.* Helmeted figure with spear to l. CONSTANTIAE AVGVSTI S.C. Rare. Donor, Mr. H. Byrne. 4330.22
- "Second Brass" Coin of Sabina, wife of Hadrian. *Rev.* IVNONI REGINAE S.C. Purchased. 4331.22
- Farthing, George I, 1720. Purchased. 4332.22
- "Second Brass" Coin of Domitian. Legend illegible. Purchased. 4333.22
- Irish Silver Bank Token of George III., Tenpence, 1805, in fine state. From Mr. J. Spelman. 4356.22
- Trade Token of Martin Langley in Colchester. 17th Century. Purchased. 4361.23
- Twopenny Piece of George III., 1797, in good state. Purchased. 4362.23
- Trade Token of John Smith of Harwich. 17th Century. Donor, Mr. J. H. Fleming.
- "Second Brass" Coin of Vespasian; "Third Brass" Coins of Valens, Constantine II. and Constantine the Great. Purchased. 4365-69.23
- Penny of Victoria, 1854, and Bronze Medal to Commemorate 60th year of her reign, 1897. Donor, Mr. H. Byrne. 4371-72.23
- "Second Brass" Coin of Marcus Agrippa; Silver Denarius of Faustina, jnr.; "Third Brass" Coins of Elagabalus, Geta and Constantine the Great. Donor, Mr. F. L. Wright. 4374.23

Counting Token, or Jetton, *obv.* Shield of three fleurs-de-lys.  
**GRACI PLENA MARIA.** *Rev.* illegible. 15th Century.  
 Donor, Mr. F. Pooley. 4378-23

"First Brass" Coins of Trajan (1) and Aurelius (2). Purchased. 4393-98.23

Three Silver Prisoner of War Checks, one octagonal for 10/-, two circular for 2 6. Crimean Period. Donor, Mr. E. H. Kearton. 4400.23

### MANUSCRIPTS, PRINTS, MAPS, PHOTOGRAPHS. LANTERN SLIDES AND PRINTED MATTER.

Six Pencil Drawings of Views in Colchester by Josiah Parish, made in 1854 for J. Harwood, Engraver, of 26, Fenchurch Street, London. (1) Interior of St. Botolph's Priory, (2) South View of Colchester Castle, (3) High Street looking East, (4) St. James' Church, (5) St. Nicholas' Church, (6) Trinity Church with Saxon Tower. The drawings are on Bristol Boards, 15 ins.  $\times$  12½ ins. Purchased. 4204.22

Engraving of St. James' Church, made from a drawing by Josiah Parish in 1854. J Harwood, Engraver. (Father of donor). 11¼ ins.  $\times$  8¼ ins. Donor, Mr. J. A. Harwood. 4205.22

Photograph of Bronze Head of Silenus, found in excavation at Ilkley, Yorks., July, 1921. Donor, Mr. Arthur H. Woodward. 4208.22

Colchester Deed of 1660, in which reference is made to "the Village of Colchester," with signature of Sir Thomas Lucas? as Recorder. Donor, Alderman Gurney Benham, F.S.A., F.R.Hist. S. 4212.22

Two Photographs of Late-Celtic Fibulæ, found at Æsica. Donor, Mr. Parker Brewis, F.S.A. 4219.22

Seven Lantern Slides of Views of Trinity Church and Parish Maps. Donor, Dr. Philip Laver, F.S.A. 4225.22



Water Colour Miniature, in polished mahogany frame, of Miss Chaplin, of Copford, sister to Mr. William Chaplin, Driver of Mail for many years to Brightlingsea and first mail man to take letters to the old Moot Hall. Donor, Mrs. Thorrington. 4230.22

Four Lantern Slides of Trinity Church, (1) Hood Mouldings, Lion and Cub, (2) Prior, (3) East Side of Tower and (4) South Door. Donor, Mr. Harrington Lazell. 4231.22

Facsimile Sketches of Bollington Hall and Hake from Hall, now in the Museum. Donor, Mr. F. S. Griffiths. 4232.22

One hundred and thirty-six Picture Postcards of Roman and Medieval Remains at Autun, Fréjus, Périgueux, Toulouse, etc., France. Donor, Captain H. E. Laver. 4233.22

Four Pencil Drawings of Communion Rails and Pew, St. Osyth and Doorways at Great Bentley and Clare Churches, made by the donor between 1883 and 1887. Donor, Mr. E. T. Lingwood. 4240.22

Mounted Photograph of Captain Thomas Ennew, of H.M.S. "Belleisle," whose China Medal, 1842, he bequeathed to the Museum. Donor, Mr. William Sebborn. 4241.22

Large Mounted Photograph of Fourteenth Century Eucaustic Tiles, sold by auction by Messrs. Sotheby, Wilkinson and Hodge, 3rd March, 1922. Donor, Mr. B. C. Creasy. 4289.22

These tiles were thought to have come from St. Peter's Chapel, Bradwell-Juxta-Mare, Essex.

Three Photographs and two Prints of Bronze Age Pottery from Caythorpe and Grantham, Lincs. Donor, Mr. H. Preston, F.G.S. 4307.22

Photo Postcards of two Late-Celtic Pots and an Iron Rowell Spur, found at Orsett. Donor, Mr. G. E. Chambers. 4316.22

Three volumes of MSS from the Morant-Astle Collection, (1) Index to Heylin's *Help to History*, and Armorial Bearings of several Ancient and Illustrious Families, collected A.D. 1796. (2) Historical Collections consisting of Journals of Tours. Pedigrees of Ancient and Noble Families. Armorial and Church Notes, with numerous corrections and additions to Morant's *History of Colchester*, A.D. 1791-1800. (3) Historical Collections similar to above, A.D. 1791-1795. Donor, Alderman W. Gurney Benham, F.S.A., F.R.Hist.S.

4327-29.22

Two Lantern Slides (1) Statue of Aurelius Bassus, Curator of Camulodunum, in the Vatican Collection. (2) Letter from R. T. to Sir John Trevannion, prisoner in Colchester Castle, c. 1648. Donor, Councillor A. M. Jarmin, F.R.Hist.S.

4346-47.22

Seven Picture Postcards of Prittlewell Priory. Donor, Mr. William Pollitt.

4350.22

Four Photographs and one Print of Ladies' Riding Saddles, from 1870-1922. Donor, Mr. G. C. Brown.

4364.23

Sets of British Museum Postcards, Early Iron Age and Portraits of Roman Emperors. Donor, Dr. Philip Laver, F.S.A.

4376-77.23

Four Lantern Slides of Roman Pavement in Mr. Frost's garden; Excavations in Park and Interior of Thaxted Church. Donor, Mr. Harrington Lazell.

4379.23

Volume of MSS., from the Morant-Astle Collection (No. 165). Family Letters from The Revd. Mr. Edward Creffield of Popes in Chapel, Co. Essex, and The Revd. D. Creffield of Bildeston, Co. Suffolk. To the Revd. Mr. Morant, &c. From A.D. 1741 to 1767. Donor, Alderman Gurney Benham, F.S.A., F.R.Hist.S.

4389.23

Photograph of Late-Celtic Anthropoid Dagger, Iron Axe head, etc. from Cremation Pit Burial, Ham Hill, Somerset. Donor, Dr. R. Hensleigh Walter, F.S.A.

4402.23

PLATE VIII.



*Photo by the Curator.*

See pages 15 and 29, Nos. 4355.22 and 4414.23.



Seventy-eight Picture Postcards of Brittany, Dolmens, Cromlechs, and other antiquities, and three Panoramic cards of the Stone Alignments at Carnac. Donor, Captain H. E. Laver. 4228.23

Twenty-seven photographs of the Laver collection of Stone Implements deposited on loan in the Museum. Donor, Captain H. E. Laver. 4434.23

### DEPOSITED.

Collection of Stone Implements, consisting of Rubbers, Axes, Scrapers, Arrow-heads, etc., found by depositor at Colchester, Walton-on-Naze, Mersea, etc. Deposited by Mr. Arthur F. Jarmin, jun. 4239.22

Three Bronze Palstaves, one from a hoard found near Havering, 1883, the other two found near Grays, 1870. Horn Tool made from a tine of Red Deer's antler; and a Bone Tool or Weapon, with two small perforations, made from the upper end of the ulna of an artiodactyl, probably Bos, both found in a peaty deposit at Ilford in 1918. Deposited by Mr. Charles H. Butcher. 4281.4285.22

The bone of which the last tool was made, was kindly identified by Drs. Andrews and A. Smith-Woodward of the Natural History Museum, South Kensington.

A Small Collection of Roman Antiquities formed by the depositor, consisting of fragments of decorated "Samian" and other ware, bones and bronze pins, spoons, bracelet, bone hinge, coins, etc., all found in Colchester. Deposited by Mr. A. F. Jarmin, junr. 4413.23

"Samian" Bowl (Form 30) of deep red ware with decoration of Festoons and large Medallions within which are figures of animals, beneath a band of *ovolo* ornament. On a small label across base of a medallion is the Potter's name stamped backwards, **LATINNI**. Latinnus worked at Rheinzabern about 160-200 A.D. Height,  $5\frac{1}{2}$  ins. Diam.,  $6\frac{1}{2}$  in. Found in depositor's garden at corner of St. Clare Road. Deposited by Mrs. Cresswell Rooke. (Plate, VIII.). 4414.23

**ADDITIONS TO MUSEUM LIBRARY,  
From 1st April, 1922, to 31st March, 1923.**

- Hull Museum Publications, Nos. 124 to 132, No. 8.  
Donor, Mr. Thomas Sheppard, M.Sc., F.G.S., etc.  
L.147, 148, 169, 237
- A Roman Cemetery discovered at Ospringe in 1920. By  
W. Whiting. (Reprint). Donor, the Author. L.149
- Journal of Roman Studies. Vols. X., 1920, XI., part 1,  
1921. By Subscription. L.151, 194, 239
- British Numismatic Journal. Second Series. Vol. V. By  
Subscription. L.152
- British Museum. Guide to the Exhibition illustrating Greek  
and Roman Life. 2nd Edition. Purchased. L.153
- British Museum. Guide to the Antiquities of Roman  
Britain. Purchased. L.154
- Roman Leicester. By Professor Haverfield, LL.D. D. Litt.,  
F.B.A., F.S.A. (Reprint). Donor, Miss M. V. Taylor.  
L.156
- The Connoisseur, June, 1922, containing article on  
Centurion Monument. Donor, Mr. F. Gordon Roe.  
L.160
- Excavations at the Stone Age Factory of Craig-Lwyd,  
Penmaenmawr. By S. Hazzledine Warren, F.G.S.  
(Reprint). Donor, Dr. R. E. Mortimer Wheeler, M.C.,  
M.A., F.S.A. L.161
- The Bulletin of the Board of Celtic Studies. Vol. I. part 2.  
Donor, Dr. R. E. Mortimer Wheeler, M.C., M.A., F.S.A.  
L.162
- Les Monuments Mégalithiques de Carnac et de Locmariaquer.  
Par Zacharie le Rouzic. Donor, Captain H. E. Laver.  
L.163
- Le Palais Gallien. Ville de Bordeaux. Donor, Captain  
H. E. Laver. L.164

- The Corinium Museum, Cirencester. Eleventh Edition  
Revised, 1922. Donor, Mr. E. C. Sewell. L.166
- British Museum. Guide to the Fossil Remains of Man.  
Third Edition. Purchased. L.167
- Victoria and Albert Museum. Ironwork. Part III. By  
J. Starkie Gardner. Purchased. L.168
- Les Figurines en Terre Cuite. Par Léon Coutil. Text and  
Atlas. Purchased. L.173
- The Roman Forts of Templeborough, near Rotherham.  
By Thomas May, M.A., F.S.A., F.S.A. Scot. By Sub-  
scription. L.174
- A Hoard of Bronze discovered at Grays Thurrock. By  
Charles H. Butcher. (Reprint.) Donor, The Author.  
L.175
- Essex Naturalist. Vol. XX., parts 2 and 3. Donors,  
Council of Essex Field Club. L.177, 228
- Department of Scientific and Industrial Research. The  
Cleaning and Restoration of Museum Exhibits. Re-  
ports upon Investigations conducted at the British  
Museum. Purchased. L.178, 229
- Roman and Native in Wales: An Imperial Frontier  
Problem. By R. E. Mortimer Wheeler, M.C., D. Lit.,  
F.S.A. (Reprint) Donor, The Author. L.182
- Stonehenge. To-day and yesterday. By Frank Stevens.  
Purchased. L.183
- On an Early Chellian Palæolithic Workshop-site in the  
Pliocene Forest Bed of Cromer, Norfolk. By J. Reid  
Moir. (Reprint). Donor, the Author. L.184
- Archæologia, Vol. LXXI, 1920-21. Purchased. L.185
- The Connoisseur, November, 1922. Containing article on  
Bollington Hall Hake. Purchased. L.187



- The Antiquaries Journal, Vol. II., 1922. By Subscription.  
L.188
- Justa Grata Honoria. By J. B. Bury. (Reprint). Donor,  
the Author. L.189
- The Notitia Dignitatum. By J. B. Bury. (Reprint). Donor,  
the Author. L.190
- Catalogue of Roman Inscribed and Sculptured Stones in  
the Carlisle Museum. By the late F. Haverfield, LL.D.,  
D.Litt., F.B.A., etc. Second Edition, 1922. Donor,  
Mr. E. Linnaeus Hope, F.L.S. L.191
- Catalogue of Romano-British Fibulæ in the Museum,  
Tullie House, Carlisle. By Professor F. Haverfield,  
LL.D., F.B.A., F.S.A., etc., 1919. (Reprint). Donor,  
Mr. E. Linnæus Hope, F.L.S. L.192
- Richborough Castle. Official Guide. By J. P. Bushe-Fox,  
F.S.A. Donor, Mr. A. G. K. Hayter, F.S.A. L.195
- Hoard of Neolithic Celts. By Reginald A. Smith, F.S.A.  
(Reprint). Donor, the Author. L.197
- Proceedings of the Prehistoric Society of East Anglia.  
Vol. III. part 4. By Subscription. L.198
- The Roman Villa Museum at Rabat, Malta. By T. Zam-  
mit. Donor, Sergeant H. A. French, R.A.M.C. L.199
- St. Mary-at-the-Walls, Colchester. An Address by Canon  
G. H. Rendall, Litt.D. (Reprint). Donor, Rev. S.  
Wilson. L.200
- A Romano-British Homestead in the Hambleden Valley,  
Bucks. By Alfred Heneage Cocks, M.A., F.S.A.  
(Reprint). Donor, Mr. Thomas May, M.A., F.S.A.,  
F.S.A. Scot. L.201

- Historical Association, Time Charts. By Helen M. Madeley.  
Ditto. Roman Britain. By A. Trise Martin, M.A.,  
F.S.A. Ditto. Pictures of Parliament. Reprinted  
from The Evolution of Parliament by A. F. Pollard,  
M.A., Litt. D., F.B.A. Donor, The Curator, Mr.  
A. G. Wright. L 202, 203, 204
- Roman Britain. Reprinted from the Year's Work in  
Classical Studies. By F. A. Bruton. Donor, the  
Author. L.205
- The Gods of the Wall. By Lieut.-Colonel G. R. B. Spain,  
C.M.G. (Extracted from Cornhill Magazine, Dec. 1922.)  
Purchased. L.206
- Natural History, The Journal of the American Museum of  
Natural History, New York. Vols. XXI., 1921,  
XXII., 1922. Donors, the Trustees of the Museum.  
L.207, 208
- Excavations about the Site of the Roman City at Silchester,  
Hants, in 1909. By W. St. John Hope, Esq., M.A., and  
Mill Stephenson, Esq., B.A., F.S.A. (Reprint). Donor,  
the Rev. J. W. Hayes. L.209
- Pottery of the New England Indians. By Charles C.  
Willoughby. (Reprint). Donor, the Rev. J. W. Hayes.  
L.210
- The Decorative Ornamentation on Essex Elizabethan  
Communion Cups. By Rev. W. J. Pressey, M.A.  
(Reprint). Donor, the Author. L.212
- The Kingsteignton Idol. By H. G. Dowie. (Reprint).  
Donor, the Author. L.213
- Caer Llugwy. The Roman Fort between Capel Curig and  
Bettws-y-Coed. By J. P. Hall, F.S.A. Donor, the  
Author. L.215
- The Roman Camp and the Irish Saint at Burgh Castle.  
By Louis H. Dahl, M.A. Purchased. L.219
- Museums Journal. Vol. XXI. 1921-22. By Subscription.  
L.223

- Morant Club Report. Excavation of Foundations on the Castle Keep at Pleshey. By Miller Christy. (Reprint). Donor, the Author. L.224
- On an Earthwork to the North East of Essex. By P. G. Laver, F.S.A. (Reprint). Donor, the Author. L.225
- A Map of Ancient Sites in the New Forest, Cranbourne Chase and Bournemouth District. By Heywood Sumner, F.S.A. Mounted on cloth in case. Donor, the Author. L.226
- An Essex Brass. By Miller Christy and W. W. Porteous. (Reprint). Donors, the Authors. L.230
- Töpfer und Fabriken Verzierter Terra-sigillata des Ersten Jahrhunderts von Robert Knorr. Purchased. L.231
- The Segontium Excavations, 1922. By R. E. M. Wheeler, D. Lit., F.S.A. (Reprint). Donor, the Author. L.233
- British Museum Guide to the Anglo-Saxon and Foreign Teutonic Antiquities, 1923. Purchased. L.235
- Eight Chapters on English Medieval Art. By E. S. Prior, A.R.A. Purchased. L.236
- Spinks Numismatic Circular, Vol. XXX., 1922. By Subscription.
-



## Reports

RECEIVED FROM APRIL 1ST, 1922, TO MARCH 31ST, 1923.

Cambridge, Fitzwilliam Museum  
Cambridge, Friends of the Fitzwilliam Museum  
Cambridge, Museum of Archæology and Ethnology  
Cardiff, The National Museum of Wales  
Chester, Society of Natural Science, etc.  
Colchester Public Library  
Dublin, National Museum of Science and Art.  
Edinburgh, Royal Scottish Museum  
Ipswich, Borough Museums and Art Gallery  
London, Congress of Archæological Societies  
London, Society for Promotion Hellenic Studies  
New York, American Museum of Natural History  
Northampton, County Borough Museum  
Norwich, Castle Museum  
Oxford, Ashmolean Museum  
Oxford, University Museum  
Peterborough, Natural History, Scientific and Archæological Society  
Plymouth, Municipal Museum and Art Gallery  
Salisbury, South Wilts and Blackmore Museums  
Spalding, Gentlemen's Society  
Sydney, N.S.W. Technological Museum  
Taunton, Castle Museum  
Washington, U.S.A., National Museum  
Warrington, Municipal Museum  
Wisbech, Museum  
Yorkshire Philosophical Society

*N.B.—Curators of Museums will much oblige by forwarding their reports in exchange as issued.*

## List of Donors.

American Museum of Natural History, Trustees of (New York)  
 Barrett-Lennard, Sir T. (Norwich)  
 Benham, Alderman W. G. (Chairman of Committee)  
 Bilney, B. J. V. (Brightlingsea)  
 Brewis, Parker (Newcastle-on-Tyne)  
 Brown, G. C.  
 Bruton, Dr. F. A. (Manchester)  
 Burrows, Rev. C. R. N. (Mucking)  
 Bury, Professor J. B. (Cambridge)  
 Butcher, C. H. (Ilford)  
 Butcher, E. R.  
 Byrne, H.  
 Cater, Mrs. Adelaide  
 Chambers, G. E. (London)  
 Clark, Duncan W.  
 Clark, Mrs. Ellen  
 Chalmers, A. (Tendring)  
 Chisnell, E. T.  
 Christy, M. (London)  
 Collingwood, Sir W. (Dedham)  
 Creasy, B. C. (Chelmsford)  
 Curtiss, A. (Wigborough)  
 Dowie, H. G. (Paignton)  
 Durrant, W. E.  
 Ellison, Mrs. O. J.  
 Essex Field Club, Council of (Stratford)  
 Everett, H., & Son  
 Farman, F.  
 Fleming, J. H.  
 French, J. (Clacton-on-Sea)  
 French, Sergeant H. A. (Malta)  
 Frost, A. W.

Galpin, Rev. Canon (Faulkbourne)  
 Gardner, Miss L. E. (Brighton)  
 Godfrey, F.  
 Grant, Councillor (Braintree)  
 Grant, W. J. (Romford)  
 Griffiths, F. S. (Dedham)  
 Hall, J. P. (Oldham)  
 Hamilton, Capt. A. H. (Kelvedon)  
 Harper, J.  
 Harwood, J. A. (Windlesham)  
 Harwood, Mrs. A.  
 Hayes, Rev. J. W. (Loughton)  
 Hayter, A. G. K. (London)  
 Herring, Mrs.  
 Hope, E. L. (Carlisle)  
 Hull, M. R.  
 Hunnable, Councillor G. (Braintree)  
 Hunnable, F. (Braintree)  
 Hutton, Alderman W. Coats  
 Jarmin, Councillor A. M.  
 Kearton, E. H.  
 Laver, Captain H. E.  
 Laver, Dr. P. G.  
 Lazell, H.  
 Lingwood, E. T. (Westleton)  
 Marshall, V. E.  
 May, T. (Crieff)  
 Moir, J. R. (Ipswich)  
 Neville, A. H. (Beaconsfield)  
 Newbery, F. H. (Corfe Castle)  
 Officers of the R. A. Mess  
 Pollitt, W. (Southend-on-Sea)  
 Pooley, F.  
 Porteous, Dr. W. W.  
 Pressey, Rev. W. J. (Margaretting)



Preston, H. (Grantham)  
 Purkiss, A. E.  
 Roe, F. G. (London)  
 Rowland, Councillor Penry  
 Rowland, Hugh  
 Sebborn, W.  
 Sewell, E. C. (Cirencester)  
 Sheppard, T. (Hull)  
 Skinner, General G. B.  
 Smith, R. A. (British Museum)  
 Smith, Rev. E. C. (Chadwell St. Mary)  
 Spelman, J.  
 Sumner, H. (South Gorley)  
 Tanner, J. W. (Maldon)  
 Taylor, Miss M. V. (Oxford)  
 Taylor, W.  
 Thorrington, Mrs.  
 Townsend, Mrs.  
 Turner, A. (West Mersea)  
 Wade, N. (Eight Ash Green)  
 Walter, Dr. R. H. (Stoke-under-Ham)  
 Warner, Dr. C. (Woodford Green)  
 Weaver, F. J. (Braintree)  
 Wheeler, Dr. R. M. (Cardiff)  
 Whiting, W. (Faversham)  
 Willmott, Miss (Great Warley)  
 Wilson, Rev. S.  
 Wilton, E. J.  
 Windle, G. F. (Sudbury)  
 Woodward, A. H. (Headingley)  
 Wright, A. G. (Curator)  
 Wright, F. L.

### **Depositors.**

Butcher, C. H. (Ilford)  
 Jarmin, A. F., junr.  
 Rooke, Mrs. C.

## FORMS OF BEQUEST.

I bequeath out of such part of my personal Estate as may by Law be bequeathed for such purposes, to the Mayor, Aldermen and Burgesses of the Borough of Colchester, the sum of

free from Legacy duty, for the Benefit of the Corporation Museum of Antiquities, to be expended in such a way as they may deem expedient; and I direct that the receipt of the Treasurer for the time being of the said Borough shall be an effectual discharge for the same Legacy.

---

I bequeath\*

\*ANTIQUITIES

OR OTHER

OBJECTS to the Mayor, Aldermen and Burgesses of the Borough of Colchester (Free from Legacy Duty, which duty I direct shall be paid out of my pure personality) for the benefit of the Corporation Museum of Antiquities, either for Exhibition, or for such other purposes as they may deem expedient: and I further direct that the Receipt of the Town Clerk for the time being of the said Borough shall be an effectual discharge for the same Legacy.



REVERSE OF BOROUGH SEAL, 15TH CENTURY.)