

ESSEX SOCIETY FOR ARCHAEOLOGY AND HISTORY

(Founded as the Essex Archaeological Society in 1852)



Digitisation Project

COLCHESTER MUSEUM REPORTS

FOR THE YEARS ENDING

31 MARCH 1924

TO

31 MARCH 1926

2014

**ESAH REF:
C0924926**

BOROUGH OF COLCHESTER.

The Colchester Museum of Local
Antiquities.

(FOUNDED 1846.)



(OBERSE OF BOROUGH SEAL, 15TH CENTURY.)

REPORT
Of the Museum & Muniment Committee

For the Year ended 31st March, 1924.

Price Sixpence.

FRONTISPIECE.



Photo by the Curator.

See page 17, No. 4754.24.

Borough of



Colchester.

THE
Corporation Museum
OF
LOCAL ANTIQUITIES
(FOUNDED 1846).

REPORT
OF THE
Museum and Muniment Committee

For the Year ended 31st March, 1924.

PRICE—SIXPENCE.

COLCHESTER :
THE ESSEX TELEGRAPH LIMITED.
1924.

Committee and Officers.

COMMITTEE, 1923-24.

Alderman W. G. BENHAM, F.S.A., F.R.Hist.S., J.P., *Chairman.*

Councillor A. M. JARMIN, F.R.Hist.S., J.P., *Deputy-Chairman.*

THE WORSHIPFUL THE MAYOR.

(Councillor Mrs. C. B. ALDERTON, J.P.)

Alderman WILSON MARRIAGE, J.P., C.C.

Alderman W. COATS HUTTON, J.P.

Alderman J. T. BAILEY, J.P.

Alderman E. A. BLAXILL, J.P.

Councillor D. AGER.

*The following Members represent the
Essex Archæological Society :—*

Mr. PHILIP G. LAVER, F.S.A.

Mr. DUNCAN W. CLARK, A.R.I.B.A.

Mr. HARRINGTON LAZELL.

CURATOR :

ARTHUR G. WRIGHT.

ASSISTANTS :

W. F. BELL.

B. J. SIMPSON.

The Corporation Museum.

To the Mayor and Council of the Borough of Colchester.

GENTLEMEN,

We beg to submit our Report on the Corporation Museum for the year ended 31st March, 1924.

There has been a gradual increase in the number of visitors during the past three years, the total for the year ended 31st March, 1924, being 43,004—the highest recorded since 1920.

It is gratifying also to find a corresponding increase in the number of donors by whom valuable and interesting additions have been made to the various collections.

Again we have to record the acquisition of a fine and early example of a Roman Mosaic Pavement given by Mr. Douglas G. Round. It was found in Beryfield, in a garden in the occupation of Mr. W. C. Lewis, Mr. Round's tenant, in March, 1923 ; and your Committee is much indebted to Mr. Lewis for reporting the discovery and for giving every facility for its examination and removal.

Other valuable gifts include a large collection of Roman remains, including a small Household Altar and a "Samian" Vase, with barbotine decoration, from the Committee of the Essex County Hospital ; a Hoard of Axes and Gouge of the Late Bronze Age from Mr. H. J. Cunningham ; and a large Cinerary Urn of the same period from Mr. Sydney Hiscock.

A remarkably fine Burial Group, which includes a beautiful Glass Bowl with leaden lid and a Lamp of red ware, found in a brick tomb at West Mersea, and presented by Mr. Norman H. Bacon, is a notable addition to our already famous collection of Romano-British burial groups.

A richly carved and dated Oak Beam from the "Marlborough Head" at Dedham has been given by the Colchester Brewing Company, and to Miss Money we are indebted for a pair of 16th century carved oak Door Headings from a house in High Street.

Remaining valuable and interesting gifts and purchases are recorded in the following lists.

Two new wall cases have been placed on the piers in the corridor in which it is intended to arrange further additions to the collection of Bronze Age pottery.

The Collection of Medieval and later pottery has been re-arranged in the Upper Room, and the cases hitherto occupied by it in the N.E. Recess have been devoted to the Collection of Building Materials of the Romano-British Period.

A large portion of the Late-Celtic collection has been arranged in the wall cases of the S.W. Recess; while in the large case adjoining, the Amphoræ and other large domestic vessels, with two Burials, one in an amphora and the other in a large store vessel, have been more suitably displayed.

A good deal of ordinary routine work has also been carried out, such as cleaning, restoring and numbering specimens, re-arranging and labelling.

W. GURNEY BENHAM, *Chairman.*

A. G. WRIGHT, *Curator.*

Visitors to the Museum.

			1923-24.	
			Days open	Attendance.
April	25	4044
May	27	4223
June	26	4006
July	26	4222
August	27	10130
September	26	6149
October	27	2645
November	26	1531
December	24	1304
January	27	1440
February	25	1404
March	26	1906
<i>Total...</i>			312	43004

BANK HOLIDAY ATTENDANCES.

Easter Monday, 2nd April, 1923	...	673
Whit Monday, 21st May, 1923	...	531
August Monday, 6th August, 1923	...	466
26th December, 1923	...	106

The total number of Visitors for the year ending March 31st, 1903, was 20,887; 1904, was 27,039; 1905, was 28,408; 1906, was 29,588; 1907, was 31,078; 1908, was 30,875; 1909, was 29,842; 1910, was 34,453; 1911, was 29,423; 1912, was 27,298; 1913, was 32,149; 1914, was 29,564; 1915, was 49,689; 1916, was 44,810; 1917, was 46,437; 1918, was 47,610; 1919, was 51,496; 1920, was 46,144; 1921, was 39,639; 1922, was 37,947; 1923, was 42,860.

The Colchester Museum.

IS OPEN DAILY FROM

1st April to 30th September—10 a.m. till 5 p.m.

1st October to 31st March—10 a.m. till 4 p.m.

AND CLOSED ON

Sundays, Good Friday, and Christmas Day, and such other days as the Committee may order.

ADMISSION FREE.

It is urgently requested that any discovery of Archaeological interest in the neighbourhood may be brought to the notice of either the Chairman or the Curator as early as possible.

The Curator will be pleased to give any information in his power and may be seen daily, Museum engagements permitting.

Postcards of many of the most important antiquities and a new series showing the Castle from various points of view, may be obtained in the Museum at One Penny each.

Curator ... ARTHUR G. WRIGHT.

PLATE I.



Photo by the Curator.

See page 7, No. 4482-89, 23.

List of Additions to the Museum

BY GIFT AND PURCHASE.

From 1st April, 1923, to 31st March, 1924.

All the objects were found in Colchester unless otherwise stated.

STONE AND BRONZE AGES.

Portion of small Chisel or Axe of black flint, two Scrapers, two Flake Knives and Flake, found on Wolves' Farm, Tendring. Neolithic. Donor, Mr. Adam Chalmers. 4465-4501.23

Large Cinerary Urn (Abercomby type 4) of coarse light red ware with triangular groups of finger-tip impressions on side; contains burnt human bones. Partly restored. Lower portions of two other Urns of similar ware and a number of fragments of others with finger-tip impressions. All found together in a Late Bronze Age cemetery at Shalford, Essex. About 650-400 B.C. Donor, Mr. Sydney Hiscock. (Plate I.) 4486-89.23

Seven Urns in all are said to have been found and the various fragments seem to bear this out. A triangular sandstone rubber was found near the urns, and is included in the group.

Three fragments of a Vessel of hard light red ware, with vertical straps with finger impressions dividing groups of tooled wavy lines. One fragment sharply carinate with thumb impressions along periphery. Found on surface about a quarter of a mile from the Bronze Age Cemetery, Shalford. Probably Early Iron Age. Donor, Mr. Sydney Hiscock. 4489.24

For Urns showing strap work and carinated shoulders see Abercomby, "Bronze Age Pottery" Vol. II. plate lxxxvi. and for a similar carinated fragment, Cunningham, "Early Iron Age Inhabited Site" plate 49a, fig. 2.

Founder's Hoard of Bronze Implements, consisting of Two Palstaves, Two upper portions of ditto, Four socketed Axes, Four upper portions of ditto, One lower portion of ditto, One Gouge, socket slightly damaged. Found at Rayne, Essex, 1843. Late Bronze Age, about 1000-500 B.C. Donor, Mr. H. J. Cunningham. (*Plate II.*)

4524.23

The hoard is said to have originally consisted of eighteen pieces.

Polished Flint Axe, with ochreous patination. Length, 7ins. Found at Wethersfield, Essex. Neolithic, or Early Bronze Age. Donor, Mr. H. J. Cunningham.

4525.23

Flint Flake found at Feering. Neolithic. Donor, Mr. E. Keys.

4610.23

Five Fragments of Bronze or Iron Age Pottery found by donor at Dovercourt. Donor, Captain H. E. Laver.

4629.23

Small Rubber, or Hone, of Greenstone made from a piece of a polished axe. Found at Braintree. Donor, the Rev. William C. Hall.

4728.24

EARLY IRON AGE (LATE-CELTIC).

Thirty fragments of decorated and plain wares of characteristic Hallstatt types found at All Cannings Cross Farm, Wiltshire, during excavations carried out by Mr. and Mrs. B. Howard Cunningham in 1911. Donor, Mrs. B. H. Cunningham.

4453.23

For a full account of these excavations see M.E. Cunningham, "The Early Iron Age Inhabited Site at All Cannings Cross Farm, Wiltshire," 1923.

Portion of bronze Nave of Chariot Wheel of exterior octagonal form and three stout bronze Rivets or Nails, probably for fixing tire of wheel. Found at Shoebury, Essex. Donor, Captain H. E. Laver.

4560.23

Fragment of green Vitreous Paste, probably used in making beads, or enamelling, and a White Stone Bead. Found at Southchurch, Essex. Donor, Captain H. E. Laver.

4561-62.23

Eight fragments of Pottery, found on Lexden Park Estate. Purchased.

4562a.23

Iron Spear Head with slight mid-rib dividing hollow on either face, point wanting, socket contains portion of wood. Found in Thames, at Grays, Essex. Purchased.

4574.23

PLATE II.



Photo by the Curator.

See page 8, No. 4524.23

Fragments of Pottery and worked flint Core from same excavation at Asheldham, Essex, 1893. Donor, Dr. Philip G. Laver, F.S.A. 4688.24

Fragment of Pottery from St. Osyth. Donor, Captain H. E. Laver. 4699.24

Upper Stone of Quern, made from a boulder of Glauconitic Calcareous Sandstone with openings in sides for handles, the larger being a circular perforation through the side. Found at Coggeshall. Donor, the Rev. William C. Hall. 4751.24

The usual material in this district for querns is Hertfordshire Conglomerate ("Pudding Stone"); the above stone was kindly identified by Mr. W. Campbell Smith, M.C., M.A., of the Natural History Museum, South Kensington.

Fine bronze Penannular Ring of plano-convex section, beautifully patinated. Donor, Dr. Philip Laver, F.S.A. 4741.24

ROMANO-BRITISH PERIOD.

Burial Group, consisting of "Honey Pot" of buff ware containing burnt human bones; buff ware Flagon with saucer-shaped mouth and hollow Flue Tile in which the Flagon was placed for protection. 2nd Century, A.D. Donor, Dr. Philip G. Laver, F.S.A. 4439-41.23

Two base fragments of "Samian" Bowls, Fragment of Tile with footprint of dog, Bronze Pin with hemispherical head, Small Bronze Scalpel with loop for suspension, Small Bronze Toilet Tweezers and Bone Pin with ornamental head. Donor, Dr. Philip G. Laver, F.S.A. 4445-46, 4455-56, 4461-63.23

Fragment of Mortar rim with Potter's stamp, **REGALI**. Donor, Councillor Penry Rowland, M.D. 4428.23

Base fragment of "Samian" Cup (Form 33) with Potter's stamp, **LENTVLLI**. Base fragment of Plate (Form 18) with portion of Potter's stamp, **MVRA** retrograde. Three fragments of hard grey ware ornamented with cordons. Donor, Mr. M. R. Hull. 4457-59.23

Base and side fragment of "Samian" Cup (Form 33) with Potter's stamp, **MJACRINI.M**. Donor, Dr. Felix Oswald. 4460.23

Lower portion of "Incense Vase" of buff ware. 1st Century A.D. Donors, Masters C. G. and P. G. Godfrey. 4464.23

Rim fragment of "Samian" Bowl (Form 82), with fine glaze. Claudian-Vespasian period. Donor, Mr. M. R. Hull. 4466.23

Several bronze objects, more or less imperfect : Studs, Rings, Buckle, etc., three circular Tesserae and two Spinning Whorls, made from potsherds, Five fragments of Glass, One blue glass Bead and Eight pieces of coloured Wall Plaster, from various sites. Donor, Dr. Philip G. Laver, F.S.A. 4469-70.23

Large Olla or Cooking Pot of dark grey ware with trellis pattern on side, containing burnt human bones and Large Flagon of buff ware, smoked to a dark grey, with long straight neck and plate-shaped mouth, four ribbed handle and beaded foot with rising base; in the mouth was the stilt of an Amphora, used as a stopper. Vase of dark grey ware (Form 65) with small neck and mouth. Small Flagon of buff ware. Small flanged Bowl of dark grey ware, trellis pattern on side. Tall Jar with oblique rim, of dark grey ware. Bag-shaped Beaker of rough-cast Castor ware. Large number of fragments of Plain and Decorated "Samian" Ware. A number of ditto with Potters' Stamps and a large number of fragments of buff and grey wares, necks of Flagons, etc. Donor, Dr. Philip G. Laver, F.S.A. (*Plate III*). 4472-82.23

Several fragments of Roman Pottery found in a field at Sible Hedingham, 1923. Donor, Mr. A. J. Spurgeon. 4485.23

Remains of a small Urn of dull red ware with black exterior and Cover of grey ware. Flanged Bowl of "Samian" Ware with ribbed spout (Ritterling type 12 and Curle type 11), slightly imperfect, and Base fragment of "Samian" Cup (Form 33) with potter's stamp, **CARVSSA**. Donor, Dr. Philip G. Laver, F.S.A. 4490-93.23

Bone Pin with faceted head, Three Beads of blue glass, Small bronze harp-shaped Fibula with spiral spring, and a large number of fragments of Beakers, with barbotine, painted and rouletted decoration. Donor, Dr. Philip G. Laver, F.S.A. 4495-4500.23

PLATE III.

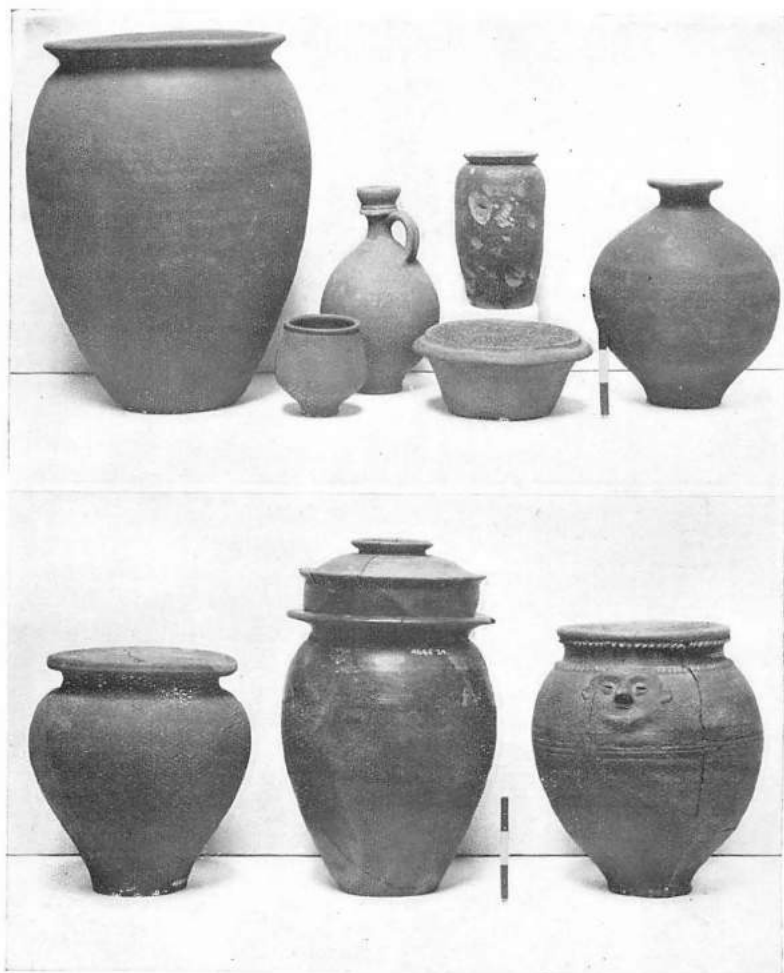


Photo by the Curator.

See pages 10, 13 and 16, Nos. 4472-82.23, 4595.23, 4695-96.24.

Four perforated Stone Beads found with an inhumation burial with bronze bracelets (8236.17). Donor, Dr. Philip G. Laver, F.S.A. 4503.23

Large "Samian" Plate (Form 18) with Potter's stamp, **OF PRIMI** (Primus was a potter of LaGraufesenque of the Claudian-Vespasian period), slightly restored. Bowl of "Samian" Ware (Form 31) with stamp of the potter, **BOLSIVS**. (C.I.L. XIII., 10010, 338). Donor, Dr. Philip G. Laver, F.S.A. 4505-06.23

Portion of overburnt Flanged Tile, kiln waste, found in donor's garden. Donor, Mr. A. W. Frost. 4515.23

Calvarium of Skull and Ulna of Roman period from site of Roman Cemetery, Denmark Street. Donor, Dr. Philip G. Laver, F.S.A. 4516.23

Fragment of Roman pottery and portion of Tile with impression of animal's foot. Donor, Mr. W. J. Shepherd. 4518.23

Portion of rim of large Store Vessel with polished black exterior and several fragments of two small Pots of Belgic grey ware. Found at Brightlingsea. Donor, Mr. B. J. V. Bilney. 4530.23

Fragments of a buff ware Flagon, with moulded human busts, modelled from a bronze ewer. Buff ware mould for handle of pottery saucepan, also modelled from a bronze type. (*Plate IV.*), two necks and mouths of red ware Flagons. Portion of a disc of buff ware with ring and dot ornament, and a Bead of vitreous paste. Donor, Dr. Philip G. Laver, F.S.A. 4531-36.23

Base of "Samian" Cup (Form 27) with stamp **VERECV**. Found in donor's garden. Donor, Mr. A. W. Frost. 4537.23

Verecundus was a Lezoux potter of the Vespasian period;

Portion of Amphora handle and Oyster Shells, from a Roman rubbish pit in Queen Street. Donor, Mr. H. C. Clarke. 4538.23

Wide-mouthed Urn of dark grey ware with tooled girth grooves, chevron pattern and cordon, containing burnt human bones and remains of a Platter of coarse brown ware. Found together at Braintree. About 50 A.D. Donor, Councillor George Hunnab. (*Plate IV.*) 4543-44.23

Fragments of two large Pots and other vessels found on same site as the preceding. Donor, Councillor George Hunnab. 4545.23

Base fragment of "Samian" Cup (Form 38) with part of potter's stamp, **VITLM** (possibly **AVITVS**). Circular Bone Counter with concentric grooves, and fragment of decorated "Samian" Bowl (Form 37). Donor, Mr. W. J. Shepherd. 4546-47, 4550.23

Neck and fragments of a buff ware Flagon found some years back at South Hornchurch, Essex. Late 1st Century, A.D. Donor, Mrs. Jessie Hearn. 4548.23

Handle of Vessel of grey ware, showing method of attachment and fragments of various wares. Donor, Dr. Philip G. Laver, F.S.A. (*Plate IV.*) 4553-58.23

Four Beads of vitreous paste. Purchased. 4559.23

Large bronze Needle pointed at each end, with rectangular eye, 10 7-8th inches long. Purchased. 4575.23

Bronze Finger Ring with flat oval engraved bezel, subject illegible. 2nd Century, A.D. Purchased. 4577.23

Bronze Finger Ring with square bezel engraved with annulet and pellet. 4th Century, A.D. Purchased. 4578.23

silver Finger Ring with angular shoulders and oval box-form bezel set with an engraved stone, representing a male figure with *pedum* or throwing stick in left hand and quarry in right. 4th Century, A.D. Purchased 4579.23

PLATE IV.

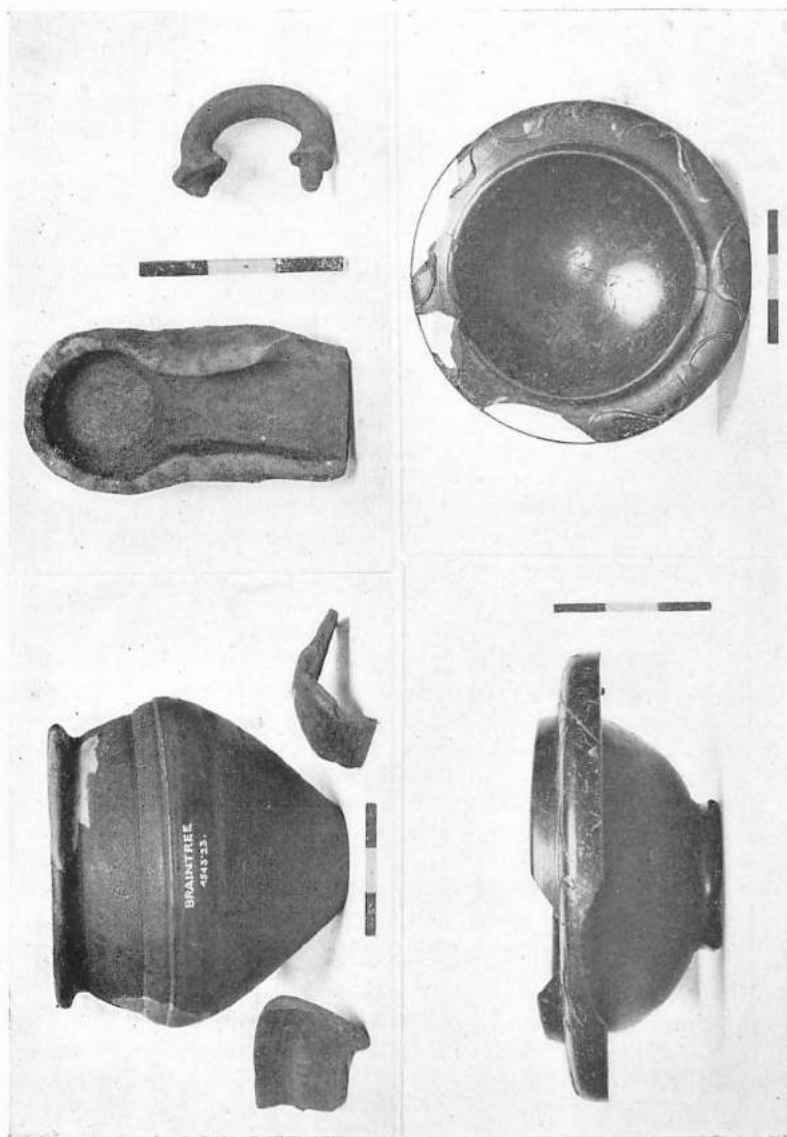


Photo by the Curator.

See page: 11, 12 and 13, Nos. 4532.23, 4543-44.23, 4553.23 and 4564.23.

Fragment of rim of Mortar with drilled hole for purpose of repair. Donor, Dr. Philip G. Laver, F.S.A. 4580.23

Fragments and Neck of a large Flagon of fine thin white ware with four grooved handle and straight sided upright rim. (Loeschcke, Haltern V, type 45). Fragments of a Barrel-shaped Beaker of thin pale buff or stone-colour ware, with rouletted bands round body. Fragments of Belgic terra-nigra Platter with incurved sides and flat foot ring ; maker's stamp in centre **VAB**. Fragments of two similar Platters and of a small Cup of the same ware, and a number of fragments of various wares. About 50-80 A.D. Donor, Mr. M. R. Hull. 4581-86.23

Flue Tile of unusual size with flanged ends. Quadrant Tile and fragments of Tiles, Pottery, piece of Mortar and Oyster Shells. From West Mersea. Donor, Mr. J. Ashton Turner. 4588-89.23

Cinerary Urn of light grey ware, containing burnt human bones. 2nd Century, A.D. Donor, Dr. Philip G. Laver, F.S.A. 4591.23

Sandstone Rubber found in rubble of Roman Wall at West Mersea. Donor, Captain H. E. Laver. 4593.23

Flanged Bowl of "Samian" ware, with *barbotine* leaf ornament on flange, slightly restored. Found on site of Company's new building in Stanwell Street. Trajan-Hadrian period. Donors, The Colchester Manufacturing Company, Ltd. (Plate IV). 4594.23

This bowl is a variant of Curle's type II.. See Oswald and Price, "Terra-Sigillata," plate lxxi. fig. 19, also May, "York Pottery," plate ix. fig. 10.

Olla of dark grey ware with human mask beneath indented neck (Plate III.), and a large number of fragments of Roman and Medieval wares found in same rubbish pit as the "Samian" Bowl. Donors, The Colchester Manufacturing Company, Ltd. 4595-96.23

A fine Burial Group, consisting of a beautiful Glass Bowl of green colour with wide curved and beaded rim containing the burnt bones of a child of twelve months of age, with Leaden Lid with broad curved flange, the sunk centre hammered to fit mouth of bowl; the upper side of flange shows traces of fine linen in which the burial was wrapped. Lamp of red ware, pear-shaped without handle, but with three small knobs on face, copied from a bronze lamp similar to that figured in B.M. Guide to Roman Antiquities, page 46, fig. 49. On the base is the potter's stamp, **IEGIDI** (C.I.L. XIII. 10001, 161). Large Flue Tile of unusual dimensions, $11\frac{1}{4} \times 11 \times 10\frac{1}{2}$ ins. In this the burial had been placed, the lamp being between two flat tiles on the top and the whole bricked in. Found at West Mersea. About 80-100, A.D. Donor, Mr. Norman H. Bacon. (Plate V.) 4605-08.23

Wide mouthed Olla of tile-red ware with grey brown exterior; in the earth it contained were the remains of two iron nails. Base of Belgic grey ware Urn in which were found some pieces of burnt human bones and a "First Brass" coin of Hadrian with light green patina, *rev.* **IVSTITIA AVG.** **SC** in field, **COS III** in exergue; and fragments of a buff ware Amphora. Probably a burial group, as all were found together in donors' clay pit at Brickworks. Mid 2nd Century, A.D. Donors, Messrs. H. Everett and Son. 4614-16.23

Piece of Purbeck Marble Moulding; piece of moulded red cement and large piece of red cement probably from a floor. Donor, Dr. Philip G. Laver, F.S.A. 4617-19.23

Fragments of various wares found on donor's garden site in Lexden Park. Donor, the Borough Surveyor (Mr. Harold Collins). 4620.23

Large buff ware Flagon with long straight neck, plain rim mouth, three grooved handle and hollowed base. Found in donor's garden. About 40-50 A.D. Restored. Donor, Mr. A. W. Frost. (Plate VI.) 4622.23

See Ritterling, "Hofheim," type 50, and Curle, "Newstead" page 254 plate xlix. b 234.

PLATE V.

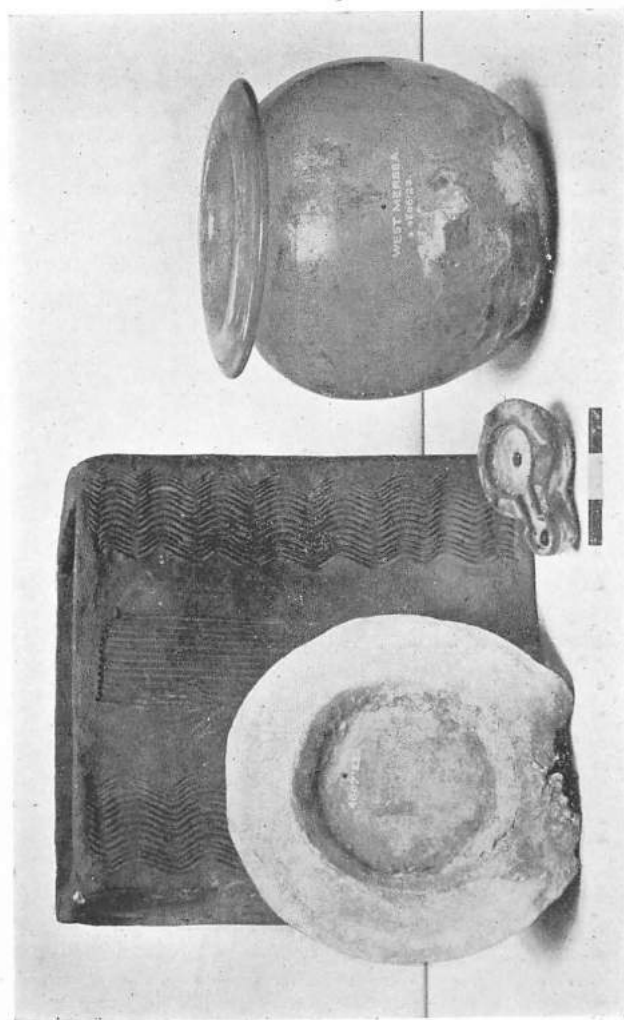


Photo by the Curator.

See page 14, Nos. 405-08, 23.

Four rim fragments of Mortars, two of which bear stamps, **ALBINVS** and **GAIVSF**, fragments of a large Face Urn of red ware with buff slip exterior and fragments of Mica-coated and "Samian" wares, with potters' stamps **OF SEVER** and **OF FEL**. Small glass Perfume Bottle and bone Spoon, both imperfect. Donor, Dr. Philip G. Laver, F.S.A. 4630-37.2

Base of Amphora or large Jar, portion of handle of Glass Flask, portion of base of square Glass Bottle moulded with circle and triangles, Base of small Beaker, Iron Buckle, Iron hook-like object, Crystal Pebble showing traces of rubbing. Found in donor's clay pit at Brickworks. Donors, Messrs. H. Everett and Son. 4639-4646.28

Moulded block of Stone found on site of 113, High Street. Donor, Mr. W. Paull. 4638.28

Fragment of flanged Roof Tile of yellow clay. Donor, Councillor A. M. Jarmin, F.R.Hist.S. 4647.28

Several fragments of Roman wares found in donor's garden. Donor, Mr. A. W. Frost. 4649.28

A number of fragments of Roman wares, including "Samian" with potters' stamps, from site of 113, High Street. Donor, Mr. W. Paull. 4651.24

Large base fragment of "Samian" Bowl (Form 17) with potter's stamp **MARSVS. FECI**. and fragments of forms 18 and 27 with fine glaze. Donor, Councillor A. M. Jarmin, F.R.Hist.S. 4652.24

A number of fragments of "Samian" ware, plain and decorated with several potters' stamps. Purchased. 4656-63.24

Antler of Roe Deer from Roman level. Donor, the Rev. William C. Hall. 4667.24

Several fragments of "Samian" and other wares. Donor, Dr. Philip G. Laver, F.S.A. 4668-73.24

Fragment of straight-sided Cup of red ware, with lustrous metallic glaze. Found in donor's garden on North Hill. Donor, Mr. Harrington Lazell. 4674.24

Base fragment of "Samian" Cup (Form 33), with potter's stamp, **IVSTI MA**. Donor, Master E. J. Rudsdale. 4676.24
Justus was a Lezoux potter of the Hadrian-Antonine period.

Small bronze Figure, feet wanting, wearing *mascles* or a kind of body belt like that worn by charioteers, and a peaked cap, probably derived from the Phrygian. Height, 2½ ins. Found in donor's garden. Donor, Mr. A. W. Frost.

4677.24

Mr. Reginald Smith, F.S.A., of the British Museum, to whom I submitted it, writes that the figure "does not seem to be in Reinach's Repertoire of Sculpture and the Greek and Roman Department (B.M.) cannot give it a name."

Cinerary Urn of thin grey ware containing charcoal, Circular tessera of grey ware and two coins, a "Second Brass" of Vespasian, *rev.* **PAX AVG. S.C.** and a "Second Brass" of Trajan, much corroded, found near the urn. Donors, Messrs. H. Everett and Son.

4683-86.24

Olla or Cooking Pot of burnished black ware with matt zone and tooled trellis pattern, and bold everted rim. Large portion of Flanged Bowl of grey ware with red exterior. Found together. About 250-280 A.D., and Base of Bowl of mica-coated ware with hollow raised knob in centre. Donor, Mr. Harrington Lazell. (*Plate III.*)

4695-96, 4710.24

A number of fragments of Wares from the site of a Roman Kiln in Churchyard Field, Greenstead, near Halstead. Donor, the Rev. T. H. Curling, M.A.

4700.24

Piece of painted Wall Plaster. Rim fragment of buff ware Mortar with strap and buckle ornament. (*Plate VI.*) Ditto of pale buff ware with rectangular stamp and raised boss. (*Plate VI.*) Large portion of shallow Mortar with narrow rim, of red ware with brown exterior. Portion of shallow Bowl with horizontal flutings. Base of "Samian" Cup (Form 33) with stamp **FIRMVS FE**; ditto with stamp **MICCIO F.** Portion of broad flat Bronze Bangle and small Bronze Fibula. Donor, Dr. Philip G. Laver, F.S.A.

4689, 4701-09.24

For examples of decorated Mortaria, see Heywood Sumner "*Roman Pottery at Ashley Rails*," pages 30-33, plates x., x.a.

Small carinated Bowl or Beaker of reddish brown ware with dark exterior. 1st Century, A.D. Found at Braintree. Donor, Mr. Alfred Hills, M.A. (*Plate VI.*)

4712.24

Small bronze Bell with iron loop for tongue, which is wanting. About 2nd Century, A.D. Donor, Dr. Penry Rowland.

4713.24

PLATE VI.

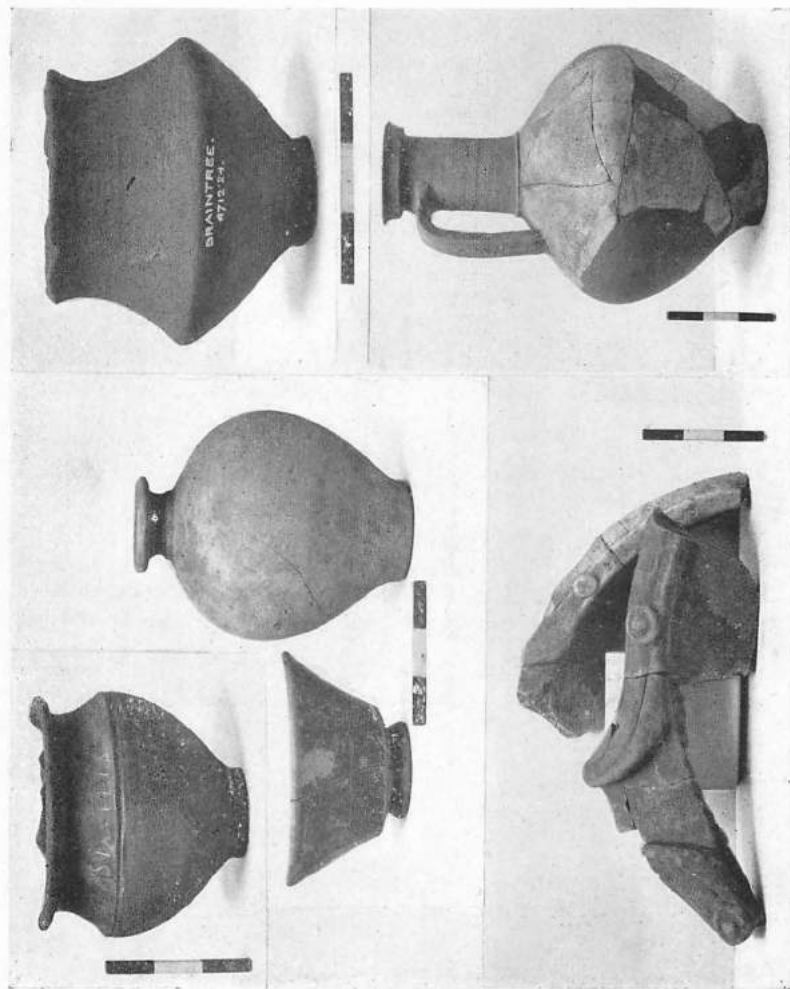


Photo by the Curator.

See pages 14, 16 and 17. Nos. 4622, 23, 4701-02, 24, 4712, 24, 4735-36, 24 and 4743, 24.

Quadrant Tile of hard red ware, cut from a larger tile. Probably 1st Century, A.D. Donor, Mr. Duncan W. Clark, A.R.I.B.A.
4729.24

A number of fragments of Painted Wall Plaster and various Marbles found on site of a Roman house on North Hill.
4734.24

Narrow-necked Vase of grey ware. Portion of "Samian" Cup (Form 33) with stamp **SABINIC**. (Plate VI.) Rim portion of "Samian" Bowl (*var.* Form 36) with leaves *en barbotine*; and fragments of a Lagna and Flagon. Donors, Messrs. H. Everett and Son.
4735-39.24

A number of fragments of various wares, including three pieces with unusual decoration. Wide-mouthed Olla of grey ware with grooved carinated bulge, on the shoulder is scratched the name **SIMILIS** and on base a +. About end of 1st Century, A.D. Donor, Dr. Phillip G. Laver, F.S.A. (Plate VI.)
4740, 4743.24

Mosaic Pavement from room of a Roman House, the decorated panel of white and coloured tesserae is 10 feet square, and is surrounded by a border of larger red tesserae. The design consists of a central circular medallion within a *guilloche* or cable pattern border, on either side of which are rectangular panels with marine monsters chasing dolphins, small square panels with flower ornament at each corner; all the panels surrounded by a cable border. Two corner panels and part of one rectangular panel destroyed. Found in Beryfield, in the garden in the occupation of Mr. W. C. Lewis, March, 1923. Donor, Mr. Douglass G. Round.
4753.24

The following antiquities were found during excavations for the foundations of the new wing of the Essex County Hospital, Bexden Road, in 1923 and 1924.

Small Household Altar of travertine with moulded top and focus. The base appears to be wanting, or in its present form it was fixed to the edge of a shrine. (*Frontispiece*.)
4754.24

Tall Vase or Beaker of "Samian" ware from the Rheinzabern potteries, ornamented in *barbotine* with Hound and Hind amid scrollwork. Imperfect. (Plate VII.)
4755.24

For illustrations and account of this class of ware see Oswald and Price, "Terra-Sigillata," plate lxxx., page 228.

- Small bag-shaped Beaker of Castor ware with decoration of Hound and Hind, *en barbotine*. (Plate VII.) 4756.24
- Small Mortar of grey-buff ware with heavy overhanging rim with potter's stamp **VODF** in large letters, the base worn to a hole and plugged with lead. (Plate VII.) 4757.24
- Small Unguent Vase of pinkish ware with pointed base. Ditto of buff ware with flat base and corrugated sides. (Plate VII.) 4758-59.24
- Small wide mouthed Jar of dark grey ware with cordon at base of neck. (Plate VII.) 4760.24
- Pear-shaped Flask of fine light grey Belgic ware, the narrow tapering neck terminating in a funnel-shaped mouth. (Plate VII.) 4761.24
- Three small Ollæ or Cooking Pots of dark grey ware with everted rims and tooled trellis and vertical line decoration on sides, more or less perfect. 4762-64.24
- Half of a large "Samian" Plate (Form 18/31), with potter's stamp **DAGOMA** within tooled and rouletted circles. Dagomarus was a Lezoux potter of the Vespasian-Domitian period. 4765-24
- Plate of "Samian" ware (Form 18), glaze destroyed and stamp illegible, part of rim wanting. 4766.24
- Rim fragment of Mortar with stamp **MORICAL** in large letters on one side of spout and **[FE]CIT** on the other. 4767.24
- Rim fragment of Mortar with stamp **APRILIS**; ditto with stamp **CRICIROF**; ditto with "palm-leaf" stamp. 4768 70.24
- Handle of Amphora stamped **G.S.P.** 4771.24
- Portion of Amphora mouth, on which is scratched **VII.** 4772.24
- Base of colour-coated Beaker round which is scratched owner's name. 4773.24
- Two fragments of Castor-ware with man and leopards *en barbotine*. (Plate VII.) 4774.24
- A large number of fragments of Decorated "Samian" ware. 4775.24

PLATE VII.



Photo by the Curator.

See pages 17 and 18, Nos. 4755-61, 4774, 24.

- A large number of fragments of Plain "Samian" ware,
including rim portion of large mortar with lion-head spout.
4776-77.24
- A number of fragments of "Samian" ware with potters' stamps.
4778.24
- Iron hanging Lamp Stand. 4779.24
- Bronze Stud with large circular head. 4780.24
- Bronze Segmented Ring with portion of attachment on one
side, probably a buckle. 4781.24
- Bone Pin and Tessera. 4782-83.24
- Fragment of Glass Cup. 4784.24

Donors, The Committee of the Essex County Hospital.

MEDIEVAL AND LATER PERIODS.

- Tea Caddy of light wood inlaid on edges, the lid and sides
ornamented with scrolls and bosses of curled biscuit-
coloured paper. Another of hexagonal form in dark wood
with designs in curled gilt and coloured papers with printed
satin medallion on front panel. Donor, Mrs. Walter
Grimston. (*Plate VIII.*) 4443-44.23
- Remains of an Oak Window, with portions of beams removed
from donor's premises in High Street during alterations.
15th Century. Donor, Mr. A. E. Joscelyne. 4483.23
- Chemist's Leech Aquarium of glazed stoneware with iron
clamped lid, inscribed on side: "B.C./Patent/Improved
Leech Conservatory/Inventor /C. F. Buckle/Chemist/Peter-
borough/S. Green/Manufacturer by Appointment/Lambeth,
London." Donor, Mr. Arthur Weddell. 4494-23
- Bronze Stirrup, showing traces of silver plating, strap bar and
foot plate ornamented with perforated circles and quatre-
foils. 15th Century. Donor, Dr. Philip G. Laver, F.S.A.
4508.23
- Mess Jacket and Waistcoat of a Major-General, obsolete since
1889, and a small pin-fire Revolver of a period about
1850. Donor, Major-General F. Ventriss. 4511-12.23

- Card Game, consisting of twenty cards with figures of Bridegroom, Bride, Priest, etc., and twenty-five Pool cards with coloured bone counters. Early 19th Century. Donor, Councillor Penry Rowland, M.D. 4517.23
- Pair of Steel Snuffers with spring cutter. 18th Century. Donor, Mr. A. E. Partridge. 4520.23
- Three leaden Lace Bobbins purchased by donor at Dedham. Probably 18th Century. Donor, Mr. V. B. Crowther-Beynon, F.S.A. 4522.23
- Lady's Spur, used when trousers were worn. Early 19th Century. Pudding Maid, used for supporting the pudding bag when pouring in the batter. About 1850. Donor, Mr. C. Brown. 4529-4539.23
- Small bronze Spoon with spirally twisted handle, on back of bowl is engraved a church, one spire of which is unfinished, probably Cologne Cathedral. Found at West Mersea. About 17th Century. Donor, Mr. J. Ashton Turner. 4542.23
- Small Iron Bell, probably a sheep bell, found in donor's garden. Date uncertain. Donor, Mr. Smith. 4550.23
- Bristol Delft Possett Pot, slightly restored, with decoration in blue. About 1740. Purchased. 4563.23
- Candle Box of japanned iron. Box Iron with turned wood handle. Carved bone figure of Christ from a crucifix, from an excavation in Colchester. Bronze Bodkin with perforated trefoil in head. Iron Shears with brass spring bow. Iron Shears with cut out ornament at base of blades. Iron Augur for centre-bit, found in river. Iron Spokeshave, made from blade of an early dagger, found in river. Iron Wedge, found in river. Iron barbed Arrowhead with hollow socket. About 14th Century. Purchased. 4564-73.23
- Bronze Finger Ring with octagonal periphery, engraved **IVDICIO.TE.AMO.DOMINA.** About 15th Century. Purchased. 4576.23
- Pair of Lady's Silk Slippers with trade label of "J. Boag/from Sly's, Regent Street, London/Ladies and Gentlemen's/Boot and Shoe Maker/8 Crouch Street/Colchester." Early 19th Century. Donor, Mrs. Adelaide Cater. 4587.23

PLATE VIII.

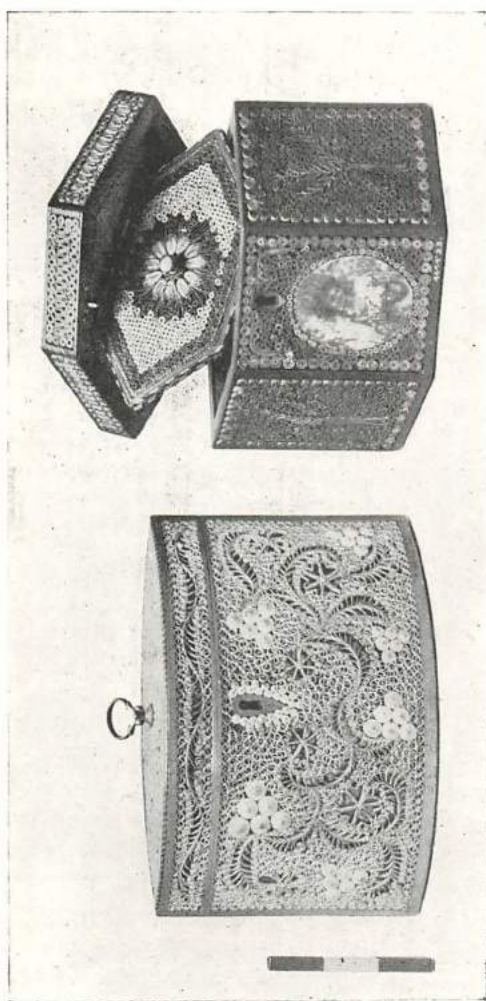


Photo by the Curator.

See page 19, Nos. 443-41, 23.

- Silk Bodice with "leg of mutton" sleeves, about 1860. Donor, Miss S. Boon. 4592.23
- Bronze Spherical Bell or Grelot. 17th Century. Donors, the Colchester Manufacturing Company, Ltd. 4597.23
- Nine worked Stones part of the original South Doorway of Layer Breton Church, which was demolished in 1914. Norman period. Donor, Dr. Philip G. Laver, F.S.A. 4601.23
- Shell Cameo with bust of man. Date uncertain. Found at Feering. Donor, Mr. E. Keys. 4611.23
- Money Changer's Scales and Weights in Oval Japanned Case. 18th Century. Brass Balance to weigh and gauge sovereigns and half-sovereigns. Donor, Mr. C. R. Finch. 4612-13.23
- For an exhaustive catalogue and account of Apothecaries and Money Changers' Scales, see Sheppard and Musham, in Spink's "Numismatic Circular."
- Fragment of Green-glazed Ware, with incised decoration. Probably 15th Century. Donor, Mr. A. W. Frost. 4621.23
- Small bronze Pendant, like a six petalled flower, in the centre of which is an Eagle. The limb of the pendant is hinged. Found on site of 113, High Street. 14th Century. Donor, Mr. W. Paull. 4648.32
- Small Italian (Tally) Iron, with circular embossed stand. Small brass Ring originally gilded, with foliaceous scroll design in relief. Probably 18th century. Donor, Mr. S. Meadon. 4650.24
- Large broad Handle with portion of rim and base of a Jug, or Gotch of hard dark grey ware. 14th Century. Donor, Councillor A. M. Jarmin, F.R.Hist.S. 4653.24
- Square Flower Pot of hard buff coloured ware with frilled edge, on sides are views of Hedingham Castle and rose-like flowers in darker buff relief. A smaller and similar pot, with plain sides. Made by Bingham at his pottery at Castle Hedingham. 4654-55.24
- Small folding steel Watch Key. 18th Century. Donor, Mr. S. Jacobs. 4690.20

Carved figure of a Lion *couchant* in Purbeck Marble, which had formed the base of a small column of quatre-foil section, a portion of which remains on the back of the animal. From a double doorway of some ecclesiastical building. 13th Century. Carved Bust of a cowed monk with hands raised in prayer, probably the corbel of a hood moulding for door or window. Probably 14th Century. Glass Medallion from wine bottle with coat of arms in relief. 17th or 18th Century. Donor, Councillor A. M. Jarmin, F.R.Hist.S. 4692-94.24

Two glass Phials, with thick rounded bases. About 1750. Octagonal Wine or Spirit Bottle of greenglass with medallion on side inscribed in relief, T. Shory, 1739. All found in donor's garden on North Hill. Donor, Mr. Harrington Lazell. 4697-98, 4711.24

Mug or Cannette of glazed white stoneware with handle, made at Siegburg, near Bonn, the sides decorated in relief. Small Flower Vase of White Lambeth Delft, foot restored. Small Drug Pot of ditto. Jar of ditto with blue and purple decoration. Small Mug with dark brown glaze, probably made at Stock, Essex, partly restored. Large Plate of Green-glazed Ware. Shallow Pipkin with single horizontal handle, with olive glazed interior. All found together in a small rubbish pit. 17th Century. (Plate IX.) 4716-20, 4730-31.24

Base of Fumigator of coarse glazed red ware. Fragments of Plates or Dishes or Yellow-glazed ware. Three-legged Pipkin of glazed red ware, imperfect. 17th Century. 4721-22, 4732-33.24

Large steel Sugar Nippers, mounted on brass pillar with oak stand. Early 19th Century. Anonymous. 4747.24

Large iron Key with S-shaped wards and ornamented reniform bow. 18th Century. Donor, Master George Blacklock. 4748-24

Small iron Key with piped stem and S-shaped ward and oval bow. Found in donor's garden. Donor, Mr. S. Meadon. 4749.24

Portion of a thick Brick of dark red friable ware, tapering on one face and end, with deeply incised lines on each face, probably a voussoir for arch. Found at Coggeshall. Date uncertain. Donor, the Rev. William C. Hall. 4752.24

A collection of Thirty-one Pothooks of iron of various dates from neighbouring localities. Purchased. (Omitted from last year's Report.) 4436a.23

Oak Beam carved with vine leaves and grapes and date 1635, from the "Marlborough Head," Dedham, discovered and removed during the restoration of the house in 1922. Length, 8 feet. Donors, The Colchester Brewing Co., Ltd. 4753.24

COINS, TOKENS, MEDALS.

Plated Denarius of Severus. *Rev.* **TRP XVII COS IIII.** Silver Denarius of Geta. *Rev.* **PRINC IV[VENT.]** "Second Brass of Gallienus. *Rev.* **LAETITIA AVG.** *Ex.* **M L.,** and Trade Token of Thomas Renolds, Bay Maker in Colchester. 17th Century. Donors, Mr. and Mrs. J. Rudkin. 4437.23

Plated Denarius of Probus. *Rev.* **MARS VICTOR.** Purchased. 4442.23

Copperas Token of Walton. *Obv.* **I.K** $\frac{1}{3}\frac{1}{6}$. *Rev.* **WALTON** $\frac{1}{3}\frac{1}{6}$. Donor, Mr. Miller Christy, F.L.S. 4467.23

These Halfpenny Tokens were used for paying copperas gatherers at Walton. See Victoria County History of Essex, Vol. II., pages 411-412.

"Second Brass" of Faustina. *Obv.* **DIVA FAVSTINA.** *Rev.* illegible. Donor, Mr. George Roper. 4502.23

Five "Small Brass" coins of Tetricus, Gratian and Constantine family. Purchased. 4504.23

Bronze Medal of the "Exhibition of the Works of Industry of all Nations." **MDCCCLI.** Donor, Mr. H. C. Keys. 4509.23

Denarius of Vespasian. *Rev.* **ANNOA AVG.** Donor, Mr. F. Denton. 4514.23

"Third Brass" of Constantine I. *Rev.* **BEATA TRANQVILITAS. VOTIS XX.** *Ex.* **STR.** Donor, Mr. E. Wilton. 4519.23

Three Trade Tokens of Sanders, Bedwell and Sale, all of Colchester. 19th Century. Donor, Mr. F. Farman. 4541.23

"Second Brass" of Nerva. *Rev.* illegible. Donor, Mr. H. E. Offord. 4551.23

- Shilling of Edward VI., in fine state. (Hawkins, p. 294, *Plate XXXIII.*, fig. 422). Found in the Thames with others.
Donor, Mr. Sydney Davis. 4552.23
- "Second Brass" of Aurelian. *Rev.* **RESTITVTORIENTIS.**
Donors, the Colchester Manufacturing Company. 4598.23
- "Second Brass" of Vespasian. *Rev.* An Eagle, the legend illegible. "First Brass" of Hadrian. *Rev.* Facade of Temple or Amphitheatre, the legend illegible. Donor,
Dr. Edward Chichester. 4603.23
- "Third Brass" of Claudius II. *Obv.* **DIVO CLAUDIO.** *Rev.*
An Altar. Donor, Miss Godfrey. 4623.23
- "First Brass" of Aurelius. *Rev.* Figure of Victory, **S.C.**
Sixpence of Elizabeth, 1592. Half-Crown, James I.,
Scotch issue. Halfpenny of George II., 1743. Ditto,
George III., 1775. Ditto, milled edge. Farthing, George II.,
1739. All found at St. Osyth, about 1897. Donor, Mr.
W. G. Scragg. 4627.23
- "Third Brass" of Constans. *Rev.* **SPES REIPUBLICAE.**
Groat of Henry VI. Calais Mint. Walton Copperas
Token, 1736. Donor, Mr. A. W. Frost. 4664-66.24
- Fourpenny Bit of William III., 1836. Donor, Captain H. E.
Laver. 4678.24
- Counting Token, or Jetton. *Obv.* Crown and Legend, *rev.*
Quatrefoil ornament. About 15th Century. Irish Farthing
of James I. "Second Brass" of Faustina, Minimus,
with radiated head. Purchased. 4679-82.24
- Counting Token, or Jetton. Donor, the Chairman, Alderman
Gurney Benham, F.S.A. 4692.24
- "Second Brass" of Nero. *Rev.* An Altar, **S.C.** in field. *Ex.*
ARA PACIS. Donor, Dr. Philip G. Laver, F.S.A. 4701.24
- "First Brass" of Caligula with **ADLOCVTIO** reverse, legend
illegible. Donor, Mrs. T. W. Watts. 4725.24
- See "Roman Imperial Coinage," Mattingley and Sydenham. *Plate*
vii., 115*a.*
- Trade Token of Richard Wade, of Bocking, 1667. Ditto of
Joseph Bott, of Braintree. 17th Century. Found at
Fairsted, Essex. Donor, Mr. G. C. Ward. 4744-45.24
- "Third Brass," illegible, perforated for suspension in Roman
times. Donor, Dr. Philip G. Laver, F.S.A. 4742.24

**MANUSCRIPTS, PRINTS, MAPS, PHOTOGRAPHS,
LANTERN SLIDES AND PRINTED MATTER.**

- Four Photographs of Roman Pottery, Dice, etc., found at Ospringe, near Faversham, Kent, by the donor. Donor, Mr. W. Whiting. 4438.23
- Lantern Slide of Drawing of East Wall of Castle, showing supposed battlements, by K. C. Scarff, 1923. Donor, Councillor A. M. Jarmin, F.R.Hist.S. 4447.23
- Coloured Pen and Ink Drawing, mentioned above. Donor, Councillor A. M. Jarmin, F.R.Hist.S. 4449.23
- Photograph of Interior of Bastion of Roman Wall, excavated in 1923, showing junction of Medieval and Roman work. Donor, Dr. Philip G. Laver, F.S.A. 4450.23
- Photograph of High Street, before 1878, showing St. Runwald's Church. Donor, Mr. T. J. Ralling. 4454.23
- Seventy-seven Picture Postcards of Chartres; Les Eyzies (Dordogne) and Mas d'Azil (Pyrenees), and Cave Paintings, Implements, etc. Donor, Captain H. E. Laver. 4468.23
- Two Lantern Slides of Late-Celtic Pottery from Lexden and Great Wakering. Purchased. 4471.23
- Twelve Picture Postcards of Welsh Antiquities in the National Museum of Wales, Cardiff. Donor, Dr. R. E. Mortimer Wheeler, M.C., F.S.A. 4484.23
- Set of Five Photographs of the Roman Mosaic Pavements found on North Hill and in Beryfield, 1922-23. Donor, the Art Editor of "The Times." 4510.23
- Account Book of Small Farm at St. Osyth, kept from 1809-1832, 4to., parchment covers. Donor, Major-General F. Ventriss. 4513.23
- Three Picture Postcards of Roman Pavements and Monument at Cirencester. Donor, Mr. E. C. Sewell. 4512.23
- Map of N.E. Essex, showing position of Ancient Monuments, from Volume III. of the Royal Commission's Inventory. Donor, Mr. G. H. Duckworth, C.B., F.S.A. 4523.23
- Photograph of John Searles of Felstead, Barn Fan Maker, taken about 1872. He is carrying a "Fan." Donor, Mr. H. Mothersole. 4527.23

- Two Photographs of Pot Crane and Fountain, and Saucepan Stand. Donor, Mr. H. Mothersole. 4528.23
- Two Photographs of Iron Age and Roman Antiquities found on Ham Hill, Somerset. Donor, Dr. R. Hensleigh Walter, F.S.A. 4540.23
- Forty-four Picture Postcards of Arles and its Antiquities, principally Roman. Donor, Councillor A. M. Jarmin, F.R.Hist.S. 4590.23
- Trade Label of J. Taylor, / Cabinet Maker, Upholsterer, / Appraiser and Auctioneer, / No. 27, High Street, / Colchester / surrounded by draped Curtain upheld by an Eagle, furniture in foreground. Copperplate Engraving by Stead, S.C., 99, Strand, London. Donor, Mr. A. F. Jarmin. 4599.23
- Photograph of Bronze Knife Handle found by donor in the Roman Cemetery at Ospringe. Donor, Mr. W. Whiting. 4600.23
- Five Picture Postcards of Dolmen and Bronze Age Pottery in Guernsey. Donor, Captain H. E. Laver. 4607.23
- Photograph of Kent Eoliths in the Collection of Mr. de Barri Crawshay. Donor, Mr. R. V. E. de B. Crawshay. 4624.23
- Three Picture Postcards of Lyons Museum. Donor, Councillor A. M. Jarmin, F.R.Hist.S. 4628.23
- Lithograph Portrait of Rev. C. H. Spurgeon with facsimile autograph, in Maple frame. Donor, Mrs. Clarke. 4675.24
- Three Lantern Slides of Roman Gateway, Pompeii, Sarcophagus of St. Helena and Roman Pavement in Beryfield. Donor, Councillor A. M. Jarmin, F.R.Hist.S. 4687.24
- Emmanuel Bowen's Map of Essex, dissected and mounted on cloth in case. Donor, the Rev. William C. Hall. 4714.24
- Two Deeds found in Extension to the Marquis of Granby Inn in 1924, dated 1562 and 1577. Donors, Messrs. Truman, Hanbury and Buxton, Ltd. 4715.24
A full account of these Deeds has appeared in the "Essex County Standard," March 22nd, 1924.
- Indenture of Apprenticeship of a poor child of the Parish of Coggeshall, 1759, and a Certificate of Identity of William Shardroft and his wife, of Colchester, 1715. Donor, the Rev. William C. Hall. 4723, 4746.24

Set of British Museum (Natural History) Postcards, British Pleistocene Mammals. Ditto, Fossil Man. Purchased.
4726-27.24

A Number of Engravings, Prints, Postcards, etc., of Essex Views and Houses. Received in Exchange. 4750.24

DEPOSITED.

Butt end of Polished Flint Axe, ochreously stained. Found at Mersea. Late Neolithic. Deposited by Mr. French.
4452.23

Fragment of buff ware Bowl with loose circular handle, like the example in grey ware in Joslin Collection, No. 542. Deposited by Miss Irwin. 4507.23

For a similar example found at York, see "Roman York" by Gordon Home, plate facing page 102.

Two gold penannular Armlets and a portion of another. Found in South Essex about twenty years ago. Probably Middle Bronze Age, about 1400-1000 B.C. Deposited by Dr. Philip G. Laver, F.S.A. 4526.23

Iron Canon Ball and Danish Silver Coin. Found in Stanway. Deposited by the Rural District Council of Stanway.
4625-26.23

ADDITIONS TO MUSEUM LIBRARY,

From 1st April, 1923, to 31st March, 1924.

British Association List of Papers bearing upon the Geology, Botany and Prehistoric Archaeology of the British Isles, 1921. By T. Sheppard, M.Sc., etc. Donor, the Author.
L.241

The Vasculum, July and October, 1922. (Contains papers on "Samian" Ware by Donald Atkinson.) Purchased.
L.242,243

London County Council. Horniman Museum Handbook. From Stone to Steel. Second Edition, 1923. Donor, the Clerk to the Council. L.244

The Roman Fort at Balnildy. By S. N. Millar, M.A. Purchased. L.245

Suffolk. (Little Guides Series.) By William A. Dutt. Purchased. L.246

- The Romans in Cleveland. By Frank Elger. Purchased.
L.247
- Notions d'Archéologie préhistorique, belgo-romaine et franque.
Par le Baron de Loe. Donor, Captain H. E. Laver. L.250
- Catalogue Musée du Perigord. Collections Préhistoriques. Par
Maurice France. Donor, Captain H. E. Laver. L.251
- Oudheid Kundige Mededeelingen van het Ryks-Museum van
Oudheden te Leiden. Donor, Captain H. E. Laver. L.252
- Musées Royaux du Cinquantenaire. Section de la Belgique
Ancienne, par la Baron A. de Loe. Donor, Captain H. E.
Laver. L.253
- Les Eyzies et les Environs, par Peyrony. Donor, Captain
H. E. Laver. L.254
- L'Habitat Tardenoisien de Grottes de Remonchamps. Par
E. Rahir. Donor, Captain H. E. Laver. L.255
- Lagerie Basse. Les Fouilles de M. J.-A. LeBel. Par J.
Maury. Donor, Captain H. E. Laver. L.256
- Das Graberfeld von der Hamert bei Venlo, von Dr. J. H.
Holwerda. Purchased. L.257
- Nederland's Vroegste Geschiedenis in Beeld. Dr. J. H.
Holwerda. Purchased. L.258
- Nederland's Vroegste Beschaving. Dr. J. H. Holwerda Jre.
Purchased. L.259
- Die Nederland in der Vorgeschichte Europa's, von Dr. J. H.
Holwerda. Purchased. L.260
- The Colchester War Memorial Souvenir. Donors, The Castle
Purchase Committee. L.263
- Extraits du Bulletin de la Société Préhistorique Française.
Tome XVI., Nos. 8-9, 1919. Donor, Dr. A. Guébbard.
L.264
- Extrait du Bulletin de la Société Nationale des Antiquaires de
France. Séance du 3 Decembre, 1919. Donor, Dr. A.
Guébbard. L.265
- Bulletin Mensuel de la Société d'Etudes Scientifiques et
Archéologiques de Draguignan. Decembre, 1915, and
April, 1916. Donor, Dr. A. Guébbard. L.266, 267

- Société Préhistoriques Française Commission d'Etudes des
Enceintes préhistoriques, etc. Rapports LXX-LXXIV.,
1917-20. Donor, Dr. A. Guébbard. L.268
- Hull Museum Publications, Nos. 133 to 137. Donor, the
Curator, Mr. Thomas Sheppard, M.Sc., etc.
L.270-272, 319-320
- Guide to the Valetta Museum. By T. Zammit, C.M.G., M.D.,
Curator. Donor, Sergeant H. A. French, R.A.M.C. L.273
- The Art of Richard Wilson, R.A., in the National Museum of
Wales. By Isaac J. Williams. Donors, the Director of
the Museum and the Author. L.274
- Bulletin of the Rhode Island School of Design (Providence,
U.S.A.) Vols. X., XI., and XII., part 1. Donor, the
Director, Mr. Roe. L.276, 318
- City of Nottingham. Illustrated Guide to the Art Museum,
1923. Donor, the Director and Curator. L.277
- The Beginnings of Botany. Some Notes on the Greek and
Roman Herbalists. By R. C. Bosanquet, M.A. (Reprint.)
Donor, the Author. L.280
- A Newly Discovered Centurial Stone at Housesteads. By
R. C. Bosanquet, F.S.A. (Reprint.) Donor, the Author.
L.281
- A New Roman Inscription from Hexham. By Professor R. C.
Bosanquet, M.A., F.S.A. (Reprint.) Donor, the Author.
L.282
- Cruciform Fonts in the Aegean Area. By R. M. Dawkins.
(Reprint.) Donor, Professor R. C. Bosanquet, F.S.A.
L.283
- The Excavations at the Kamares Cave in Crete. By R. M.
Dawkins and M. L. W. Laistner. Donor, Professor R. C.
Bosanquet, F.S.A. L.284
- National Museum of Science and Art, Dublin. Catalogue of
Irish Gold Ornaments. By E. C. R. Armstrong, F.S.A.
Donor, the Acting Director of the Museum. L.285
- Carnac. Fouilles faites dans le Region. Par Zacharie le
Rouzic et M. et Mme. Saint-Just Péquart. Donor, M.
le Saint-Just Péquart. L.286
- Paper read at the Annual General Meeting of the Essex Arch-
aeological Society, 26th April, 1923, by Dr. Philip G.
Laver, F.S.A. (Reprint.) Donor, the Author. L.287

- The Dagenham Idol. By Arthur G. Wright. (Reprint.)
Donor, the Author. L.288
- Essex Bronze Implements and Weapons in the Colchester
Museum. By Charles H. Butcher. (Reprint.) Donor,
the Author. L.289
- Belfast Museum Publication, No. 1. Donor, the Curator, Mr.
Arthur Deane. L.291
- Two Newly Discovered Brasses at Wormingford. By Miller
Christy, F.L.S., Rev. G. Montagu Benton, F.S.A., and
H. W. Porteous. (Reprint.) Donor, Mr. Miller Christy,
F.L.S. L.293
- The Segontium Excavations, 1922. By R. E. M. Wheeler,
M.C., D.Lit., F.S.A. (Reprint.) Donor, the Author.
L.294
- The Barrows on Ibsley Common. By Heywood Sumner, F.S.A.
(Reprint.) Donor, the Author. L.295
- Essex Naturalist, Vol. XX., parts 4 and 5. Donors, Council
of the Essex Field Club. L.296, 330
- The Romanization of Roman Britain. By F. Haverfield.
Fourth Edition revised by George Macdonald, 1923.
Purchased. L.299
- Archaeologia. Vol. LXXII. Purchased. L.300
- Guide to the Vatican Museum of Sculpture, Rome. Donor
Councillor A. M. Jarmin, F.R.Hist.S. L.301
- Old English Pottery. Illustrated Sale Catalogue by Puttick
and Simpson. October 12, 1923. Donor, Captain H. E.
Laver. L.302
- Journal of Roman Studies, Vol. XI. part 2, 1921, and Vol. XII.
part 1, 1922. By Subscription. L.303.326
- British Museum. Guide to English Pottery and Porcelain.
Third Edition, 1923. Purchased. L.304
- A Lost Caesarea. By Professor J. B. Bury, M.A. (Reprint.)
Donor, the Author. L.306
- National Museum of Wales. Short Guide to the Collections.
Donor, the Director, Dr. W. E. Hoyle, M.A. L.309
- A Roman Cemetery discovered at Ospringe in 1920. By W.
Whiting. (Reprint.) Donor, the Author. L.311

- Roman Britain. By R. G. Collingwood, F.S.A. 1923. Purchased. L.312
- Natural History. Journal of the American Museum of Natural History, New York. Vol. XXIII. Donors, the Trustees of the Museum. L.314
- Dene Holes and Chalk Mines. By the Rev. J. W. Hayes. (Reprint.) Donor, the Author. L.315
- The Antiquaries' Journal. Vol. III., 1923. By Subscription. L.316
- Proceedings of the Prehistoric Society of East Anglia. Vol. IV., part 1. By Subscription. L.317
- The Silver Cauldron of Gundestrup, Jutland, Denmark. By Lieut.-Colonel G. R. B. Spain, C.M.G. (Reprint.) Donor, the Author. L.323
- The St. Paul's Catacombs and other Rock Cut Tombs in Malta. By Professor T. Zammit. Donor, Sergeant H. A. French, R.A.M.C. L.324
- Malta. Annual Report Museum Department, 1921-1922. Donor, Sergeant H. A. French, R.A.M.C. L.325
- The Roman Imperial Coinage. By Harold Mattingley, M.A., and Edward A. Sydenham, M.A. Vol. I. Augustus to Vitellius. Purchased. L.327
- The Bronze Coinage of the Late Roman Empire. By Hugh Goodacre, F.R.N.S. (Reprint.) Purchased. L.331
- A Tumulus at Garthbeibis, Montgomeryshire. By R. E. M. Wheeler, D.Lit., F.S.A. (Reprint.) Donor, the Author. L.332
- A Roman Site in Pembrokeshire. By R. E. M. Wheeler, D.Lit., F.S.A. (Reprint.) Donor, the Author. L.333
- Essex Bronze Implements and Weapons in the Colchester Museum. Reprinted with Additions. By Charles H. Butcher. (Museum Publication No. 1). L.334
- London County Council. Horniman Museum Handbook. Evolution of Domestic Arts. Part 2. Second Edition, 1924. Donor, the Curator, Dr. H. S. Harrison, F.R.A.I. L.335
- Spink's Numismatic Circular, Vol. XXXI., 1923. By Subscription. L.339
- Museums Journal. Vol. XXII., 1922-23. By Subscription. L.340

Reports.

Received from April 1st, 1923, to March 31st, 1924.

Bootle, Free Library and Museum
 Cambridge, Fitzwilliam Museum
 Cambridge, Friends of the Fitzwilliam Museum
 Cardiff, The National Museum of Wales
 Chester, Society of Natural Science, etc.
 Grantham, Public Library and Museum
 Hove, Public Library and Museum
 Manchester, Manchester Museum
 New York, American Museum of Natural History
 Northampton, County Borough Museum
 Norwich, Castle Museum
 Nottingham, Art Museum
 Oxford, Ashmolean Museum
 Salisbury, South Wilts and Blackmore Museums
 Southend-on-Sea, Public Library and Museum
 Spalding, Gentlemen's Society
 Swansea, Royal Institution of S. Wales
 Sydney, N.S.W. Technological Museum
 Washington, U.S.A., National Museum
 Wisbech, Museum
 Yorkshire Philosophical Society

N.B.—Curators of Museums will much oblige by forwarding their reports in exchange as issued.

List of Donors.

American Museum of Natural History, Trustees of (New York)

Anonymous

Bacon, Norman H. (West Mersea)

Benham, Alderman W. G. (Chairman)

Bilney, B. J. V. (Brightlingsea)

Blacklock, G.

Boon, Miss S.

Bosanquet, Professor R. C. (Alnwick)

Brown, C.

Bury, Professor J. B. (Cambridge)

Butcher, H. C. (Ilford)

Cater, Mrs. Adelaide

Chalmers, A. (Tendring)

Chichester, Dr. E.

Christy, Miller (London)

Clark, Duncan W.

Clarke, H. C.

Clarke, Mrs.

Colchester Brewing Company, Ltd.

Colchester Castle Purchase Committee

Colchester Manufacturing Company, Ltd.

Collins, H.

Crawshay, R. V. E. de B. (Sevenoaks)

Crowther-Beynon, V. B. (Beckenham)

Cunnington, Mrs. M. E. (Devizes)

Cunnington, H. J. (Braintree)

Curling, Rev. T. H. (Halstead)

Davis, S. (Richmond)

Denton, F.

Drane, A. (Belfast)

Duckworth, G. H. (London)

Essex County Hospital, Committee of

Essex Field Club, Council of (Stratford)

Essex Museum of Natural History (Exchange)

Everett, H. and Son
 Farman, F.
 Finch, C. R. (Great Baddow)
 French, — (West Mersea)
 French, Sergeant H. A. (Aldershot)
 Frost, A. W.
 Godfrey, C. P. and P. G.
 Godfrey, Miss
 Grimston, Mrs. Walter (Earls Colne)
 Guébhard, Dr. A. (France)
 Hall, Rev. Wm. C. (Coggeshall)
 Harrison, Dr. H. S. (Horniman Museum)
 Hayes, Rev. J. W. (Loughton)
 Hearn, Mrs. J. (Rainham)
 Hills, Alfred (Bocking)
 Hull, M. R.
 Hunnable, Councillor G. (Braintree)
 Irwin, Miss (Depositor)
 Jacobs, S.
 Jarmin, A. F.
 Jarmin, Councillor A. M.
 Keys, H. C.
 Keys, E. (Feering)
 Laver, Captain H. E.
 Laver, Dr. Philip G.
 Lazell, H.
 London County Council, Clerk of (London)
 Meadon, S.
 Mothersole, H. (Chelmsford)
 National Museum, Acting Director of Dublin
 National Museum of Wales, Director of (Cardiff)
 Offord, H. E.
 Oswald, Dr. Felix (Nottingham)
 Partridge, A. E. (Aldham)
 Paull, W.

Putt, F. G.
 Péquart, M. le Saint-Just (France)
 Ralling, T. J.
 Roper, George
 Round, Douglass G. (Witham)
 Rowe, L. Earle (Rhode Island, U.S.A.)
 Rowland, Councillor Dr. P.
 Rudkin, J.
 Rudkin, Mrs. J.
 Rudsdale, E. J.
 Seragg, W. G. (West Bergholt)
 Sewell, E. C. (Cirencester)
 Shepherd, W. J.
 Sheppard, T. (Hull)
 Smith, —
 Spain, Lieut.-Colonel G. R. B. (Newcastle)
 Stanway, Rural District Council of (Depositors)
 "Times," Art Editor of (London)
 Truman, Hanbury, Buxton & Co., Ltd.
 Turner, J. Ashton (West Mersea)
 Ventriss, Major -General F. (St. Leonards-on-Sea)
 Walter, Dr. R. H. (Stoke-under-Ham)
 Ward, G. C.
 Watts, Mrs. T. W.
 Weddell, Arthur
 Wheeler, Dr. R. E. M. (Cardiff)
 Whiting, W. (Faversham)
 Wilton, E.
 Wright, A. G. (Curator)

FORMS OF BEQUEST.

I bequeath out of such part of my personal Estate as may by Law be bequeathed for such purposes, to the Mayor, Aldermen and Burgesses of the Borough of Colchester, the sum of

free from Legacy duty, for the Benefit of the Corporation Museum of Antiquities, to be expended in such a way as they may deem expedient; and I direct that the receipt of the Treasurer for the time being of the said Borough shall be an effectual discharge for the same Legacy.

I bequeath*

*ANTIQUITIES

OR OTHER

OBJECTS. to the Mayor, Aldermen and Burgesses of the Borough of Colchester (Free from Legacy Duty, which duty, I direct shall be paid out of my pure personality) for the benefit of the Corporation Museum of Antiquities, either for Exhibition, or for such other purposes as they may deem expedient: and I further direct that the Receipt of the Town Clerk for the time being of the said Borough shall be an effectual discharge for the same Legacy.

Publications.

The following publications can be obtained at the Museum, or will be forwarded by post on application; *postage extra.*

ESSEX BRONZE IMPLEMENTS AND WEAPONS in the Colchester Museum. By *Charles H. Butcher*. 12 pp., 6 plates 1/-

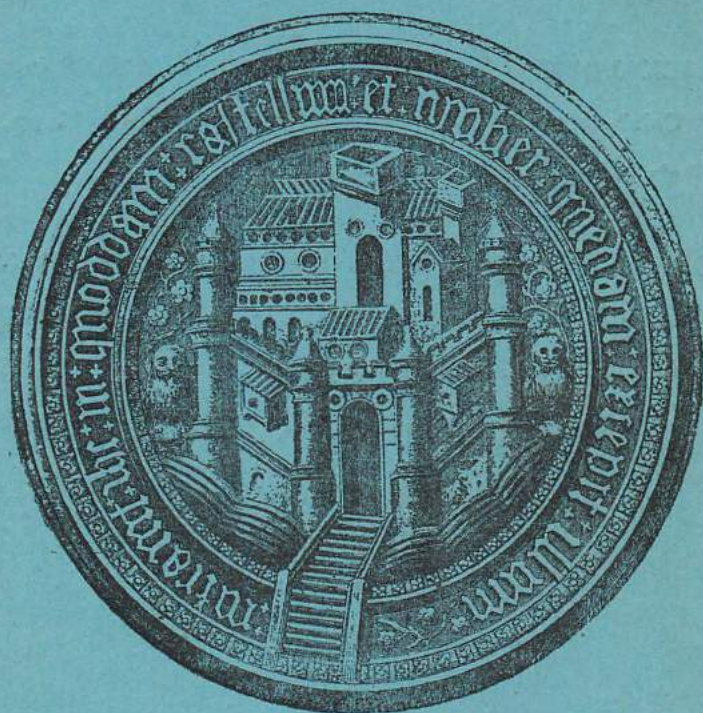
MORANT CLUB REPORT, AN INSULA OF ROMAN COLCHESTER. By *R. E. M. Wheeler*, M.C., M.A., D.Lit. 41 pp., 2 plans, 11 illustrations. 1/-



Picture Post Cards

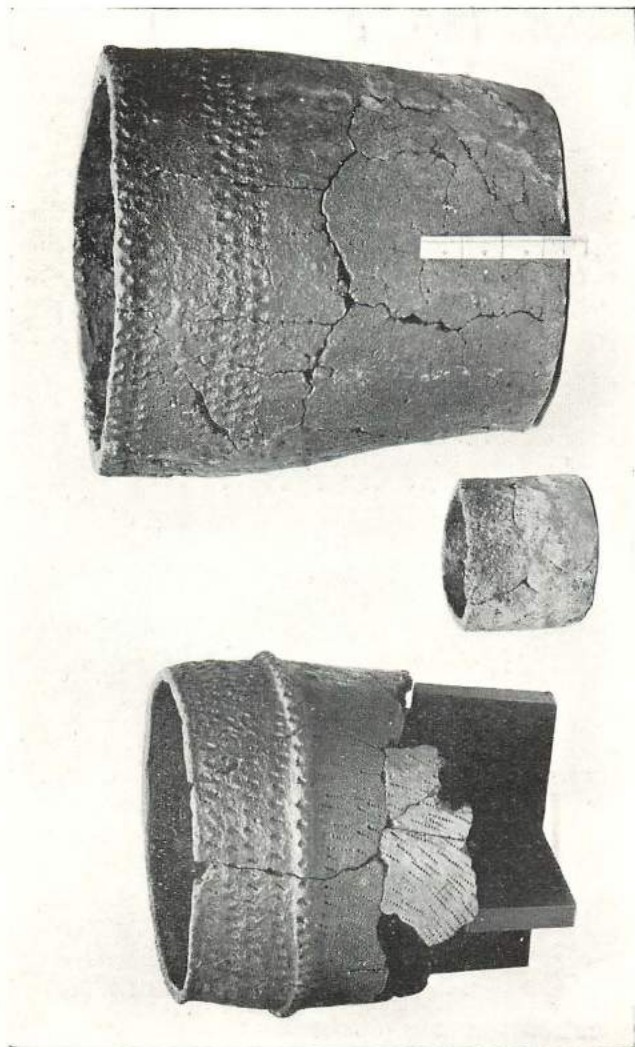
Of the Castle and various Antiquities in the Museum are on Sale at the Museum, price One Penny each, or in Sets as under:—

Views of Castle	Set of 12—10d.
Antiquities—Bronze and Iron Ages	10— 9d.
„ Romano-British Period	14— 1/-



(REVERSE OF BOROUGH SEAL, 15TH CENTURY).

PLATE I.



T. C. Gall, photo.

Nos. 4867, 4868, 4866.24, page 9.

Borough of



Colchester.

THE
Corporation Museum
OF
LOCAL ANTIQUITIES

(FOUNDED 1846).

REPORT
OF THE
Museum and Muniment Committee

For the Year ended 31st March, 1925.

PRICE—SIXPENCE.

COLCHESTER :
THE ESSEX TELEGRAPH LIMITED.
1925.

Committee and Officers.

COMMITTEE, 1924-25

Alderman W. G. BENHAM, F.S.A., F.R.Hist.S., J.P.. *Chairman.*

Councillor A. M. JARMIN, F.R.Hist.S., J.P., *Deputy-Chairman.*

THE WORSHIPFUL THE MAYOR.

(Councillor Dame CATHERINE R. HUNT, D.B.E., J.P.)

The Deputy-Mayor, (Councillor Mrs. C. B. ALDEBTON, J.P.)

Alderman WILSON MARRIAGE, J.P., C.C.

Alderman W. COATS HUTTON, J.P.

Alderman J. T. BAILEY, J.P.

Alderman E. A. BLAXILL, J.P.

Councillor A. W. PIPER.

*The following Members represent the
Essex Archæological Society :—*

Mr. PHILIP G. LAVER, F.S.A.

Mr. DUNCAN W. CLARK, A.R.I.B.A.

Rev'd. G. MONTAGU BENTON, F.S.A.

CURATOR :

ARTHUR G. WRIGHT.

ASSISTANTS :

W. F. BELL.

B. J. SIMPSON.

The Corporation Museum.

To the Mayor and Council of the Borough of Colchester.

LADIES AND GENTLEMEN,

We beg to submit our Report on the Corporation Museum for the year ended 31st March, 1925.

The total number of visitors to the Museum during the year was 40,419.

As in previous years, a large number of interesting and valuable accessions have been acquired either by gift or purchase.

The discovery of a Late Bronze Age cemetery on the Fox and Pheasant Farm at White Colne has resulted in a number of fine Cinerary Urns of this period—dating from about 1000 B.C. to 500 or 400 B.C.—being added to our collection of Bronze Age antiquities. The Urns—which are fully described and illustrated in the Report—are principally the gift of Mr. Francis Smith, the occupier of the farm. To Miss Nina F. Layard, F.S.A., and Mr. Thos. F. Morgan we are also indebted for Urns from this site; and to Mr. F. J. Gurney for a number of Flint Tools and Flakes found in the soil in which the Urns were buried.

Another wall case has been erected on the last pier in the corridor, in which some of the above-mentioned Urns will be arranged, and a new upright "island case" has been added to those already installed in the Romano-

British Room, in which it is proposed to exhibit a further series of Burial Groups.

An event of the year has been the excavation of the Tumulus on the Lexden Park Estate, under the supervision of Dr. Philip Laver and Captain Edward Laver, and it is hoped that a number of the interesting objects recovered will be on view during the coming autumn.

The ordinary routine work of the Museum has resulted in the cleaning, restoration, and numbering of specimens and their arrangement in the various collections.

W. GURNEY BENHAM,
Chairman.

ARTHUR G. WRIGHT,
Curator.

Visitors to the Museum.

			1924-25.	
			Days open	Attendance.
April	25	4139
May	27	3346
June	25	4570
July	27	4897
August	26	9002
September	26	4924
October	27	2515
November	25	1569
December	25	1271
January	27	1399
February	24	1313
March	26	1474
<i>Total...</i>	315	40419

BANK HOLIDAY ATTENDANCES.

Easter Monday, 21st April, 1924	...	556
Whit Monday, 9th June, 1924	...	588
August Monday, 4th August, 1924	...	471
26th December, 1924	...	Closed

The total number of Visitors for the year ending March 31st, 1903, was 20,887; 1904, was 27,039; 1905, was 28,408; 1906, was 29,588; 1907, was 31,078; 1908, was 30,875; 1909, was 29,842; 1910, was 34,453; 1911, was 29,423; 1912, was 27,298; 1913, was 32,149; 1914, was 29,564; 1915, was 49,689; 1916, was 44,810; 1917, was 46,437; 1918, was 47,610; 1919, was 51,496; 1920, was 46,144; 1921, was 39,639; 1922, was 37,947; 1923, was 42,860; 1924, was 43,004.

The Colchester Museum

IS OPEN DAILY FROM

1st April to 30th September—10 a.m. till 5 p.m.

1st October to 31st March—10 a.m. till 4 p.m.

AND CLOSED ON

Sundays, Good Friday, and Christmas Day, and such other days as the Committee may order.

ADMISSION FREE.

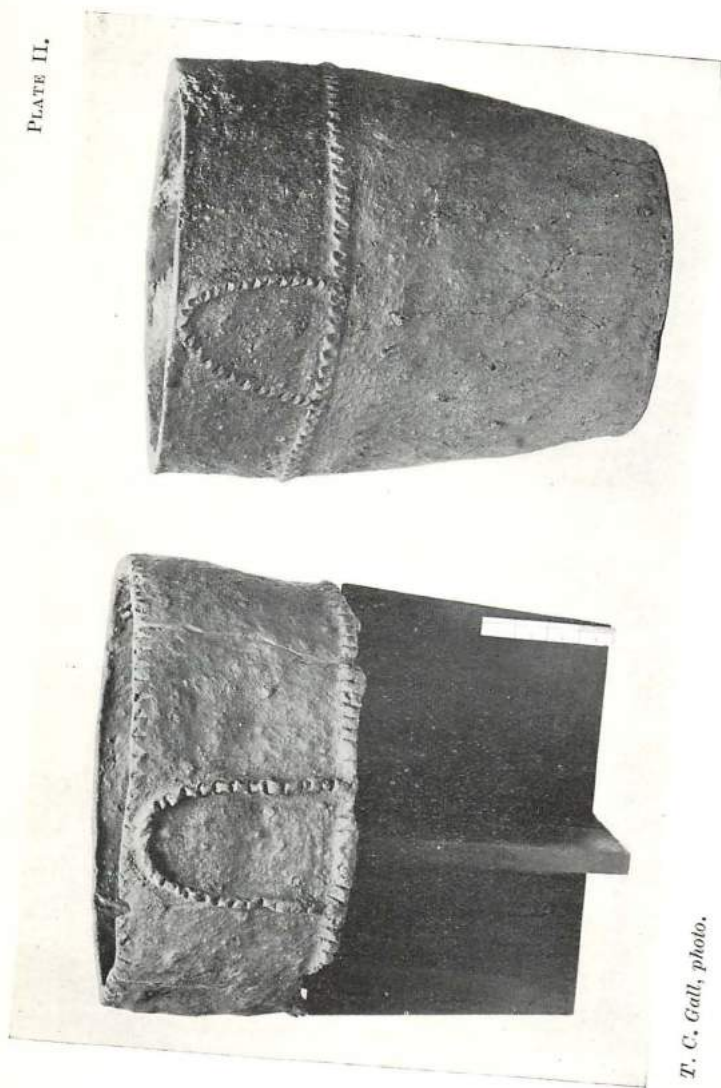
It is urgently requested that any discovery of Archaeological interest in the neighbourhood may be brought to the notice of either the Chairman or the Curator as early as possible.

The Curator will be pleased to give any information in his power and may be seen daily, Museum engagements permitting.

Postcards of many of the most important antiquities, and a new series showing the Castle from various points of view, may be obtained in the Museum at One Penny each.

Curator ... ARTHUR G. WRIGHT.

PLATE II.



T. C. Gall, photo.

Nos. 4919, 4920.24, page 7.

List of Additions to the Museum

BY GIFT AND PURCHASE

From 1st April, 1924, to 31st March, 1925.

All the objects were found in Colchester unless otherwise stated.

STONE AND BRONZE AGES.

Chipped Axe of grey flint, 5ins. long, 3 Cores, a Sandstone Rubber and a large number of Flint Flakes, some with secondary working, all acquired by donor from site of Late Bronze Age cemetery at White Colne. Donor, Mr. F. J. Gurney. 4860.24

Portion of hilt of Bronze Sword with 4 rivet holes in either shoulder. Found in Barking Creek. Late Bronze Age, *circa* 900 B.C. Purchased. 4880.24

Bronze Socketed Axe with loop, similar to Evans, No. 167, but without fluting round neck. Found at Stratford, Essex. Late Bronze Age. Purchased. 4881.24

The upper portion or rim of an Urn, of reddish-brown ware, with notched cordon 6ins. below brim; the top edge is notched and there are two raised notched loops on rim above cordon. Present height 7ins., mouth 13 $\frac{3}{4}$ ins. From Late Bronze Age cemetery, White Colne. (Plate II., fig. 1.) Donor, Miss Nina F. Layard, F.S.A. 4919.24

Large Cinerary Urn (Abercromby, type 4) of similar ware to the preceding, rough exterior, with narrow cordon of finger-tip impressions 4 $\frac{3}{4}$ ins. below edge of the plain rim on which are two large loops of similar impressions representing handles; these and the cordon are probably derived from an early method of handling with a twisted rope or thong band and loops. Height 14 $\frac{3}{4}$ ins., diameter of mouth 18 $\frac{3}{4}$ ins., base 9ins. From Late Bronze Age cemetery at White Colne. Donor, Miss Nina F. Layard, F.S.A. (Plate II., fig. 2.) 4920.24

A similar Urn to the preceding, with cordon of impressed finger-tips $4\frac{3}{4}$ ins. below beaded brim; above the cordon are three rows of finger-tip impressions and four rows below, which extend to within 5 ins. of base; the top of rim is also impressed. Height $17\frac{1}{2}$ ins., mouth $13\frac{9}{16}$ ins. Base wanting. Partly restored. From Late Bronze Age cemetery, White Colne. (Plate III., fig. 1). Donor, Miss Nina F. Layard, F.S.A 4921.24

Bronze Fish-hook with barbed point, the upper part of shank hammered flat to turn back and form a loop or eye—in this case imperfect. Found in Thames at Grays, Essex. Late Bronze Age. Purchased. 4924.24

Similar fish-hooks have been found on the sites of Lake dwellings, (see Munro, "Lake Dwellings of Europe," pages 16, 48, 72). Evans' "Bronze Implements," records only one example, found in Ireland (see page 192, fig. 230).

Large Implement of flint, of Chelles type, with thick butt, partly covered with natural crust, the point broken in ancient times. Length $6\frac{1}{2}$ ins. Found at Grays. Purchased. 4925.24

Two smaller Implements of same type with crust on butts, slightly ochreous patina. Lengths $4\frac{9}{16}$ ins. and $3\frac{1}{2}$ ins. respectively. Found at Grays. Purchased. 4926-7.24

A number of Flint Flakes, some with secondary working, Cores, etc., from site of Late Bronze Age cemetery, White Colne. Donor, Mr. F. J. Gurney. 4930.24

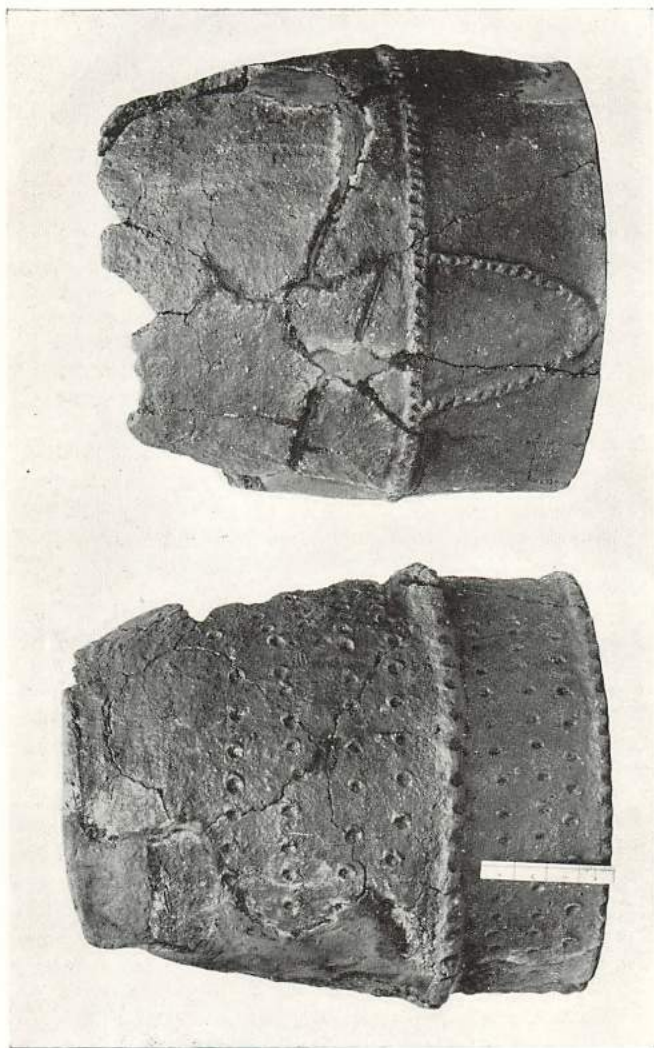
Small Whetstone of Schist. Bronze Age. Found at West Mersea. Donor, Mr. Ashton Turner. 4949.24

Large Cinerary Urn of thin brick-red ware with admixture of fine grit; the Urn is quite plain, with flat-topped brim; contained burnt bones, amongst which were fragments of two teeth. Height $11\frac{1}{2}$ ins., mouth $9\frac{1}{2}$ ins., base $6\frac{7}{8}$ ins. From Late Bronze Age cemetery, White Colne. (Plate IV., fig. 3). Donor, Mr. Thomas F. Morgan. 4950.24

Rubber made from portion of a large pebble and 32 Flint Flakes, some with secondary working. From site of Late Bronze Age cemetery, White Colne. Donor, Mr. Thomas F. Morgan. 4951.24

Early in 1924 a Late Bronze Age cemetery or Urn Field was discovered by workmen getting gravel on the Fox and Pheasant Farm, White Colne, in the occupation of Mr. Francis Smith. The cemetery

PLATE III.



T. C. Gall, photo.

Nos. 4921.24, page 8, 5001.25, page 10.



T. C. Gall, photo.

5004.25,
5002.25.

5005.25,
5003.25.

5006.25,
4950.24, pages 8 and 10.

is situated on low ground to the north of and not far from the river Colne (O.S. Sheet xvii., N.E.) the average depth of soil was about 15 to 18 inches.

The Urns were interred in rows, running East and West, and many were inverted over the cremated remains. Each urn was placed in a small pit, which was dug down to, and in some cases slightly into, the underlay of gravel, the tops or bases, as the cases might be, of the urns lying but very little below the surface; the soil was filled with flakes, many of which show secondary working; rubbing and pounding stones, and a small clipped axe of grey flint were also found. The numerous flakes scattered throughout the soil suggest that the site was probably a working floor in Neolithic times. No worked flakes were found in the urns, but gravel flints occurred which had filtered in in the course of time; no metal in any form accompanied the interments.

The urns belong to the bucket-shaped type 4 of Lord Abercromby's classification and are dated by him between 900 and 500-400 B.C.

The following urns Nos. 4866-8.24, 5001-12.25 from the cemetery have been presented to the Museum by Mr. Francis Smith.—

Cinerary Urn (Abercromby, type 4) of coarse brown ware with two rows of finger-tip impressions on outer edge of brim and one row on inside edge, two inches below the two rows are three rows of impressions, the rest of the urn is plain. The urn had evidently been used for domestic purposes and cracked in ancient times as holes had been drilled on each side of the cracks for repair by lacing with thongs or sinews. It contained calcined human bones, amongst which was one molar tooth. Height 12ins., diameter of mouth 11½ins., base 9ins. Partly restored. (Plate I., fig. 3.) 4866.24

Cinerary Urn, same type as above, of coarse ware with slight admixture of grit and smoothed surface; 2½ins. below the brim is a raised cordon ornamented with finger-tip impressions, which also cover the rim above and top edge of same; below the cordon the urn is ornamented with vertical rows of small pit-like impressions probably produced by a comb or thin piece of wood or bone notched saw-wise; a fragment of the base of this urn shows finger-tip impressions round the edge and comb-like impressions on under side. Like the preceding urn, this vessel had been cracked in ancient times and holes had been drilled for repair. Present height 8ins., diameter at mouth 8½ins., base wanting. Partly restored. (Plate I., fig. 1.) 4867.24

Small Food Vessel of thin coarse gritted ware, with upright sides, undecorated. Height 3¼ins., mouth 3½ins., base 3½ins. Partly restored. (Plate I., fig. 2.) 4868.24

Cinerary Urn of coarse, reddish-brown ware with smooth exterior, on which are vertical striations showing method of manufacture, a raised cordon of finger-tip impressions, $5\frac{1}{2}$ ins. below slightly beaded and flattened brim, two raised and impressed loops above cordon; the rest of the urn is undecorated. Present height 16ins.; mouth $14\frac{1}{4}$ ins. Base wanting. (Plate III., fig. 2). 5001.25

Cinerary Urn of coarse, reddish-brown ware with smooth exterior, showing vertical striations and a group of finger-nail impressions partly surrounding an oval depression probably made by finger-tip, the rim slightly incurved and thin; contains burnt bones and a few pieces of charcoal. Height $10\frac{1}{2}$ ins.; mouth $7\frac{1}{2}$ ins.; base 6ins. (Plate IV., fig. 1). 5002.25

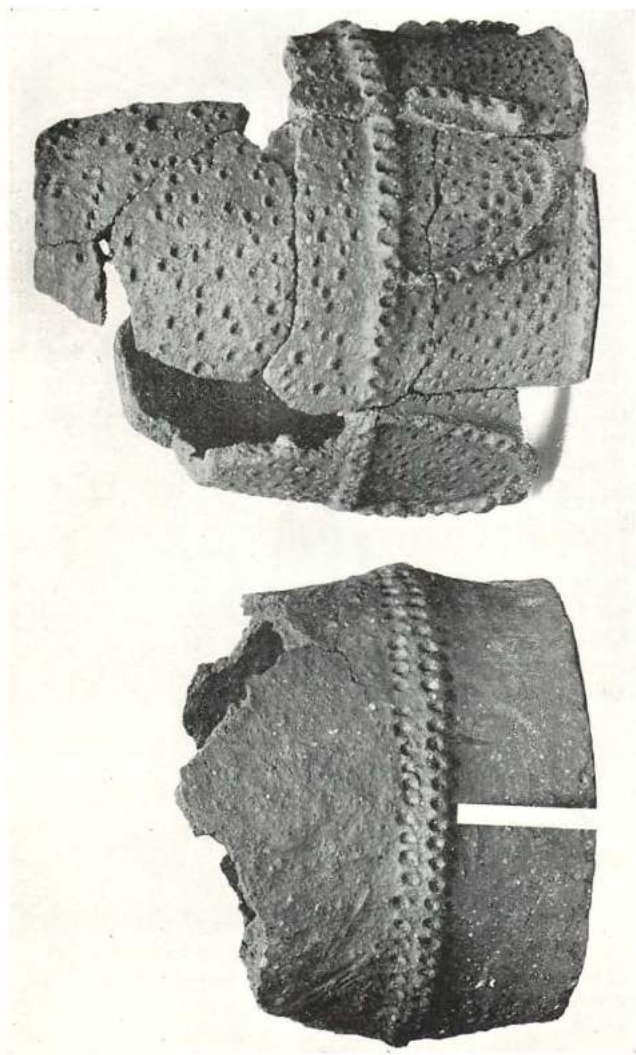
Cinerary Urn of thin, coarse brown ware with smooth exterior, a slightly raised cordon of finger-nail impressions $3\frac{3}{4}$ ins. below thin brim, four loops of finger-tip impressions above cordon on the inward-sloping rim, which suggests that this urn is early in the series and was probably derived from the type with broad, overlapping rim. Height $13\frac{1}{4}$ ins.; mouth $9\frac{1}{2}$ ins. base $6\frac{3}{4}$ ins. Contains a few pieces of calcined bone. (Plate IV., fig. 2). 5003.25

Cinerary Urn of coarse, reddish-brown ware, with raised cordon of finger-tip impressions $3\frac{3}{4}$ ins. below beaded and impressed flat brim; the flat rim is covered with horizontal rows of finger-tip impressions, except for a panel 2ins. wide, where the impressions are vertical. The urn has been cracked in ancient times and repaired by drilling holes along the crack for lacing with thong or cord. (Plate IV., fig. 4). 5004.25

Cinerary Urn of coarse, reddish-brown ware, with light, vertical striations, made with a wooden or bone tool, and two rows of finger-tip impressions below brim, which is also impressed. This urn has been cracked and drilled for repair in ancient times. Present height 9ins.; mouth $9\frac{1}{2}$ ins.; base wanting. (Plate IV., fig. 5). 5005.25

Cinerary Urn of coarse, reddish-brown ware with admixture of grit, the sides entirely covered with finger-tip impressions, and top of brim. Cracked and drilled for repair in ancient times. Height 11ins.; mouth 10ins.; base incomplete. (Plate IV., fig. 6). 5006.25

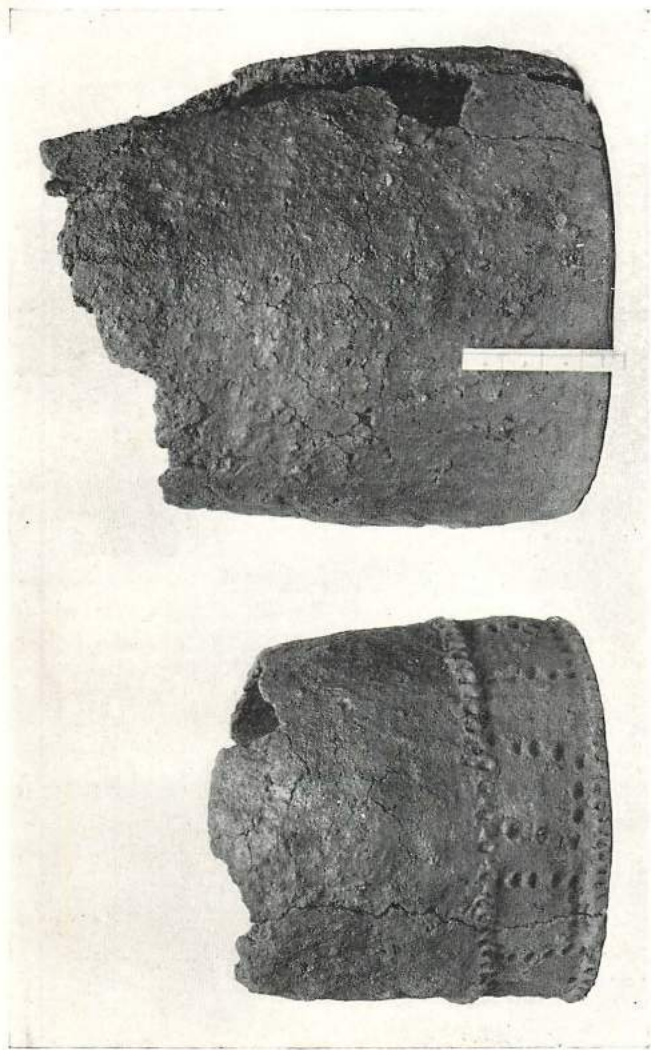
PLATE V.



T. C. Gall, photo.

Nos. 5007, 5008.25, page 11.

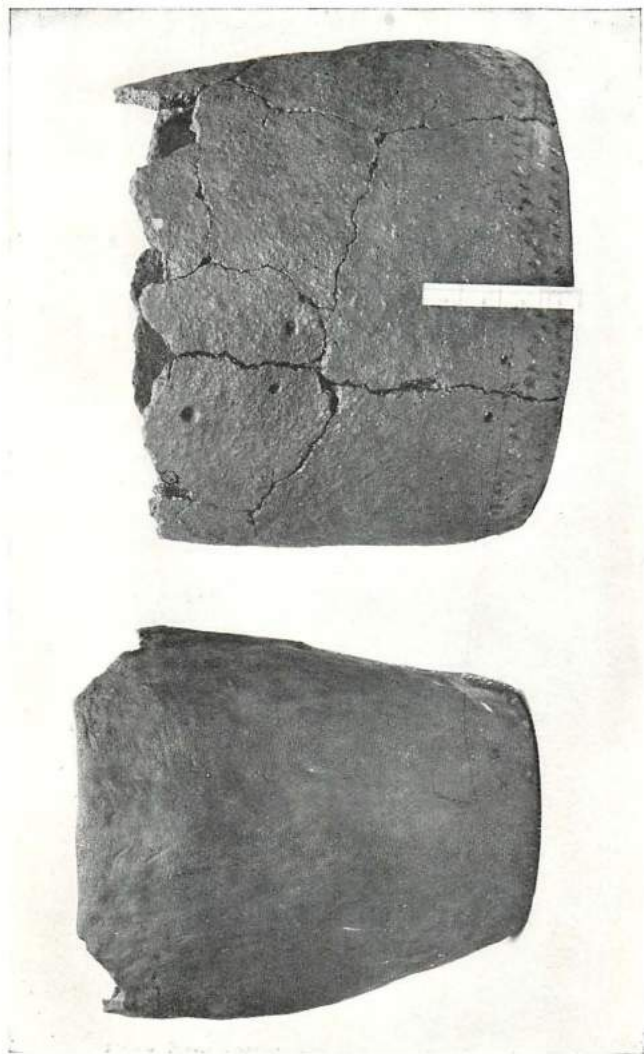
PLATE VI.



T. C. Gall, photo.

Nos. 5009, 50010.25, page 11.

PLATE VII.



T. C. Gull, photo.

Nos. 5011, 5012.25, page 11.

Cinerary Urn of coarse, reddish-brown ware with strong admixture of coarse grit, a cordon of finger-tip impressions $4\frac{1}{2}$ ins. below impressed brim; a single row of finger-tip impressions above and below cordon; below the impressions are occasional groups of finger-nail markings. Present height 12 ins.; mouth $13\frac{3}{8}$ ins.; base wanting. (Plate V., fig. 1). 5007.25

Cinerary Urn of coarse, reddish-brown ware with admixture of coarse grit, a raised cordon of finger-tip impressions 6 ins. below the slightly beaded brim, which is smooth on top and impressed on outer and inner edges; above the cordon are four raised and impressed loops, the rim and body of the urn being covered with small finger-tip impressions. Height 16 ins.; mouth $14\frac{3}{8}$ ins.; base imperfect and 1 in. thick. (Plate V., fig. 2). 5008.25

Cinerary Urn of coarse, reddish-brown ware with raised cordon of finger-tip impressions $8\frac{1}{2}$ ins. below the beaded brim, which is impressed on both inner and outer edges; above the cordon are seven impressed loops, the rest of the rim and the body of the urn are undecorated. Present height $10\frac{1}{2}$ ins.; mouth $10\frac{9}{16}$ ins.; base wanting. (Plate VI., fig. 1). 5009.25

Cinerary Urn of coarse, reddish-brown ware with finger-tip striations on sides, the top of rim indented with finger-tips. Present height $14\frac{3}{4}$ ins.; mouth $12\frac{3}{4}$ ins.; base wanting; imperfect. (Plate VI., fig. 2). 5010.25

Cinerary Urn of hard, thin, reddish-brown ware with slightly incurved brim; the surface has been smoothed with a fine brush. Height $13\frac{1}{8}$ ins.; mouth imperfect; base $7\frac{5}{16}$ ins. It contains a few fragments of calcined bones. (Plate VII., fig. 1). 5011.25

Cinerary Urn of coarse, reddish-brown ware with slight admixture of grit; two rows of finger-tip impressions extending $1\frac{1}{2}$ ins. below the rounded brim. It has been cracked on two sides in ancient times and drilled for repair by lacing with thong or sinew. Present height $11\frac{3}{4}$ ins.; mouth $13\frac{1}{4}$ ins.; base wanting. It contained calcined bones and flints and a little charcoal. (Plate VII., fig. 2). 5012.25

EARLY IRON AGE AND ROMANO-BRITISH PERIODS.

- Small Bowl of buff ware with light brown exterior. Rim fragment of large Store Vessel of hard tile-red ware with dark exterior, a raised cordon $2\frac{3}{8}$ inches below brim is decorated with incised chevrons. Rim fragment of large Store Vessel with bent-over square-edged rim of similar ware to preceding; below the rim is a row of ring and dot ornament between two tooled girth grooves. Portion of a large cover of coarse gritted pink ware with traces of dark chocolate-red colour coating and tooled concentric grooves. "First brass" Coin of Antoninus Pius found with above; legend illegible. Donor, Dr. Philip G. Laver, F.S.A. 4786-4790.24
- Fragments of Tiles from Abbey Field, Countess Cross, Colne Engaine. Roman. Donor, Mr. F. J. Gurney. 4791.24
- Several fragments of Flue Tiles, some with red mortar adhering. Three fragments of painted Wall Plaster. Large Angle fragment of red cement, with painted exterior. Base point of large Amphora. Bronze Ferule with moulded base. Small bronze object with loop resembling cover of a keyhole. Small bronze Finger Ring with glass or crystal bezel engraved with a lion with crescent above. Donor, Dr. Philip G. Laver, F.S.A. 4793-4802.24
- Base fragment of "Samian" Bowl with potter's stamp **SVLPICI**. Ditto of "Samian" Cup 27 with stamp **LATINVS**. Donor, Mr. Councillor A. M. Jarmin, F.R.Hist.S. 4804-5.24
- Upper portion of Skull of Bos, dredged from river, 1924. Probably Roman period. Donors, Masters R. D. Baugham and C. Hitchcock. 4807.24
- Neck and handles of Amphora of buff ware. Donor, Dr. Philip G. Laver, F.S.A. 4806.24
- Indented Beaker of dark grey ware, with seven oval depressions; height 6 $\frac{1}{2}$ ins. Base of Pedestalled Vase of grey ware. Large portion of "Samian" Bowl (Form 37) with decoration of small medallions. Half of a "Samian" Cup 27, ditto 33. Small circular Tessera of grey ware. Bone Spindle and two others, imperfect. Bronze Acorn. Portion of large bronze Hook; portion of a bronze Buckle, tinned, small bronze Buckle, and two bronze Mounts. Purchased. 4810-15, 4827.24

- Bone Spindle and two others, imperfect. Purchased.
4825-26.24
- Small buff ware Pot, imperfect. Painted Mask of buff
ware flagon. Donor, Dr. Philip G. Laver, F.S.A.
4841-42.24
- Calvarium of Human Skull, dredged from River Colne,
1924. Probably Roman period. Donor, Dr. Philip G.
Laver, F.S.A. 4843.24
- Neck and handles of Lagena of buff ware, 1st century,
A.D. Mouth of vessel of fine polished grey ware,
probably Belgic, 1st century, A.D. Portion of
"Samian" Cup 27, and other fragments of Roman
ware, found on site of 41, Head Street. Donors,
Messrs. F. C. Winch. 4847-4849.24
- Small Brick of hard red ware $4\frac{1}{2}$ ins. x $2\frac{1}{2}$ ins. x $1\frac{1}{2}$ ins.
Portion of quadrant ditto for making columns, length
along fracture $16\frac{1}{2}$ ins., thickness $2\frac{1}{2}$ ins., with impression
of animal's foot on front edge. From Castle debris.
4857-58.24
- Bronze Nail with large circular head, found in donor's
garden, North Hill. Donor, Mr. A. W. Frost. 4863.24
- Sacrum of Bos, dredged from River Colne, 1924. Probably
Roman period. Donor, Master G. Mumford. 4874.24
- Portion of a carved bone Handle for a knife or dagger.
Donor, Dr. Penry Rowland. 4876.24
- Four fragments of irridiscent Roman Glass, one of blue,
white, and yellow marbling. Donor, Dr. Philip G.
Laver, F.S.A. 4877.24
- Small bronze Axe Hammer with large threaded opening
for handle, length $1\frac{5}{8}$ ins. Bronze penannular Ring
with portion of circumference twisted spirally,
diameter $1\frac{1}{2}$ ins. Several fragments of red and grey
wares and handle of Stag Horn, all found with above
hammer head. Purchased. 4882-84.24
- Triangular Tile formed from a portion of a flue tile, the
wavy tooled lines for keying on the plaster running
along the two sides. Donor, Mr. May, jun. 4888.24
- Fragment of Roofing Tile with footprints of dog and goat,
two red ware tesserae, and 19 ditto. Donor, Dr. Philip
G. Laver, F.S.A. 4902-4904.27

Fragments of buff ware Mortar with maker's stamp, **Q. VALERIVS VERANIVS**. Fragment of another with undecipherable stamp. Donor, Dr. Philip G. Laver, F.S.A. 4907-8.24

Portion of a small rectangular tray of Shale with carved sides. Donor, Dr. Philip G. Laver, F.S.A. 4911.24

Circular object of pale buff ware with projection at side, and design of an eight-petalled flower within concentric circles in relief. A similar specimen found at Stanway was presented to the Museum in 1915. See Annual Report 3301.15. Donor, the Mayor of Colchester (Councillor Mrs. C. B. Alderton). 4913.24

Base of a T-piece of coarse red ware from a Red Hill, near Duck Decoy, West Mersea. Date uncertain. Donor, Mrs. Kitchener. 4922.24

A number of fragments of pottery of various kinds found in donor's garden adjoining Mr. Hunnable's gravel pit, London Road, Braintree. Donor, Mr. Brown. 4931.24

Burial Group, consisting of Flagon of fine light buff ware, Beaker of ditto with rouletted zones, ditto of thin fine red ware with zones of rouletting and incised trellis pattern, Belgic ware. Platter of Belgic terra nigra with potter's stamp in centre. About 50 A.D. Donor, Dr. Philip G. Laver, F.S.A. 4732.24

For similar Beaker of thin red ware see Fox, *Archæology of Cambridge Region*, page 91, plate xiii., fig. 13.

A number of fragments of Roman and Medieval wares from the site of their premises in Stanwell Street, 1924, including Handle of Early Cylindrical Amphora and half of a buff ware Mortar. Donors, The Colchester Manufacturing Co., Ltd. 4934.24

Finger Ring of silver with circular engraved bezel, the subject undeterminate. Purchased. 4938.24

Large tubular band of blue glass inlaid with annulets of white vitreous paste $\frac{15}{16}$ ins. long, $\frac{1}{16}$ in. thick, hole $\frac{1}{16}$ in. in diameter. Found at Kelvedon. Early Iron Age. Purchased. 4939.24

For similar head see Dechelette, *Manuel, Second Age du Fer*, p. 1315, fig. 573, No. 1.

Silver Finger Ring and pair of silver Ear-rings found in a child's grave. About 3rd century A.D. Purchased. 4940.24

Intaglio in blue veined stone with nude figure moving to right. On the back is engraved in two lines
IWEH | AVO. Purchased. 4941.24

Roman Bone Pin found by donor in his garden at West Mersea; point wanting. Donor, Mr. E. J. French.
 4944.24

Small Vase of fine grey ware with deep girth groove round bulge, neck wanting; and a number of fragments of other wares found at Braintree. 1st century A.D.
 Donor, Mr. E. T. Bond. 4961.25

Large Olla (Walters type 65) of grey ware; neck wanting; had been used as a cinerary urn, and contains pieces of burnt bone. Present height 11½ ins. Small vase of dark brown ware with smooth exterior and girth groove on shoulder; height 4¾ ins., found with Olla. About 1—50 A.D. Olla of light grey sandy ware with thick moulded and everted rim. 1st or early 2nd century; imperfect. Donor, Dr. Philip G. Laver, F.S.A.
 4969-71.25

Lower portion of small bulbous Beaker of Durobrivian ware with white slip scrolls on black exterior. 3rd century A.D. Donor, Mr. A. W. Frost. 4972.25

Portion of a slender Bangle of Kimmeridge Shale. Early Iron Age. About 1 to 50 A.D. Donor, Dr. Philip G. Laver, F.S.A. 4975.25

Bone Pin with spherical head. Roman. Donor, Mr. B. J. Simpson (Attendant). 4976.25

Small bronze Fibula showing traces of tinning. Donor, Dr. Philip G. Laver, F.S.A. 4980.25

Fragments of a small hand-made Pot or Bowl of soft dark brown ware with smooth surface. Early Iron Age. Donor, Dr. Philip G. Laver, F.S.A. 4986.25

For similar types of Vessel and wares see Hengistbury Excavations Report, by J. P. Bushe-Fox, F.S.A.; page 56, plate xxviii., No. 38.

Mouth of large Olla of grey ware. 1st century A.D. Melon-shaped Bead of blue frit. 1st Century A.D. Donor, Dr. Philip G. Laver, F.S.A. 4988.25, 4992.25

Burial Group consisting of (1) Flagon of brown grey ware with outer coating of dull red slip, narrow double-ribbed handle and slightly concave beaded base; (2) Two-handled Vase or Lagena of similar ware with three shallow cordons on shoulder; (3) Wide-mouthed Subcarinate Bowl of hard dark red ware with dark brown exterior and tooled girth grooves and lines on shoulder and body. Imperfect. Early Iron Age, about 50 A.D. Donor, Dr. Philip G. Laver, F.S.A.

4989-91.25

For similar Bowls and Flagon see Hengistbury Report, Bushe-Fox, page 35, plate xviii., 28-29, and Swarling Report, page 20, plate v., fig. 1., and plate viii., Nos. 15-17.

MEDIEVAL AND LATER.

Brass Spur showing traces of gilding, rowel missing. About time of Charles I. Found at White Colne. Donor, Mr. Francis Smith.

4808.24

Two Tobacco Pipes, dredged from river near Mill. Early 18th century. Purchased.

4808.24

Roasting Jack of japanned iron with clockwork winding. Early 19th century. Donor, Mr. Robert Parker.

4809.24

Mug of grey stoneware with brown exterior and crinkled base, 15th century. Large stoneware Jug or Bellarmine with mark on neck; height $17\frac{1}{4}$ ins. Another with mark, height ins.; ditto, height $12\frac{1}{2}$ ins.; ditto, with large angular handle, no mark, height $11\frac{1}{2}$ ins. Purchased.

4816-4820.24

Large globular Jug, with narrow neck, handle restored, covered with a bright red glaze with girth grooves on shoulder; inscribed, S. Bradbrooke. 1805; height, $11\frac{1}{2}$ ins. Purchased.

4821.24

Two Horn Drinking Cups, 4 ins. and 3 ins. high respectively, 18th or 19th century. Small Glass Bottle with flat rim, $1\frac{1}{2}$ ins. high, 17th century. Purchased.

4822-24.24

Silver Buckle inscribed Samuel Travers, Esq., 1724. Purchased.

4828.24

This Buckle was presented to and worn on belt by Christ's Hospital Mathematical Boys.

- Fragment of polychrome Delf Tile, 17th century. Donor,
Dr. Philip G. Laver, F.S.A. 4829.24
- Large Tortoiseshell Hair Comb with engraved back. Four
plain ditto. Tortoiseshell Hair Clasp. Toilet Bag in
coloured needlework by Susan Leapingwell of Yeld-
ham, 1761. Three pieces of Tambour work. Two
Pencil Drawings of Dutch engravings. Bird Whistle
of boxwood with moving figures, probably Swiss.
Donor, Miss E. Sadler. 4830-40.24
- Two narrow ivory or bone Markers with sliding brass
indicators. Circular white metal ditto with revolving
disc of numbers, probably used for scoring in games of
cards, etc. Early 19th century. Donor, Dr. Philip
G. Laver, F.S.A. 4844-5.24
- Glass Wine Bottle, 17th century, and several fragments of
Medieval wares found on site of 41, Head Street.
Donors, Messrs. F. C. Winch & Co. 4846-4850.24
- Tobacco Pipe Bowl in form of the head of a French Cuirassier
with helmet, and ditto with reliefs on either side of a
descent by parachute or an ascent by hot air balloon,
dredged from River Colne. Purchased. 4851-52.24
- Small Jug of Lambeth or Fulham stone ware with figures,
mill and hunting scene in relief, brown glaze over
upper part, handle restored, 18th century. Knife Rest
of blue and white ware, ditto. Dress Suspender of
gilt brass. About 1860. All dredged from river.
Purchased. 4853-5.24
- Pair of old Paste Ear Rings, early 19th century. Donor,
Miss E. Sadler. 4856.24
- Small Cup or Vase of buff ware with green and white
glaze, dredged from River Colne. Probably 17th
century. Donor, Dr. Philip G. Laver, F.S.A. 4862.24
- Two figures of sitting Cats or Leopards carved in clunch
and twisted handle of a large Gotch or Jug of reddish
buff ware with patches of mottled green glaze. 15th
century. From old Stanstead Hall, pulled down in or
about 1813. Donor, Mr. J. F. Gurney. 4864-5.24
- Carved oak Window Headings found during demolition of
premises in High Street for erection of annexe to
National and Provincial Bank. Early 15th century.
Donor, Miss Money. 4870.24

See "Essex County Standard," May 3, 1924.

Tall bottle-shaped Costril of red ware, with red and white marbled glaze, height 11ins. English, 16th century. Purchased. 4873.24

For a similar Costril presented in 1922 see Report 1923, plate ix, page 22.

Lead Crest, a seven-headed Griffin on a torse, coloured and gilded. One of the crests of the Dacre or Barrett-Lennard family of Bellus. From the Hall at Belhus, near Aveley. Donor, Mr. W. C. Wells. 4875.24

Handle and neck of a large red ware Gotch with slip decoration, 15th century. Base of painted Delft ware Bowl, portion of Jar of ditto, part of plain white Unguent Pot, 17th century, fragment of Gres de Flandres ware, and three Bowls of tobacco pipes. All found on site of 49, High Street. Purchased. 4885.24

Small Iron Adze, waisted between head and blade, oval perforation for handle; length $4\frac{1}{4}$ inches. About 17th century. Found at White Colne. Donor, Miss Nina F. Layard, F.S.A. 4886.24

Iron Key with reniform bow, square stem and flat web with cruciform opening, the stem projects beyond the web and is then rounded in section. Found near St. Osyth Priory. 14th century. Donor, Mr. P. B. Brale. 4887.24

Piece of Wattle and daub walling and six split oak laths about 7ft. 6ins. in length, removed from premises in High Street during alterations. Donors, Messrs. Joslins Ltd. 4905-6.24

Leaden Cloth Mark with Royal Arms of Tudor period, found near Audley End. Deposited by the Essex Archaeological Society. 4914.24

Bronze object or mount resembling a cheek-piece of a horse's bit, found near where the Saxon brooch (3778.12) now in the Museum was found at Feering. Donor, Mr. H. E. Bacon. 4915.24

Jetton or Counting Token found near the Siege House, 15th century. Small bronze Buckle from a spur leather, probably 14th century. Donor, Mr. W. F. Baldwin. 4916-17.24

Leaden Seal Matrix of John ——— (?) with squirrel in centre. Find place unknown. Donor, Mr. H. J. Cape, M.A. 4918.24

Iron Pipe Light maker consisting of a shallow trough with blade set obliquely across, against which a narrow spline of soft wood is pressed, pushing off shavings which curl and fall at side, and box of shaving pipe lights. From an old inn at Aveley. Farly 19th or perhaps 18th century. Purchased. 4923.24

Remains of coloured Wall Stencilling from a room at Lower Dairy Farm, Little Horkesley. Probably 17th century. Donor, Major W. F. Dick.

Fusee with glass stem in common use by smokers about 1860. Donor, Mr. R. Longstaff. 4933.24

Casts of Fourteen Essex Ecclesiastical Seals, including Colchester, Dunmow, Pleshy, Waltham, Wix, Coggeshall, Walden, Barking, Tiptree, Leigh, and Blackmore. Deposited by the Essex Archæological Society. 4937.24

Oval tin Tinder Box with lid, an unusual form. Purchased. 4942.24

Iron Fork used by cottagers for pushing furze or faggots into the bakehouse furnace. Length, including short wooden handle, 5ft. 4 $\frac{3}{4}$ ins. Probably late 18th century. Donor, Mr. C. R. Finch. 4943.24

Semi-circular Drain Pipe of red ware with perforations along sides. Length, 12 $\frac{1}{2}$ ins. Portion of larger Tile of same type. Donor, Master E. J. Rudsdale. 4946.24

A complete example with flat base tile from Coggeshall is in the Museum Collection.

Brass Spur, rowell wanting, short stout pear-shaped acutely curved neck, curved shank with double strap-holes. About period of Charles I. Found by donor on shore of River Colne, East Mersea. Donor, Mr. I. G. A. Dunn. 4948.24

Sympalmograph with electrical attachment, made by Mr. George Joslin. Donor, Mr. Councillor A. M. Jarmin, F.R.Hist.S. 4953.24

Large Triangular moulded Brick, found at Rivenhall, late 15th or 16th century. Donor, Mr. Ernest Bott. 4955.24

- Casts of Six Essex Ecclesiastical Seals, including Blackmore, Stratford, Thorby, Tilty, and Wix. Deposited by the Essex Archaeological Society. 4857.24
- The Street Mirror formerly attached to the balcony on first floor of donors' premises in High Street. Donors, Messrs. Moy Ltd. 4959.24
- Husbandman's Harvest Keg in oak. (Plate VIII.) Leather Shot Bandalier. Donors, the Misses Johnson. 4964-65.25
- Original Box of Fusees (Roche & Co., Braided Lights). Donor, Mr. Richard Hardy. 4977.25
- Antique Jig-Saw Puzzle in box, carved ivory clamp with pincushion combined. Donors, Executors of the late Miss Hellen. 4978-9.25
- Large iron Key with reniform bow and flat web with cross-like perforation, found by donor when a child on St. John's Green, 14th century. Donor, Mrs. Adelaide Cater. 4981.25
- Silver High Constable's Staff, presented to donor's grandfather for suppression of riots in South portion of Tendring Hundred in 1830. Donor, Mr. Richard Hardy. 4982.25
- Wooden Dish 14ins. in diameter; Wooden Platter 8½ins. ditto; Pewter Plate 9½ins. ditto. 18th or early 19th century. Donor, Mr. James Whitwell. 4983-5.25
- Small stone ware Drug Pot, imperfect, 17th century. Donor, Mr. Councillor A. M. Jarmin, F.R.Hist.S. 4987.25
- Small square-bodied Bottle of green glass. 18th century. Donor, Mrs. Hunnable. 4993.25
- Base of Tyg of black glazed ware with perforation in centre of base. Either Shropshire or Stock (Essex) ware. 17th century. Donor, Dr. Philip Laver, F.S.A. 4994.25
- Medieval Worked Stone fragments found during rebuilding of donor's premises in George Street, and two Oak Corner Posts from same site. Donor, Councillor A. M. Jarmin, J.P., F.R.Hist.S. 4996-7.25

PLATE VIII.



T. C. Gall, photo.

No. 4964.25, page 20.

Fragment of antique Wallpaper from an old wall at the Colchester Gas Company's Office, High Street. 17th century. Donor, the Chairman, Alderman Gurney Benham, F.S.A. 4999.25

Old Flint Lock for a gun, and a Bleeding Knife. Donor, Mr. W. Bicknell. 5013-14.25

COINS, MEDALS, ETC.

Farthing of William and Mary, 1694. Halfpenny, George I., 1720; ditto, George III. 1771; ditto, 1806, ditto, 1807. Farthing, George IV., 1822; ditto, 1827. Halfpenny, William IV., 1831; ditto, Victoria, 1850. Fourpennybit, ditto, 1844. Walton Copperas Token, 1736. Trade Token, Thomas Renolds, Colchester, 17th century. "Third Brass" of Constantine the Great, *Rev. SECVRITAS REIPVBLICAE*. Donor, Mr. Alfred Chapman. 4861.24

Bronze Quinarius of Theodora, wife of Constantine Chlorus (Goodacre, Bronze Coinage of the late Roman Empire, No. 2.) Purchased. 4889.24

"Second Brass" of Allectus, (*Rev. PAX AVG*), and "Second Brass" of Nero, (*Obv.* Victory advancing to left). Silver Penny of Henry III., London Mint. "Second Brass" of Vespasian, Exergue, **PROVIDENT**. "Second Brass" of Domitian, *Rev. MONETA AVGVSTI*. "Third Brass" of Carausius, *Rev. PAX AVG*; ditto, *Rev. VIRTVS AVG*; ditto, Allectus, *Rev. A Galley, VIRTVS AVG*; ditto, Carinus, *Rev. PIETAS AVG*; ditto, Tetricus, *Rev. MILITVM*; Bronze Quinarius of Helena, *Rev. PAX PUBLICA* (Goodacre No. 4). "Third Brass" of Constans, *Rev. GLORIA EXERCITVS* (Goodacre No. 10). Purchased. 4890-4901-24

"Third Brass" of Constantine I. *Rev. SOLI INVICTO COMITI*, found in donor's garden. Donor, Alderman Coats Hutton, J.P. 4909-25

"Third Brass" of Constantine, *Rev. VRBS ROMA*, found at Dedham. Donor, Mr. John Simson 4912.24

Ancient British Coin of copper plated with silver. *Obv.* indistinct. *Rev.* Horse to r. with various ornaments in field. Formerly in the Pollexfen Collection. Purchased. 4928.24

See "British Numismatic Journal," Vol. I., page 356, No. 10, and plate facing page 354, No. 10.

- Ancient British Gold Quarter Stater of uninscribed series with head of Apollo on *obv.* *Rev.* Horse over wheel to r. and undeterminate object above. Found on beach at Clacton. (? Evans B.14 var.) Purchased. 4936.24
- Denarius of Tiberius, imperfect. *Rev.* Livia or Pax seated to r **PONTIF MAXIM.** See Mattingley and Sydenham, p. 103. II. plate v., 79. Found in donor's garden. Donor, Councillor C. C. Smallwood. 4947.24
- Denarius of Elagabalus. *Rev.* **CONCORDIA MILIT.** Soldiers with Standards. Donor, Mr. A. E. Purkiss. 4956.24
- "Second Brass" of Diocletian. *Rev.* **GENIO POPVLI ROMANI.** Fine state. Found in donor's garden. Donor, Dr. A. N. Fell. 4958.24
- Half-crown of George IV., 1828. Donor, Mr. V. E. de B. Crawshay. 4960.25
- Eighteenth Century Token. *Obv.* "King and Constitution," 1794. *Rev.* Chelmsford Shire Hall. Ditto Suffolk Yeomanry, First Troop, 1794. *Obv.* Mounted Soldier galloping to l. Deposited by the Essex Archæological Society. 4962.25
- Farthing of Charles II. "Carolus a Carolo" Donor, Mr. H. Cook. 4963.25
- "Second Brass" of Vespasian, *Rev.* Eagle on globe. Donor, Mr. S. G. Colinese. 4967.25
- Penny, George III., 1797. Halfpenny, ditto, 1807. Jersey Halfpenny, Victoria, 1894. Cyprus Farthing, 1905. Penny, South African Republic, 1878. Macclesfield Token, 1791. White Metal copy of Spade Guinea. Donor, Mr. H. Byrne. 4968.25
- "Third Brass" of Decentius. Plugged Halfpenny of William III. Donor, Mr. A. W. Frost. 4873-4.25
- Rose Farthing, James I. or Charles I. Donor, Mr. H. C. Keys. 4995.25
- "Third Brass," Constantine I. (Goodacre, III.) Three-farthing piece, Elizabeth (Hawkins 449). Donor, Mr. G. Smith. 5015-16.25

PHOTOGRAPHS, LANTERN SLIDES, ETC.

- Two Picture Postcards of Doorway at Prittlewell Priory
Donor, Mr. W. Pollitt. 4792.24.

- Catalogue of Sale of Furniture and Law Library of Mr. Neville, Solicitor, by Mr. Cook, June 4th and 5th, 1884. Catalogue of Sale of Furniture, etc., of Mrs. Feedham, Woolvack Inn, by Mr. Garrard, April 6th, 1886. Donor, Mr. G. C. Brown. 4877-78.24
- Four Photographs of Early Iron Age Potsherds, found at Wisley, Surrey. Donor, Dr. Eric Gardner, F.S.A. 4910.24
- Five Lantern Slides, viz., Castle Wall (2), Lexden Tumulus (2), Cloth on Bronze Age Potsherd (1). Donor, Corporation Publicity Committee. 4945.24
- Lantern Slide of Early form of House with "crucks" at Didbrook, Glos. Donor, Mr. Harrington Lazell. 4954.24
- Six Lantern Slides of Local Antiquities. Donor, Corporation Publicity Committee. 4998.25
- Sparrow's Survey of the Antient Town and Borough of Colchester, **MDCCLXVII**. Mounted and framed. Donors, Exors. of late Mr. A. K. Francis. 5016A.25

ADDITIONS TO MUSEUM LIBRARY.

From 1st April, 1924, to 31st March, 1925.

- The Naturalist, April 1924. Donor, Mr. Thos. Sheppard, M.Sc. L.341
- Notes on Some Early Crucifixes. By Nina F. Layard, F.L.S. (Reprint.) Donor, the Author. L.342
- The Pleistocene Deposits * * * at Foxhall Road, Ipswich By P. G. Boswell, A.R.C.S., D.Sc. and J. Reid Moir. (Reprint.) Donor, Mr. J. Reid Moir. L.343
- Man and the Ice Age. By J. Reid Moir. Donor, the Author. L.344
- Proceedings of the Royal Irish Academy, The Sierra Leone Cannibals, By Major R. G. Berry, A.S.C. Donor, the Author. L.345
- The Coals of South Wales. By F J. North, D.S.C., F.G.S. (National Museum Pamphlet No. 1.) Donors, the Author and Director of Museum. L.346
- Bulletin of the Rhode Island School of Design. (Providence U.S.A.) Vol. XII, parts 2, 3, 4.; Voi. XIII, part 1. Donor, the Director. L.347, 372, 388, 421
- Dutch Tiles (The Van den Bergh Gift, South Kensington Museum) By Bernard Rackham. Purchased. L.350

- The Early Iron Age Inhabited Site at All Cannings Cross Farm,
Wiltshire. By M. E. Cunningham. Purchased. L.351
- Manuel d'Archéologie Romaine. Par R. Cagnat et V. Chapot.
2 Vols. Donor, Captain H. E. Laver. L.357
- Roman York. By Gordon Home. Purchased. L.361
- Bulletin of Celtic Studies. Vol. I, part 1 Purchased. L.364
- Bronze Age Urns of Surrey. By Eric Gardner, M.B., Cantab.,
F.S.A. (Reprint). Donor, the Author. L.366
- On Roman Roads in Essex. Second Supplement. By Miller
Christy, F.L.S. (Reprint) Donor, the Author. L.368
- Segontium and the Roman Occupation of Wales. By R. E.
Mortimer Wheeler, M.C., D.Litt., F.S.A. Donor, the Author.
L.369
- British Brooches of the Backworth Type in the Blackgate
Museum, Newcastle-upon-Tyne. By Parker Brewis, F.S.A.
(Reprint). Donor, the Author. L.370
- Urgeschichtlicher Anzeiger, Pre-historic Review, Vol. I, parts 1
and 2. By Subscription. L.371 and 423
- A Map of Roman Britain. Ordnance Survey, 1924. Purchased
L.375
- Bulletin of the Royal Ontario Museum of Archaeology,
University of Toronto, December 1923. Donor, the Art
Adviser, L.377
- The Daily Life of the Greeks and Romans. By Helen McCless,
Ph. D. (Metropolitan Museum of Art, New York). Purchased
L.378
- The Bronze Sword in Great Britain. By W. Parker Brewis,
F.S.A. (Reprint). Donor, the Author L.381
- The Essex Naturalist, Vol. XXI. parts 1 and 2. Donor,
Council of the Essex Field Club. L.382, L.424
- Archæologia. Vol. LXXIII., 1922-1923, Purchased.
L.383
- Journal of Roman Studies. Vol. XII., part 2. 1922. By
Subscription. L.384
- Excavations at East Grinstead, Wiltshire. By Haywood
Sumner, F.S.A. Donor, the Author. L.386

- Roman Britain in 1929. By M. V. Taylor and R. G. Collingwood. (Reprint.) Donors, the Authors. L.387
- Brighton and Hove Archaeologist, No. 2, 1924. Donor, Dr. Eliot-Curwen, M.A., F.S.A. L.390
- The Antiquaries Journal. Vol. IV., 1924. By Subscription. L.391
- The Roman Camps at Cawthorn, near Pickering, Preliminary Report, 1923. By F. Gerald Simpson, Hon. F.S.A. Scot. Donor, Dr. John L. Kirk. L.392
- Catalogue of Sale by Messrs. Christie, Manson and Woods, of the Rosehill Collection of Pre-historic and Ethnological Objects the Property of the late Earl of Northesk, July 1924. Illus. Donor, Captain H. E. Laver. L.393
- Catalogue of Sale by Messrs. Sotheby, Wilkinson and Hodge of the Pre-historic Antiquities, chiefly from Ireland, formed by W. J. Knowles, Esq., M.R.I.A., November, 1924. Illus. Donor, Captain H. E. Laver. L.394
- Hull Museum Publications, No. 138. Donor Mr. Thomas Sheppard, M.Sc., etc. L.395
- The Date of the Traprain Law Treasure Trove and of the Destruction of Wroxeter. By Professor Sir William Ridgeway (Reprint). Donor the Author. L.387
- The Methods of Manhardt and Sir J. G. Frazer. By Sir William Ridgeway (Reprint). Donor the Author. L.398
- Archæology made Easy. By Walter Cozens and Robert Harold Goodsall, A.R.I.B.A., etc. Purchased. L.399
- The Lake Villages of Somerset. By Arthur Bulleid, L.R.C.P., F.S.A. Donor, the Author. L.400
- The "What to see" Guide to the Russell-Cotes Art Gallery and Museum, Bournemouth. Donor, Mr. R. Quick (Curator). L.403
- Bulletin of the Russell-Cotes Art Gallery and Museum, Bournemouth. Vol. III and Vol. IV, No. 1. Donor, Mr. R. Quick (Curator). L.402
- The Governors of Britain from Claudius to Diocletian. By Donald Atkinson (Reprint). Donor, the Author. L.405
- Flint Excavation Report. By Donald Atkinson and M. V. Taylor. (Reprint.) Donor, Mr. Donald Atkinson, B.A. L.406

- Illustrated Catalogue of Specimens from Pre-historic Interments found in the North-East of Scotland. By R. W. Reid, M.D., F.R.C.S. Donor, the Author. L.407
- The Benwell Altar, dedicated to the God Antenociticus by the 1st Cohort of the Vangiones. By George R. B. Spain, C.M.G., F.S.A. (Reprint.) Donor, the Author. L.408
- Fifty Years of Pioneer Work in Woolwich. By C. H. Grinling. Donor, the Author. L.411
- The Connoisseur, March 1925. (Contains Article by donor on Church Chests, including one at Great Bentley, Essex). Donor, Mr. Fred Roe, R.I. L.414
- Horniman Museum Handbook. The Evolution of the Domestic Arts. Part I. Donor, the Clerk of the London County Council. L.415
- Belfast Municipal Museum. Quarterly Notes, No. XLIX. By Arthur Deane, Curator. Donor, the Author. L.418
- A Further Report on the Earthworks at Charlton, London, S.E. By F. C. Elliston-Erwood. (Reprint.) Donor, the Author. L.420
- Die Tumuli im Feichtenboden von Josef Szombathely. By Exchange. L.422
- The Races of England and Wales. By H. J. Fleure, D.Sc. Purchased. L.425
- Journal of Roman Studies. Vol. XIII., 1923. By Subscription. L.426
- Natural History. Journal of American Museum of Natural History. Vol. XXIV. Donors, the Council of the Museum. L.427
- British Numismatic Journal. Vol. XVI., 1921-22. By Subscription L.428
- The Museums Journal. Vol. XXIII., 1923-24. By Subscription. L.429
- Spink's Numismatic Circular. Vol. XXXII. By Subscription. L.430
- Ancient Earthworks and Camps of Somerset. By Ed. J. Burrow, F.R.G.S. Donors, the Misses Candler. L.431

List of Donors.

Atkinson, D. (Manchester)
 Bacon, H. E. (Feering)
 Baldwin, W. F.
 Baugham, R. D.
 Benham, Alderman W. G. (Chairman)
 Berry, Major R. G. (Ireland)
 Bicknell, W. (Tiptree)
 Bond, E. T. (Braintree)
 Bott, E. (Rivenhall)
 Brewis, Parker (Newcastle-on-Tyne)
 Brown, G. C.
 Brown, — (Braintree)
 Bucke, P. B.
 Bulleid, Dr. A. (Midsomer Norton)
 Byrne, H.
 Candler, The Misses (Detroit U.S.A.)
 Cape, H. J.
 Cater, Mrs. Adelaide
 Chapman, Alfred
 Christy, Miller (London)
 Cook, H. (Wivenhoe)
 Colchester, Mayor of
 Colchester Manufacturing Co.
 Colinese, S. G. (Wivenhoe)
 Collingwood, R. G. (Oxford)
 Corporation Publicity Committee
 Crawshay, R. V. E. de B. (Kelvedon)
 Deane, A. (Belfast)
 Dick, Major W. F. (Little Horkesley)
 Dunn, I. G. A. (East Mersea)
 Eliot-Curwen, Dr. (Hove)
 Elliston-Erwood, F. C. (Charlton)
 Essex Field Club, Council of (Stratford, E.)
 Fell, Dr. A. N.
 Finch, C. R. (Great Baddow)
 Francis, A. K., Exors. of the late
 French, E. J. (West Mersea)
 Frost, A. W.
 Gardner, Dr. Eric (Weybridge)
 Grinling, C. H. (Woolwich)
 Gurney, F. J. (Earls Colne)
 Hardy, R.
 Hellen, Exors. of late Miss
 Hitchcock, C.

Hutton, Alderman Coats
 Hunnable, Mrs.
 Jarmin, Councillor A. M.
 Johnson, the Misses
 Joslins, Ltd.
 Keys, H. C.
 Kitchener, Mrs. (Hornchurch)
 Kirk, Dr. John L. (Pickering)
 Laver, Dr. P. G.
 Laver, Capt. H. E.
 Layard, Miss N. F. (Kelvedon)
 Lazell, H.
 Longstaff, R.
 May, J. W.
 Moir, J. Reid, (Ipswich)
 Money, Miss
 Morgan, T. F. (Castle Hedingham)
 Moy & Co., Ltd.
 Mumford, G.
 North, F. J. (Cardiff)
 Parker, Robert (Bristol)
 Pollitt, W. (Southend)
 Purkiss, A. E.
 Quick, R. (Bournemouth)
 Reid, Dr. R. W. (Manchester)
 Ridgeway, Professor Sir W. (Cambridge)
 Roe, F. (London)
 Rowe, L. Earle (Rhode Island, U.S.A.)
 Rowland, Dr. P.
 Ruddale, E. J.
 Sadler, Miss E.
 Sheppard, Thomas (Hull)
 Simpsom, B. J.
 Simson, John
 Smallwood, Councillor C. C.
 Smith, Francis (White Colne)
 Smith, G.
 Spain, Colonel G. R. B. (Newcastle-on-Tyne)
 Sumner, H. (Fordingbridge)
 Sutton, T. (London)
 Taylor, M. V. (Oxford)
 Turner, A. (West Mersea)
 Wells, W. C. (South Benfleet)
 Wheeler, Dr. R. E. M. (Cardiff)
 Whitwell, James
 Winch, F. C. & Co.

Depositors.

Council of the Essex Archæological Society.

Reports.

Reports from April 1st, 1924, to March 31, 1925.

Birmingham City Museum and Art Gallery.
 Bootle, Free Library and Museum.
 Bournemouth, Russell-Cotes Art Gallery and Museum.
 Bucks, Architectural and Archæological Society.
 Cambridge, Fitzwilliam Museum.
 Cambridge, Friends of the Fitzwilliam Museum.
 Cardiff, The National Museum of Wales.
 Carmarthenshire, Antiquarian Society and Field Club.
 Chester, Society of Natural Science, etc. Grosvenor Museum.
 Congress of Archæological Societies, Earth Works Committee.
 Grantham, Public Library and Museum.
 Grays, Public Library and Museum.
 Hove, Public Library and Museum.
 Ipswich, Borough Museum.
 Manchester, Manchester University Museum.
 New York, American Museum of Natural History.
 Northampton, County Borough Museum.
 Norwich Castle Museum.
 Norwich Castle Museum, Friends of the
 Oxford, Ashmolean Museum.
 Salisbury, South Wilts and Blackmore Museum.
 Southend-on-Sea, Public Library and Museum.
 Spalding, Gentlemen's Society.
 Sydney, N.S.W. Technological Museum.
 Taunton County Museum.
 Warrington Museum.
 Washington, U.S.A., National Museum.
 Whitby Literary and Philosophical Society.
 Wisbech, Museum.
 Yorkshire Philosophical Society, Yorkshire Museum.

*N.B.—Curators of Museums will much oblige by forwarding
 their reports in exchange as issued.*

FORMS OF BEQUEST.

I bequeath out of such part of my personal Estate as may by Law be bequeathed for such purposes, to the Mayor, Aldermen and Burgesses of the Borough of Colchester, the sum of

free from Legacy duty, for the Benefit of the Corporation Museum of Antiquities, to be expended in such a way as they may deem expedient; and I direct that the receipt of the Treasurer for the time being of the said Borough shall be an effectual discharge for the same Legacy.

I bequeath*

*ANTIQUITIES
OR OTHER

OBJECTS. to the Mayor, Aldermen and Burgesses of the Borough of Colchester (Free from Legacy Duty, which duty, I direct shall be paid out of my pure personalty) for the benefit of the Corporation Museum of Antiquities, either for Exhibition, or for such other purpose as they may deem expedient: and I further direct that the receipt of the Town Clerk for the time being of the said Borough shall be an effectual discharge for the same Legacy.

Publications.

The following publications can be obtained at the Museum, or will be forwarded by post on application; *postage extra.*

ESSEX BRONZE IMPLEMENTS AND WEAPONS in the
Colchester Museum. By *Charles H. Butcher*. 12 pp., 6
plates 1/-

MORANT CLUB REPORT, AN INSULA OF ROMAN
COLCHESTER. By *R. E. M. Wheeler*, M.C., M.A., D.Lit.
41 pp., 2 plans, 11 illustrations 1/-



Picture Post Cards

Of the Castle and various Antiquities in the Museum are on Sale
at the Museum, price One Penny each, or in Sets as
under:—

Views of the Castle	Set of 12—10d.
Antiquities—Bronze and Iron Ages	„ 10— 9d.
„ Romano-British Period	„ 14— 1/-

BOROUGH OF COLCHESTER.

The Colchester Museum of Local
Antiquities

(FOUNDED 1848).



(OBVERSE OF BOROUGH SEAL, 15TH CENTURY).

REPORT

OF THE

Museum and Muniment Committee

For the Year ended 31st March, 1926.

Price Sixpence.

Borough of



Colchester.

THE
Corporation Museum
OF
LOCAL ANTIQUITIES
(FOUNDED 1846).

REPORT
OF THE
Museum & Muniment Committee

For the Year ended 31st March, 1926.

PRICE: SIXPENCE.

COLCHESTER :
WILES AND SON, TRINITY STREET,
1926.

Committee and Officers.

COMMITTEE, 1925-26.

Alderman W. G. BENHAM, F.S.A., F.R.Hist.S., J.P., C.C.,
Chairman.

Councillor A. M. JARMIN, F.R.Hist.S., J.P.,
Deputy-Chairman.

THE RIGHT WORSHIPFUL THE MAYOR
(Councillor A. W. PIPER, J.P.).

Alderman WILSON MARRIAGE, J.P., C.C.

Alderman E. A. BLAXILL, J.P.

Councillor Mrs. C. B. ALDERTON, J.P.

Councillor Lieut.-Colonel R. A. COCKBURN, O.B.E.

*The following Members represent the
Essex Archæological Society :*

Mr. PHILIP G. LAVER, F.S.A.

Mr. DUNCAN W. CLARK, A.R.I.B.A.

Rev. G. MONTAGU BENTON, F.S.A.

CURATOR.

ARTHUR G. WRIGHT.

ASSISTANTS.

W. F. BELL.

B. J. SIMPSON.

The Corporation Museum.

To the Mayor and Council of the Borough of Colchester.

LADIES AND GENTLEMEN,

We beg to submit our Report on the Corporation Museum for the year ended 31st March, 1926.

The total number of visitors to the Museum during the year was 41,320.

Many valuable and interesting gifts have been made to the Museum, amongst the most important being an unusually fine Burial Group of the Roman period found on the Abbey Field and presented to the Museum by H.M. Secretary of State for War. Mr. Harrington Lazell has given a remarkably fine Mosaic Pavement found in the garden of No. 18 North Hill, which has been relaid in sections for convenience of storing until space can be found for its reassembling and exhibition; the centre panel only is on view in the Well Room. Captain H. F. Jackson is to be thanked for a fine group of Pedestalled and other vessels of Early Iron Age date, found in his grounds at Creeksea Place. Mr. Francis Smith has again presented several Urns from the Late Bronze Age Cemetery at White Colne. A rare type of "Samian" Flagon found at Heybridge is the gift of Mr. Lewis Belsham. Major L. de H. Larpent has given a Bronze Spear Head found in his garden; Masters Rudsdale & Farmer have contributed three interesting and early Burial Groups found by themselves, and to Dr. Philip Laver we are indebted for two Burial Groups, a Lamp and a number of Medieval Vessels and other gifts.

Amongst the late antiquities of special interest are examples of Early Needlework given by Mrs. Bradhurst, Mrs. Walter Grimston and Miss J. R. Sprague; a "Geared Facile" Bicycle of 1880 from Mr. Walter Fox; example of coloured Stencil Work on "Wattle and Daub" Walling from the International Tea Company Stores, Ltd.; an iron Hake or Pot-crane from Mr. Vinter and an Hour Glass from Mr. Israel Saunders.

A new "island case" has been placed in the South-East Recess to replace the old desk case, and it is hoped to add another in the course of the coming year; in these it is proposed to arrange the West Lodge Burial Groups which were presented to the Corporation by the late Mr. John Taylor in 1848-9.

As a result of Conference between members of the Essex

Archæological Society and of the Colchester Town Council, it was agreed by the Colchester Town Council on May 5th, 1926, that the name and title of the Museum shall be in future "The Colchester and Essex Museum," and that a notice be placed in the Museum bearing the words: "This Museum comprises the united collections of the Colchester Corporation and the Essex Archæological Society." It was also agreed:

- (1) That the collections of the two bodies be in future amalgamated permanently as one collection under the Museum, etc., Committee, and that all future accessions be entered in one book, instead of separately as at present.
- (2) That the Library of the Society remain the property of the Society, and at their disposal, it being hoped with regard to the Library that the Town Council may be able, at a later date, to suggest suitable arrangements for its better housing.
- (3) The amalgamated collection as a whole, independently of the Library and Manuscripts, to be vested in the Corporation who will be responsible for its housing, care and preservation, the immediate control remaining, as stated above, in the Museum and Muniment Committee on which the Society would be permanently represented.
- (4) That no object which has belonged to the Essex Archæological Society be alienated without consent of the Council of the Society.
- (5) That the representation of the Society on the Museum and Muniment Committee be not less than one-third of the whole Committee.
- (6) That the existing arrangements for contribution by the Society to the salary of the Curator be continued.

The Committee greatly regret that this Annual Report will be the last to be issued by the present Curator (Mr. A. G. Wright), who retires on October 1st, 1926, under the new superannuation regulations adopted by the Colchester Town Council. Mr. A. G. Wright has been Curator for 24 years, and the Committee desire to place on record their grateful and hearty appreciation of his valuable and loyal service to the Museum. During his tenure of office the various collections have been completely re-arranged and labelled and the exhibits have more than quadrupled in number. Mr. Wright has given the Museum the benefit of his great learning and long experience, and his care and ability and his constant courtesy have been very highly appreciated by the Committee and by the many visitors to the Museum. It is noteworthy that in 1902, the year in which Mr. Wright took office, the number of visitors was 20,887; in the year ending March 31st, 1926 (as already stated), the total was 41,320.

W. GURNEY BENHAM, *Chairman.*
ARTHUR G. WRIGHT, *Curator.*

Visitors to the Museum.

			1925-26.	
			Days open.	Attendance.
April	26	3772
May	26	2936
June	26	4246
July	27	4197
August	26	8787
September	26	5274
October	27	3188
November	25	1610
December...	25	1593
January	26	1921
February	24	1768
March	27	2028
<i>Total</i>			311	41320

BANK HOLIDAY ATTENDANCES.

Easter Monday, 13th April, 1925	...	526
Whit Monday, 1st June, 1925	...	615
August Monday, 3rd August, 1925	...	412
26th December, 1925	Closed

The total number of Visitors for the year ending March 31st, 1903, was 20,887; 1904, was 27,039; 1905, was 28,408; 1906, was 29,588; 1907, was 31,078; 1908, was 30,875; 1909, was 29,842; 1910, was 34,453; 1911, was 29,423; 1912, was 27,298; 1913, was 32,149; 1914, was 29,564; 1915, was 49,689; 1916, was 44,810; 1917, was 46,437; 1918, was 47,610; 1919, was 51,496; 1920, was 46,144; 1921, was 39,639; 1922, was 37,947; 1923, was 42,860; 1924, was 43,004; 1925, was 40,419.

The Colchester Museum

IS OPEN DAILY FROM

1st April to 30th September—10 a.m. till 5 p.m.

1st October to 31st March—10 a.m. till 4 p.m.

AND CLOSED ON

Sundays, Good Friday, and Christmas Day, and such other days as the Committee may order.

ADMISSION FREE.

It is urgently requested that any discovery of Archæological interest in the neighbourhood may be brought to the notice of either the Chairman or the Curator as early as possible.

The Curator will be pleased to give any information in his power and may be seen daily, Museum engagements permitting.

Postcards of many of the most important antiquities, and a new series showing the Castle from various points of view, may be obtained in the Museum at One Penny each.

Curator ... ARTHUR G. WRIGHT.

List of Additions to the Museum

BY GIFT AND PURCHASE

From the 1st April, 1925, to 4th May, 1926.

All the objects were found in Colchester unless otherwise stated.

STONE AND BRONZE AGES.

Base and fragments of an Urn of coarse reddish-brown ware, burnt black inside, with finger-tip impressions on top of rim. Late Bronze Age, about 900 to 500 B.C. Found at Blackheath, Fingringhoe. Donor, Mr. Mabbitt.

5024.25

See *Trans. Essex Arch. Soc. (N.S.)*, vol. xvii., p. 270.

A number of Flint Flakes, some with secondary working, from site of Bronze Age cemetery, White Colne. Donor, Mr. F. J. Gurney.

5035.25, 5182.26

Nine worked Flint Flakes and Scrapers, found by donor on Wolves Farm, Tendring. Neolithic. Donor, Mr. Adam Chalmers.

5051.25

Polished Flint Axe. Length, $4\frac{1}{8}$ ins. Found about 40 years ago at Great Bromley. Neolithic or Early Bronze Age. Purchased. (Plate I., fig. 1.)

5061.25

Cutting end of Polished Flint Axe, stained ochreous-brown. Length $4\frac{1}{8}$ ins. Found on bank of river Lea, Bishops Stortford, 1880. Donor, Mr. H. H. Halls.

5071.25

Butt end of Polished Axe of grey flint, stained ochreous-brown, has been battered and re-chipped at fracture. Length, $4\frac{1}{8}$ ins. Found two miles north of Felsted, 1886. Donor, Mr. H. H. Halls.

5072.25

Chipped Adze of grey flint, with portions of original crust on one face. Length, $3\frac{1}{8}$ ins. Found at Hackney Downs, 1879. Neolithic. Donor, Mr. H. H. Halls.

5073.25

The above three implements were formerly in the collection of the late Rev. J. W. Kenworthy.

Bronze Spear-head with long leaf-shaped blade with bevelled edges, the portion of the socket below the blade is wanting, but the hollow extends nearly to the point and contained a portion of the wooden shaft. Present length, 6 $\frac{5}{8}$ ins. Found in donor's garden at The Moat, Copford. Late Bronze Age, about 900 to 500 B.C. Donor, Major L. de H. Larpent, O.B.E. (Plate I., fig. 3.) 5111.25

Cf. Evans, Ancient Bronze Implements, fig. 382.

Polished Axe of grey flint with taper butt; the cutting edge has been re-chipped but not ground. Length, 5 $\frac{3}{8}$ ins. Found in Colchester. Neolithic or Early Bronze Age. Donor, Dr. Philip G. Laver, F.S.A. (Plate I., fig. 2.) 5137.25

Fragments of a Late Bronze Age Urn with finger-tip impressions. Found on site of a gravel pit at Bocking Church Street. About 900 to 500 B.C. Donor, Mr. Edgar T. Bond. 5163.25

Forgery of a Polished Axe of grey flint, made about forty years ago. Length, 6 $\frac{7}{8}$ ins. Donor, the Rev. William C. Hall. 5140.25

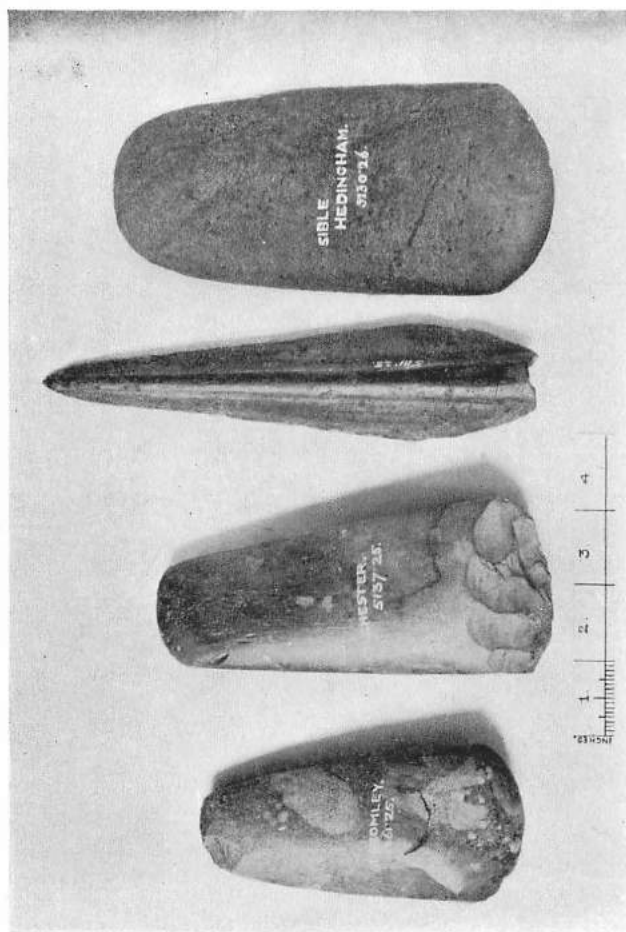
Cinerary Urn (Abercromby, type 4) of coarse reddish-brown ware, with narrow cordon of finger-tip impressions about 3ins. below the brim, the rest of the urn partly covered by finger-tip impressions. Present height 9 $\frac{1}{2}$ ins., mouth 11ins., base wanting. About 900 to 500 B.C. From Late Bronze Age Cemetery, White Colne. Donor, Mr. Francis Smith. 5165.26

Small Cinerary Urn, same type, of coarse reddish-brown ware with row of finger-tip impressions 1 $\frac{1}{2}$ ins. below brim, which is flattened on top, rest of urn plain. Height 9ins., mouth 8ins., base 6ins. Partly restored. From Late Bronze Age Cemetery, White Colne. Donor, Mr. Francis Smith. 5166.26

Half of a large Cinerary Urn, same type, of coarse reddish-brown ware, plain. Present height 13ins., base 7 $\frac{1}{2}$ ins. From Late Bronze Age Cemetery, White Colne. Donor Mr. Francis Smith. 5167.26

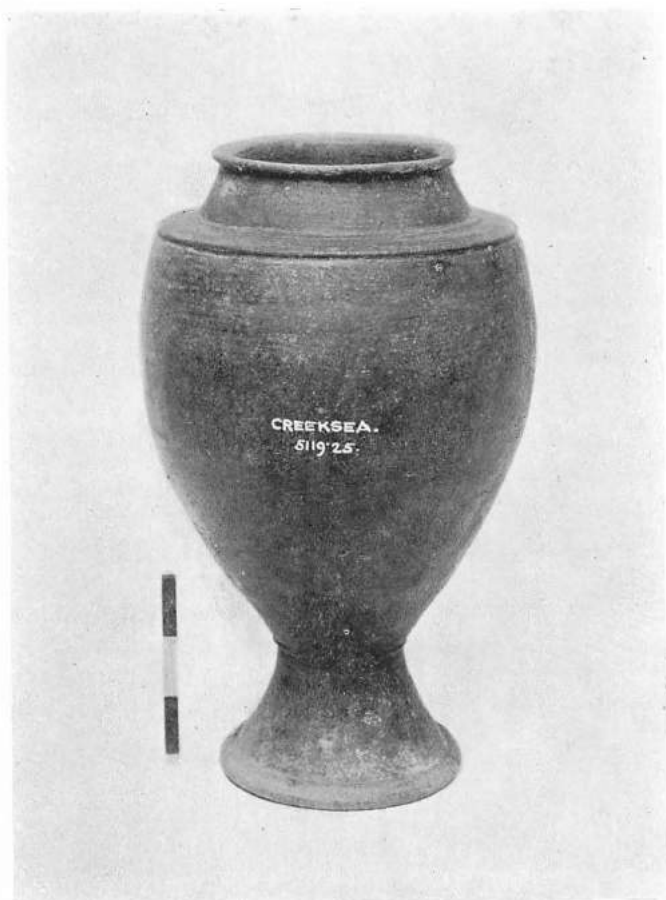
Half of a large Cinerary Urn, same type, of coarse brick-red ware with admixture of large grit, slightly raised cordon of finger-nail impressions 4 $\frac{1}{2}$ ins. below brim, which is flattened on top leaving a flange on either side. Present

PLATE I.



T. C. Gall, photo.

Nos. 5061, 5111, 5137 25; 5230 26. Pages 7, 8, 9.



T. C. Gall, photo.

height $6\frac{1}{2}$ ins., mouth 13ins. Partly restored. From Late Bronze Age Cemetery, White Colne. Donor, Mr. Francis Smith. 5168.26

For similar Urns from same cemetery see Annual Report, 1925, plates i.-vii.

A number of fragments of Cinerary Urns from Late Bronze Age Cemetery, White Colne. Donor, Mr. Francis Smith. 5196.26

Polished Stone Axe, length $5\frac{3}{4}$ ins. Found by donor on Cuckoo Farm, Sible Hedingham. Neolithic or Early Bronze Age. Donor, Mr. A. S. Evans. (Plate I., fig. 4.) 5230.26

cf. Evans, Stone Implements, fig. 48.

EARLY IRON AGE (LATE CELTIC).

Bowl of polished brown ware with wide mouth and base perforated with small holes, portion of bowl wanting. Probably used for straining honey. About 50 A.D. Donor, Dr. W. F. Corfield. 5041.25

Fragments of various early wares found with above. Donor, Dr. W. F. Corfield. 5041.25

Annular Bead of pale bluish-green glass. About 50 A.D. Donor, Dr. Philip G. Laver, F.S.A. 5048.25

The following group of Pedestalled and other vessels of La Tene III. period were found in getting gravel in a field adjoining Creeksea Place, and were given by Captain H. F. Jackson: Nos. 5119—5127.25.

Pedestalled Vase of dark brown ware with polished exterior, flat shoulder with beaded edge, and hollow cup-shaped base with beaded rim. Height $10\frac{1}{2}$ ins. (Plate II.) 5119.25

Pedestalled Vase of dark brown ware with polished exterior, short beaded neck, portion of lower part of cup-shaped pedestal wanting. Present height $8\frac{3}{4}$ ins. (Plate III., fig. 1.) 5120.25

Pedestalled Vase of dark brown ware with traces of polishing, short beaded neck, hollow cup-shaped base. Height $9\frac{1}{2}$ ins. (Plate III., fig. 2.) 5121.25

Small Pedestalled Bowl or Tazza of dark brown ware with polished exterior, upright concave sides with slight cordon, lower part of hollow base wanting. Diameter 5ins. (Plate III., fig. 5.) 5122.25

Large Pedestalled Bowl or Tazza of dark brown ware with polished exterior, the upright concave sides ornamented with three narrow cordons and flat base with beaded edge and narrow cordon surrounding base of pedestal the lower part of which is wanting, a similar cordon surrounding a boss on inside of base. Diameter $8\frac{3}{8}$ ins. (Plate IV.) 5123.25

A similar Tazza but with slightly curved base is in the Spitty Collection from Billericay, see Report, Colchester Museum, 1909, page 10, plate xi.

Bowl of brown ware with upright concave sides, narrow cordon round centre, convex base with low flat beaded foot grooved under. Height $4\frac{1}{8}$ ins., diameter $5\frac{3}{8}$ ins. (Plate III., fig. 6.) 5124.25

Smaller Bowl of dark brown ware with polished exterior, similar to last but with straighter sides. Height $3\frac{3}{8}$ ins., diameter 4ins. (Plate III., fig. 4.) 5125.25

Portion of Globular Bowl of brown ware with four shallow cordons and two zones of tooled chevrons; narrow concave beaded neck to receive a cover or lid. Height $5\frac{1}{2}$ ins., diameter $7\frac{5}{8}$ ins. (Plate III., fig. 3.) 5126.25

Similar Bowls with lids from Colchester, Lexden and Braintree, are in the Museum. See Reports: 1905, page 15, plate i.; and 1909, page 11, plate vi.

A Lid or Cover of light buff ware with short beaded projection in centre for lifting. Height $1\frac{3}{8}$ ins., diameter $4\frac{7}{8}$ ins. 5127.25

Similar Lids in brown ware accompanied a pedestalled Tazza and a Bowl, both found at Lexden. See Reports: 1909, page 12, plate vi.; and 1913, page 14, plate vi.

Fragments of a large Urn of grey-brown ware, found in donor's garden. About 1 to 50 A.D. Donor, Mr. Vernon E. Marshall. 5178.26



T. C. Gall, photo.

Small Jug of buff ware with traces of black colour-coating or glaze, trefoil-shaped mouth imperfect, handle wanting, found in mud of river Chelmer, at Chelmsford. Probably of Greek or Italian manufacture, about 200 B.C. Donor, the Rev. William C. Hall. 5181.26

Lower portion of vessel of dark brown ware with polished exterior, beaded foot and girth grooves. About 1 to 50 A.D. Found on Myland Hill. Donor, Dr. Philip G. Laver, F.S.A. 5189.26

ROMANO-BRITISH PERIOD.

Small Lamp of buff ware. Rim fragment with handle of a large Olla of buff ware. Bronze Key-hole Plate, enamelled in blue and yellow. Bronze Rivet with plate attached. All about 2nd century A.D. Donor, Dr. Philip G. Laver, F.S.A. 5017-20.25

Small Olla of dark grey-brown ware with re-curved rim; height 4ins., bulge 4ins., mouth 3ins., base 1 $\frac{7}{8}$ ins. Flask or Vase of light grey Belgic ware, mouth wanting, double cordon at junction of short curved neck and shoulder, beaded base with tooled circle under; present height 6ins., bulge 4 $\frac{1}{2}$ ins., base 2 $\frac{1}{8}$ ins. A similar Flask, with upper portion strongly offset from shoulder, plain base; height 6ins., bulge 5 $\frac{3}{8}$ ins., mouth 2 $\frac{1}{2}$ ins., base 2 $\frac{7}{8}$ ins. Late 1st century A.D. Found at Braintree. Donor, Mr. Alfred Hills, M.A. 5032-34.25

Inscribed circular Tessera of thin grey ware. Small glass Tessera, inlaid coloured glass. Donor, Mr. Israel Saunders. 5039-40.25

Bronze Pin with cavity in ball-shaped head for enamel or glass. Donor, Dr. Philip G. Laver, F.S.A. 5043.25

Burial Group, consisting of lower portion of large Olla of grey ware, containing cremated remains of a young child, a small glass Perfume Bottle; fragments of a small vessel of black-glazed ware; and a "Second Brass" Coin of Vespasian, *rev.* JVD AEA CAPTA. Donor, Master G. W. Farmer. 5045.25

Burial Group, consisting of the lower portion of a buff ware Olla containing burnt bones, and the upper portion of a Lagena of fine white ware, the neck encircled by incised lines. Early 2nd century A.D. Donor, Master E. J. Rudsdale. 5046.25

Fragment of buff ware Mortar with potter's stamp on rim, **SOLLVS**. Base of "Samian" Bowl with potter's stamp, **CATVLLVS**. Donor, Dr. Philip G. Laver, F.S.A. 5048-50.25

Burial Group, consisting of a large Olla of buff ware with mask on side and three loop handles under frilled rim, containing calcined human bones; a Flagon of buff ware; and a small Beaker of brown ware with tooled trellis-pattern on sides. 2nd century A.D. Donors, Masters Rudsdale and Farmer. (Plate V., fig. 3.) 5058.25

Bronze Statuette of Minerva, found some years ago, and formerly in the Vyse collection. Height $3\frac{1}{8}$ ins. Early Empire period. Purchased. 5062.25

Bronze Finger Ring with circular bezel engraved with a lion and wasp or bee. 2nd century A.D. Purchased. 5063.25

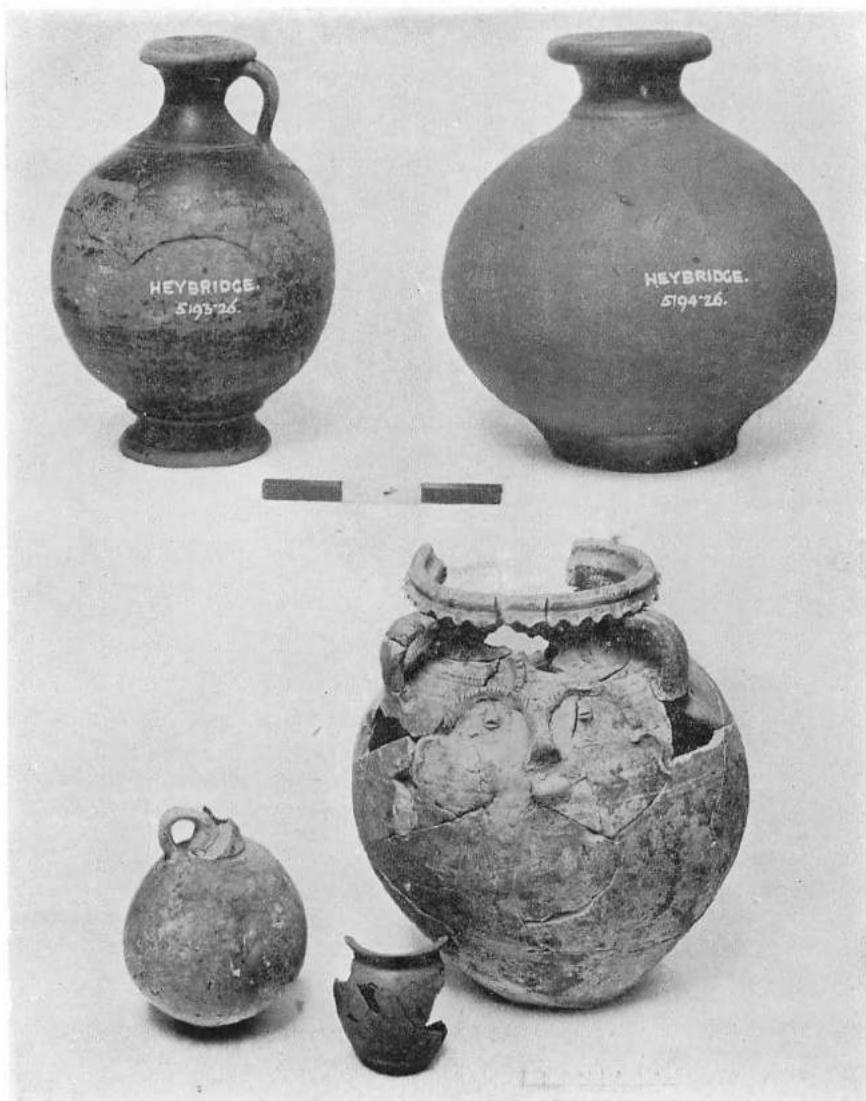
Bronze Finger Ring with oval bezel engraved with a radiated figure holding a globe, with crescent moon and star at side, probably **SOL**. 2nd century, A.D. Purchased. 5064.25

Neck of large Lagena of salmon-pink ware, handles wanting, 1st century, A.D. Neck of Flagon of buff ware with two-ribbed handle. 2nd century A.D. Donor, Dr. Philip G. Laver, F.S.A. 5083-4.25

Large bronze Needle bent and broken across eye, square section point. Probably 1st century A.D. Councillor A. M. Jarmin, J.P., F.R.Hist.S. 5089.25

Small carinated vase of soft brown ware with grey exterior, bevelled foot. Base fragment of large micaceous buff ware Olla. Portion of "Samian" Cup 33. Base fragment of Belgic platter with part of potter's stamp, **MO**, within rouletted circle. Portion of "Samian" Bowl 30 with panel decoration. Base fragment of "Samian" Bowl 29 with stamp, **IVCVNDI**. Portion of handle of glass Flagon. Portion of small Beaker of soft red ware with band of impressed dots and girth grooves. Base fragment of large buff Amphora. All probably 1st century A.D. Donor, Dr. Philip G. Laver, F.S.A. 5093-6, 5100-2, 5105-6.25

Small Millstone of Andernach lava, found on site of donor's premises in George Street. Diameter $6\frac{3}{4}$ ins., thickness $2\frac{1}{8}$ ins. Donor, Councillor A. M. Jarmin, J.P., F.R.Hist.S. 5128.25



T. C. Gall, photo.

Nos. 5058.25; 5193.4.26. Pages 12, 14.

- Portion of rim of "Samian" Bowl, 31, repaired with leaden plate and rivets in Roman period. Donor, Dr. Philip G. Laver, F.S.A. 5141.25
- A number of Paving Bricks; portion of Loom Weight; Bone Knife-handle and piece of Worked Bone. Donor Dr. Philip G. Laver, F.S.A. 5145-8.25
- Burial Group, consisting of large Olla of thin coarse brown ware with dark exterior, bead rim with *cavetto* moulding below and row of small depressions at edge; height 12½ins., bulge 11ins., base 4½ins. Small Olla of grey ware, "Samian" Bowl 31 with potter's stamp, CRESIM; height 2½ins., mouth 7½ins. About 50 to 80 A.D. Donor, Dr. Philip G. Laver, F.S.A. 5150.25
- Portion of "Samian" Ink Pot (Oswald & Pryce. type 6, plate lxx.). Donor, Master G. W. Farmer. 5151.25
- Base of Pedestalled Vase of thin buff ware with tooled girth grooves. Base fragment of "Samian" platter 18 with *graffito*. Donor, Dr. Philip G. Laver, F.S.A. 5152.25, 5154.25
- Portion of Millstone of Andernach lava. Fragments of plain and decorated "Samian" and Lustre Wares, 1st century A.D. Donor, Captain H. E. Laver. 5160.25
- Fragment of "Samian" Bowl 37 with medallion decoration. Donors, Messrs. Everett & Son. 5161.25
- Portion of "Samian" Cup 27 with potter's stamp, TINTIRIM. Portion of smaller ditto with part of potter's stamp. Portion of "Samian" Cup with rouletted decoration. Two fragments of "Samian" Ink Pots (Oswald & Pryce, types 3 or 4 and variety of 7, plate lxx.). Portion of ribbed mouth of a large Flagon or Lagena of pinkish-buff ware. Portion of vase of grey ware with impressed pattern round neck. Donor, Dr. Philip G. Laver, F.S.A. 5162.25
- Base of Mortar of coarse red ware with quartz grit. Base fragment of Belgic red ware, and fragments of other wares. Donors, Masters G. Mumford and L. Johnson. 5170.26
- A number of fragments of Roman wares found on site of new building at corner of Culver and Long Wyre Streets, 1925. Donors, Colchester and East Essex Co-operative and Industrial Society, Ltd. 5172.26

Portion of bulbous Beaker of hard red ware with darker colour coating and traces of scroll decoration in light slip. 3rd century A.D. Donor, Dr. Philip G. Laver, F.S.A. 5190.26

Small Flask of "Samian" ware with flattened dome mouth-piece with tooled groove near edge, slightly grooved handle and finely moulded foot-ring, two well-turned girth grooves on shoulder. Height $5\frac{1}{2}$ ins. Found at Heybridge about 50 years ago. Donor, Mr. Lewis Belsham. (Plate V., fig. 1.) 5193.26

For a similar example see May, *York Pottery*, plate v., fig. 1; and Oswald & Pryce, *Terra Sigillata*, plate lxxxiii., fig. 2.

Globular Flask or Vase with slight neck and sharply out-curved brim, a narrow cordon at junction of neck with body; the exterior is covered with a buff slip and has been polished with the exception of a narrow matt zone round bulge; flat, slightly-beaded base. Height $5\frac{3}{4}$ ins., mouth $2\frac{3}{8}$ ins., bulge $5\frac{1}{4}$ ins., base $2\frac{1}{2}$ ins. Found with above at Heybridge about 50 years ago. Donor, Mr. Lewis Belsham. (Plate V., fig. 2.) 5194.26

Mr. Belsham informs me that these vessels were found quite near an amphora containing burnt bones, given to the Museum by his father.

Flagon of mica coated buff ware, handle and mouth wanting, hollow moulded shoulder and slightly concave beaded base. Present height $8\frac{3}{8}$ ins. bulge, 6in. base $2\frac{3}{8}$ ins. 1st century A.D. Donor, Dr. Philip G. Laver, F.S.A. 5198.26

Burial Group consisting of a fine globular Glass Bowl with wide recurved rim containing calcined bones; height $7\frac{1}{2}$ ins., bulge $8\frac{1}{2}$ ins., mouth $5\frac{3}{8}$ ins. Small Porringer of brown ware with black exterior with narrow groove below brim and concave base; height $1\frac{3}{8}$ ins., mouth $4\frac{3}{8}$ ins., base $2\frac{1}{2}$ ins. Portion of Beaker of brown ware with dark exterior, oval depressions in sides and double girth groove round bulge. Deep Mortar of Purbeck marble with sloping sides and four lateral projections, a large hole worn in base; height $6\frac{1}{4}$ in., mouth $14\frac{3}{8}$ ins. Shallow Mortar of fine sandstone with straight upright sides and four lateral projections one of which is grooved for a spout; height $5\frac{1}{8}$ ins., mouth $13\frac{1}{4}$ ins. Found on the Abbey Field, 1925. Donor, H.M. Secretary of State for War. (Plate VI.) 5211.26



T. C. Gall, photo.

For Shallow Mortar cf. Novæsium, Bonner Jahrbücker, Heft 111/112, Taf. xxxv., fig. 37, page 417. The Glass Bowl with bones was found standing in the shallow mortar, the deep mortar being inverted over it, the small Porringer was placed over the hole in the mortar and the remains of the Beaker were found outside this novel tomb. The date of the burial is probably between 80-120 A.D.

Rim fragment of fine white ware with incised girth grooves, probably belonging to an Amphora or large Lagena. An unusual type. Found on the Potter's Field, Lexden. 1st century A.D. Donor, Master G. W. Farmer. 5215.26

Mosaic Floor, from the room of a Roman house, of geometrical design in black, red, yellow and white tesserae, with border of large red tesserae. The design consists of a circular medallion of four heart-shaped buds within an octagonal panel surrounded by rectangular and lozenge-shaped panels with *guilloche*, *peltae* and floral ornaments. About 15ft. by 15ft. Originally discovered in 1906 in the garden of donor's premises, 18 North Hill. Donor, Mr. Harrington Lazell. 5217.26

A number of fragments of painted Wall Plaster, Pottery and Glass, remains of a Bone Comb repaired with bronze plates and rivets, a Bodkin, Needle and Stylus of bronze, etc. All found on site of pavement. Donor, Mr. Harrington Lazell. 5218.26

Scapula of Bos. From river Colne. Donor, Master G. Mumford. 5219.26

Antler of Red Deer and Upper Tines of another. Found in River Colne. Donor, Dr. Philip Laver, F.S.A. 5069.25, 5085.25

A number of fragments of various Wares, including "Samian" with potters' stamps, *ROP.VSFE*, *SABINVS*, *VESPONI*, *IOENALIS*, *BITVRIX.F*, *VITALIS*, *OFGERM*; fragments with *graffiti* and of decorated bowls. Donor, Dr. Philip G. Laver, F.S.A. 5120.26

Portion of buff ware Mortar with traces of colour coating. 2nd century A.D. Donor, Master G. Mumford. 5234.26

MEDIEVAL AND LATER.

Small narrow-bladed iron knife in bone handle. Probably an early oyster knife. Date uncertain. Donor, Mr. A. W. Frost. 5023.25

Turned boxwood Nutcracker, early 19th century. Triangular wooden Mousetrap, ditto. Donor, Dr. Philip G. Laver, F.S.A. 5025-26.25

- Portion of oak Tenon and fragment of early Wallpaper, from donor's premises in High Street. Donor, Mr. D. W. Jeffery. 5029-30.25
- Carved bone Ring, found in donor's garden. Date uncertain. Donor, Mrs. Nunn. 5031.25
- Two Special Constables' Staves with royal crown above, W.R. B.P. and V.R. G.P., being St. Botolph's and St. Giles' parishes respectively. Donor, Mr. Israel Saunders. 5036-7.25
- Hour Glass, formerly used in Feering Church. Early 19th century. Donor, Mr. Israel Saunders. (Plate VII.) 5038.25
- Two panels of "Wattle and Daub" Walling with stencilled decoration, from donor's premises at 37 High Street. Donors, the International Tea Company Stores, Ltd. 5047.25
- Pocket Pistol for percussion caps. Early 19th century. Donor, Mr. Walter Hoy. 5053.25
- Money Changer's Weight, stamped on one side with crown and dagger. Donor, Mr. James Ager. 5055.25
- Iron Fetter or Padlock found at Wickham Bishops. 17th century. Donor, Mr. Offord. 5056.25
- Iron Snuffers with Japanned tray. Early 18th century. Purchased. 5057.25
- Four early knives and one Razor found in street excavations, one with crescent mark on blade and horse-hoof terminal to handle, probably 16th century. Donor, Mr. Councillor A. M. Jarmin, F.R.Hist.S. 5060.25
- Two early Pill Boards. Donor, Miss G. Frost. 5068.25
- Circular Tinder Box with flint and steel. Donor, Mr. T. L. Daniell. 5070.25
To be placed in the Daniell Collection.
- Leaden Pump Head dated 1801. Purchased. 5074.25
- Wooden Deed Box covered with stamped leather and lined with copy of *The London Packet* for June 12 to 15, 1789 with stencilled pattern in violet ink. 12½ins. by 9ins. by 3¼ins. Donor, Mrs. F. G. Hilton Price. 5075.25
- Circular Theatre Ticket or Pass in silver. *Obv.*, the royal arms with supporters, between the words Theatre Royal; *Rev.*, engraved in two lines, Colchester | T. Abell, Esq. Diameter 1½ins. Purchased. 5079.25

PLATE VII.



T. C. Gall, photo.

No. 5038.25. Page 16.

Circular Theatre Ticket or Pass in pewter or white metal.
Obv., as above; *Rev.*, engraved in two lines, Colchester
 Pit. Diameter $1\frac{1}{2}$ ins. Purchased. 5080.25

Large barrel-shaped Pot with single ribbed handle, glazed
 inside; height 9 ins., mouth $7\frac{1}{2}$ ins.; 17th or 18th century.
 Small bulbous Jug of coarse red ware with single ribbed
 handle, upper portion and handle glazed; height $6\frac{7}{8}$ ins.;
 16th or 17th century. Donor, Dr. Philip G. Laver,
 F.S.A. (Plate VIII., figs. 2 and 4.) 5081-2.25

Six iron Keys with oval and reniform bows, 17th and 18th
 centuries. Donor, Mr. Thomas Elliston. 5086.25

Bronze Buckle, probably 15th century. Donor, Mr. Coun-
 cillor A. M. Jarmin, F.R.Hist.S. 5090.25

Two iron Canon Balls, found in the river Colne, New Quay,
 the Hythe, 1925. Donor, Dr. Philip G. Laver, F.S.A.
 5091-2.25

Hand Fire Engine, formerly kept in Castle Hedingham.
 Early 19th century. Purchased. 5099.25

This Engine was kept on a farm and when a fire occurred in the
 village, poles were slipped through side irons and it was lifted into
 a waggon and driven to the scene of the fire.

Rectangular brass Plate engraved with a mailed arm on a torse
 grasping a palm branch; above, a scroll inscribed **NIL
 SINE DEO**. On the back ten projecting rivets, by
 which it was attached, probably to a chest. Donor, Dr.
 Philip G. Laver, F.S.A. 5103.25

Rectangular Dish of coarse red ware with pinched in corners
 and base of broad flat handle at one side, handle and
 about a third of length wanting, glazed inside. Probably
 15th or 16th century (plate VIII., fig. 3). Portion of rim
 and handle of a large Gotch of dark grey ware, the handle
 has a number of deep incisions arranged chevronwise.
 Probably 15th century. Large iron ladle much corroded
 by rust. Donor, Dr. Philip G. Laver, F.S.A. 5107-9.25

Cast of small circular seal of the De Veres. Per Mr. R. C.
 Fowler, O.B.E., F.S.A. 5110.25

Iron Fetter-lock or Hand-cuff found in donor's garden. About
 17th century. Donor, Major L. de H. Larpent, O.B.E.
 5112.25

Human Skeleton found in Crouch Street. Probably siege
 period. Donor, Dr. Philip Laver, F.S.A. 5149.25

Tubular Vesta Box of cardboard covered with tartan paper with label on lid "Palmer's Wax Vestas, Bow, London."
Donor, Captain H. E. Laver. 5113.25

These boxes of Vestas were made for the Australian trade and this box was purchased by donor in Australia about 1880.

Small iron Cannon Ball, found in a house in West Stockwell Street. Siege period. Donor, Mr. W. T. Rainbird. 5114.25

Two Telephones of turned mahogany with diaphragm and permanent magnets attached round which the insulated wire was coiled, made by the donor about 1877 and believed to be the first telephones made in Colchester. Donor, Mr. Charles E. Benham, J.P. 5116.25

Brass Spur with short curved neck, ends of shanks and rowel wanting. Mid 17th century. Donor, Mr. W. E. Baines. 5118.25

Base of Jug of coarse red ware pinched round foot, with traces of green and orange glaze, 14th century. Half of small Jug of red ware with pedestalled base, neck and handle wanting, 14th or 15th century. Portion of Tyg or drinking vessel of coarse red ware, two of the three handles wanting, partly covered with green glaze. 15th century. Drug pot of Lambeth Delft with decoration in blue and purple; height 3½ins., 17th century. Donor, Dr. Philip G. Laver, F.S.A. 5129-32.25

Iron Rushlight-holder in wooden stand. Donor, Miss Satchell. 5134.25

"Geared Facile" Bicycle, by Ellis & Co., Ltd., 47 Farringdon Road, London, with catalogues and invoice of same, 1889. Donor, Mr. Walter Fox. 5135.25

Embroidered Silk Kerchief, which had been in donor's family for some generations. Probably 17th century. Donor, Miss J. R. Sprague. 5136.25

Two circular mahogany Plaques painted in gold and colour, an engine within a garter, inscribed "Eastern Counties Railway." Diameter 5¼ins. Purchased. 5139.25

These Plaques were painted about 90 years ago by a local coach painter named Frost, a forerunner of old Dan Jennings, coach builder, on the opening of the railway.

PLATE III.



T. C. Gall, photo.

Nos. 5120-22, 24-26.25. Pages 9, 10.

PLATE VIII.



T. C. Gall, photo.

Nos. 5081, 5082, 5107.25; 5183.26. Pages 17, 19

Portion of old Cord Needlework on the original silk, said to have been worked by Queen Anne and her ladies, 1702-14. Donor, Mrs. A. M. Bradhurst. 5143.25

A set of chairs at Berechurch Hall, Colchester, was covered with this work in the time of Sir G. Henry Smyth, Bart. Other portions of the work are at Spains Hall, Finchingfield, and similar cord work is to be seen at Hampton Court Palace.

Percussion-cap Duck Gun for punt, said to be the first of the type used at Wivenhoe. Donor, Mr. J. H. Everitt. 5144.25

The Gun belonged to a man named Barr, who died in 1924, at the age of 88 years.

Glass Seal with coat of arms, from an early wine bottle. Probably 18th century. Donor, Master G. W. Farmer. 5155.25

Early pin-fire Rifle, Service Revolver (obsolete type), Blunderbus and Crossbow. Donor, Mrs. J. J. Meyrick. 5156-9.25

Iron cog-wheel Bolt with brass-mounted handle, said to be from a door at Beeleigh Abbey. Probably 18th century. Donor, Mr. H. Baker. 5164.25

It was found on a piece of oak stile on a workman's fire.

Two pieces of Human Skin taken from under the iron work on a door of Copford Church. Donor, Mr. A. F. Nicholson. 5171.26

Thimble made from a tooth of the Sperm Whale. Date uncertain. Donor, Mrs. Ford. 5179.26

Base of a large dark green Glass Vessel, with imperfection in blowing. Found at Gidea Park, Romford. Date uncertain. Donor, Mr. H. Campkin. 5180.26

Bowl of thin hammered bronze with slightly convex base and sloping concave sides which have a shallow groove on inner edge. 14th century. Height 3ins. Mouth $7\frac{3}{4}$ ins. Donor, Dr. Philip G. Laver, F.S.A. (Plate VIII., fig. 1.) 5183.26

Small iron Hake or Pot Crane. 18th century. Donor, Mr. W. F. Vinter. 5186.26

Piece of Septaria, with Roman and later mortar adhering, from well lining on site of Co-operative Society's premises at corner of Culver Street, 1926. Donors, the Colchester and East Essex Co-operative and Industrial Society, Ltd. 5188.26

Small Glass Jug of antique form, slightly imperfect, cracked and rivetted. About 1780-1800. Donor, Mrs. Walter Grimston. 5191.26

Example of Cross-stitch Work, fine red thread on white linen. Worked by a crippled girl named Mayhew, of Writtle, about 1880. Donor, Mrs. Walter Grimston. 5192.26

Silver plated Button of the 56th Regiment, 2nd Battalion Essex Regiment. Donor, Dr. Philip G. Laver, F.S.A. 5195.26

Three cast iron Stove Panels, 11ins. by 11ins. and 11ins. by 13ins., with scripture subjects in relief: one, the Woman of Samaria at the Well; two, Christ or St. John with Chalice. About 1820-1830. Donor, Mr. John Hatfield. 5196.26

Small terra-cotta Bust of a boy with tall hat and book under arm, found in donor's garden. Height 2ins. About 1820. Donor, Mr. C. Brooks. 5200.26

Umbrella with whalebone ribs, original green silk covering and carved ivory handle, purchased in 1825; Silk Purse with cut steel rings; Brass Trivet; set of Apothecaries Scales and Weights, with two weights for sovereigns and and half-sovereigns. All early 19th century. Donors, the Executors of the late Robert Walker Dixon, of Wickham Bishops. 5275-8.26

See *Essex Review*, April, 1926, page 84, *et seq.*

Portion of neck and shoulder, with broad ribbed handle, of a large Gotch of thin tile-red ware, with decoration in buff slip and glaze on front, 15th century, and a number of fragments of medieval and later wares. Donor, Dr Philip G. Laver, F.S.A. 5213.26

Two bone Egg Spoons, formerly in use in the Wig and Fidgett inn. Length 5ins. Middle 19th century. Donor, Mrs. T. Clark. 5214.26

Large Travelling Chest of wood covered with leather, metal bands and corners, handle at each end and lock, lined with stencil-patterned paper, initials W.W. in brass tacks on lid. Length 29ins., width 17ins., depth 17ins. About middle 18th century. Donor, Mrs. Walter Grimston. 5216.26

Mahogany Book Rest, formerly belonging to Miss Savage, the Post Office, Head Street, at that time situated at No. 40. Donor, Mrs. G. Rickword. 5226.26

Two antique Cartridge Fillers and Bullet Mould. Donor,
Mr. W. O. Rippier. 5227.26

Large Bowl or Jar of hard grey ware with flat everted rim
and convex base: height $8\frac{7}{8}$ ins., bulge $10\frac{7}{8}$ ins.; 14th
century. Posset Cup of Staffordshire ware with brown
decoration and yellow glaze, loop handle; height 3ins.,
mouth $4\frac{3}{4}$ ins.; 17th century. Donor, Dr. Philip G.
Laver, F.S.A. 5222-23.26

Iron Pike Head, found when widening Ipswich Road. Length
 $10\frac{7}{8}$ ins. Probably siege period, time Charles I. Pur-
chased. 5231.26

Brass or Latten Spoon with Tudor rose stamp in bowl.
Middle 16th century. Donor, Dr. Philip G. Laver,
F.S.A. 5232.26

COINS, MEDALS, ETC.

Colchester Bay Token, 1794. Donor, Mr. F. J. Collinge.
5027.25

Large Bronze Victoria Jubilee Medal in case. Donor, Mr.
Edward B. Hiles. 5028.25

"Third Brass" of Constantine, found in donor's garden.
Donor, Mr. A. W. Frost. 5042.25

Silver Denarius of Trajan. *Rev.* COSVPPSPQR OPTIMO-
PRINCIPI. Victory standing holding wreath. Found
at Witham. Donor, Mr. W. P. Perkins. 5044.25

"First Brass" of Verus with curious brown patination.
Donor, Mr. Fisher. 5052.25

"Second Brass" of Vespasian, much worn. Found at Riven-
hall. Donor, Mr. James Agar. 5054.25

Twenty-six "Small Brass" and "Minimi," of late Roman
date. Donor, Mr. A. E. Purkiss. 5059.25

Silver Penny of Edward III., York Mint. Purchased.
5076.25

Groat of Henry VIII., Third Coinage. *Obv.* Full-faced bust
in royal mantle with fur collar. Penny of Henry VIII.,
Third Coinage. *Obv.* Mantled bust. ROSA SINE
SPINIS. Donor, Mr. F. Charrington. 5097-8.25

- "Third Brass" of Gallienus. *Rev.* a Stag, IOVI CONS AVG. Found in donors' brickyard. Donors, Messrs. H. Everett & Son. 5104.25
- Silver Penny, Edward III., Canterbury mint; Shilling, Elizabeth; Sixpence, ditto, 1st issue; Irish Farthing, Charles I.; Shilling, William III., 1689; Shilling, George II., 1758; Threepennypiece, George III., 1752; Farthing, ditto, 1820; "Cartwheel" Penny, ditto, 1797; Half-Farthing, Victoria, 1844; Bank Token for five shillings, issued by Bank of England, 1804; Sestertius of Hadrian. Donor, Mrs. Shead. 5153.25
- Farthing of Charles II., 1675, in fine state, found on donors' premises, corner of Culver Street. Donors, the Colchester and East-Essex Co-operative and Industrial Society, Ltd. 5173.26
- Sixpence, Elizabeth, 1570; "Third Brass" of Constantine I., *Rev.* VIRTVS EXERCITVS, altar inscribed VOTXX (Goodacre 162); Silver Denarius of Titus, *Rev.* Dolphin and Anchor, TRPIX IMPAVGCOSVIII PP, struck in year 80 A.D.; Roman bronze Civic Coin of Greek colony. Donor, Mr. Thomas A. Beckett. 5174.26
- Silver Denarius of Marcus Antonius. *Obv.* Head to r. M. ANT. IMP. III. V. R. P. C. *Rev.* P. VENTI. PONT. IMP. Struck B.C. 38. Donor, Mr. Samuel S. Wire. 5201.26
- Nine "Third Brass" of Allectus, *obv.* Radiated bust to r. IMPC.ALLECTVS.AVG or P.AVG or P.F.AVG. *Rev.* A Galley, VIRTVS AVG or LAETITIA AVG. Struck at Colchester Mint. Purchased. 5203.26
- "Large Brass" of Galba. Donor, Dr. Philip G. Laver, F.S.A. 5022.25
- Norwich Token, *obv.* Shield of Arms, success to City of Norwich, *rev.* Shop Front with sign over door; Norwich Half-penny, 1792, round edge, payable at the shop of Denham & Vallop, Goldsmiths. Found in donor's garden. Donor, the Mayor, Councillor A. W. Piper. 5225.26
- Aureus of Claudius, *obv.* Laureated Bust to r. TI CLAVD CAESAR AVG PMTRPVI IMPXI. *Rev.* Triumphal Arch with figures of Emperor on horseback between two trophies. DE BRITANN. (Mattingley & Sydenham No. 9, Cohen, 17, 18.) Purchased. 5228.26

- Trade Token. John Coveney in Colchester, 1657. Donor,
Alderman A. M. Jarmin, F.R.Hist.S. 5229.26
- Eleven Roman Coins of Nero, Vespasian, Septimus Severus,
Constantius, Constans and Magnentius and Three English
silver coins of Edward IV., Henry VII. and Elizabeth.
Purchased. 5235.26

MANUSCRIPTS, PHOTOGRAPHS, LANTERN SLIDES, ETC.

- Pencil Drawing of St. Botolph's Priory, by J. Coney, 1812,
7½ins. by 6½ins., in oak frame. Purchased. 5065.25
- Seven Photographs of Antiquities in the Royal Ontario
Museum, Canada. Donor, the Director. 5066.25
- Two Photographs of Late-Celtic Bowl, etc., found at Canew-
don. Donor, Mr. W. Pollitt, F.S.A. 5067.25
- Set of eleven Postcards of excavations at Roman Villa,
Folkestone. Donor, Mr. G. J. Buscall Fox. 5077.25
- Parchment Deed relating to properties leased by John
Morley, sen., of Halstead, 1705, with printed account of
same by donor. Donor, Mr. Charles L. Stevenson.
5078.25
- Five Election Squibs or Posters, 1834 to 1862. Donor, Mrs.
Letch. 5087.25
- Five Lantern Slides of inscription at 18 North Hill; Lantern
Slide of Roman pavement found on 18 North Hill, 1925,
in situ. Donors, the Corporation Publicity Committee.
5088.25, 5176.26
- The Illustrated Times, April 26th, 1856, containing an illus-
trated account of Colchester. Purchased. 5177.26
- Photograph of Ivory figure of a gladiator found at Lexden,
now in the British Museum. Donor, Dr. Philip G.
Laver, F.S.A. 5184.26
- Miners' Right, a parchment license issued to Humphry Smith
by the Colony of Victoria, 2nd July, 1860. Donor,
Alderman W. Gurney Benham, J.P., F.S.A., F.R.Hist.S.
5187.26
- Humphry Smith was a member of an Essex Quaker family in the
neighbourhood of Braintree.
- The Star, August 23rd, 1813. Contains an advertisement of
the sale of the Priory, Colchester. Purchased. 5197.26

Receipt for Cattle Plague Tax, 1866. This rate was made in Lincolnshire. Donor, Mr. V. B. Crowther-Beynon, F.S.A. 5199.26

A Survey of the Estates of Thomas Western, Esq., in the parishes of Aldham, Copford, Lexden, The Teys, etc. The plans are drawn and coloured on parchment sheets $22\frac{1}{2}$ ins. by $17\frac{3}{4}$ ins., with coat of arms on title page. Donors, Messrs. Western & Sons. 5202.26

Card Index of Essex Bronze Implements, consisting of 262 cards 10ins. by 7ins., with line drawings and specifications of the Bronze Implements of Essex as made for the British Association Records, in two cloth covered boxes. Donor, Dr. Philip G. Laver, F.S.A. 5204.26

M.S. Account Book of Robert Morris and William Peppercorn, appointed Surveyors of the Highways, 11th October, 1791. For the Parish of Wickham Bishops. Donors, the Executors of the late Robert Walker Dixon of Wickham Bishops. 5209.26

A number of MSS., Papers, Pamphlets of the late J. A. Tabor, consisting of Verses, Political Address, 1850; Reports, Colchester Lancasterian School, 1838, etc. Donor, Alderman E. A. Blaxill, J.P. 5210.26

Engraved Copper-plate Bill Head of John Smith, The George Commercial Inn, Colchester, with St. George and the Dragon at the head, and a man driving a Tilbury at foot. Donor, Mr. W. T. Smith. 5212.26

Trade Card of crimson gelatine, printed in gold, of J. C. Graves, 30 and 31 High Street, Colchester, announcing show of millinery, shawls, etc., for the season, April, 1854. $4\frac{5}{8}$ ins. by $2\frac{1}{2}$ ins. Donor, Mr. Samuel S. Wire. 5221.26

DEPOSITED.

"Third Brass" of Valentinianus. *Obv.* filleted bust to r. D N VALENTINIANVS . P . F . AVG. *Rev.* Victory marching to l. SECVRITAS REIPUBLICAE. *Ex.* P . CON (see Goodacre, No. 6). 5115.25

"Third Brass" of Magnentius. *Rev.* Christian monogram (Chi Rho), in circle. 5133.25

"Second Brass" of Claudius, head to l. *Rev.* S. C. Minerva with shield and javelin to r. (Mattingley & Sydenham, 66).
 "Second Brass" of Marcus Aurelius. *Rev.* TRPOT III, S. C. Mars to r. "Third Brass" of Carausius. *Rev.* a galley. Deposited by Councillor A. M. Jarmin, F.R.Hist.S. 5175.26

Bronze Terret for Reins, ornamented with red, blue and yellow enamel. Early Iron Age, about 1 to 50 A.D. Deposited by Mr. Sidney Porter. 5233.26

ADDITIONS TO MUSEUM LIBRARY.

From 1st April, 1925, to 4th May, 1926.

The Pottery of a Claudian Well at Margidunum, by Felix Oswald, D.Sc., F.G.S., F.S.A. (reprint). Donor, the Author. L.432

Proceedings of the Prehistoric Society of East Anglia, vol. IV., part 2, 1923-4. By Subscription L.433

Bulletin, Rhode Island School of Design. (Providence U.S.A.) Vol. XIII., parts 2, 3, 4; vol. XIV., part 1. Donor, the Director. L.434, 458, 477, 504

Léon Coutil. Bibliographie des Publications, 1884-1911. Donor, the Author. L.436

L'Age du Bronze en Ecosse, Par Léon Coutil. Donor, the Author L.437

L'Age du Bronze en Normandie (2 parts), Par Léon Coutil. Donor, the Author. L.438

Les Tumulus de la Région de Haguenau et Bischwiller, Par Léon Coutil. Donor, the Author. L.439

Bulletin of the Royal Ontario Museum of Archæology, University of Toronto, Canada, May, 1925, January, 1926. L.447, 493

Hull Museum Publications, Nos. 139, 140, 141. Donor, the Director. L.448, 461, 506

Urgeschichtlicher Anzeiger, No. 3. By Subscription. L.449

- Bulletin of the Russell-Cotes Art Gallery and Museum, Bournemouth, vol. IV., Nos. 2 to 4; vol. V., No. 1. Donor, Mr. R. Quick (Curator). L.451, 464, 487, 509
- National Museum of Wales. Guide to the Groups of Mammals. Donor, the Director. L.453
- The Milled Silver Coinage of England. Purchased. L.454
- British Imperial Copper and Bronze Coinage, 1838-1920, and Supplement, 1838-1925. Purchased. L.455-6.
- National Museum of Wales. The Slates of Wales, by F. J. North, D.Sc., F.G.S. Donor, the Director. L.459
- Horniman Museum Handbook, No. 14. Travel and Transport. Donor, the Clerk of the London County Council. L.462
- Essex Naturalist, vol. xxi., parts 3 and 4. Donors, the Council of the Essex Field Club. L.467, 507
- A Guide to the Roman City of Uriconium, by the late George E. Fox, Hon. M.A. (Oxon.), F.S.A., revised 1915. Donor, Dr. Philip G. Laver, F.S.A. L.468
- An Early Iron Age Spear found near Dunstable, by T. W. Bagshaw, F.G.S., F.Z.S., F.R.G.S. (reprint). Donor, the Author. L.469
- The Antiquity of Man in Ipswich, by J. Reid Moir (reprint). Donor, the Author. L.470
- Journal of Roman Studies, vol. xiv., 1924; vol. xv., part 1, 1925. By Subscription. L.471, 514
- Report on Animal Remains found in Reid's Cavern, near Burrington Combe, Somerset, by J. Wilfrid Jackson, M.Sc., F.G.S. (reprint). Donor, the Author. L.472
- An Inhabited Site of La Tène I. Date on Swallowcliff Down, by R. C. C. Clay, M.R.C.S., L.R.C.P., F.R.A.I. (reprint). Donor, Mr. J. Wilfrid Jackson, M.Sc., F.G.S. L.473
- Report on Roman Potters Marks found in Chester, by A. G. K. Hayter, M.A., F.S.A. (reprint). Donor, the Author. L.474
- Niall of the Nine Hostages in connection with the Treasure of Traprain Law, by Sir William Ridgeway, Sc.D., F.B.A. (reprint). Donor, the Author. L.475

- Romano-British Cissbury, by H. S. Toms (extract). Donor,
the Author. L.476
- The Antiquaries Journal, vol. V., 1925; vol. VI., Nos. 1 and
2. By Subscription. L. 478, 517
- Norwich Museum Centenary Souvenir, 1825-1925. Donor,
the Curator. L.479
- In Breckland Wilds, by W. G. Clarke, F.G.S. By Sub-
scription. L.480
- The Journal of the Manx Museum, vol. I., Nos. 1 to 6. By
Subscription. L.505
- Archæologia, vol. LXXIV., 1923-4. Purchased. L.482
- The County Telegraph Handbook and Directory and Colches-
ter Almanack, 1926. Donors, the Proprietors, the Essex
County Telegraph. L.483
- Problems in Anthropology, by Edward A. Martin, F.G.S.
(reprint). Donor, the Author. L.485
- The Romano-British Collection in the Royal Ontario Museum
of Archæology, Canada, by Cornelia G. Harcum (reprint).
Donor, the Author. L.486
- Colchester, by the Rev. L. Cutts, B.A. (second edition), 1889.
Donor, the Rev. William C. Hall. L.488
- Society of Antiquaries, Report No. V.: Excavation of the
Late-Celtic Urnfield at Swarling, Kent, by J. P. Bushe-
Fox, F.S.A., 1925. Donor, the Author. L.491
- Bronze Crowns and a Bronze Head-dress from a Roman site
at Cavenham Heath, Suffolk, by Nina Frances Layard,
F.S.A. (reprint). Donor, the Author. L.492
- Remains of Pagan Saxondom, by John Yonge Akerman,
London, 1855. Donor, Dr. Philip G. Laver, F.S.A.
L.495
- The Archiepiscopal Coins of York, with Appendices, by
Cæsar Caine, York, 1908. Donor, Dr. Philip G. Laver,
F.S.A. L.496
- The Tyrrhenians in Greece and Italy, by Professor Oscar
Montelius (extract). Donor, Mr. A. G. Wright, Curator.
L.497

- National Museum of Wales. Guide to the Collections of British Lepidoptera, 1925. Donor, the Director. L.499
- Morant Club Report, On Two Large Groups of Marsh Mounds on the Essex Coast, by Miller Christy, F.L.S. and W. H. Dalton, F.G.S. Donor, Mr. Miller Christy. L.501
- The² Anglo-Saxon Cemetery at Girton College, Cambridge, by E. J. Hollingworth and M. M. O'Reilly, 1925. Purchased. L.502
- Natural History. Journal of American Museum of Natural History, vol. xxv. Donors, the Council of the Museum. L.511
- The⁶ Museums Journal, vol. xxiv., 1924-5. By Subscription. L.512
- Spink's Numismatic Circular, vol. xxxiii. By Subscription. L.513
- British Museum, Guide to Early Iron Age Antiquities (second edition), 1925. Purchased. L.516
- County Borough Southend-on-Sea. Museum Handbook, No. 2. Essex Birds. Donor, Mr. W. Pollitt, F.S.A. L.518
- The Wayland-Dietrich Saga, part 1, the Story of Wayland, by Katherine M. Buck. Donor, the Author. L.520
-

List of Donors.

Agar, James (Rivenhall)
 American Museum of Natural History (New York,
 U.S.A.)
 Bagshawe, T. W. (London)
 Baines, W. E. (Lexden)
 Baker, H. (Sudbury)
 Beckett, T. A.
 Belsham, Lewis (Heybridge)
 Benham, Alderman W. G.
 Benham, C. E.
 Blaxill, Alderman E. A.
 Bond, E. T. (Braintree)
 Bradhurst, Mrs. A. M. (Rivenhall)
 Brooks, C.
 Buck, Miss K. M. (Buckhurst Hill)
 Bushe-Fox, Major J. P. (London)
 Campkin, H. (Romford)
 Chalmers, Adam (Tendring)
 Charrington, F. (Felixstowe)
 Christy, Miller (London)
 Clark, Mrs. T.
 Colchester and East-Essex Co-operative Society
 Collinge, F. J.
 Corfield, Dr. W. F.
 Coutil, M. Léon, (France)
 Crowther-Beynon, V. B. (Beckenham)
 Daniell, T. L.
 Dixon, Executors of the late R. W. (Northampton)
 Elliston, T. (Sudbury)
 Essex Field Club, Council of (Stratford)
 Everett, H., & Son
 Everitt, J. H. (Elmstead Heath)
 Farmer, G. W.
 Fisher, —
 Ford, Mrs.
 Fox, G. J. B. (London)
 Fox, Walter (Romford)
 Frost, A. W.
 Frost, Miss G.
 Grimston, Mrs. Walter (Earls Colne)
 Gurney, F. J. (Earls Colne)
 H.M. Secretary of State for War (London)
 Hale, A. S. (Sible Hedingham)
 Hall, Rev. William C. (Springfield)

Halls, H. H. (Norwich)
 Harcum, Miss Cornelia G. (Ottawa)
 Hatfield, John
 Hayter, A. G. K. (London)
 Hiles, E. B. (Tiptree)
 Hills, Alfred (Bocking)
 Hoy, Walter (Marks Tey)
 International Tea Co. Stores, Ltd. (London)
 Jackson, Captain H. F. (Creeksea)
 Jackson, J. Wilfrid (Manchester)
 Jarmin, Councillor A. M.
 Jeffery, D. W.
 Johnson, L.
 Larpent, Major L. de H. (Copford)
 Laver, Captain H. E. (Ardleigh)
 Laver, Dr. P. G.
 Layard, Miss N. F. (Nayland)
 Lazell, H.
 Leney, F. (Norwich)
 Letch, Mrs.
 London County Council, Clerk to the (London)
 Mabbitt, — (Fingringhoe)
 Marshall, Vernon E.
 Martin, E. A.
 Meyrick, Mrs. J. J. (London)
 Moir, J. Reid (Ipswich)
 Mumford, G.
 National Museum of Wales, Director of (Cardiff)
 Nicholson, A. F.
 Nunn, Mrs.
 Offord, — (Wickham Bishops)
 Oswald, Dr. F. (Nottingham)
 Perkins, W. P. (Witham)
 Piper, Councillor A. W. (Mayor)
 Pollitt, W. (Southend)
 Price, Mrs. F. G. H. (London)
 Publicity Committee, Corporation
 Purkiss, A. E.
 Quick, R. (Bournemouth)
 Rainbird, W. T.
 Rickword, Mrs. G.
 Ridgeway, Sir W. (Cambridge)
 Rippier, W. O.
 Rowe, L. Earle (Rhode Island, U.S.A.)
 Royal Ontario Museum, Director of (Ottawa)
 Rudsdale, E. J.

Satchell, Miss
 Saunders, Israel
 Shead, Mrs.
 Sheppard, T. (Hull)
 Smith, Francis (White Colne)
 Smith, W. T. (Wivenhoe)
 Sprague, Miss J. R. (Epping)
 Stevenson, C. L. (Halstead)
 Telegraph, Essex County
 Toms, H. S. (Brighton)
 Vinter, W. F.
 Western & Sons (London)
 Wire, Samuel S.
 Wright, A. G. (Curator)

Reports.

Reports from 1st April, 1925, to 4th May, 1926.

Belfast, Public Art Gallery and Museum
 Bucks, Architectural and Archæological Society
 Cambridge, Fitzwilliam Museum
 Cambridge, Friends of the Fitzwilliam Museum
 Cardiff, The National Museum of Wales
 Chester, Society of Natural Science, etc., Grosvenor Museum
 Dunstable Library and Museum
 Hove, Public Library and Museum
 Ipswich, Borough Museum
 Isle of Man, Manx Museum
 Malta, Museum Department
 Manchester, University Museum
 New York, American Museum of Natural History
 Norwich Castle Museum
 Oxford, Ashmolean Museum
 Oxford, University Museum
 Peterborough, Natural History, Scientific and Archæological
 Society's Museum
 Salisbury, South Wilts and Blackmore Museum
 Southend-on-Sea, Public Library and Museum
 Spalding, Gentlemen's Society
 Stoke-on-Trent, County Borough Museums
 Taunton County Museum
 Whitby Literary and Philosophical Society
 Wisbech, Museum
 Yorkshire Philosophical Society, Yorkshire Museum

N.B.—Curators of Museums will much oblige by forwarding their reports in exchange as issued.

Forms of Bequest.

I bequeath out of such part of my personal Estate as may by Law be bequeathed for such purposes, to the Mayor, Aldermen and Burgesses of the Borough of Colchester, the sum of

free from Legacy duty, for the Benefit of the Corporation Museum of Antiquities, to be expended in such a way as they may deem expedient; and I direct that the receipt of the Treasurer for the time being of the said Borough shall be an effectual discharge for the same Legacy.

I bequeath*

to the Mayor, Aldermen and Burgesses of the Borough of Colchester (Free from Legacy Duty, which duty, I direct shall be paid out of my pure personalty) for the benefit of the Corporation Museum of Antiquities, either for Exhibition, or for such other purpose as they may deem expedient: and I further direct that the receipt of the Town Clerk for the time being of the said Borough shall be an effectual discharge for the same Legacy.

* Antiquities or other Objects.

Publications.

The following Publications can be obtained at the Museum, or will be forwarded by post on application *Postage extra.*

ESSEX BRONZE IMPLEMENTS AND WEAPONS in the Colchester Museum. By *Charles H. Butcher*. 12 pp., 6 plates 1/-

MORANT CLUB REPORT: AN INSULA OF ROMAN COLCHESTER. By *R. E. M. Wheeler*, M.C., M.A., D.Lit. 41 pp., 2 plans, 11 illustrations ... 1/-



Picture Post Cards

Of the Castle and various Antiquities in the Museum are on Sale at the Museum, price One Penny each, or in Sets as under:—

Views of the Castle	Set of 12—10d.
Antiquities—Bronze and Iron Ages	„ 10— 9d.
„ Romano-British Period	„ 14— 1/-

